



GLOBAL ENVIRONMENT FACILITY  
INVESTING IN OUR PLANET



Artisanal and  
Small Scale  
Gold Mining

# NAP

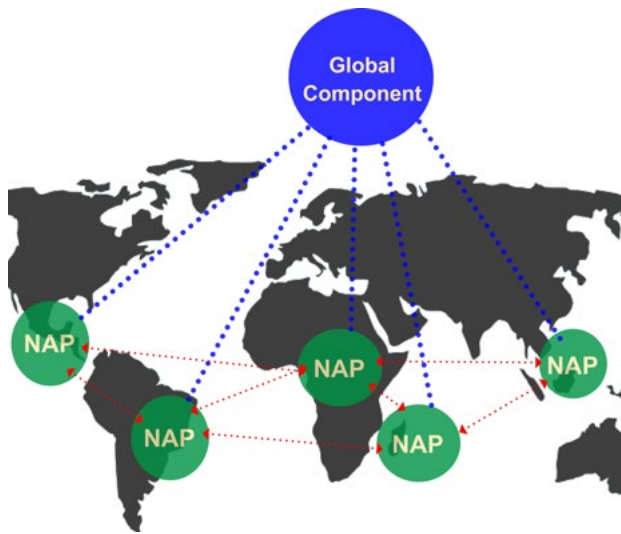
National  
Action  
Plan

## GLOBAL COMPONENT

Development of National Action Plans (NAPs) for Artisanal and Small Scale Gold Mining (ASGM) is an obligation under Article 7 of the Minamata Convention on Mercury for each country that determines that ASGM in its territory is more than insignificant.

**UN Environment Global Mercury Partnership** assists NAP projects, funded by the Global Environmental Facility and implemented by the

UN Environment, by providing **technical support, information exchange, capacity building and knowledge generation**. This is also referred to as **NAP Global Component**. In order to facilitate the development of NAPs, the Partnership is undertaking activities to ensure that all NAP projects receive support and information throughout the entire process. Specifically, the Partnership is developing tools and methodologies\* that will guide the development of strategic sections of the NAPs. Moreover, the Partnership assists with capacity building and training regarding the baseline estimates and development of the national ASGM overview. The services provided intend to ensure consistency and high quality among NAPs. In addition, as part of the Global Component, the Partnership facilitates communication between the projects and countries developing NAPs, promoting the regional cooperation and exchange of information and experience.



### CORE ACTIVITIES OF THE GLOBAL COMPONENT



Development of a roster of experts and development of tools and methodologies



Capacity building and assistance with baseline estimates



Knowledge management and information exchange through the Global Mercury Partnership website and Partners



Workshops to identify lessons learned and opportunities for future cooperation in the NAP implementation

\* the developed materials will be publicly available

## EXPERTISE

The expertise of the UN Environment Global Mercury Partnership covers all the aspects that need to be included as part of the implementation strategies in the NAP, which are based on the requirements listed in Annex C of the Minamata Convention on Mercury.

## EXAMPLES OF TOOLS and METHODOLOGIES

developed through NAP Global Component technical support to the countries developing Minamata NAP:

### [NAP guidance document](#)

adopted by the Minamata Conference of the Parties.

### [ASGM Inventory Toolkit](#)

methodology to collect and analyze the baseline

### [Mobile data collection tool](#)

to store and manage the collected data

### [MapX platform for NAPs](#)

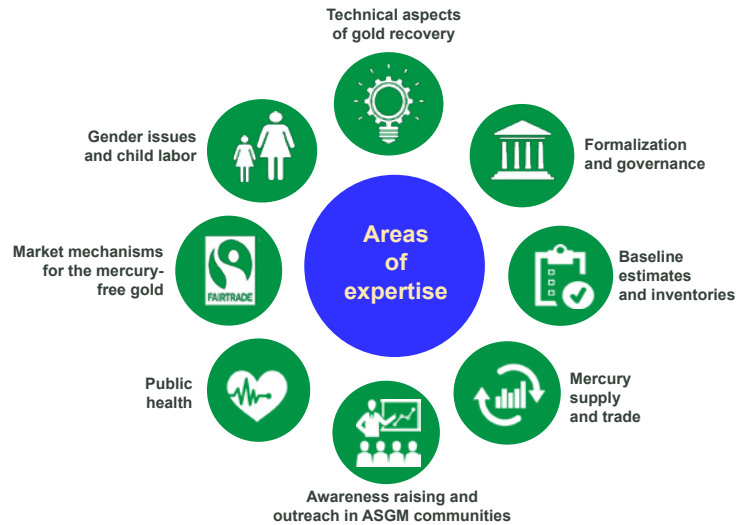
to map and monitor the collected data

### [Formalization Handbook](#)

to set formalization strategy under NAP

### [Illustrated Guide to mercury free ASGM](#)

Interactive, online guide that synthesizes and connects existing information on mercury-free practices in the ASGM sector



## OTHER SERVICES

In addition to the publicly available tools and information materials, UN Environment provides support through the entire project duration to NAPs that it implements. Services include:

Access to and recommendations on available tools and methodologies in the 8 areas of expertise

Organization of the regional workshops and capacity building

Consultations and country-specific assistance

Revisions and feedback in order to ensure high quality of the NAP project products

## CONTACT US



Kenneth Davis  
kenneth.davis@un.org



Malgorzata Stylo  
malgorzata.stylo@un.org

Visit the [website](#)  
of [UN Environment](#)  
[Global Mercury Partnership](#)