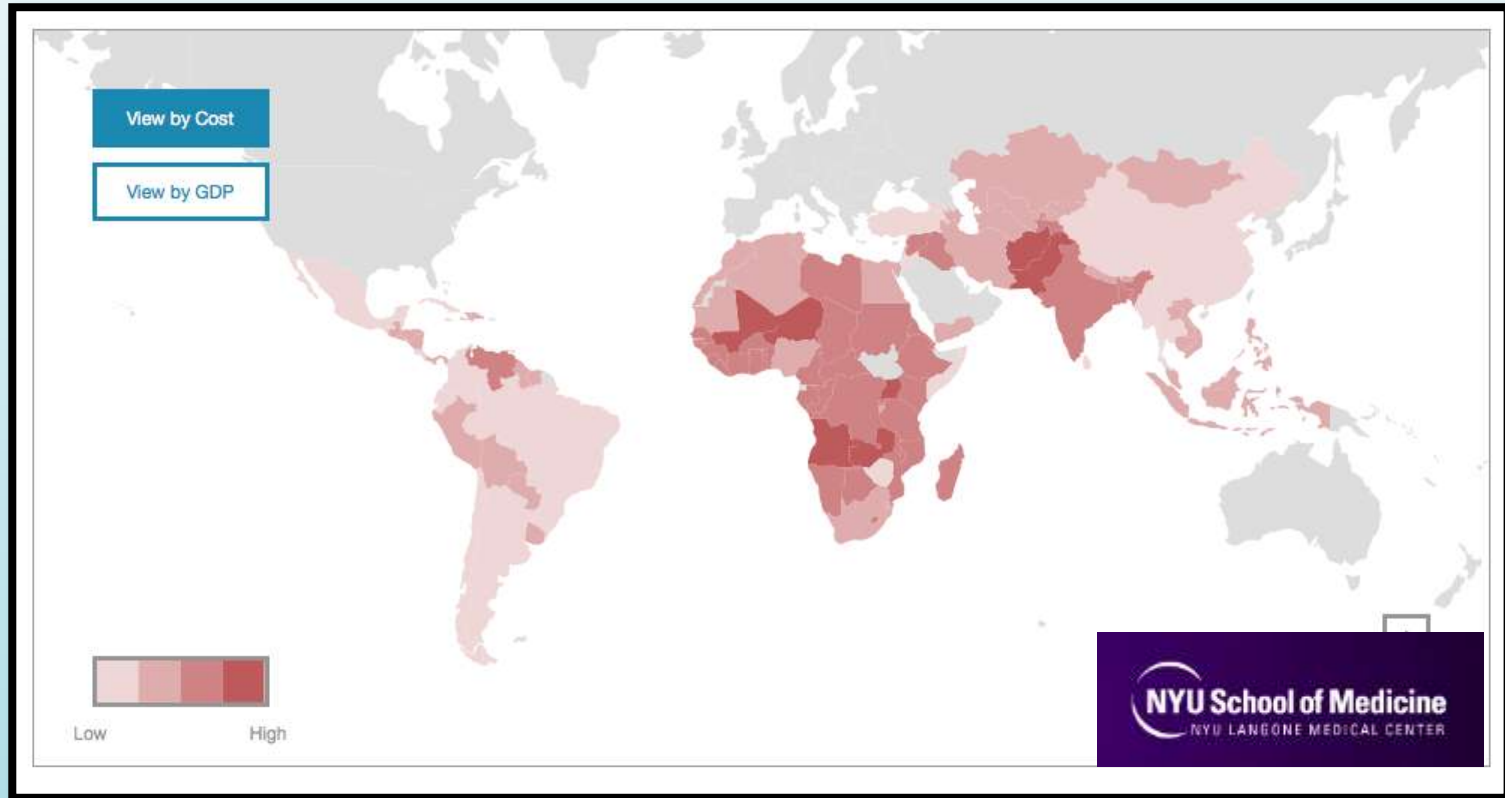


Economic Costs of Childhood Lead Exposure

New On-Line Tool



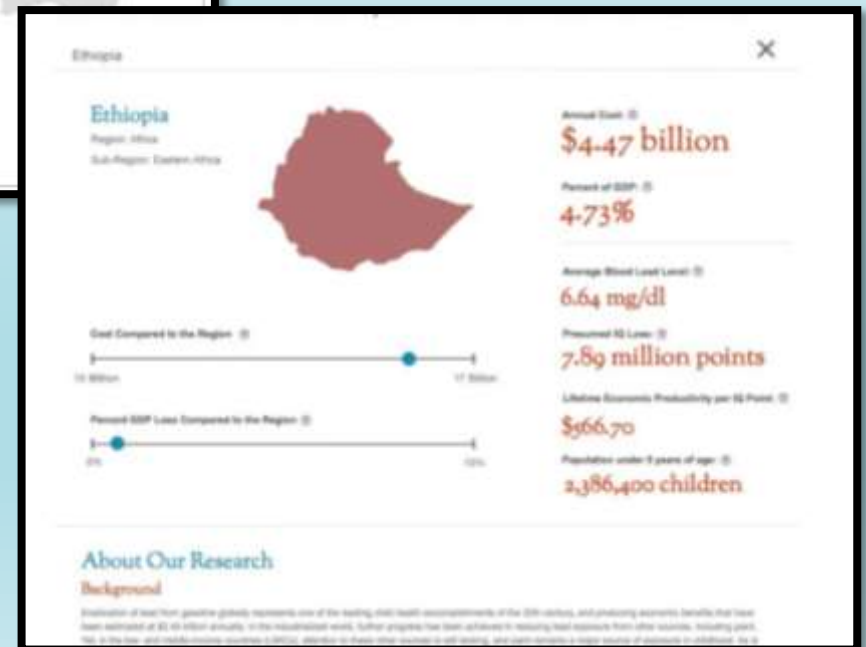
- Learn and share **cost of childhood lead poisoning in your country.**
- **Map** will display cost and percent GDP loss by country.
- Launch planned **May 2016.**
- Will **raise awareness** of economic costs of childhood lead exposure.
- Based on research from **New York University.**

How the Map Works:

Hover over country to view brief summary of information.



Click for more detailed information.



Where do the Numbers Come From?

Country	Annual Cost (\$)	% of GDP lost
Uganda	3.54 billion	7.58
Zambia	1.44 billion	6.59
Malawi	878 million	6.22
Tanzania	4.13 billion	6.06
Benin	861 million	5.81
Rwanda	789 million	5.77
Democratic Republic of Congo	990 million	5.4
Cameroon	2.52 billion	5.28
Kenya	3.75 billion	5.26
Sudan	4.93 billion	5.17
Cote d'Ivoire	1.76 billion	4.85
Ethiopia	4.47 billion	4.73
Ghana	2.15 billion	4.57
Nigeria	16.2 billion	3.94
Burundi	179 million	3.45
South Africa	17.7 billion	3.17

- The map is based on comprehensive, country-by-country modeling data.
- Data from countries in attendance at this workshop shown here.
- Full report by New York University researchers available online and by request.

Thank you!

Contact:

Angela Bandemehr

U.S. Environmental Protection
Agency

Bandemehr.angela@epa.gov