

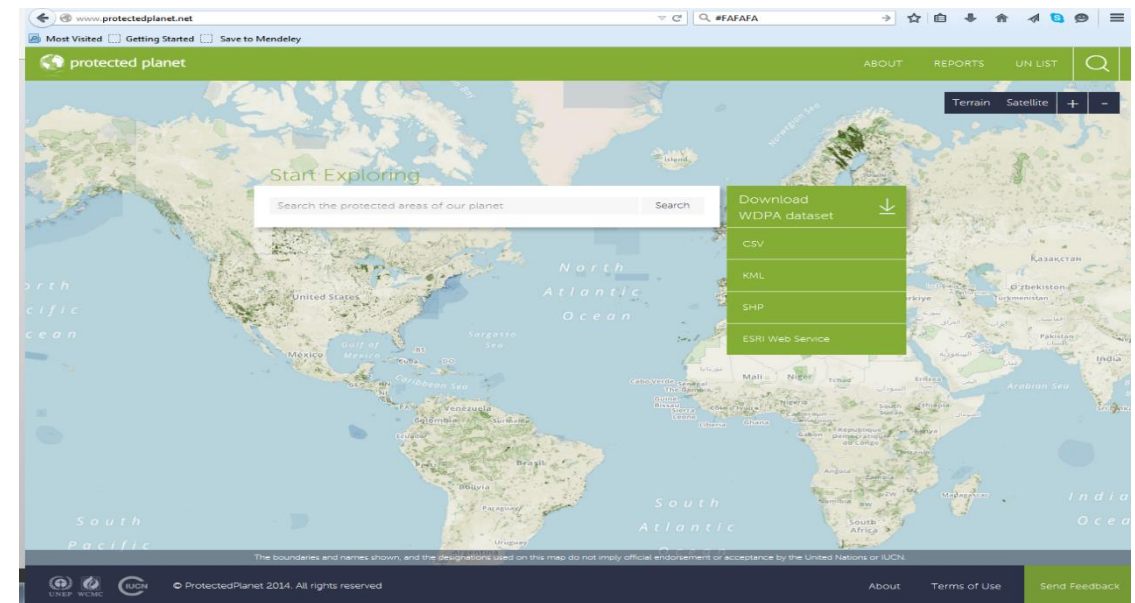
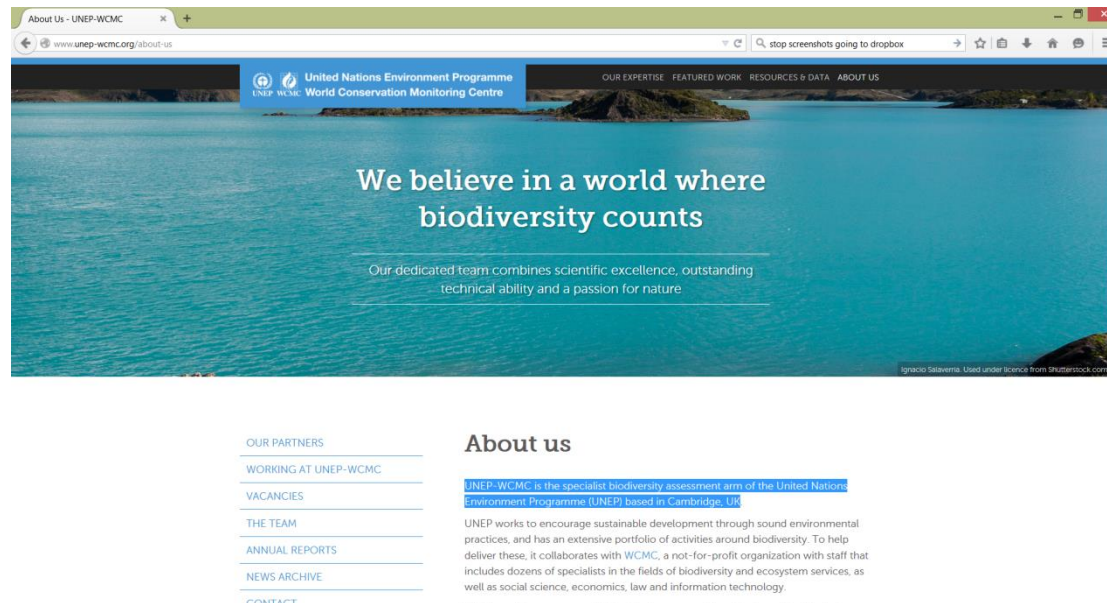
Protected Areas and Regional Seas

Brian Mac Sharry
Protected Areas Programme
UNEP-WCMC

protectedplanet.net
brian.macsharry@unep-wcmc.org

UNEP-WCMC

UNEP-WCMC is the specialist biodiversity assessment arm of the United Nations Environment Programme (UNEP) based in Cambridge, UK.



UNEP-WCMC

UNEP-WCMC is broken into several Programmes: Species, Convention and Policies, Climate Change, Business and Biodiversity, Science, Informatics, Ecosystem and Assessments, Protected Areas and Marine.

www.unwp-wcmc.org

Marine Programme

Covers all aspects of the Marine environment with a focus on:

-Marine datasets- Ocean Data Viewer

-Marine Spatial Planning

-ABNJ

-Research

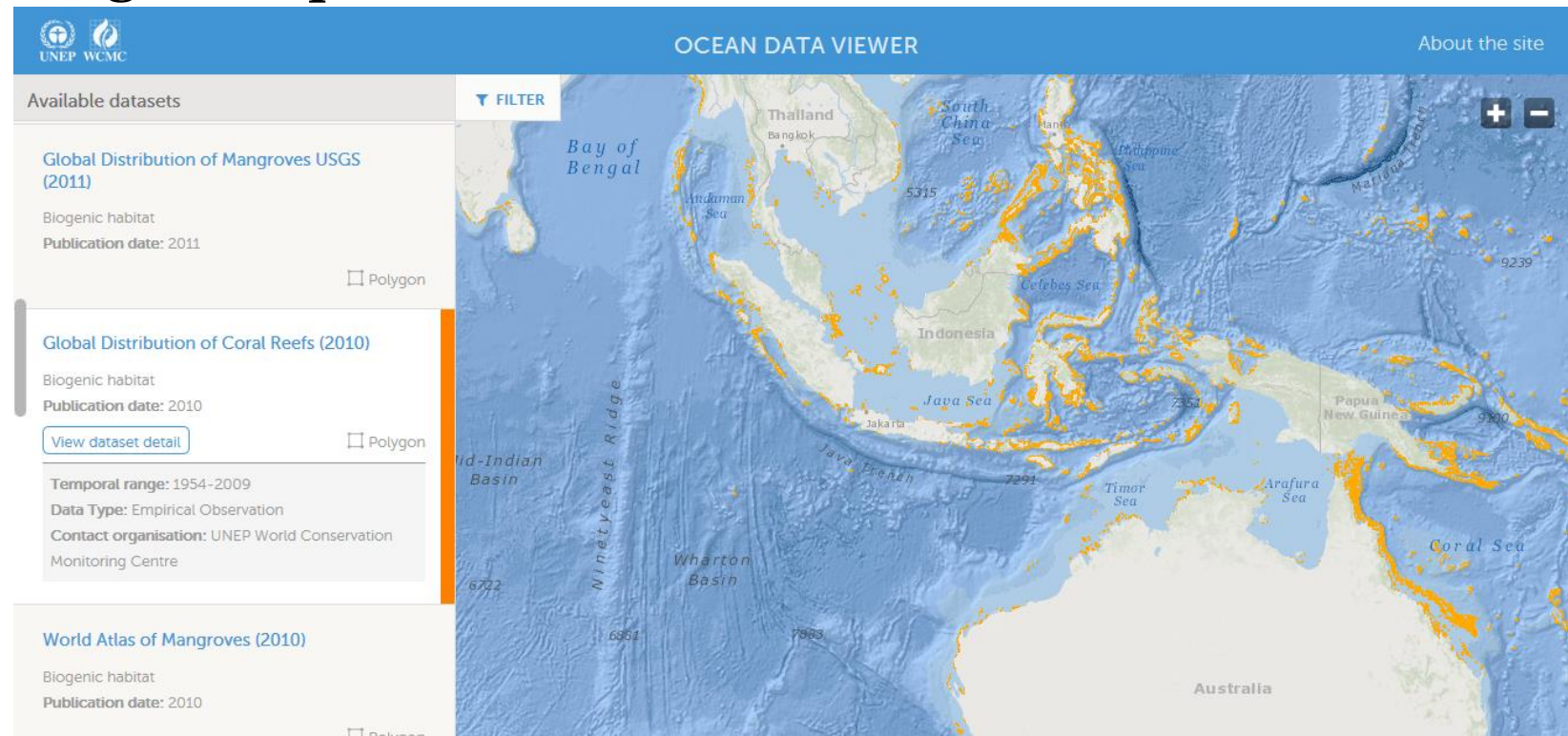
Work across the different programmes to ensure Marine issues are being addressed.

Ocean Data Viewer

30+ datasets including:
coral, mangrove, seagrass, ecoregions, species

Biodiversity metrics,
environmental variables,
seamounts, etc

Background ‘factsheets’
are available on our
‘marine’ Biodiversity A-Z



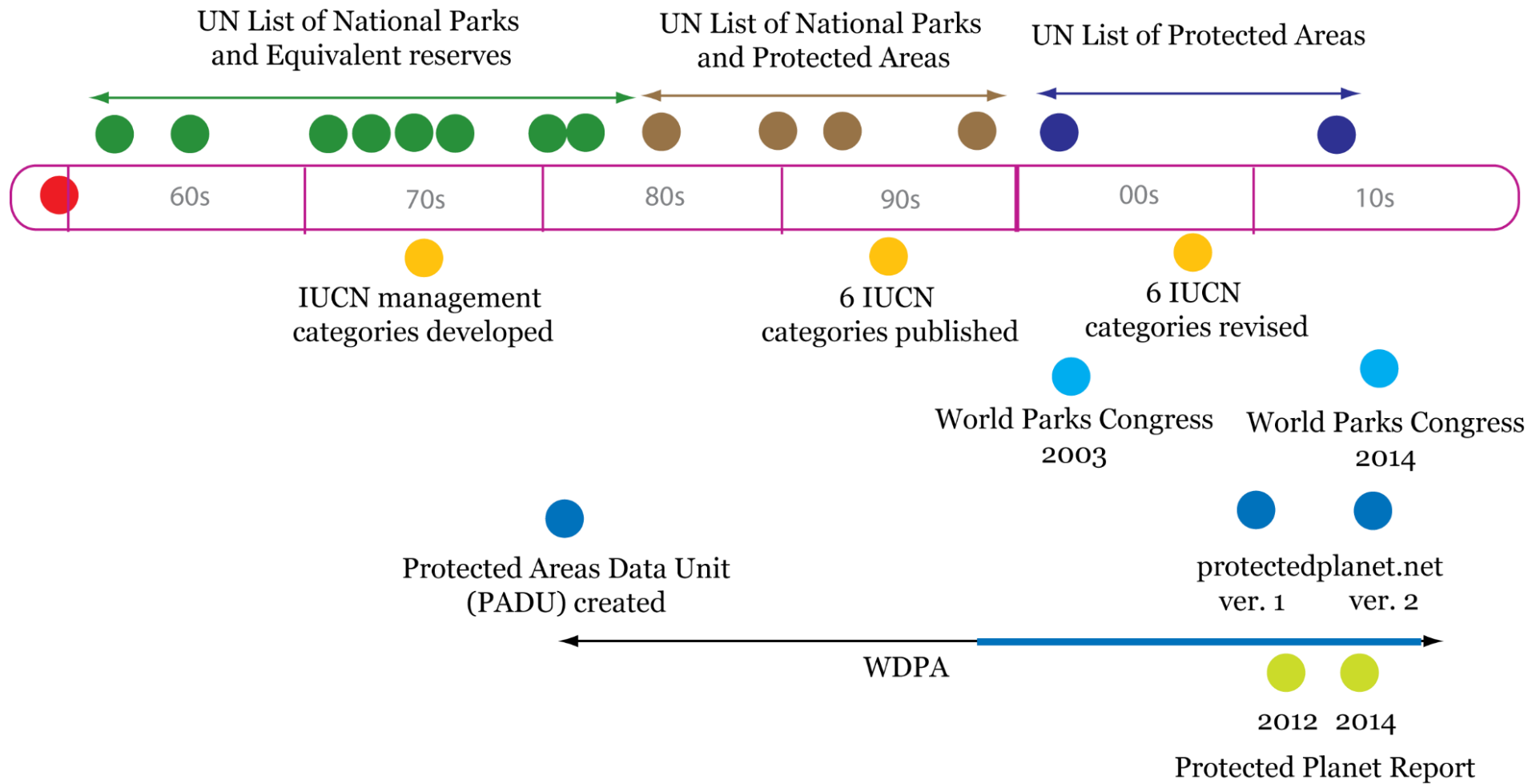
World Database on Protected Areas

World Database on Protected Areas

The only global authoritative **database** on terrestrial and marine **protected areas**.

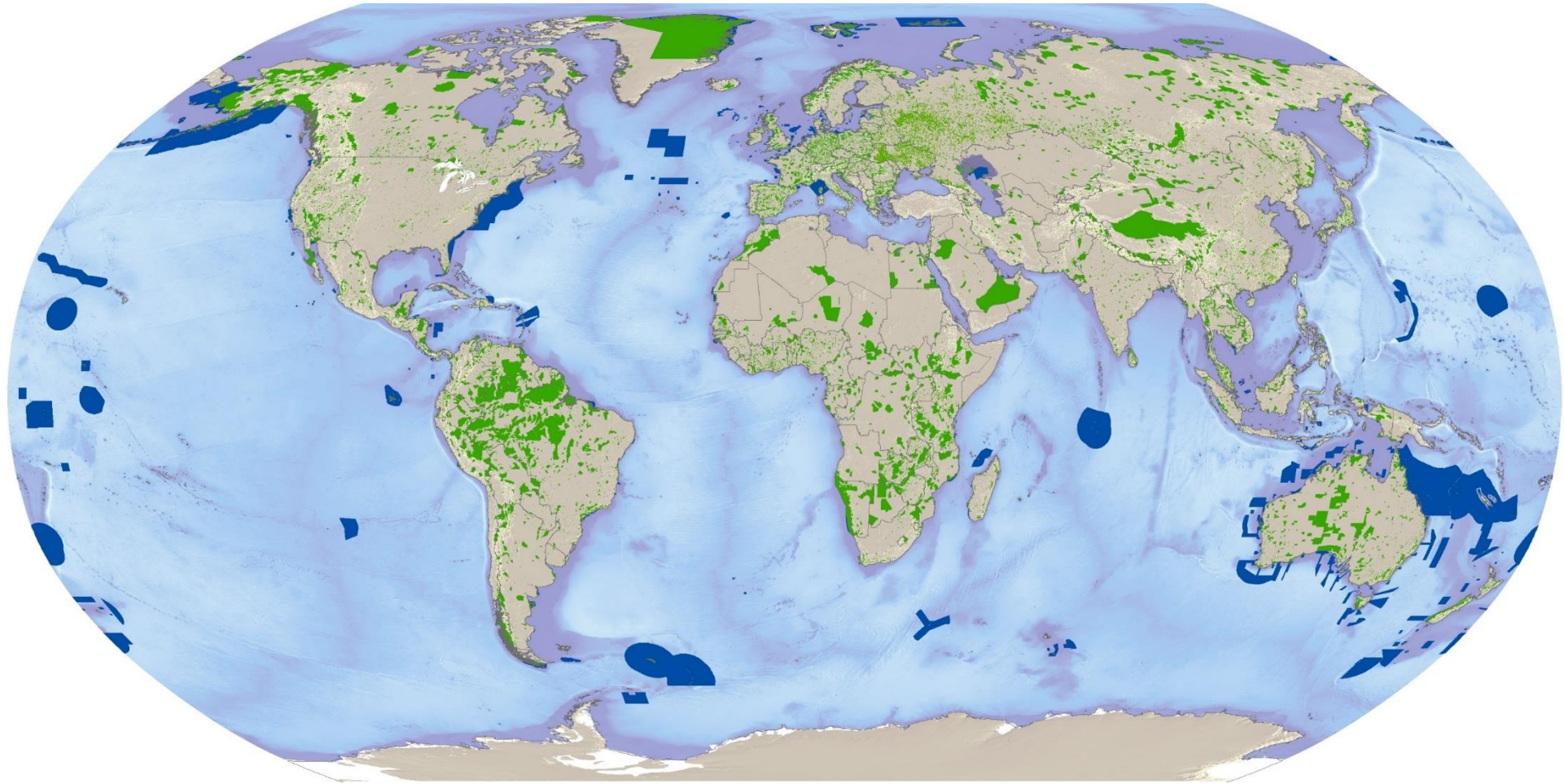
A joint initiative between the United Nations Environment Programme (**UNEP**) and the International Union for Conservation of Nature (**IUCN**).

Compiled and managed by the UNEP World Conservation Monitoring Centre (**UNEP-WCMC**) in collaboration with governments and non-governmental organizations

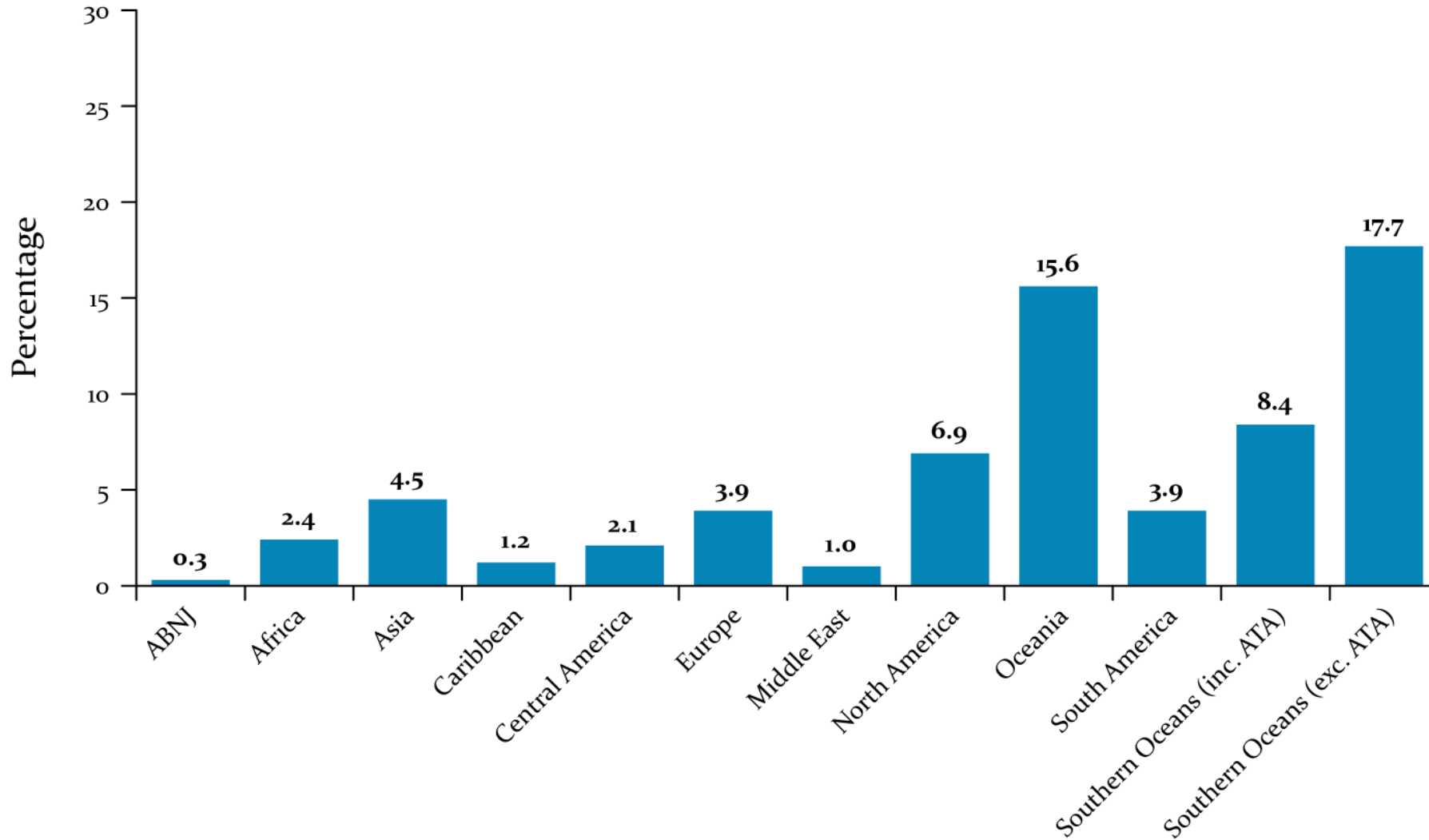


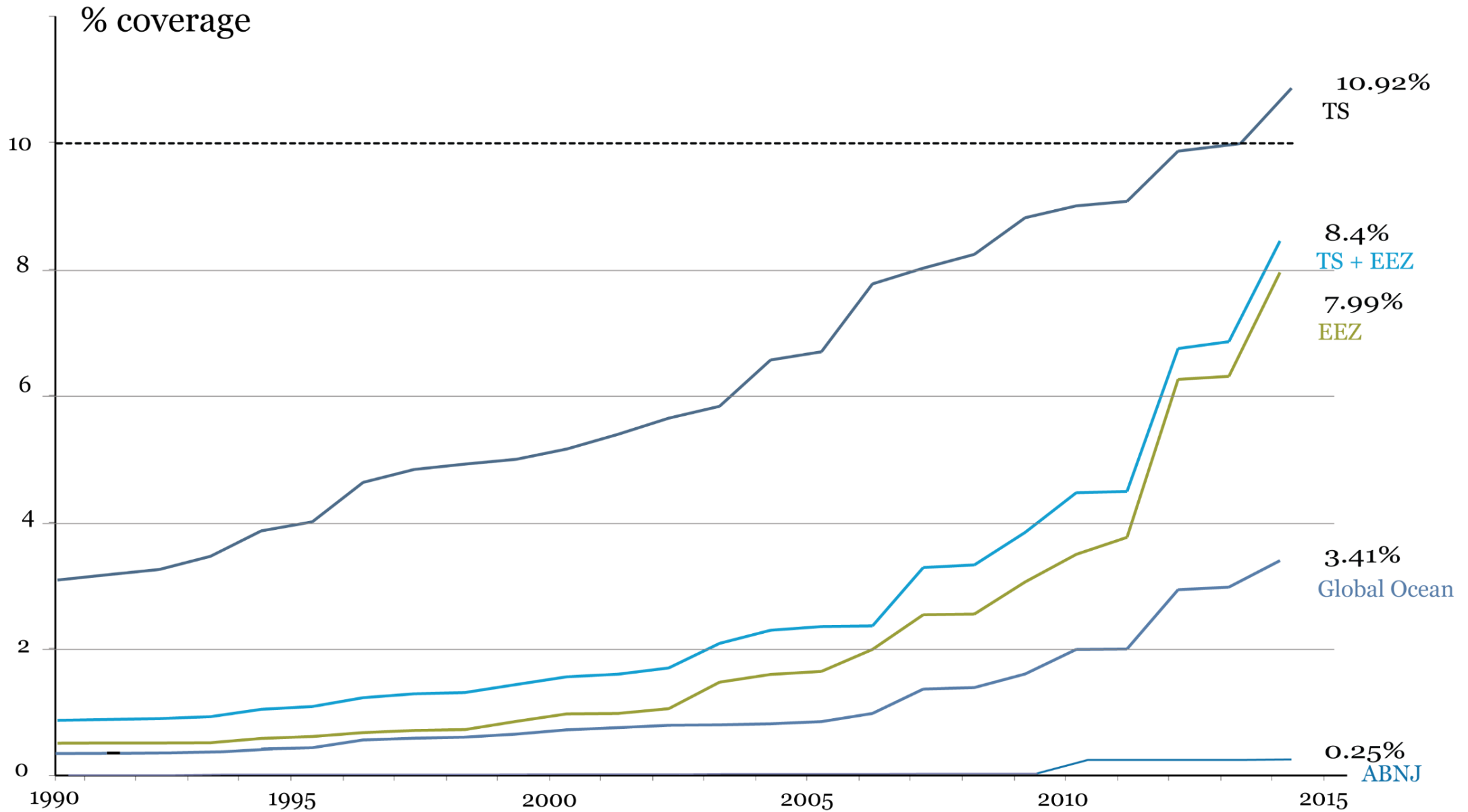
Over 217 700 records from over 240 countries and territories

Over 18 000 records have a marine component



Percentage of Marine areas covered .



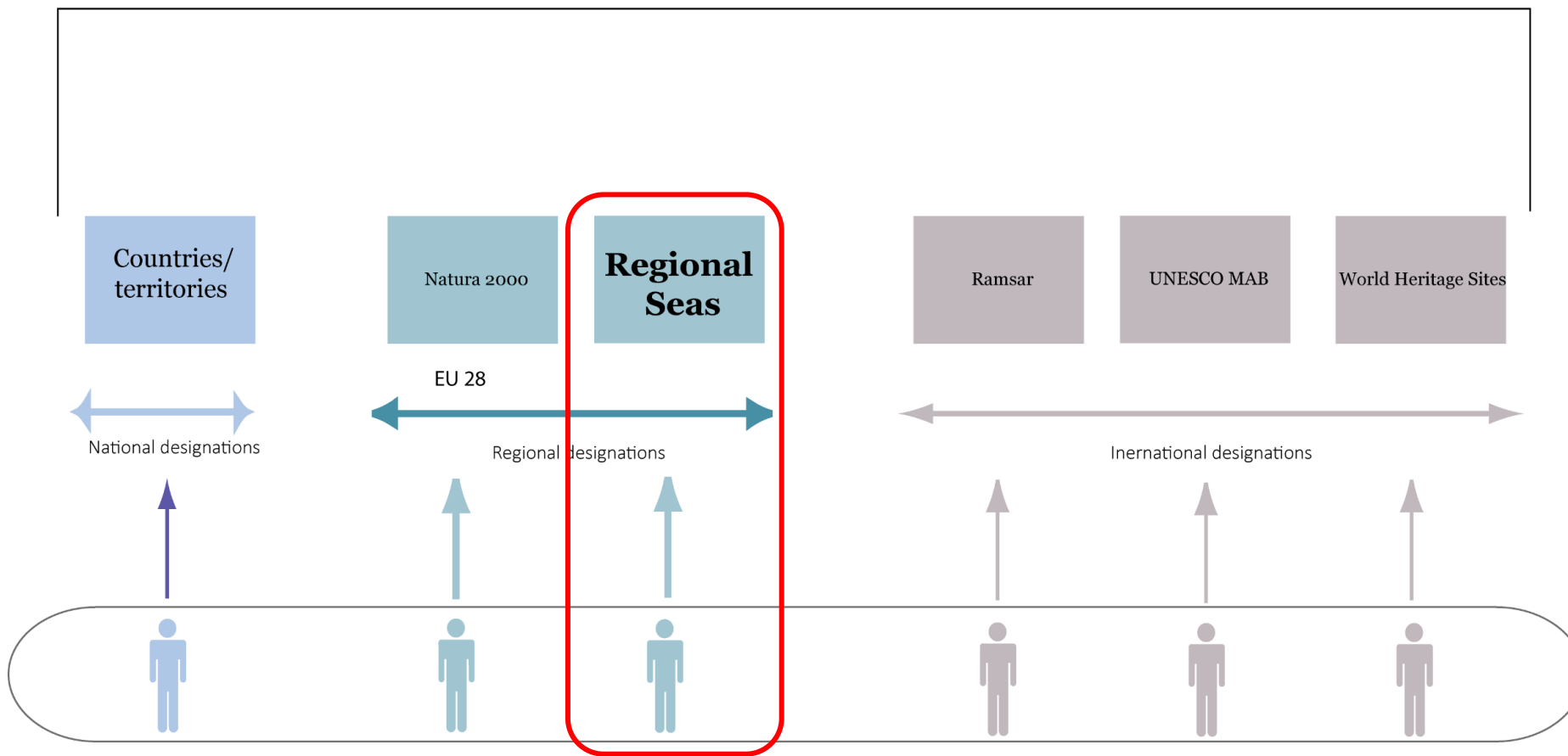


How does data get into the WDPA?

UNEP-WCMC



HELCOM: 153 records
OSPAR: 6 records
Cartagena Convention: 6 records
SPAMI: 32 records





What it is used for..

Publications & indicators

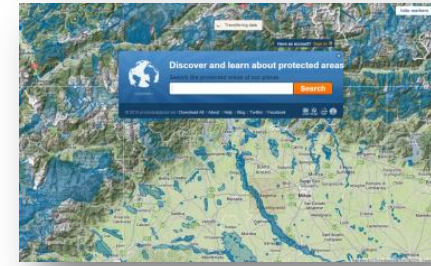
- Millennium Development Goals (Goal 7)
- CBD Aichi Targets
- Global Biodiversity Outlook
- Protected Planet Report (bi-annual)
- Global Reporting Initiative

Online systems

- DOPA
- Protected Planet
- IBAT

Multiple sectors

- Business, bank & industry users
- Scientists & researchers
- Government, NGO & communities



www.protectedplanet.net #FAFAFA

Most Visited Getting Started Save to Mendeley

protected planet ABOUT REPORTS UN LIST

Terrain Satellite + -

Start Exploring

Search the protected areas of our planet Search

- Download WDPA dataset ↓
- CSV
- KML
- SHP
- ESRI Web Service

The boundaries and names shown, and the designations used on this map do not imply official endorsement or acceptance by the United Nations or IUCN.

UNEP WCMC IUCN © ProtectedPlanet 2014. All rights reserved About Terms of Use Send Feedback



Brian MacSharry

Protected Areas Programme, UNEP-WCMC

Brian.macsharry@unep-wcmc.org

www.protectedplanet.net

