

Practical approaches to public health in ASGM communities

Myrienne Richard, MPH
Public Health and Education, AGC



**ARTISANAL
GOLD COUNCIL**

2ND ASGM GLOBAL FORUM
LIMA, SEPT 3-5, 2013

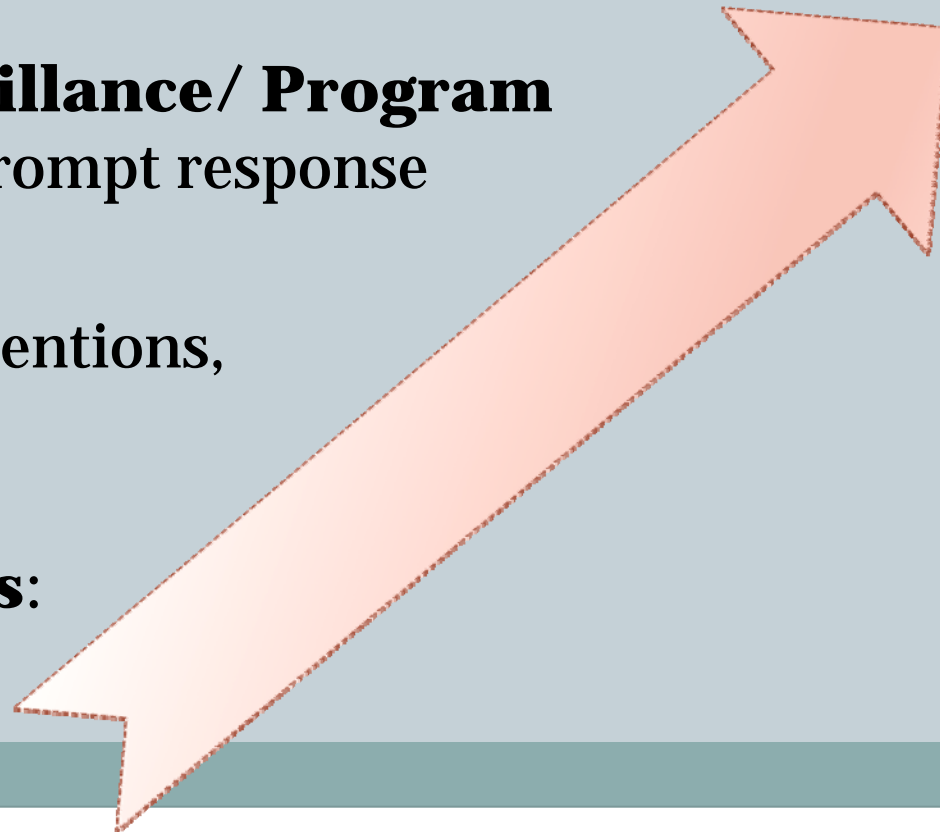
What is the role of health systems in ASGM?

Better Health

Disease Surveillance/ Program Monitoring: Prompt response

Treatment: Interventions, Policies

Research & Diagnosis: Understanding



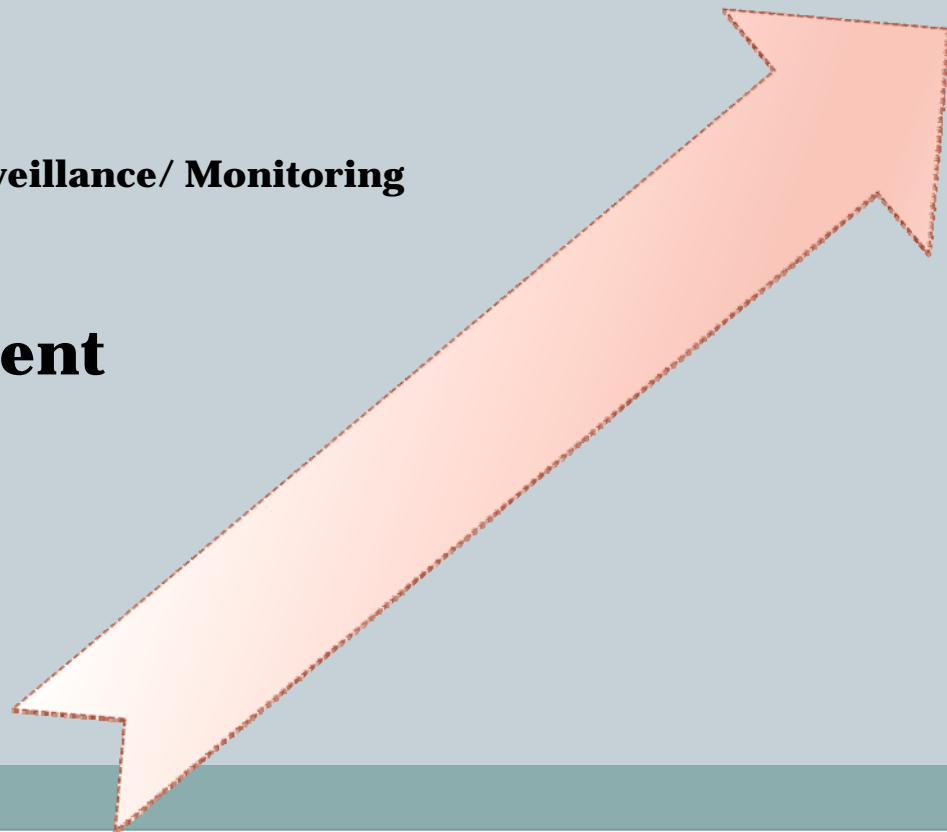
What is the global health response in ASGM?

**Better Health
???**

Surveillance/ Monitoring

Treatment

**Research &
Diagnosis**



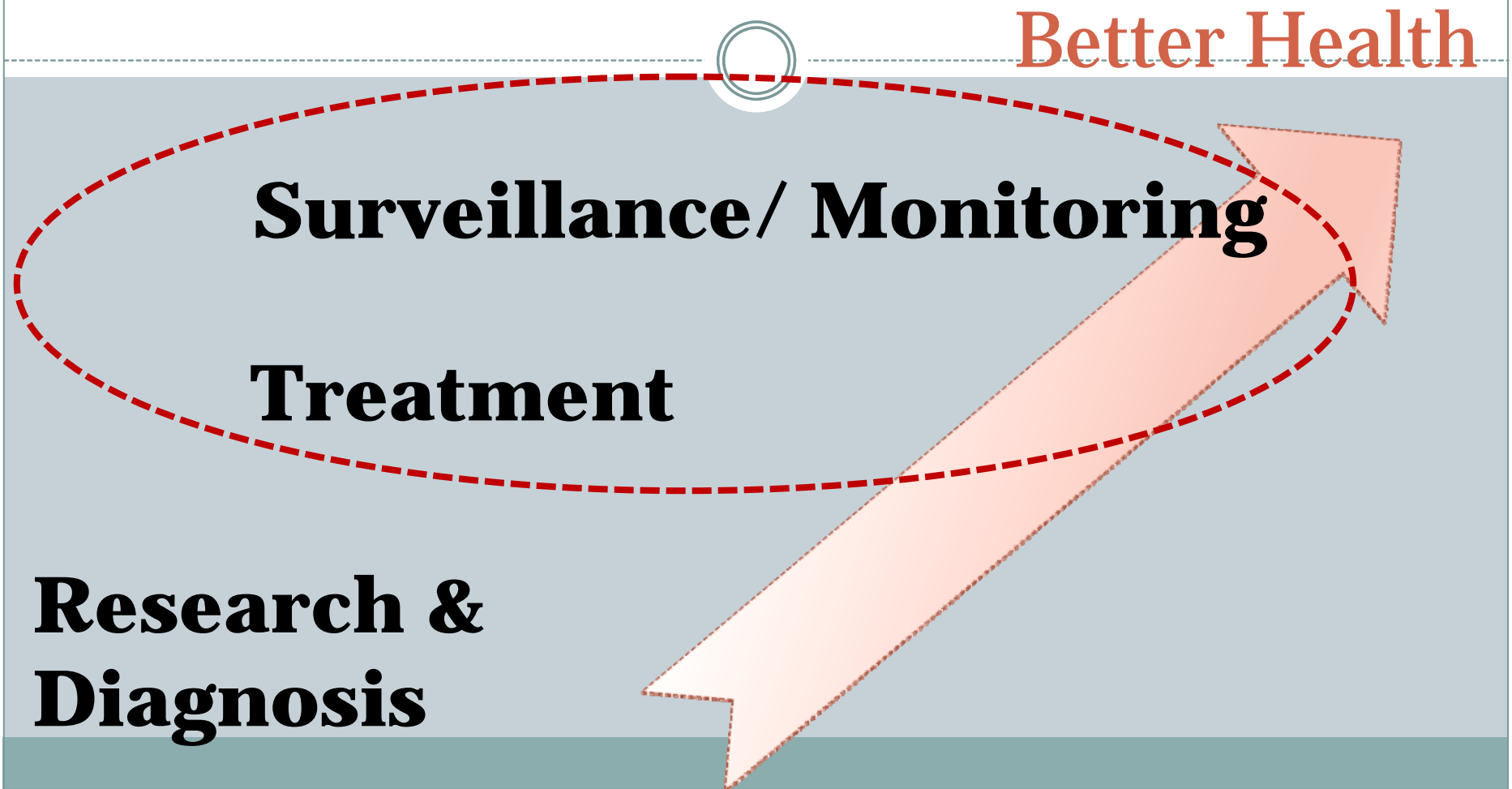
What is the global health response in ASGM?

Better Health

Surveillance/ Monitoring

Treatment

**Research &
Diagnosis**



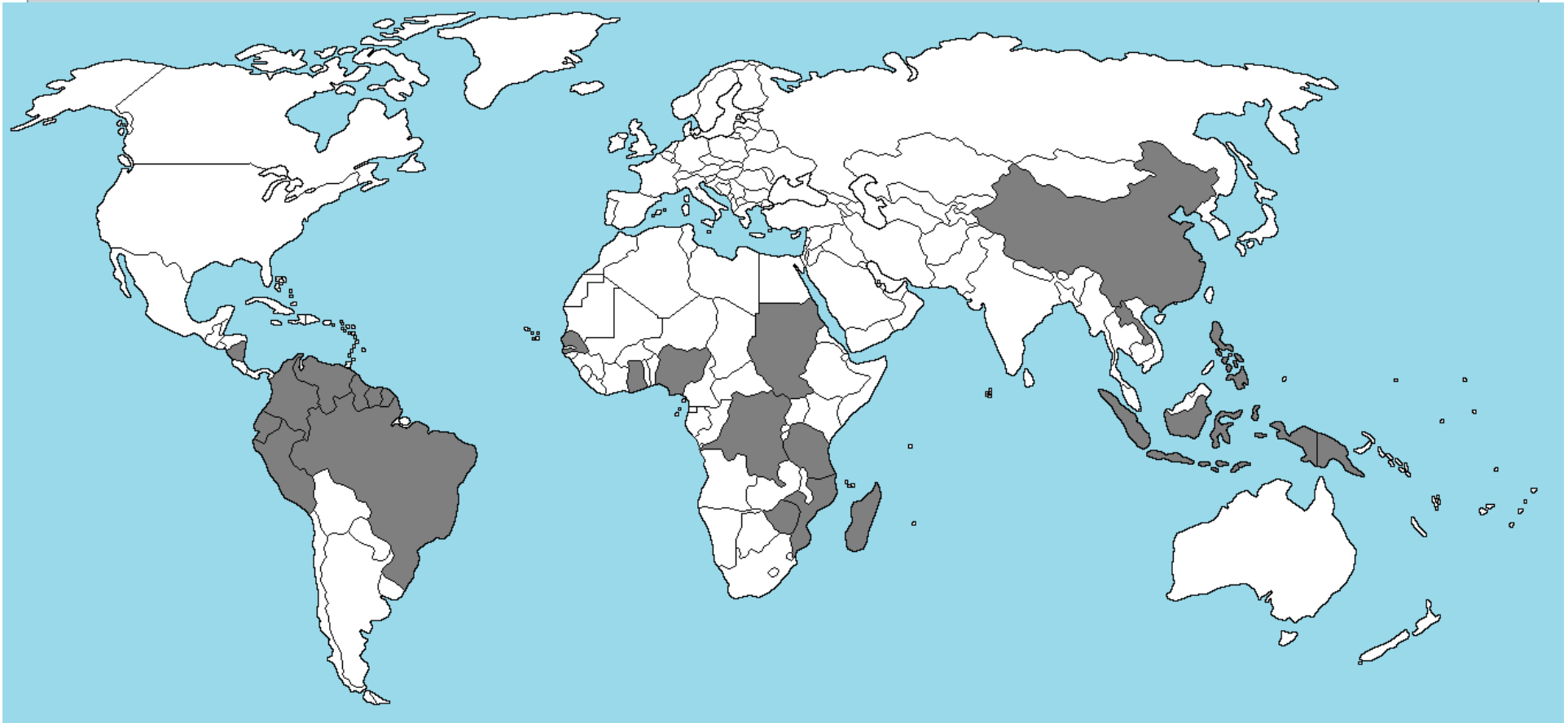
Health Interventions in the Field

What is being done?

- Community Training & Education
- Retort distribution
- Media campaigns
- Professional Training and Education
- Awareness raising



Retort Introduction: Is it working?



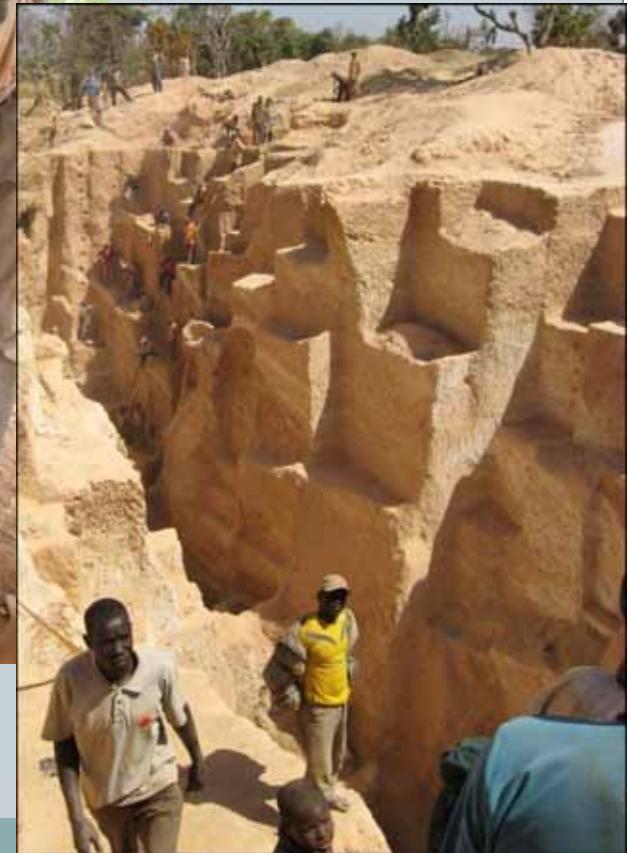
Retort Use



Health Field Interventions- Common Pitfalls



DOES KNOWLEDGE = BEHAVIOUR CHANGE?



Health Field Interventions- Common Pitfalls

 KNOWLEDGE \neq  BEHAVIOUR CHANGE

For a variety of behavioral changes:

- Smoking
- Dieting
- Exercising
- Mercury use
- Open burning amalgam

Health Field Interventions- Common Pitfalls

Perception: As seen from the outside...

MERCURY EXPOSURE

UNSAFE PRACTICES (MINE SHAFTS, etc)

DUST EXPOSURE

CHEMICAL EXPOSURE (CYANIDE, ACIDS...)

ALCOHOL/DRUG ABUSE

CHILD LABOUR

PROSTITUTION

ACCESS TO CLEAN WATER

HOUSEHOLD WASTE DISPOSAL

INFECTIOUS DISEASES

PRECARIOUS FINANCIAL SITUATION



Health Field Interventions- Common Pitfalls



Perception: As seen from the inside...

PRECARIOUS FINANCIAL SITUATION

INFECTIOUS DISEASES

ACCESS TO CLEAN WATER

HOUSEHOLD WASTE DISPOSAL

UNSAFE PRACTICES (SHAFTS...)

DUST EXPOSURE

ALCOHOL/DRUG ABUSE

CHILD LABOUR

PROSTITUTION

CHEMICAL EXPOSURE (CYANIDE, ACIDS...)

MERCURY EXPOSURE



Health Field Interventions- Common Pitfalls



Message without solutions



Health Field Interventions- Common Pitfalls



**Sustainability: High
Population Migration**



Health Field Interventions- Common Pitfalls



Relationships and Social/Legal Conditions

Changing the entire context for sustainable interventions



Sustainable Intervention: Changing the Conditions



- Adapting the National Policy and Messaging

“Increased **incomes** of artisanal and small--scale gold miners and **protection of human health** and the **environment** from toxic harm through **mercury--free** gold extraction methods.”

- *NSP-Philippines, 2011*

Sustainable Intervention: Changing the Conditions

- Increasing Social Pressure



Source: Daily Climate

Source: Venezuelaanalysis.com

Sustainable Intervention: Changing the Conditions

- Providing alternatives



Sustainable Intervention: Changing the Conditions

- **Harnessing ASGM to be a Community Health Driver**



Rolling Fund
Community Tax
Specific Instrument Tax
Coop membership
...



Source: <http://www.toiletwinning.org>



Sustainable Intervention: Changing the Conditions

- Investing in sustainability



Training health professionals
and community workers



Sustainable Intervention: Changing the Conditions



- Work together towards improving health



Ministry of Mines
Ministry of Environment
Ministry of Health

Donor Agency
IGOs
NGOs

Summary:

Making it easy to choose well

1. Political Context
2. Social Context
3. Technical Context
4. Financial Context
5. Sustainability
6. Collaboration



Thank you!

mrichard@artisanalgold.org

+1.250.590.9433

www.artisanalgold.org



**ARTISANAL
GOLD COUNCIL**