

# Update on UNEP Mercury



## Mercury - A priority for action

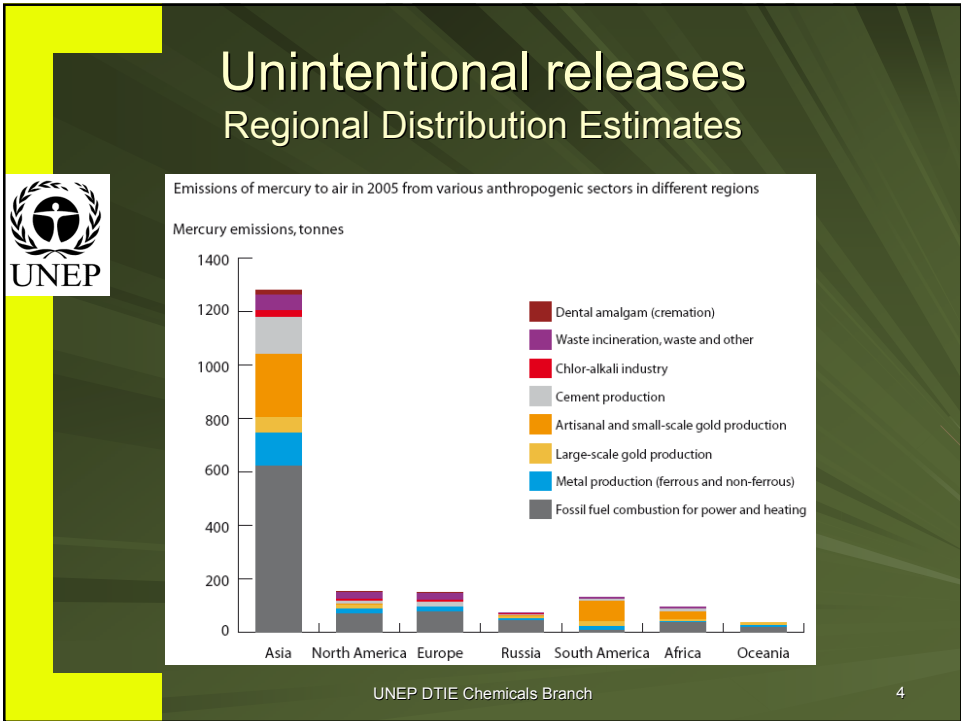
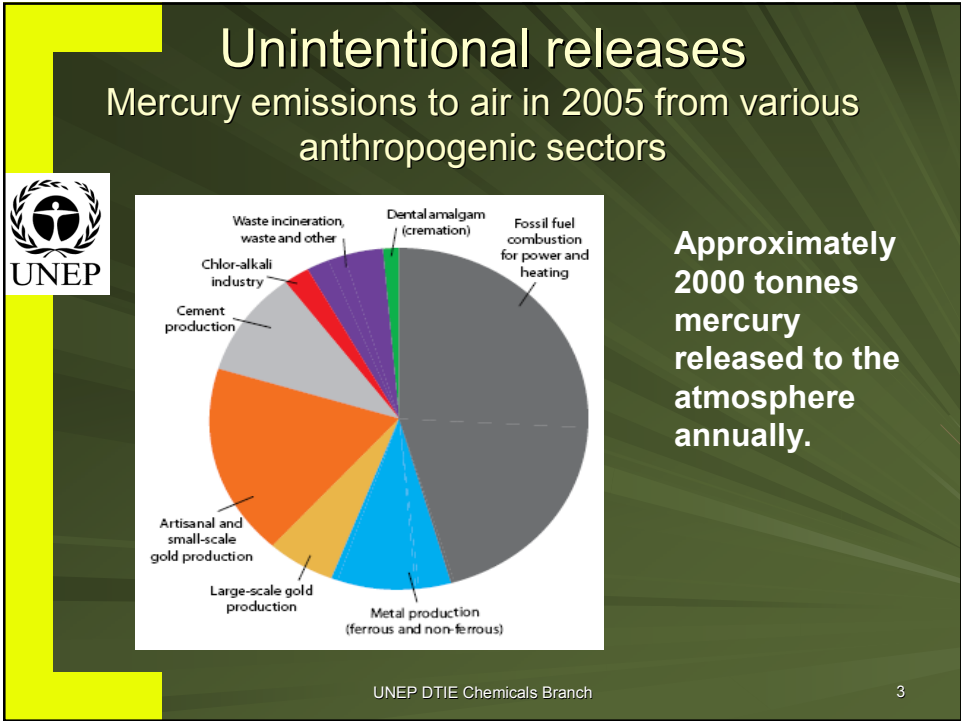
Brenda Koekkoek  
Programme Officer  
United Nations Environment Programme



Source: UNIDO



Mercury is a toxic and persistent substance that can have adverse impacts on human health and the environment. It is released from various sources throughout the world and can be transported great distances via the atmosphere, crossing national borders.

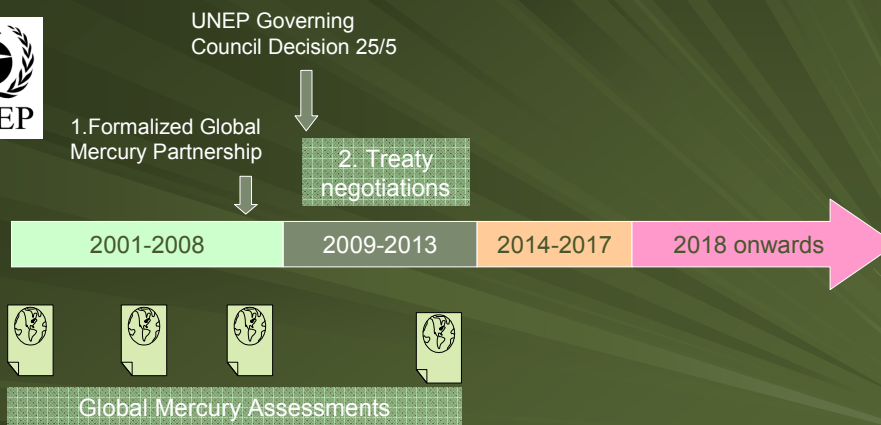


# Global mercury supply context (2007)



Main mercury sources	Metric tonnes/year
<b>Primary mercury mining</b>	<b>1300-1600</b>
<b>By-product mercury recovery</b>	<b>400-600</b>
<b>Chlor-alkali facilities</b>	<b>700-900</b>
<b>Recycling of mercury catalysts, wastes and products</b>	<b>600-800</b>
<b>Commercially available mercury stocks</b>	<b>As needed (+)</b>
<b>TOTAL</b>	<b>3100-3900+</b>

# Mercury on the international stage



# 1. Global Mercury Partnership



- Established collaboration since 2005
- Formalized in 2008
- Operates with 7 partnership areas and one Advisory Group
- Currently 71 official Partners (balance of partners, include many parent organizations of industry).



## Currently 7 partnership areas



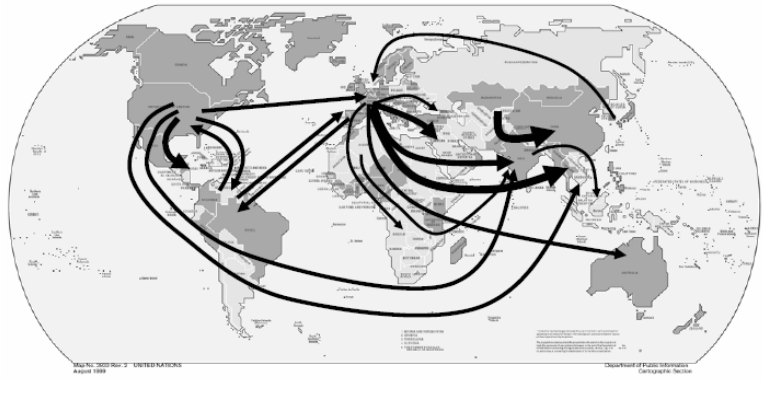
1. artisanal/small-scale gold mining;
2. coal combustion;
3. chlor-alkali sector;
4. reduction in products;
5. air transport and fate research;
6. waste management;
7. supply & storage.

Other possible areas: cement production, non-ferrous metals mining

## Trade Flows are an important factor through our work



Figure 4 Commodity mercury shipments among world regions, 2004



From: UNEP Chemicals. Summary of Supply, Trade and Demand Information on Mercury. Nov 2006

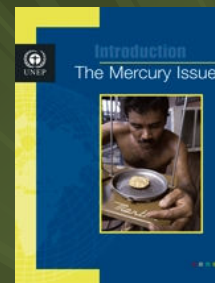
UNEP DTIE Chemicals Branch

9

## Main delivery tools / mechanisms



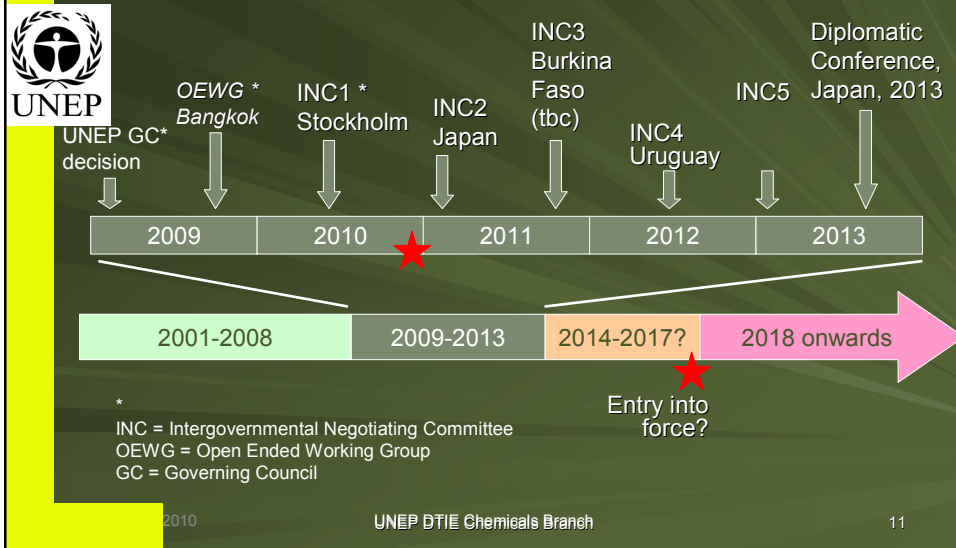
- Generate baseline information
- Advocacy / awareness raising / information exchange
- Development of guidance materials
- Strengthening national capacity to identify problems / take strategic actions



UNEP DTIE Chemicals Branch

10

## 2. The treaty negotiation process



### INC1, Stockholm, 7-11 June 2010



Almost 450 delegates, including 120 Governments and 80 NGOs representing a broad spectrum of interests



- Adoption of the Rules of procedure
- Election of the Chair : Mr. Fernando Lugris, Uruguay
- Election of the 10 member bureau:
  - ❖ Africa: Oumar Diaoure Cissé (Mali) & Abiola Olanipekun (Nigeria)
  - ❖ Asia & Pacific: Yingxian Xia (China) & Mohammed Kashashneh (Jordan)
  - ❖ Central & Eastern Europe: Katerina Sebkova (Czech Republic) & Vladimir Lenev (Russian Fed.)
  - ❖ Latin America & Caribbean: Gillian Guthrie (Jamaica) & Fernando Lugris (Uruguay)
  - ❖ Western Europe & Others: Nina Cromnier (Sweden) & John Thompson (USA)

## INC2 – Chiba, Japan 24 to 28 January 2011



- Intensive negotiations expected to commence, possibly based on the “draft elements paper” prepared by the secretariat
- Intention to work in plenary to the extent possible, but envisaged:
  - Legal group to be established at INC2
  - Other contact groups on specific issues to be established as needed, with time-limited mandates
- Technical briefings, regional meetings and NGO event on Sunday



## A timely opportunity to for ASGM action at the global level...



- Largest demand sector for mercury
  - Negotiation of the global mercury instrument
  - Global Mercury Partnership vehicle for immediate actions
- The current value of gold!!





**For further information please visit:**

[www.unep.org/hazardoussubstances/Mercury/tabid/434/Default.aspx](http://www.unep.org/hazardoussubstances/Mercury/tabid/434/Default.aspx)

**Brenda Koekkoek**  
**Brenda.koekkoek@unep.org**