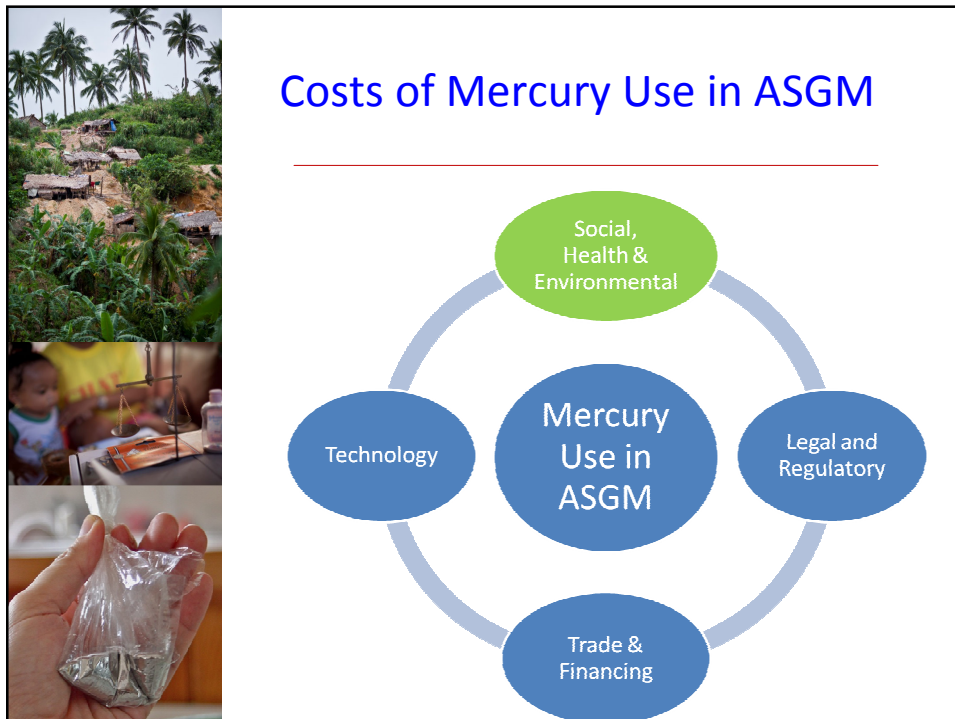


## PANEL SESSION 03

---

### Social and Health Issues in Artisanal and Small-scale Gold Mining



## Social and Health Issues in Artisanal and Small-scale Gold Mining

---

- Exploitation of workers
- Exposure of miners to health and occupational hazards
- Exposure of mining communities and adjacent regions to health and environmental hazards
- Gender issues in ASGM
- Child labor

## Social and Health Issues in Artisanal and Small-scale Gold Mining

---

- Break out of diseases in mining communities due to lack or absence of access to basic health services
- Land and resource conflicts in mining areas
- Unregulated migration in gold rush areas