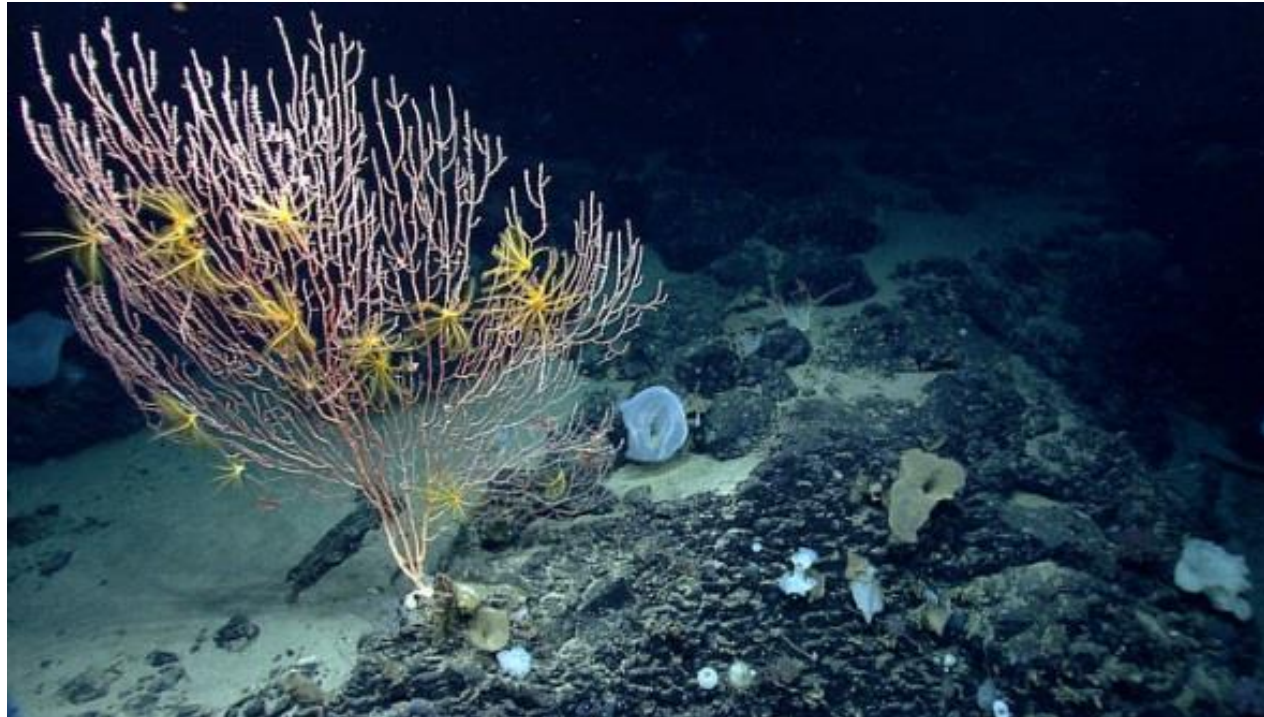


# FAO/UNEP GEF ABNJ Deep Seas Project

## Area-based planning for deep sea ecosystems in Areas Beyond National Jurisdiction (ABNJ)



**Hannah Thomas**

*Senior Programme Officer, Marine Programme*  
**UNEP World Conservation Monitoring Centre**

# FAO/UNEP GEF ABNJ Deep Seas Project

To enhance sustainability in the use of deep-sea living resources and biodiversity conservation in Areas Beyond National Jurisdiction (ABNJ)

Improved application of policy and legal frameworks



Reducing adverse impacts on VMEs and EBSAs

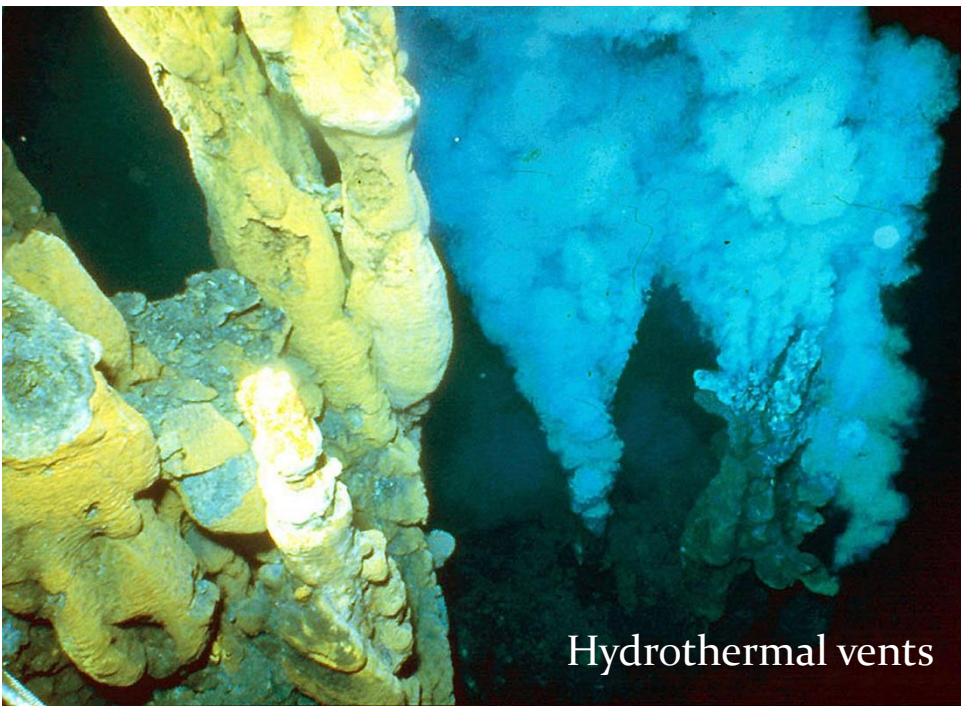


Improved planning and adaptive management for ABNJ deep-sea fisheries



Development and testing of a methodology for area-based planning

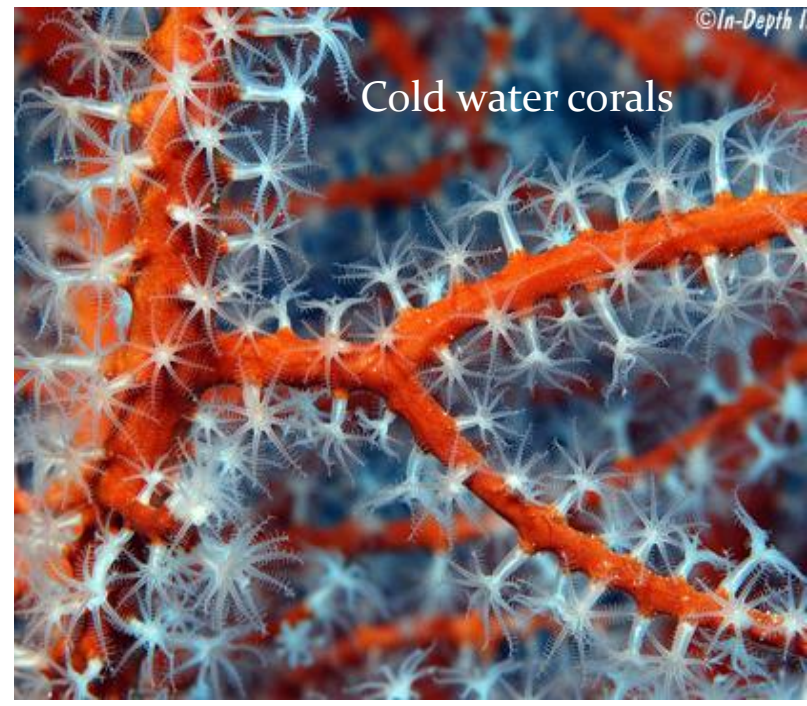




Hydrothermal vents



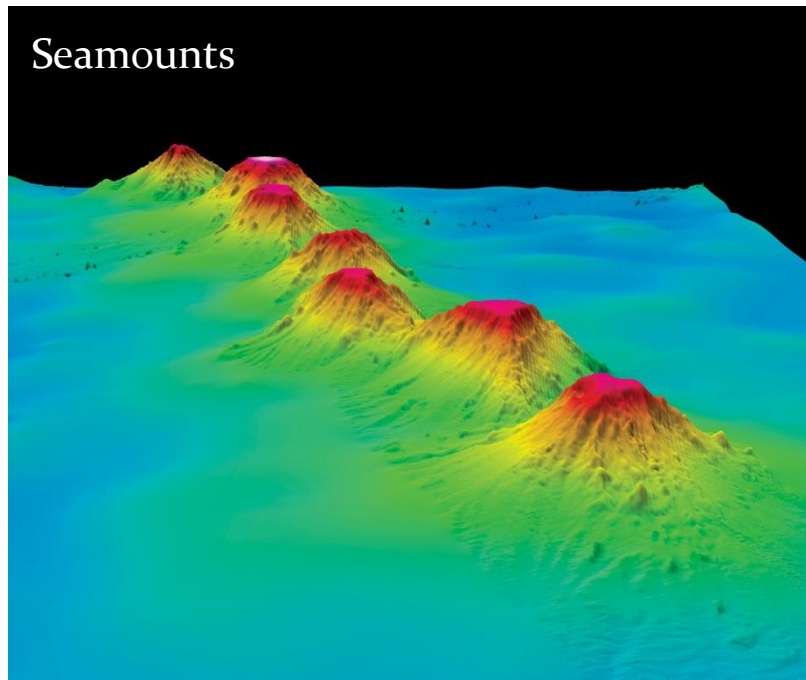
Deep sea sponges



Cold water corals



Cold seeps



Seamounts



Rich seamount biodiversity



Deep sea fishing



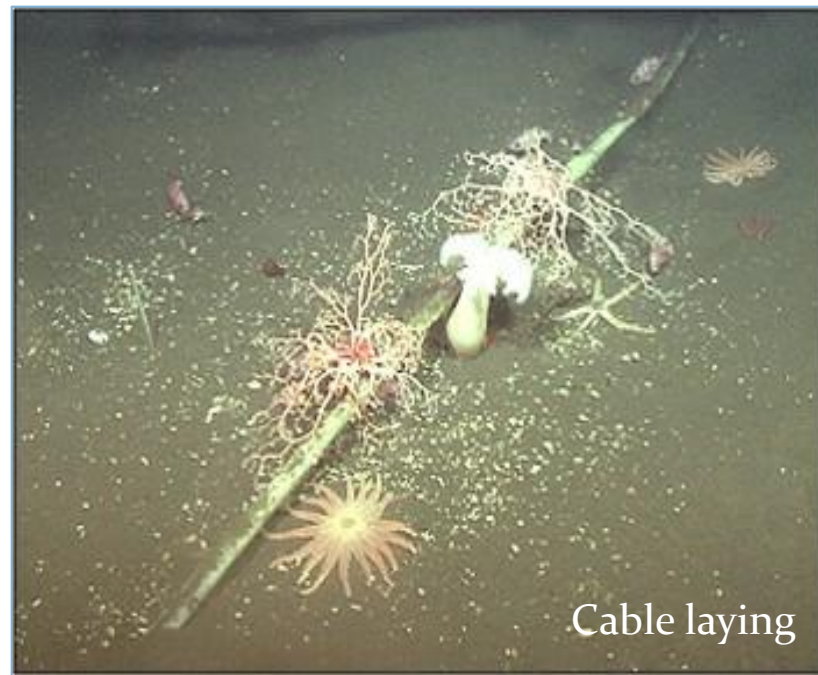
Deep sea mining



Shipping



Oil and gas exploration



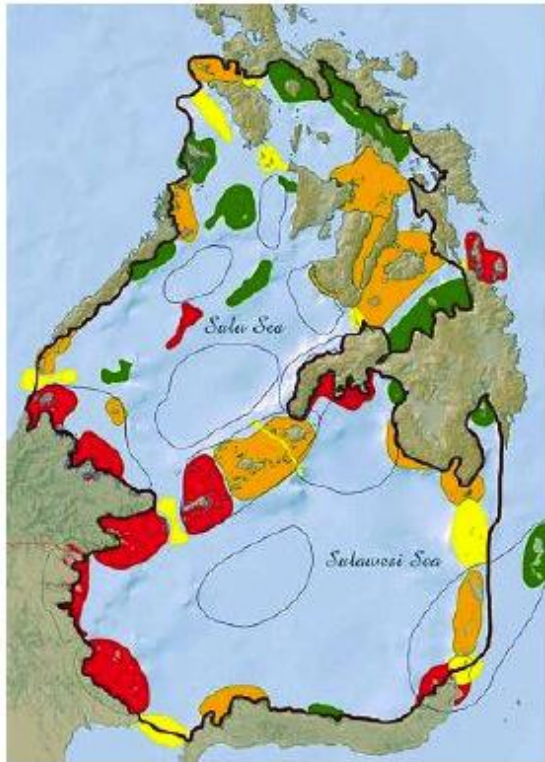
Cable laying



Offshore wind energy

# Could area based planning tools be a solution?

## MPA network planning

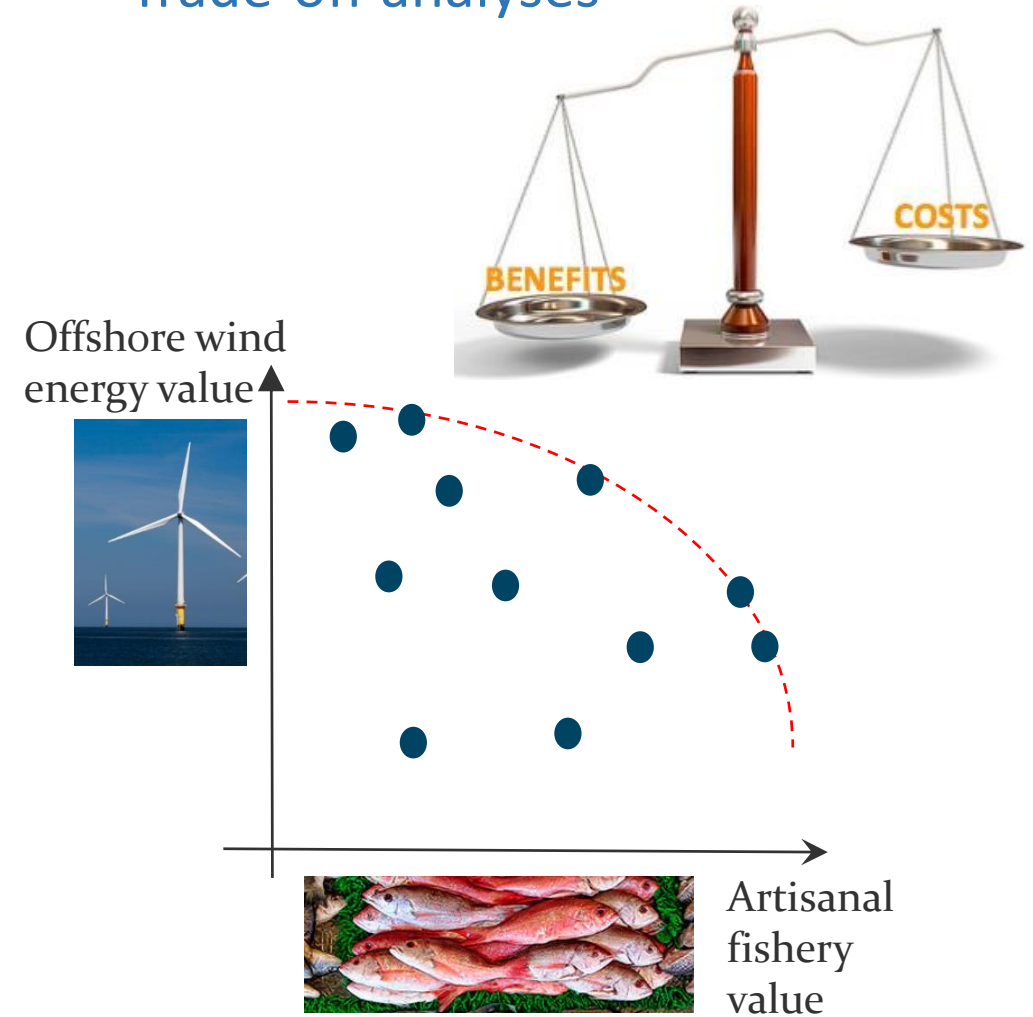


- Outstanding for biodiversity in the Indo-Pacific Region
- Outstanding for biodiversity in the SSME
- Outstanding for biodiversity in the sub-region of the SSME
- Marine corridors
- Areas of importance for pelagic fisheries and migratory marine species

## Marine Spatial Planning

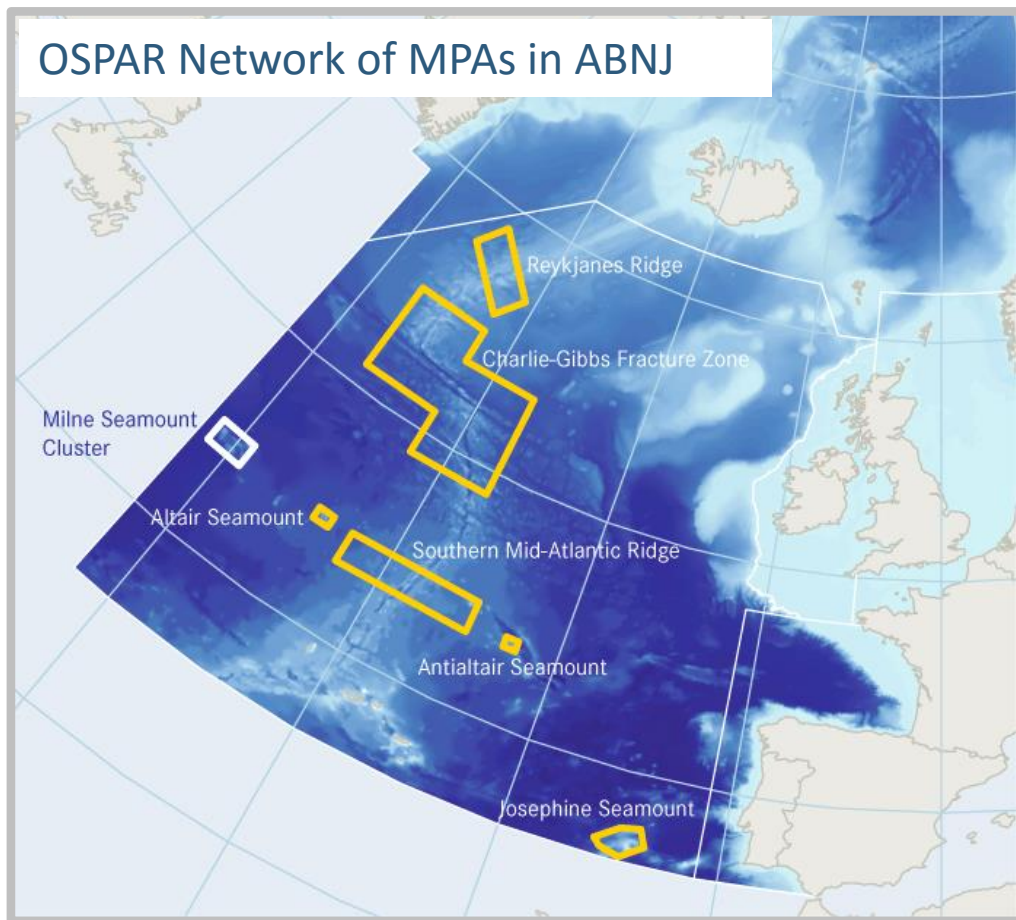


## Trade-off analyses

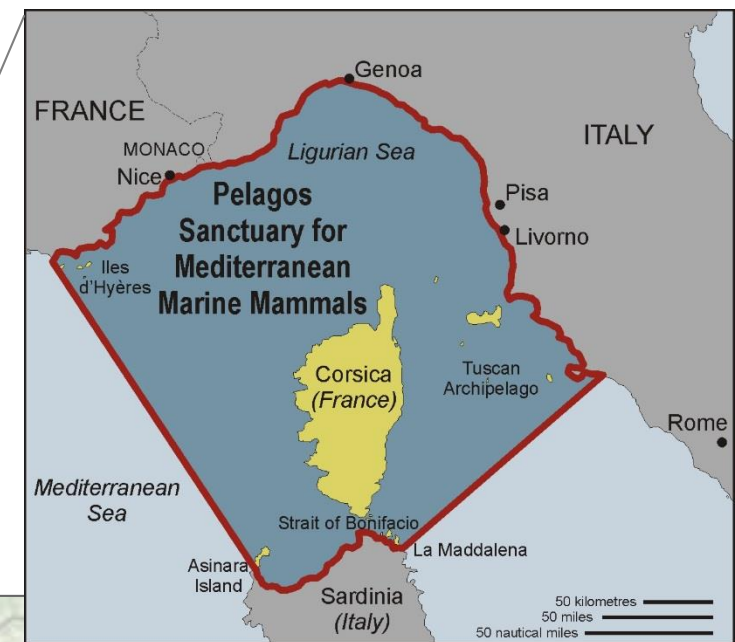
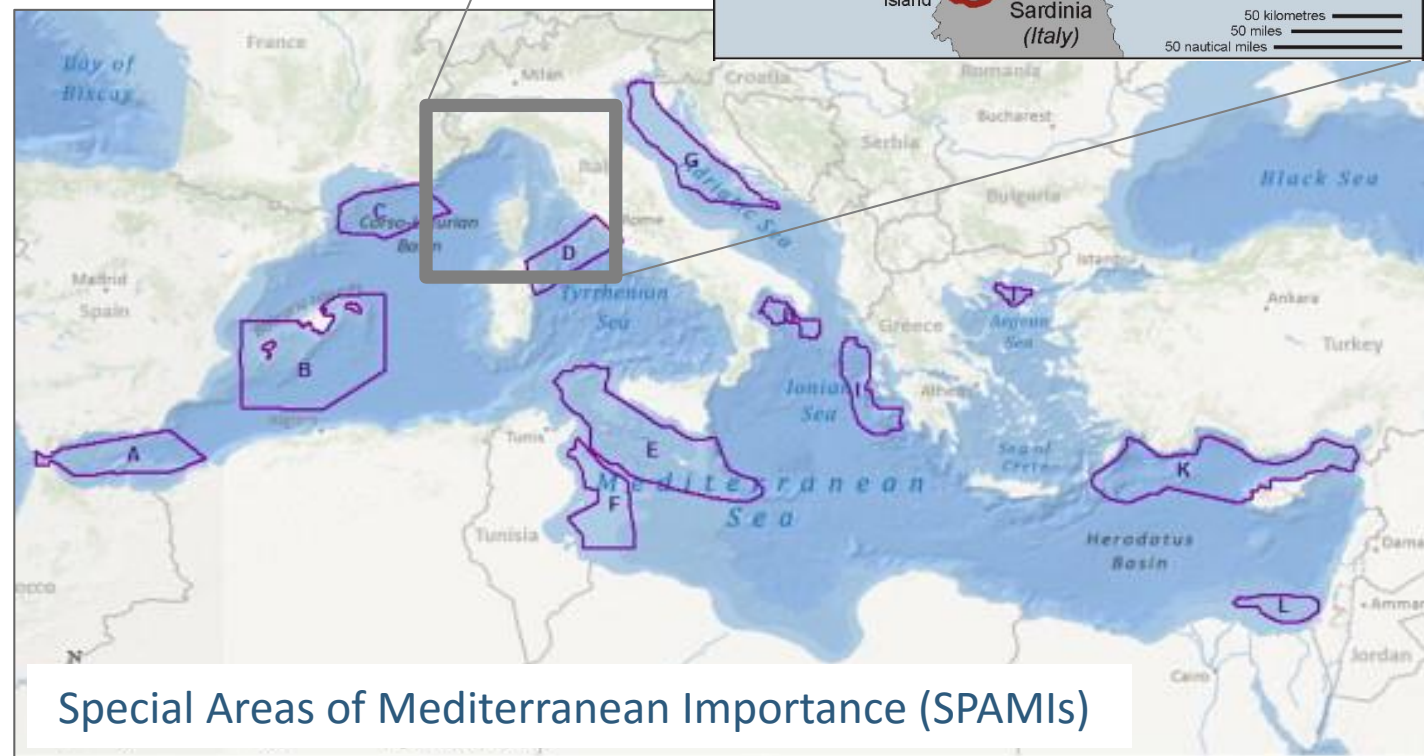


# Can we learn from regional examples of area-based planning in ABNJ?

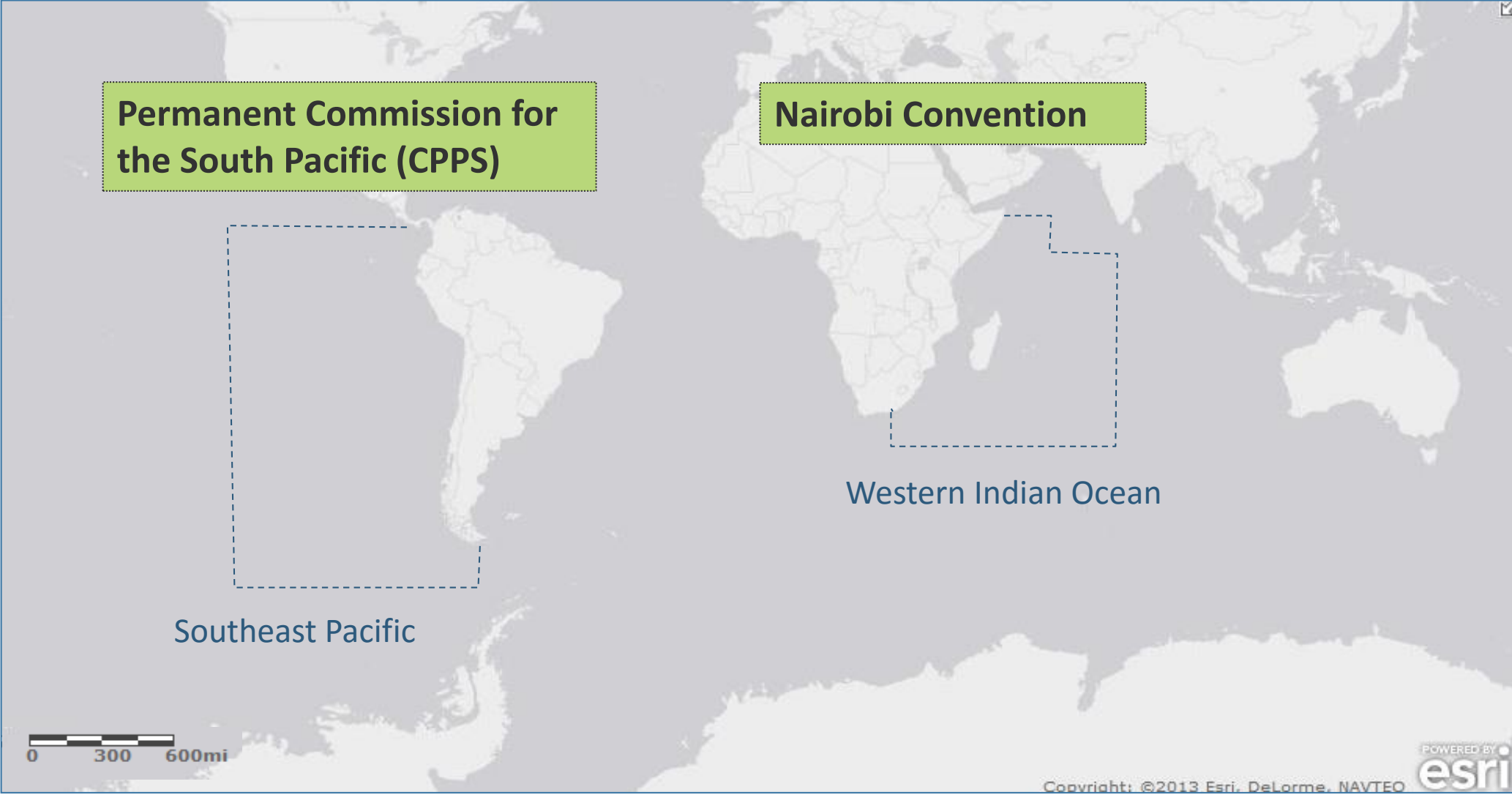
## North East Atlantic



## Mediterranean



# Could we test these area-based planning tools in pilot regions?



# Conclusions

- Deep sea ecosystems in ABNJ are under serious threat from cumulative human impacts
- Component 4 of the FAO/UNEP GEF ABNJ Deep Seas Project aims to:
  1. Test the applicability of area-based planning tools to deep sea ABNJ
  2. Share lessons learned from regional experiences
  3. Test appropriate area-based planning tools in the Western Indian Ocean and Southeast Pacific

