

Science Division welcomes  
new members of the Committee  
of Permanent Representatives!



---

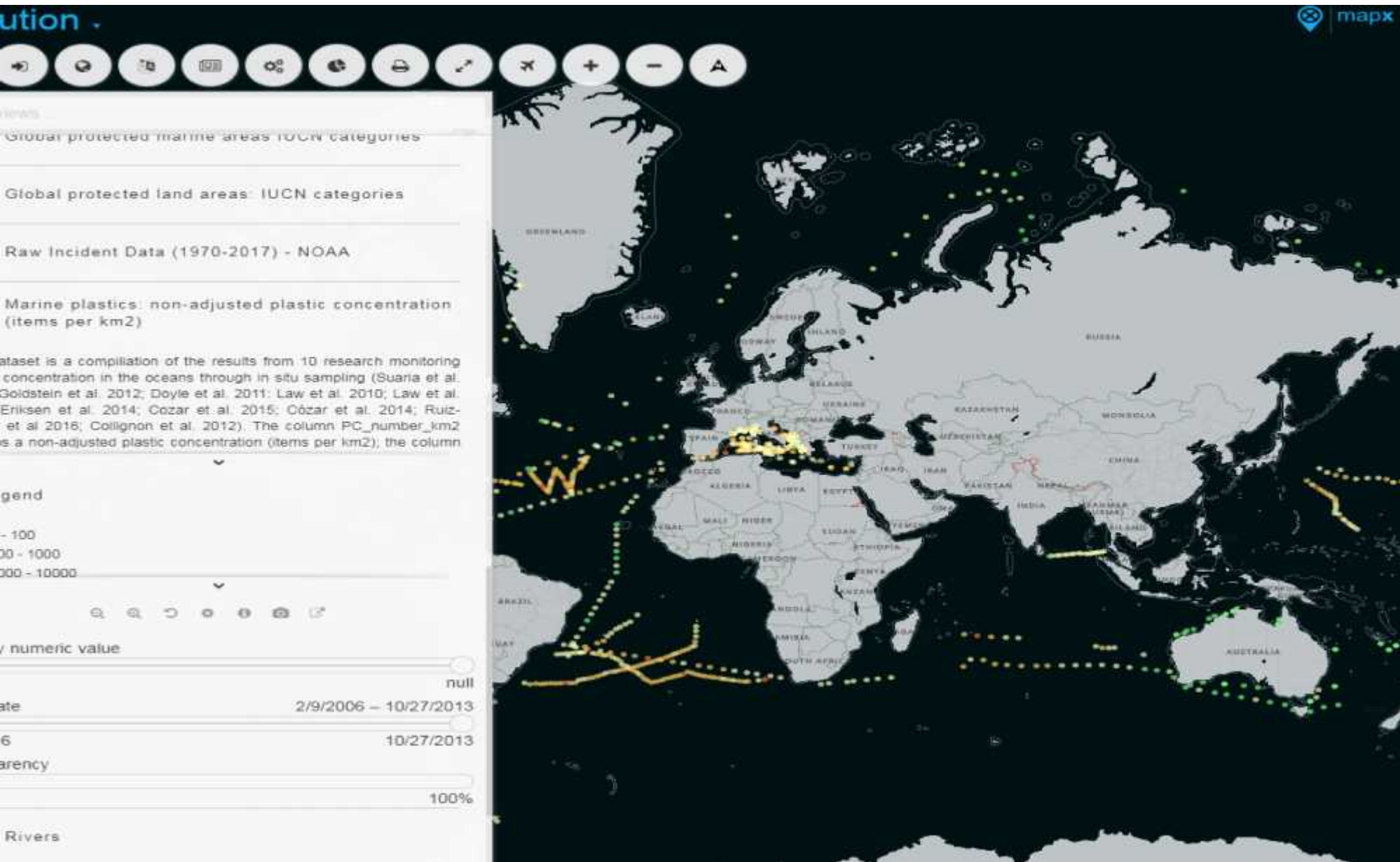
*Science and Data for Innovative Policy  
and  
Green Solutions*

---



# Data for Timely Decisions

---



# World Environment Situation Room



# Science

---

*for Smart Policies*

---



HEALTHY  
PLANET  
HEALTHY  
PEOPLE



# Thematic Assessments – Science for Decision Making



## The Emissions Gap Report 2017

A UN Environment Synthesis Report

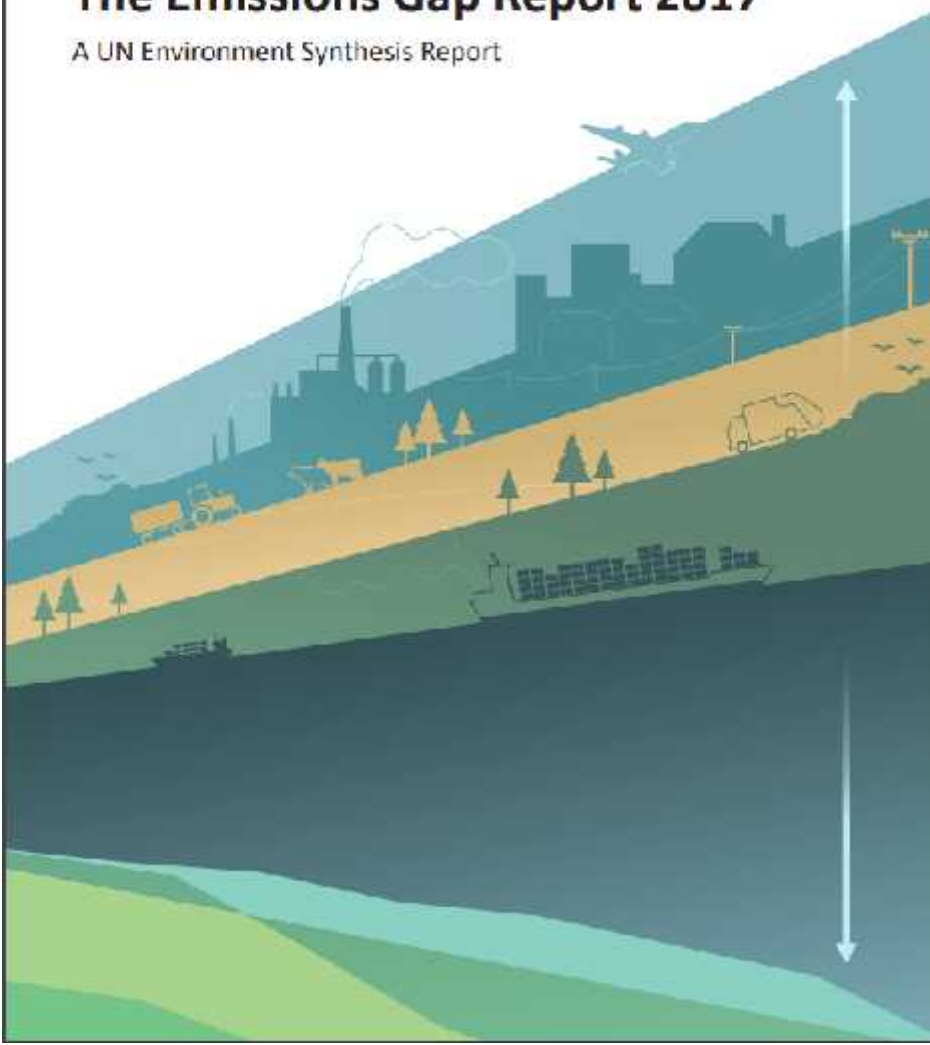
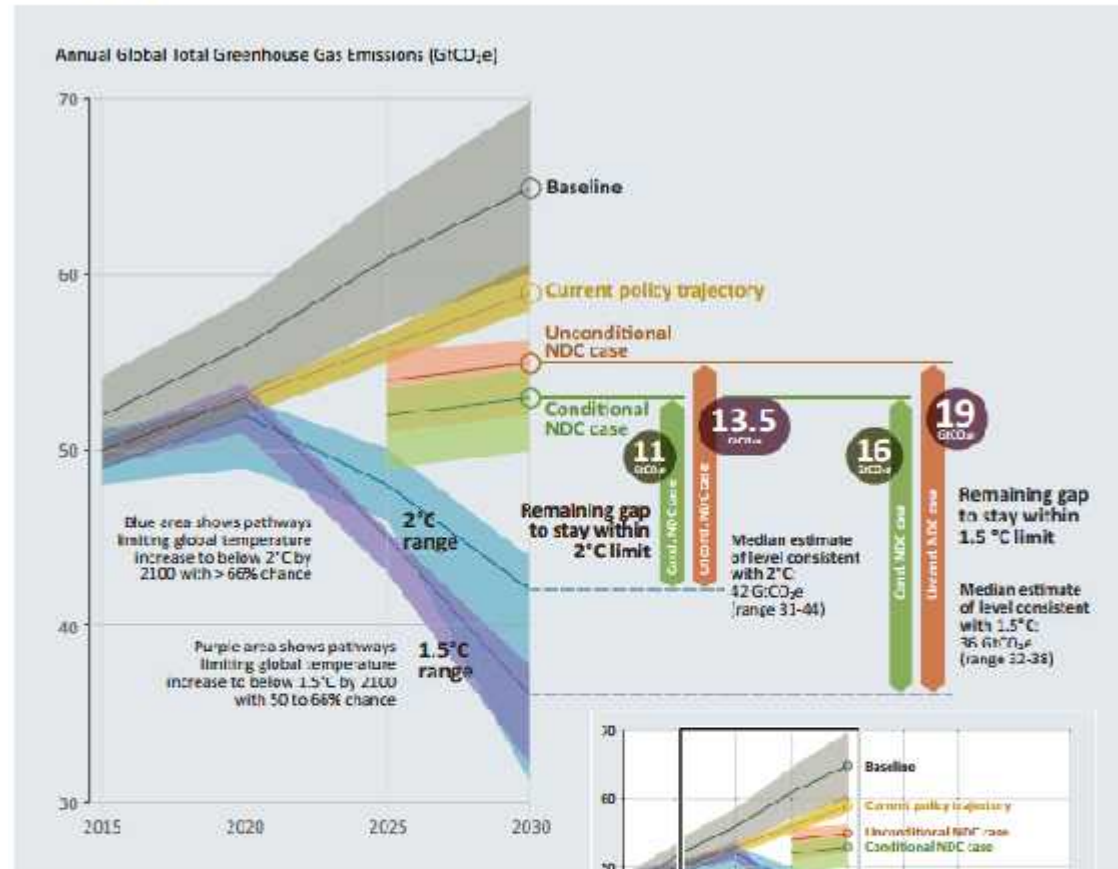
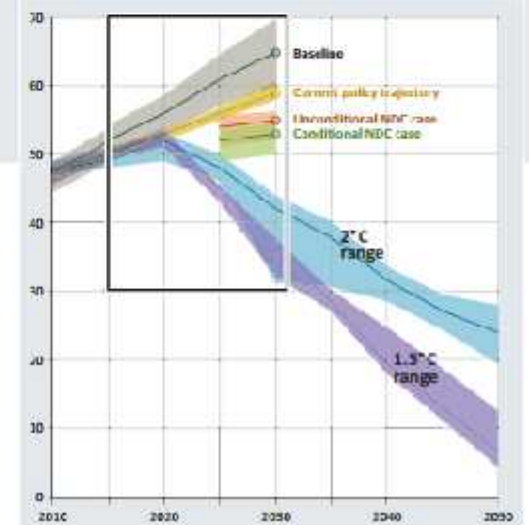


Figure ES.2: Global greenhouse gas emissions under different scenarios and the emissions gap in 2030 (median estimate and 10<sup>th</sup> to 90<sup>th</sup> percentile range).



Note: the emissions range for 1.5°C is smaller than for 2°C, as a smaller number of studies for 1.5°C are available. For current policy, the minimum-maximum annual associated studies are provided.





# Innovation

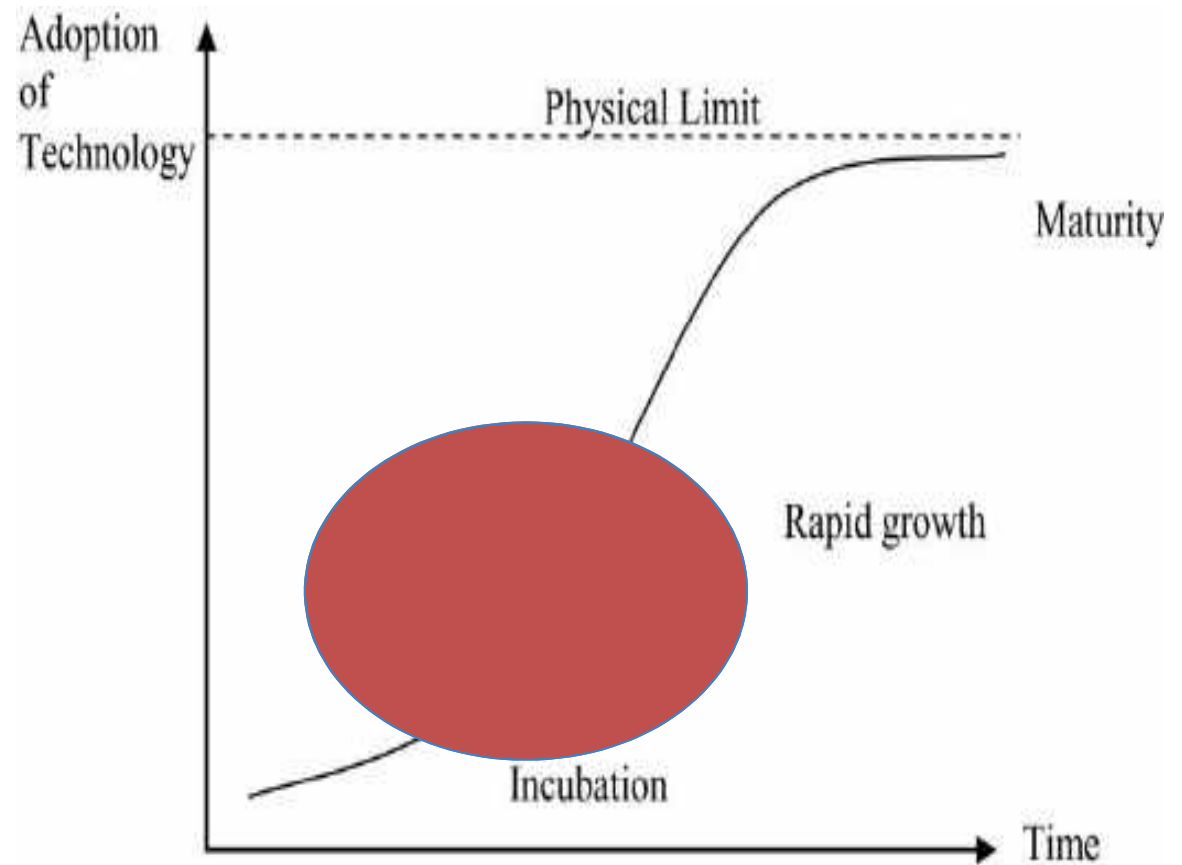
---

*For Green Solutions*

---

# Innovation for Green Solutions

## Transformational Innovation follows classic S-curve







SCIENCE  
POLICY  
BUSINESS  
FORUM

## In figures

1300 Participants including top business leaders

24 Specialized Sessions

Opening session trended as #1 on social media in Kenya

Over \$400,000 USD fundraised in 3 months

Outcome of first sessions: Projects and initiatives exceeding USD 5M



BABEL CONVENTION

NOTTENDAM CONVENTION

STOCKHOLM CONVENTION

PHILIPS



European Space Agency



THOMSON  
REUTERS



GLOBAL GEOGRAPHIC KNOWLEDGE

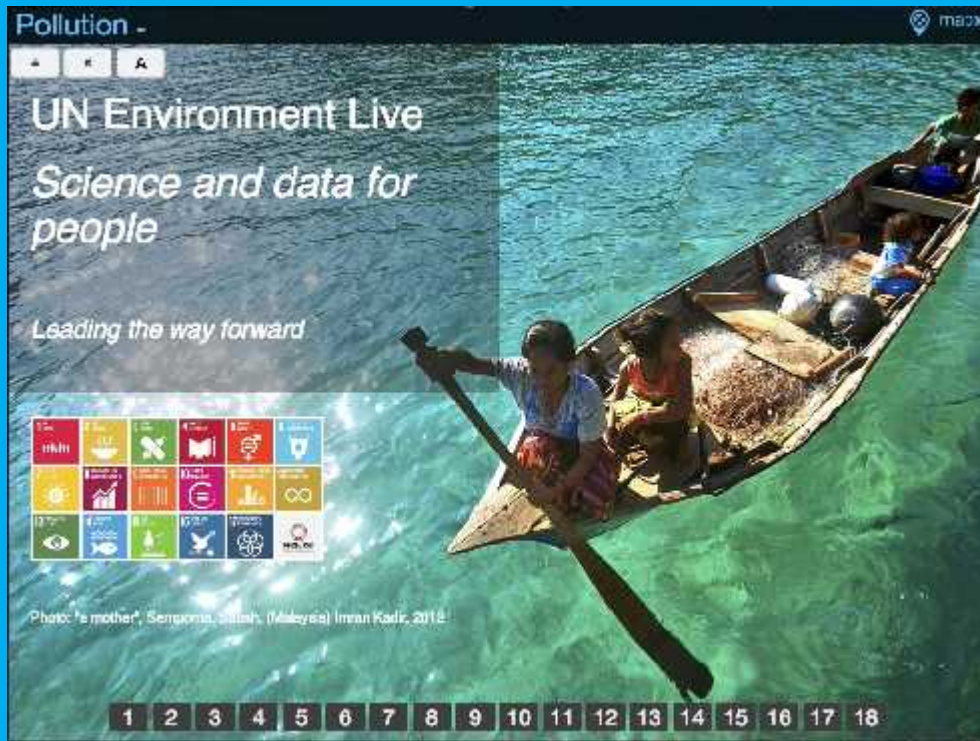


Institut de Recherche  
pour le Développement  
FRANCE



IPCC  
INTERNATIONAL PANEL OF CLIMATE EXPERTS





Thank you