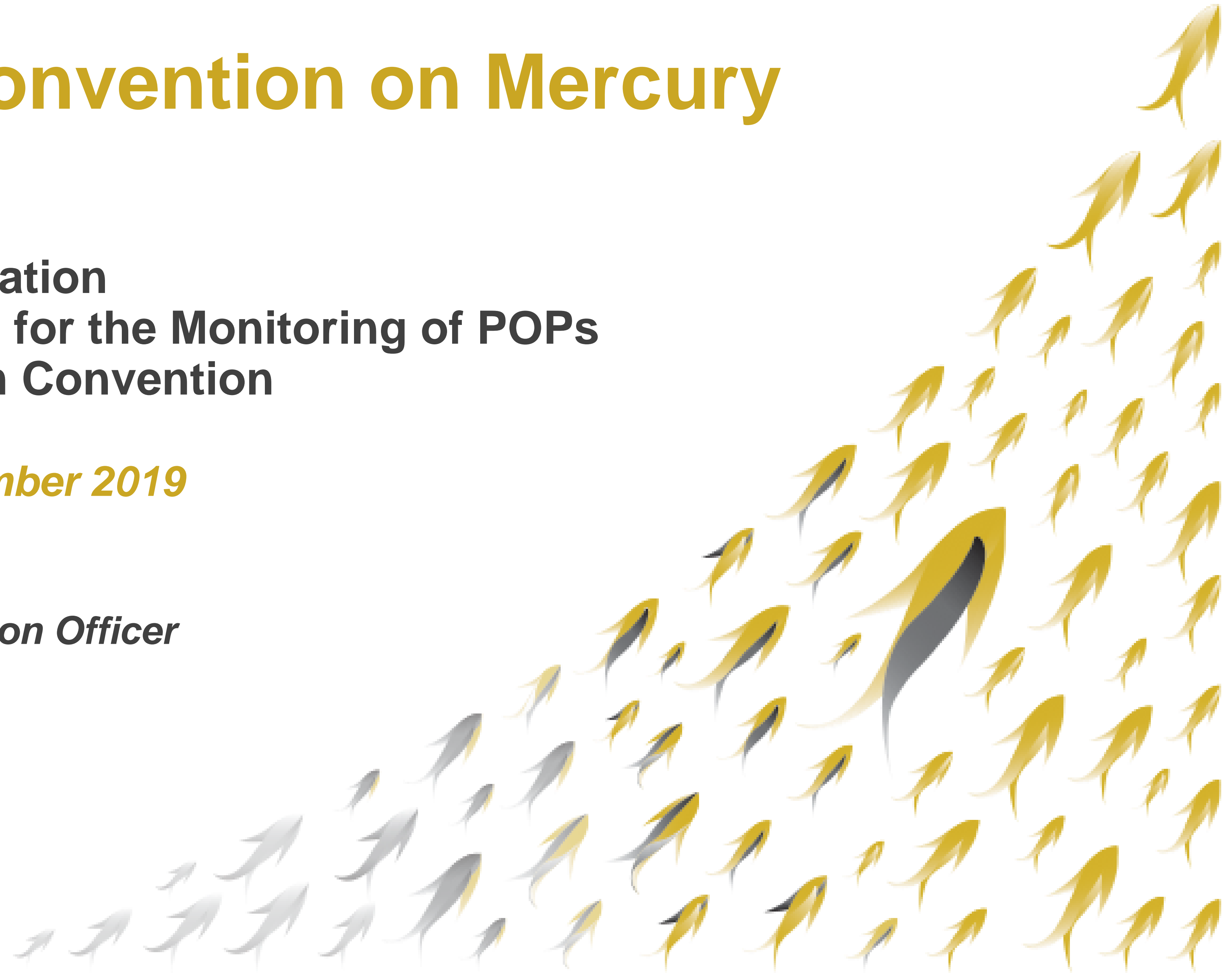


Minamata Convention on Mercury

**Stakeholder Consultation
Securing Conditions for the Monitoring of POPs
under the Stockholm Convention**

Brisbane, 10-11 December 2019

**Claudia ten Have
*Senior Policy Coordination Officer***

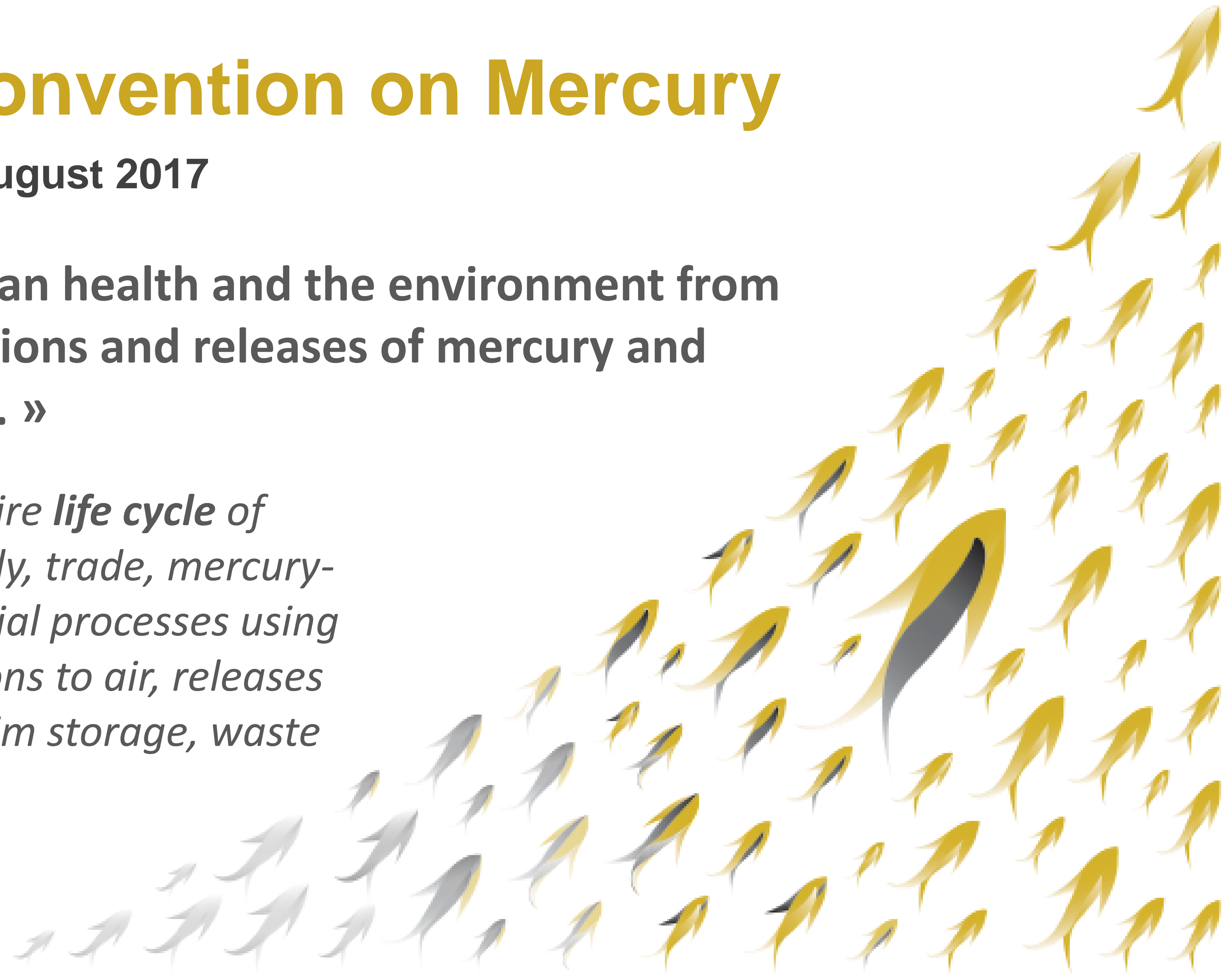


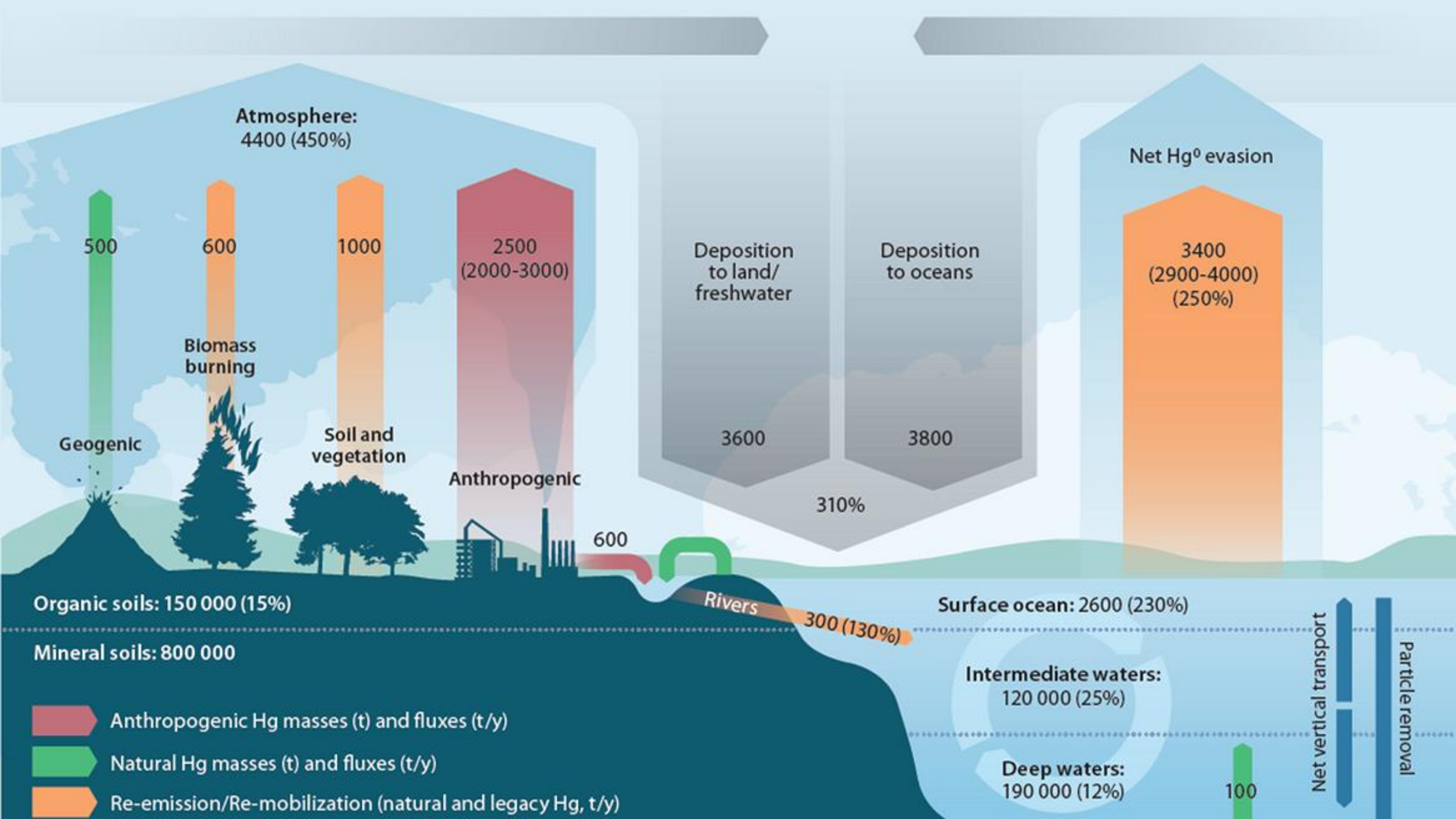
Minamata Convention on Mercury

Entry into Force: 16 August 2017

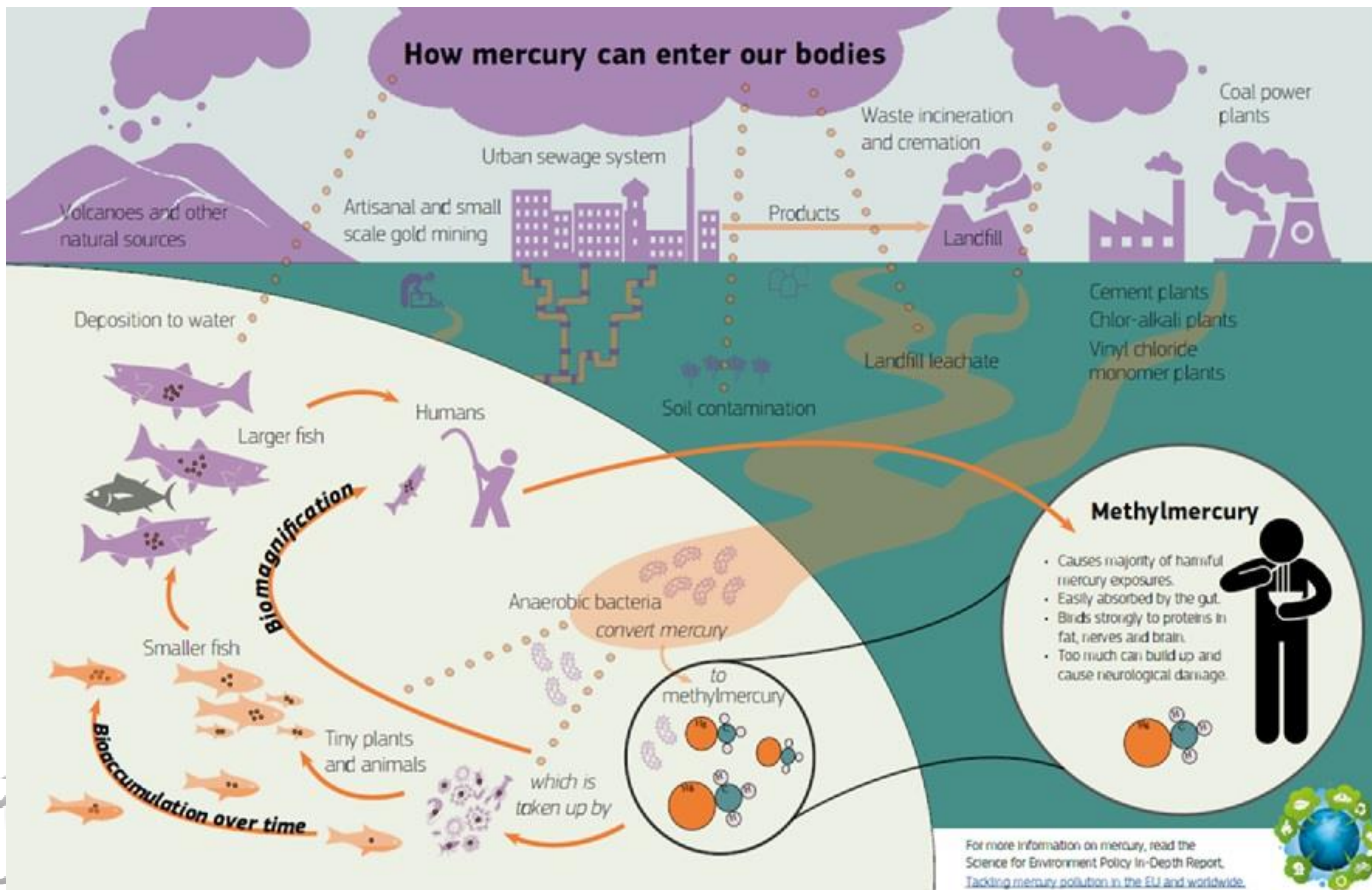
« (...) to protect human health and the environment from anthropogenic emissions and releases of mercury and mercury compounds. »

*Provisions cover the entire **life cycle** of mercury, including supply, trade, mercury-added products, industrial processes using mercury, ASGM, emissions to air, releases to land and water, interim storage, waste and contaminated sites.*





How mercury can enter our bodies



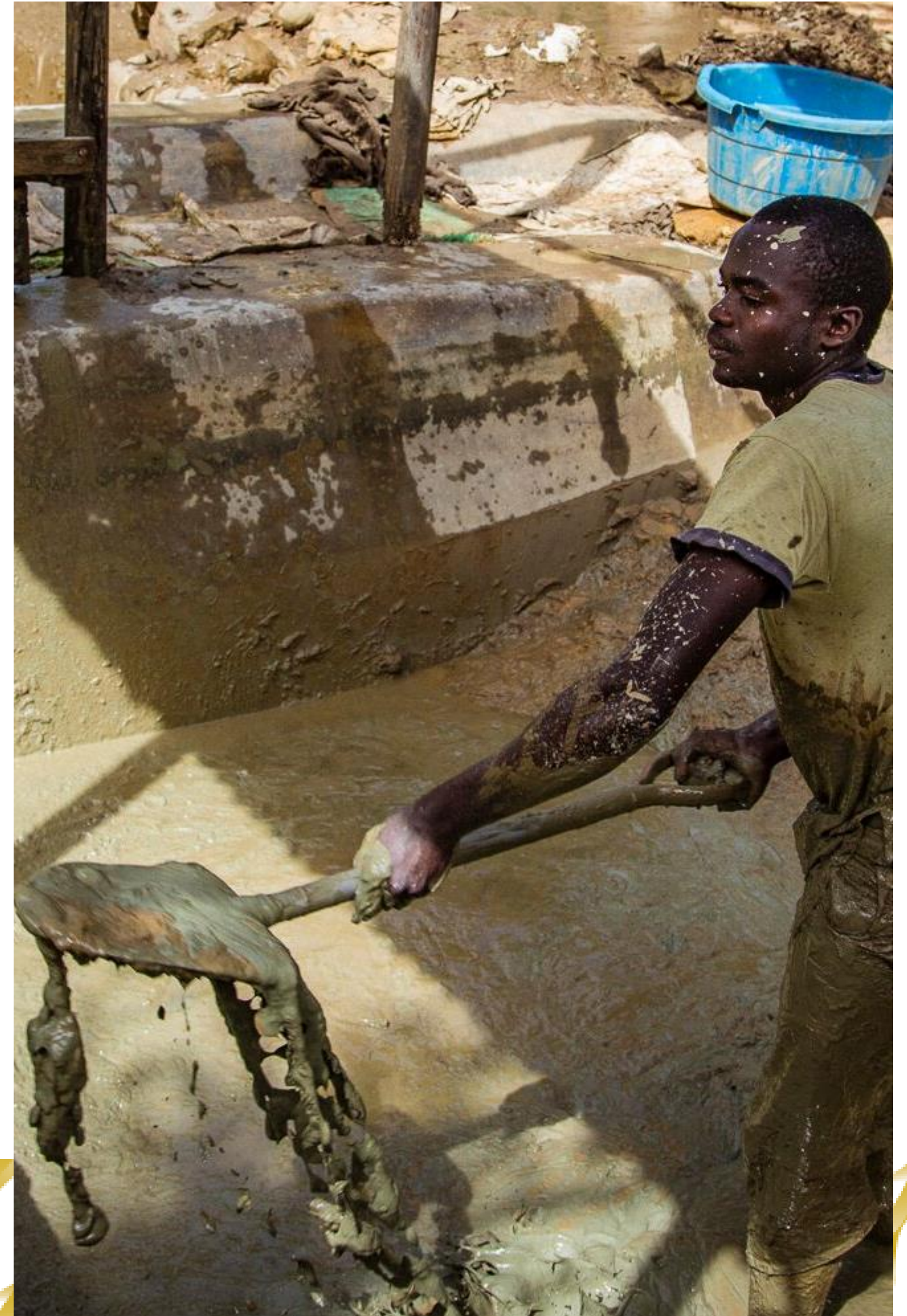
Methylmercury

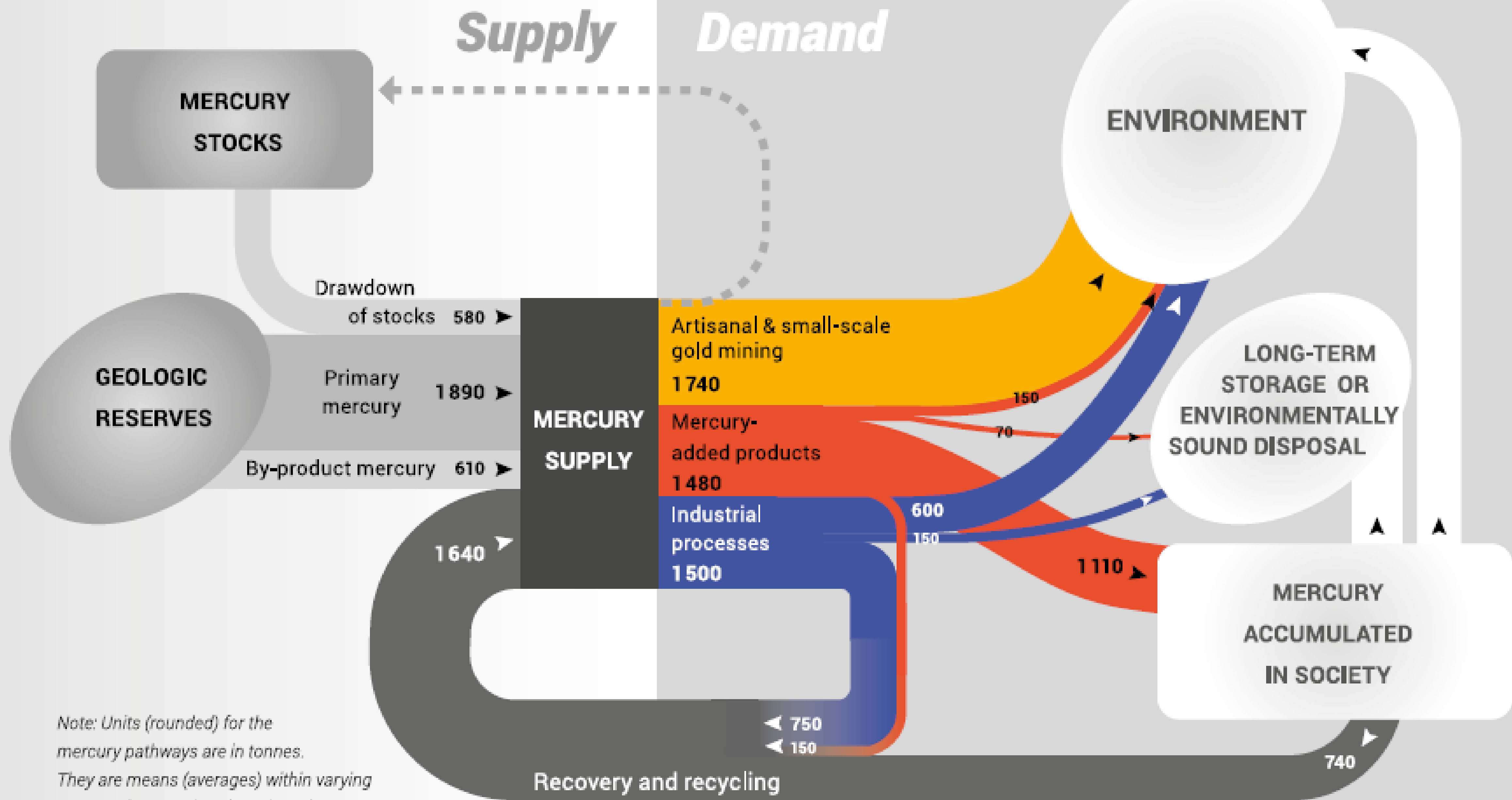
- Causes majority of harmful mercury exposures.
- Easily absorbed by the gut.
- Binds strongly to proteins in fat, nerves and brain.
- Too much can build up and cause neurological damage.



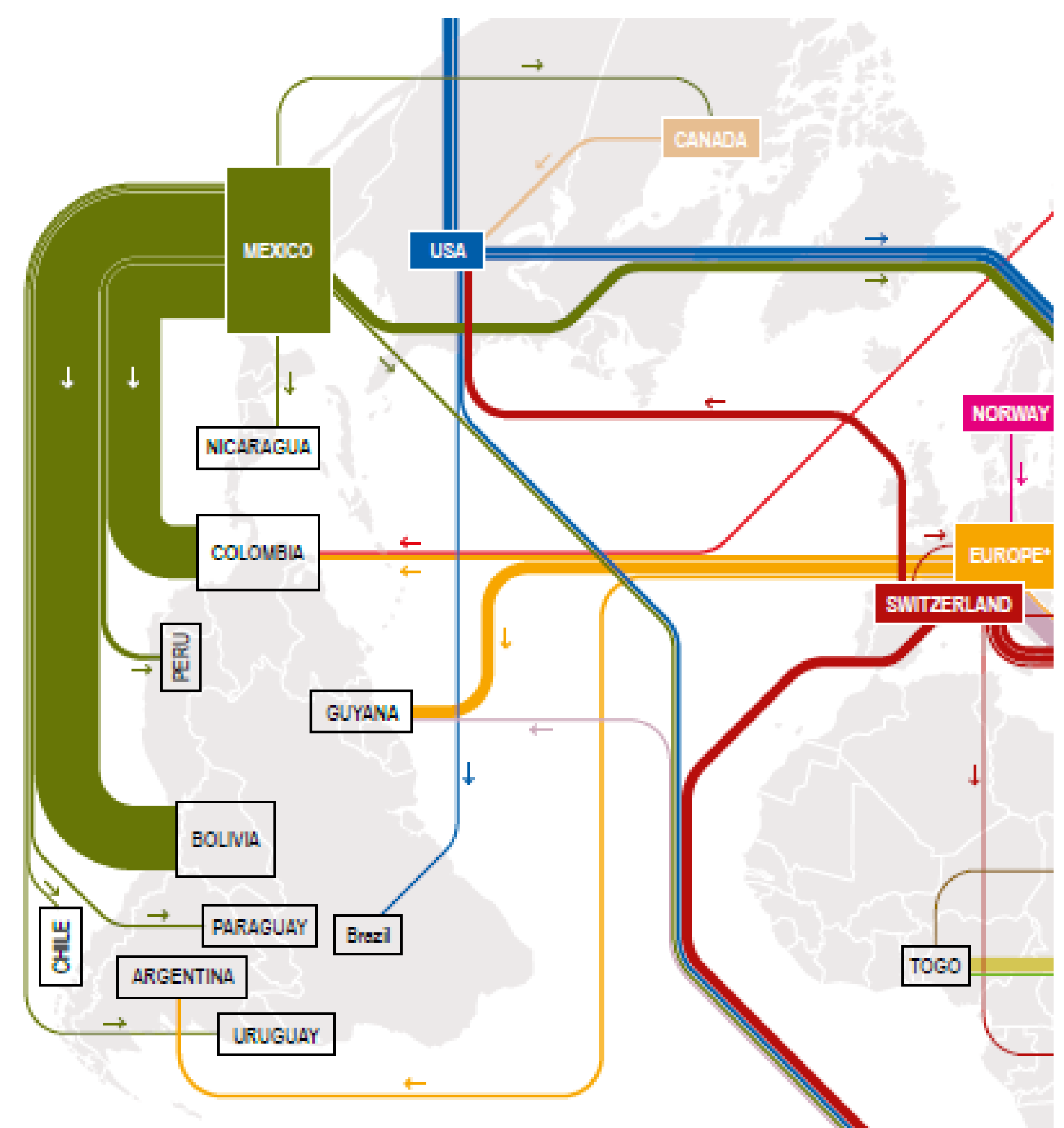
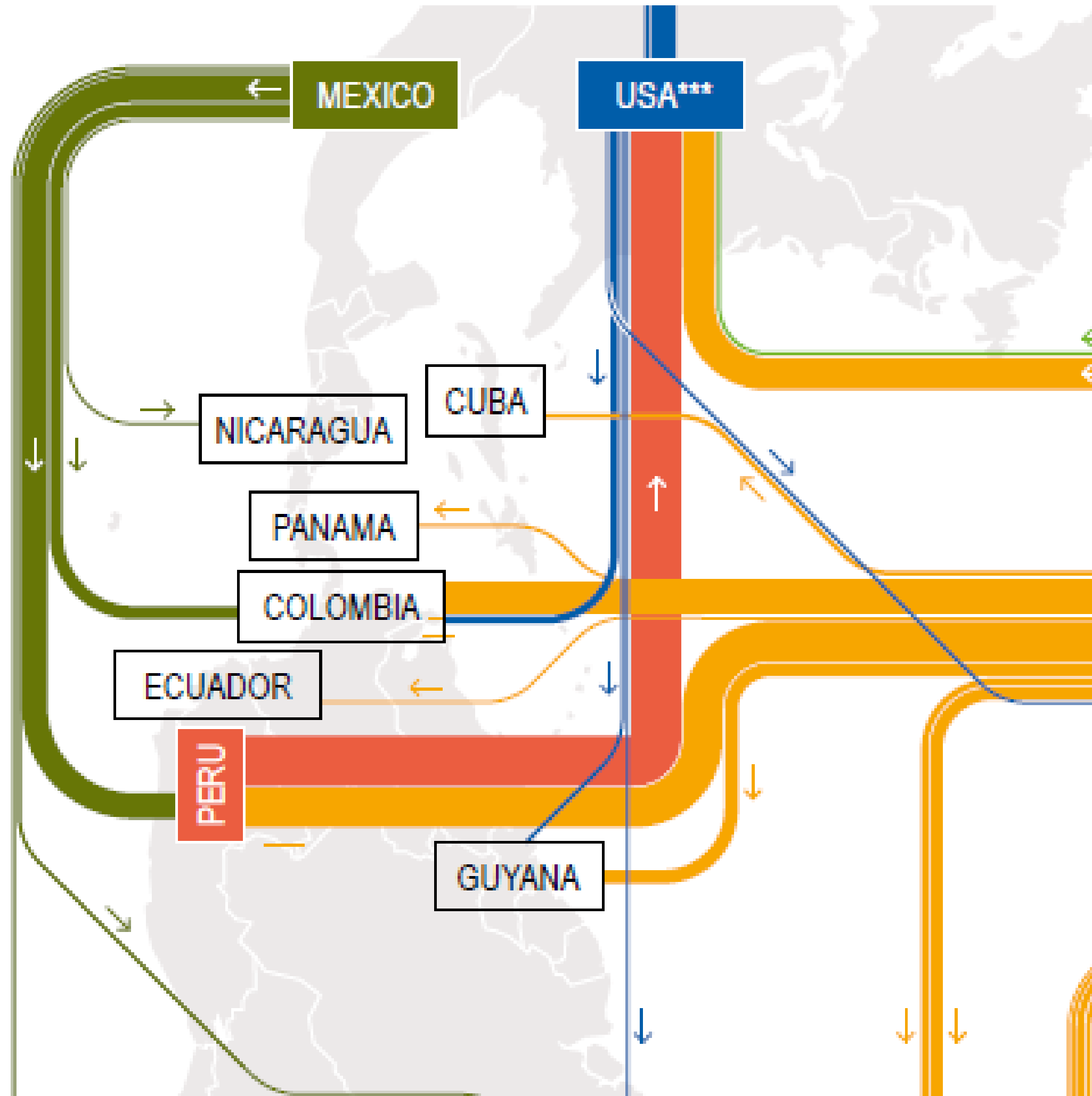
For more information on mercury, read the Science for Environment Policy In-Depth Report, [Tackling mercury pollution in the EU and worldwide.](#)







Note: Units (rounded) for the mercury pathways are in tonnes. They are means (averages) within varying ranges of uncertainty (not shown), depending on the pathway.





MAKE
MERCURY
HISTORY



Article 22

Effectiveness evaluation

1. The Conference of the Parties shall evaluate the effectiveness of this Convention, beginning no later than six years after the date of entry into force of the Convention and periodically thereafter at intervals to be decided by it.
2. To facilitate the evaluation, the Conference of the Parties shall, at its first meeting, initiate the establishment of arrangements for providing itself with comparable monitoring data on the presence and movement of mercury and mercury compounds in the environment as well as trends in levels of mercury and mercury compounds observed in biotic media and vulnerable populations.
3. The evaluation shall be conducted on the basis of available scientific, environmental, technical, financial and economic information, including:
 - (a) Reports and other monitoring information provided to the Conference of the Parties pursuant to paragraph 2;
 - (b) Reports submitted pursuant to Article 21;
 - (c) Information and recommendations provided pursuant to Article 15; and
 - (d) Reports and other relevant information on the operation of the financial assistance, technology transfer and capacity-building arrangements put in place under this Convention.

“The evaluation shall be conducted on the basis of available scientific, environmental, technical, financial and economic information.”

COP1 MC 1/9

COP2 MC 2/10





128 SIGNATORIES 115 RATIFICATIONS

CONFERENCE OF THE PARTIES - 3
25 - 29 November 2019
GENEVA - SWITZERLAND

RELATED

INTERSESSIONAL WORK AND
SUBMISSIONS FOR COP3

Follow @MinamataMEA

#MakeMercuryHistory

Ad-hoc Technical Expert Group on Effectiveness Evaluation

Pursuant Decision MC-2/10, the mandate of the ad-hoc technical expert group on effectiveness evaluation was revised, and the group was requested to further develop a report building on its report to COP-2 (UNEP/MC/COP.2/INF/8). The list of members and observers of the group is available below.



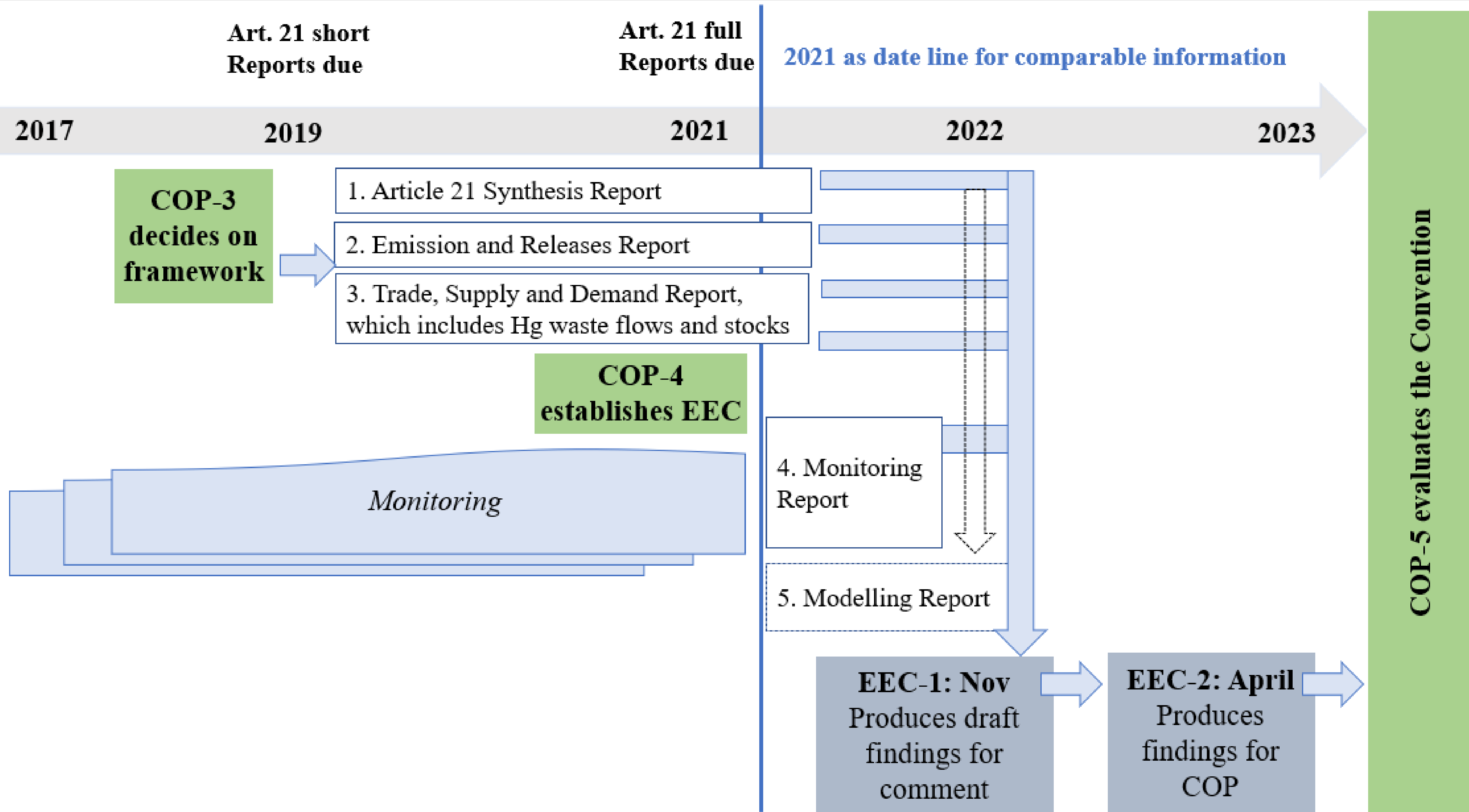


Diagram 3: Timeline - First Effectiveness Evaluation Cycle of the Minamata Convention runs from 2017 to 2023



Third meeting of the Conference of the Parties to the Minamata Convention on Mercury (COP3)

COP 3 Outcome

Arrangements for the first effectiveness evaluation of the Minamata Convention



MC-3/[]: Arrangements for the first effectiveness evaluation of the Minamata Convention on Mercury

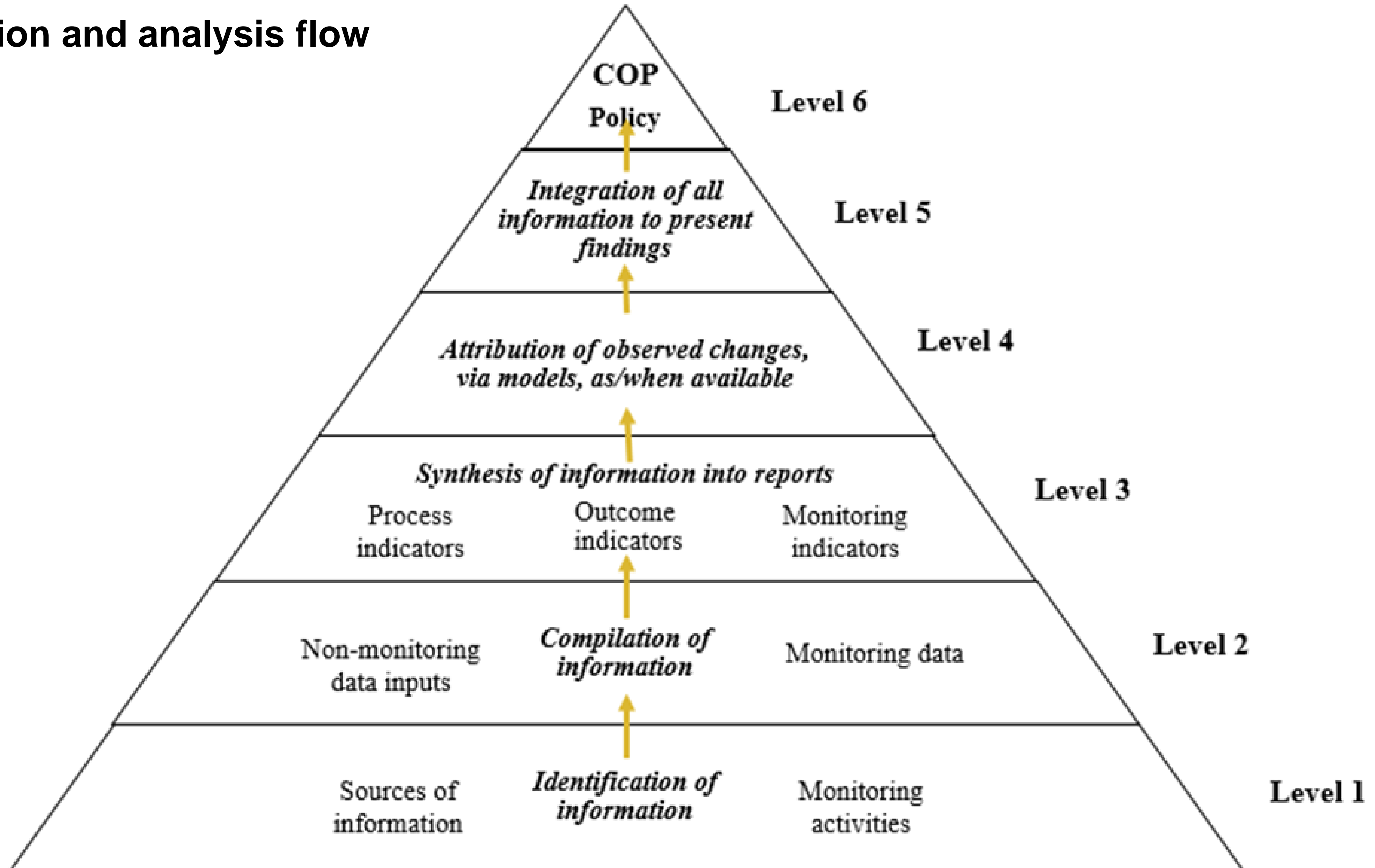
The Conference of the Parties,

Welcoming the report⁴ on the proposed framework for the effectiveness evaluation and monitoring arrangements under the Minamata Convention, and the complementing information developed by the ad hoc technical expert group on the basis of the mandates set out in decisions MC1/9 and MC-2/10,⁵

Recognizing the efforts to advance the work on the effectiveness evaluation at the third meeting of the Conference of the Parties,

1. Invites parties to submit views on the indicators in annex 1 to this decision and requests the Secretariat to compile those views in advance of the fourth meeting of the Conference of the Parties;
2. Requests the Secretariat to advance the work by securing services for drafting:
 - a) Guidance on monitoring to maintain harmonized, comparable information on mercury levels in the environment, taking into consideration the draft structure in UNEP/MC/COP.3/INF/15; and
 - b) Reports set out in the framework in annex 2 to this decision with the exception of the emissions and releases report, the monitoring report, and the modelling report.

Figure 1
Information and analysis flow



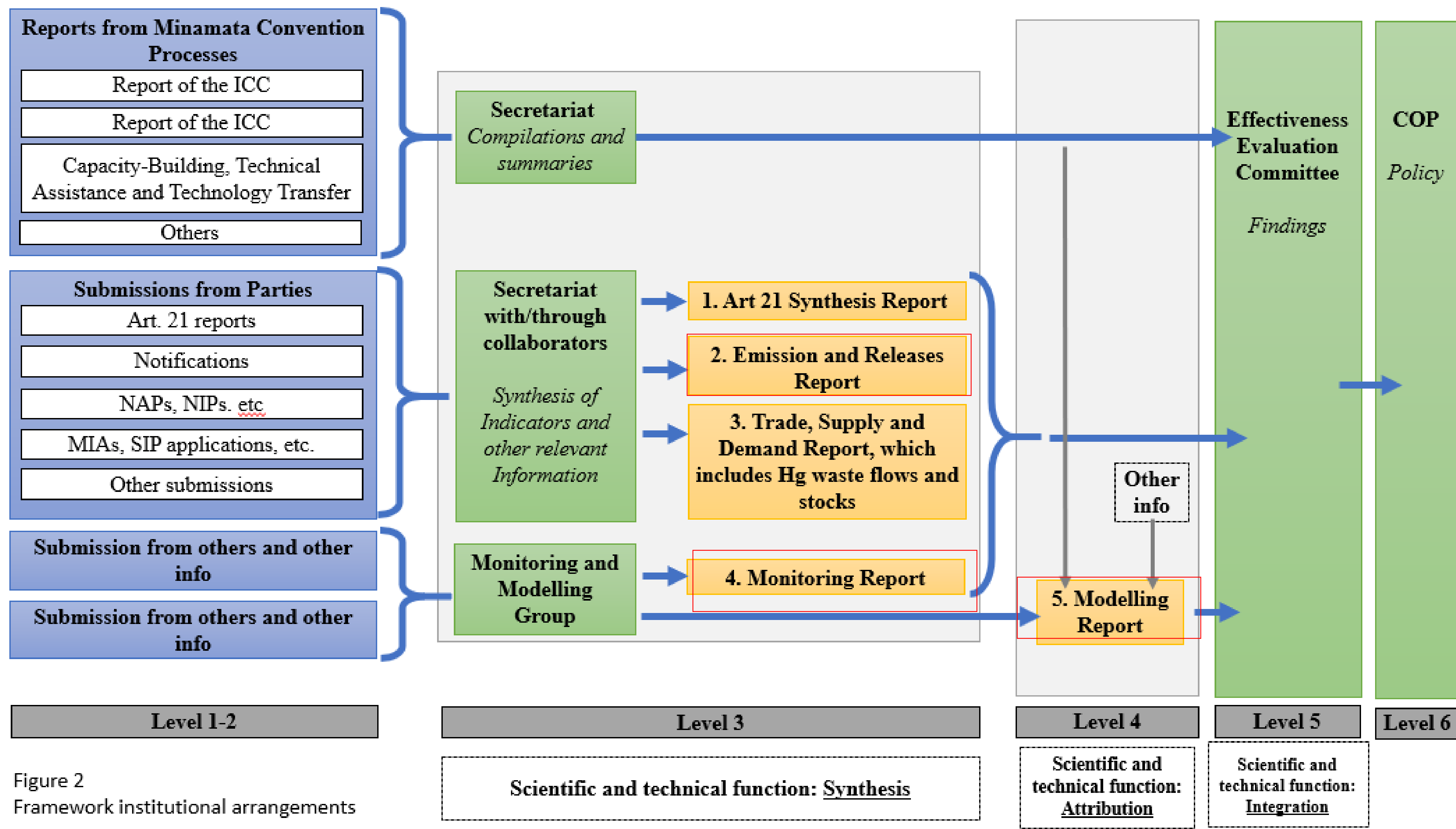
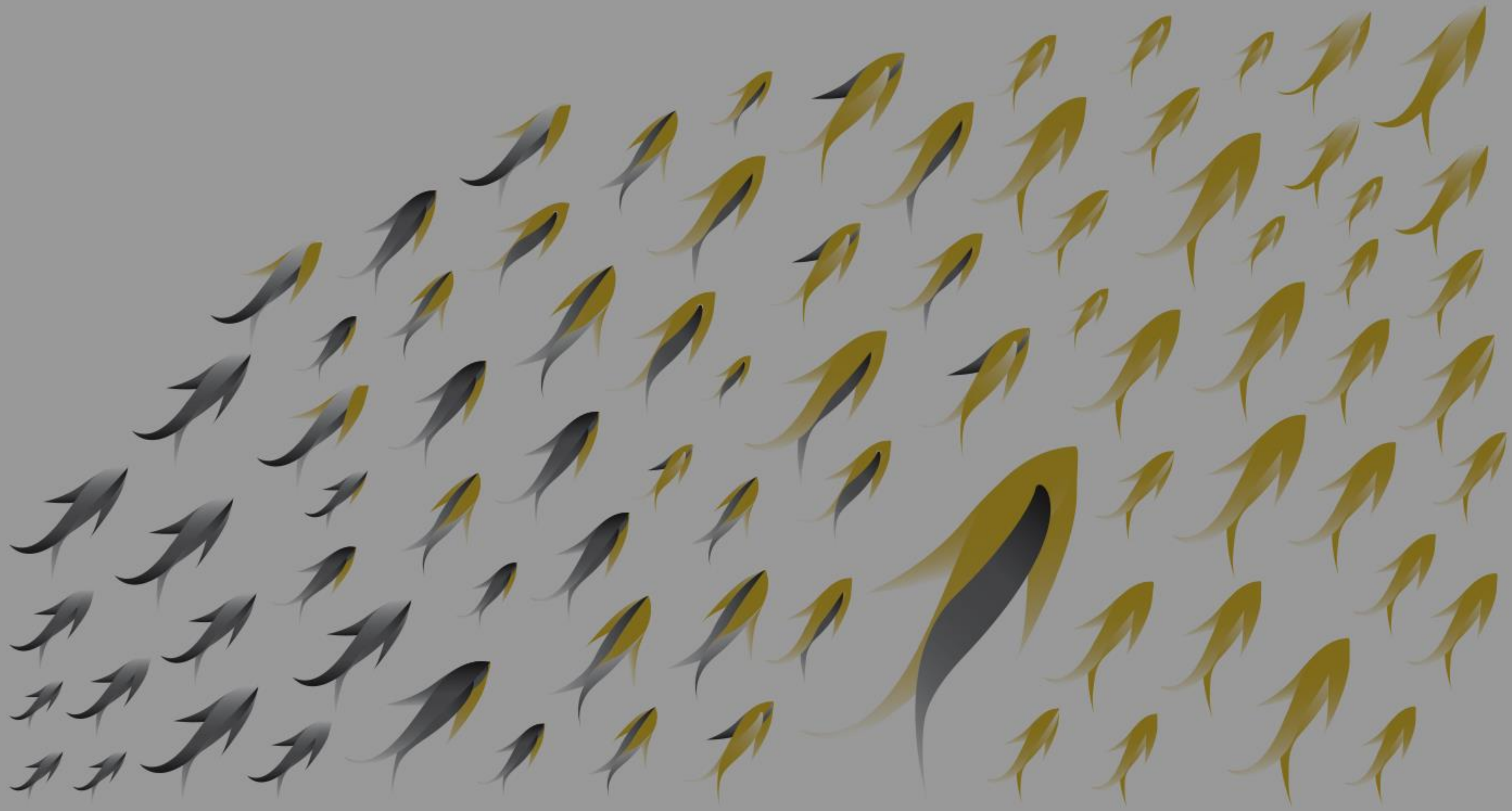


Figure 2
Framework institutional arrangements



MAKE MERCURY HISTORY