

# APPLICATION OF THE GOVERNANCE EFFECTIVENESS ASSESSMENT FRAMEWORK (GEAF) TO THE CLME+ SAP

Lucia Fanning and Robin Mahon  
Centre for Resource Management and Environmental Studies (CERMES)  
University of the West Indies, Cave Hill Campus

Technical Pre-Workshop to the 4th LBS STAC on Pollution-related activities in the  
Wider Caribbean Region (WCR)  
Panama, July 17, 2018



The CLME+ Project is using the  
*“Governance Effectiveness Assessment Framework”* (GEAF)  
for monitoring and evaluation of SAP implementation



Empowered lives.  
Resilient nations.



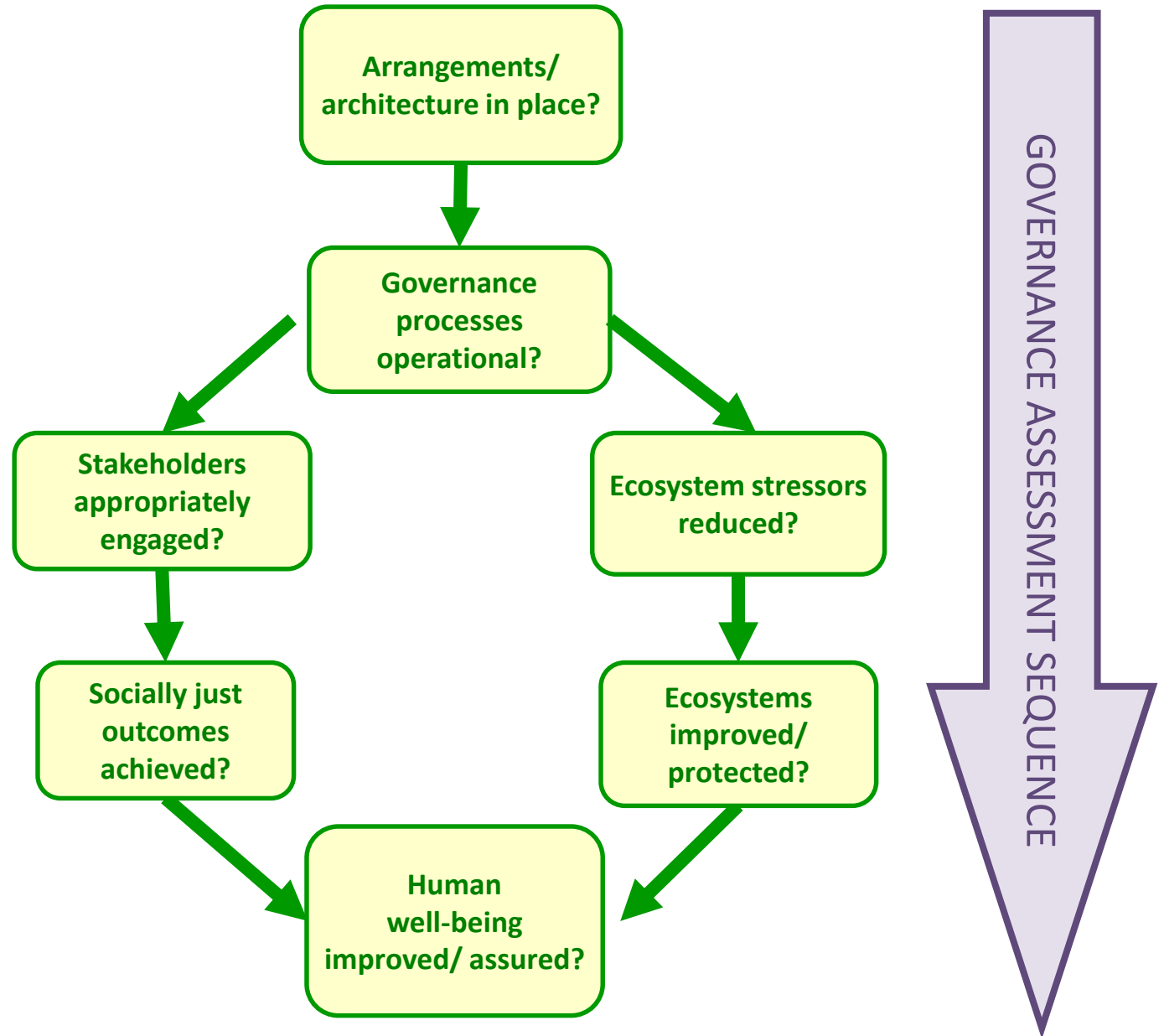
[www.theGEF.org](http://www.theGEF.org)



# The SAP GEAF indicators

Indicators to monitor SAP  
implementation at a strategic  
level

## GOVERNANCE EFFECTIVENESS ASSESSMENT FRAMEWORK





# GOVERNANCE EFFECTIVENESS ASSESSMENT FRAMEWORK IN THE CLME+ PROJECT

- Strategic level monitoring and evaluation tool to inform policy making at regional and subregional levels
- 5-year intervals
- Not a management tool
- Three sets of GEAF indicators
  - Fisheries
  - Pollution
  - Habitats and biodiversity



Empowered lives.  
Resilient nations.



[www.theGEF.org](http://www.theGEF.org)



## Number of indicators in each category, for each transboundary issue

Indicator category	Fisheries	Pollution	Habitat degradation	Total Regional
Governance architecture	3	3	3	9
Governance process	7	6	6	19
Ecosystem pressure	3	4	3	10
Ecosystem state	1	1	4	6
Stakeholder engagement	8	6	12	26
Social justice	8	3	2	13
Human well-being	7	4	4	15
<b>Total</b>	<b>37</b>	<b>27</b>	<b>34</b>	<b>98</b>

Minimum set of indicators to provide a clear view of progress

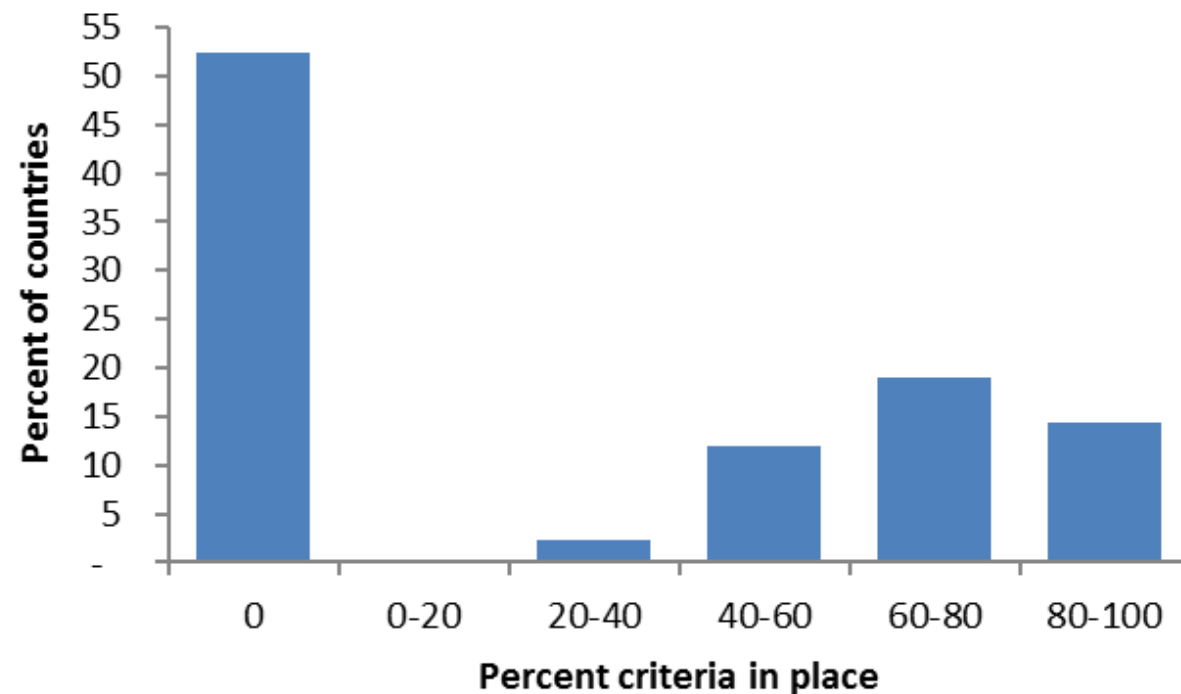


# ARCHITECTURE - NATIONAL INTERSECTORAL COMMITTEES

## Criteria for scoring

- Involve state actors
- Involve non-state actors (NGOs, CBOs and academia)
- Involve private sector
- Promote an enabling environment
- Have a clear mandate
- Document activities
- Regular review, evaluation, learning and adaptation
- Integrate sectors and actors at the national level
- Function as national - regional linkage

Percentage of countries in each level of NIC development



2017

## Good practice guidelines for successful National Intersectoral Coordinating Mechanisms (NICs)

S. COMPTON, P. McCONNAY, I. MONNEREAU, B. SIMMONS AND R. MAHON

CLME+ COMMUNICATION — CERMES Technical Report No. 88



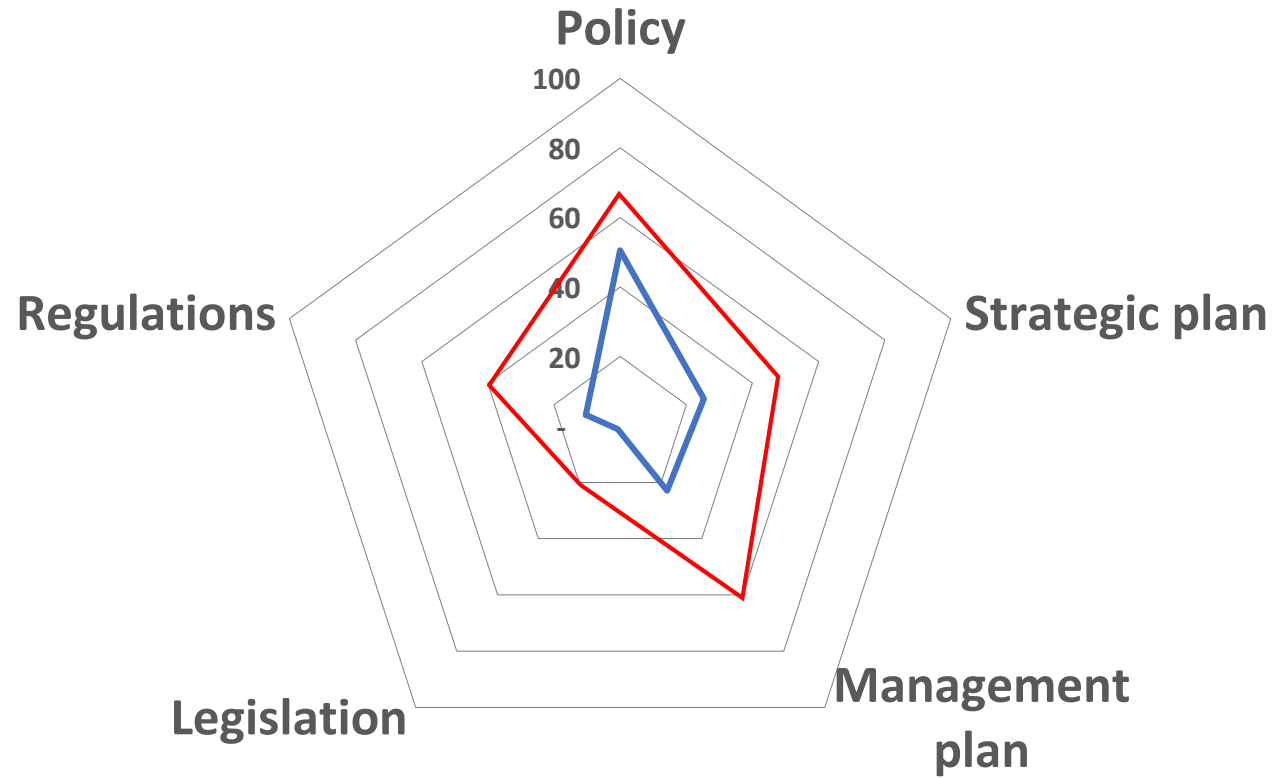
Empowered lives.  
Resilient nations.



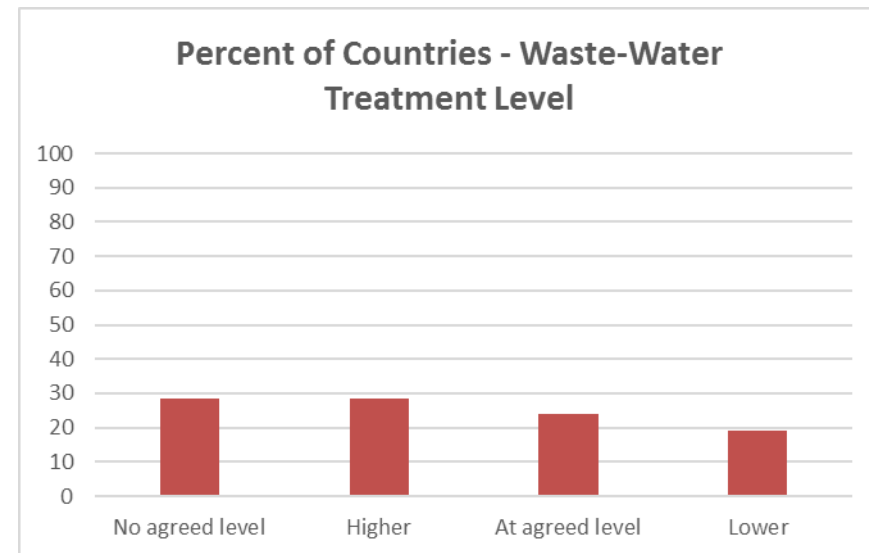
www.theGEF.org



## Percent of processes in place

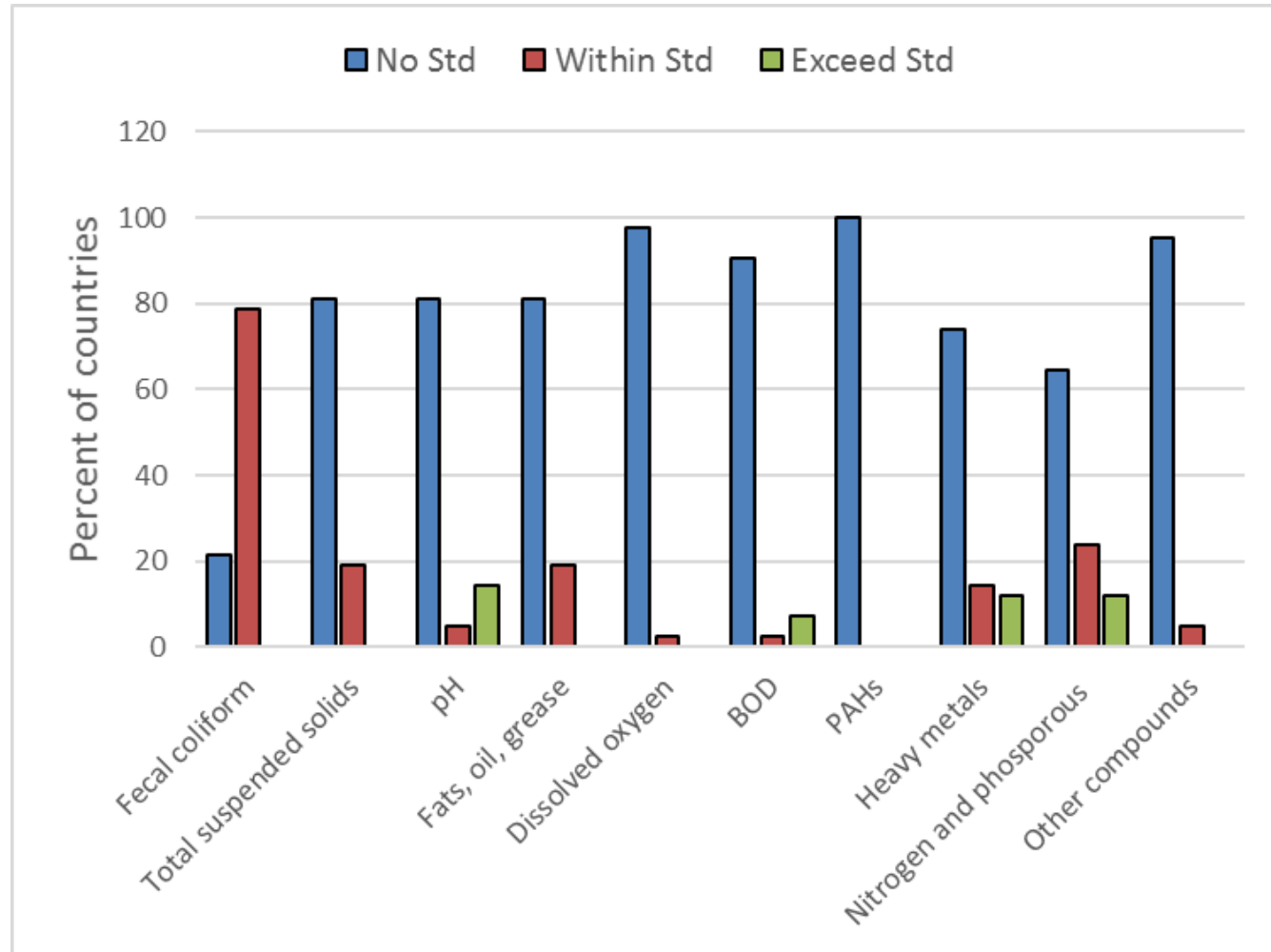


Level of achievement	Percent achievement by countries		
	P20. Waste water treatment at agreed level	P21 Solid waste treatment at agreed level	P22. Marine based sources of pollution at agreed level
0 - no agreed level	29	29	33
1 - treatment lower than agreed level	29	29	33
2 - at agreed level	24	38	17
3 - treatment higher than agreed level	19	5	17





## Pollutant levels in coastal waters





# POLLUTION - STAKEHOLDER ENGAGEMENT IN PROCESSES

F27. Countries participating in pollution processes

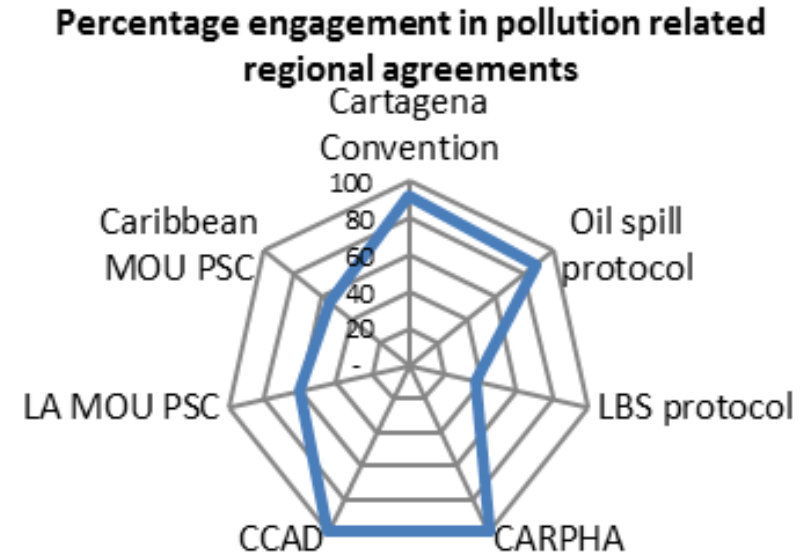
F28. Other regional IGOs engaged?

F29. Regional fisheries NGOs engaged?

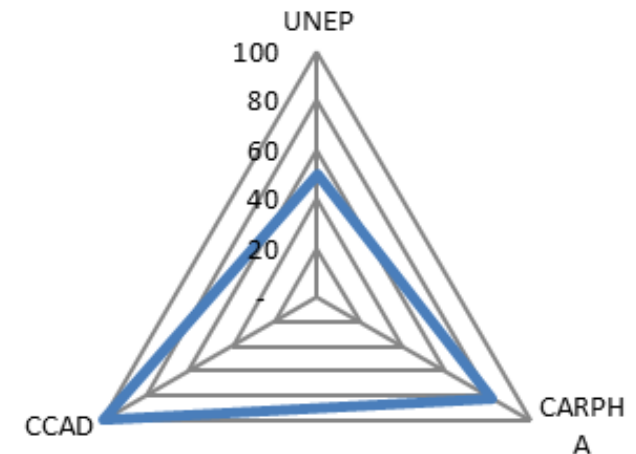
F30. IGOs participating in NGO processes?

F31. Regional private sector engaged?

F32. Regional environmental NGOs engaged?



Percent of eligible countries participating





# POLLUTION - SOCIAL JUSTICE

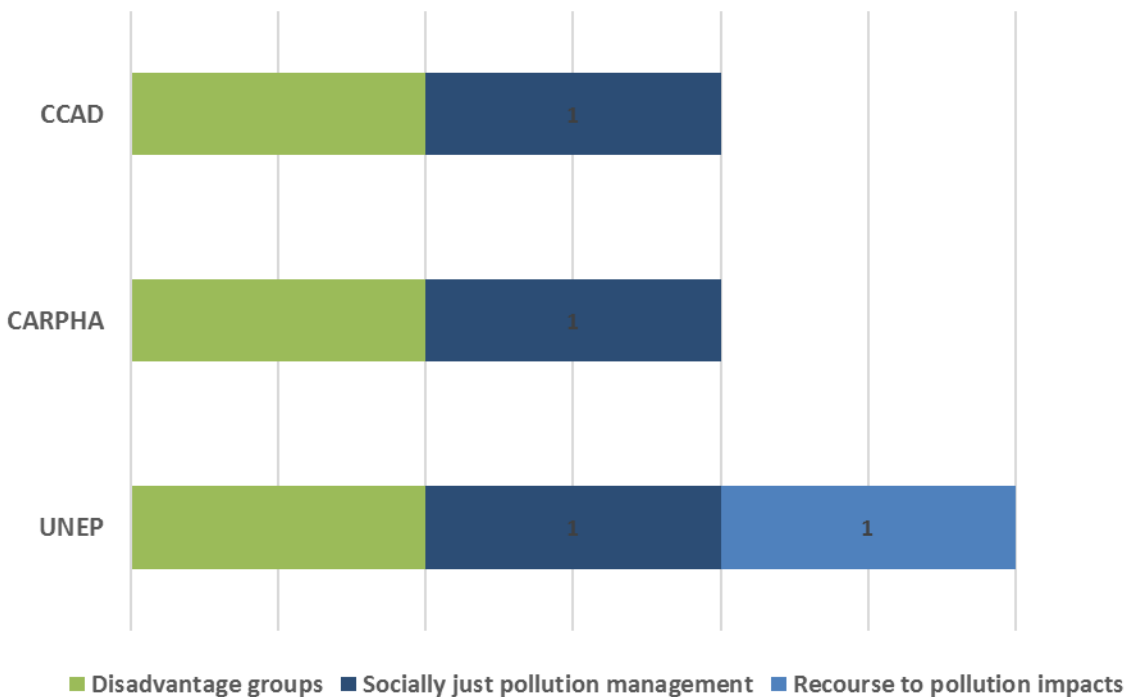
P.43 Social justice issues in regional agreements

P.44 National policies for disadvantaged groups?

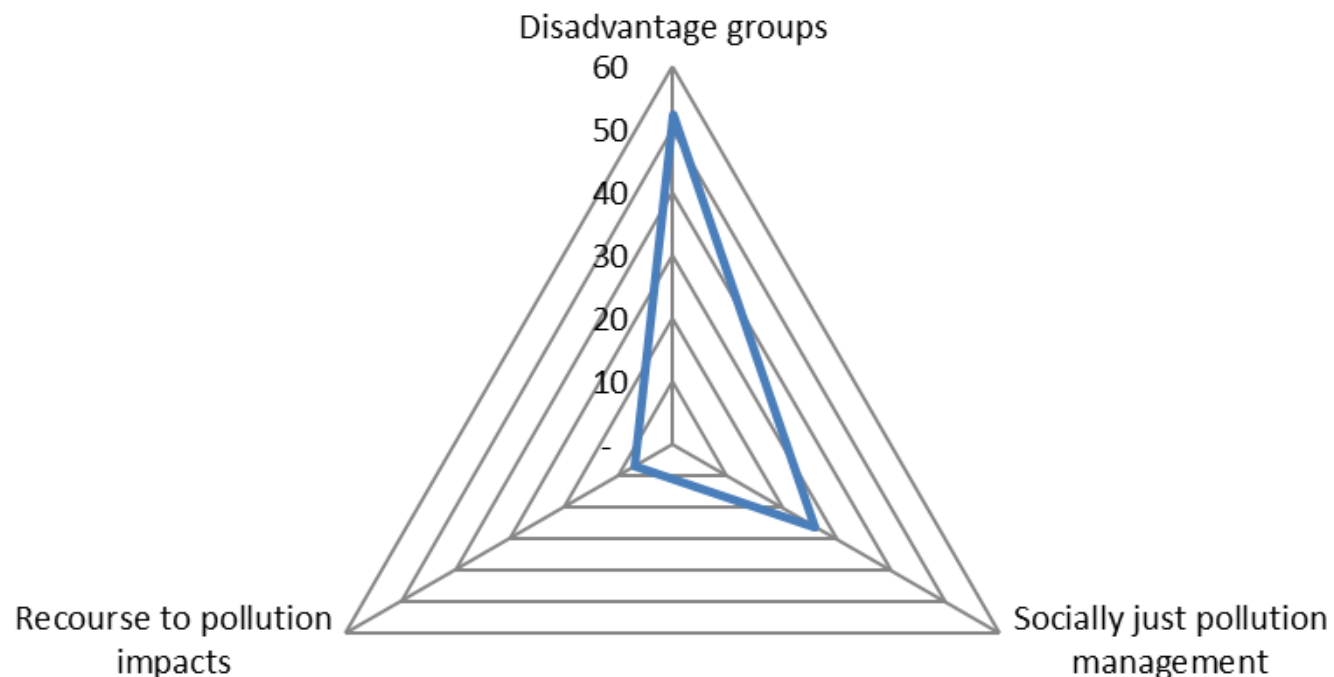
P.45 National measures to reduce pollution pressures socially just?

P.46 National measures allowing for recourse against pollution impacts?

Social justice issues addressed in regional agreements



Percent of countries with social justice policies



P.49 Human well-being reflected in regional arrangements

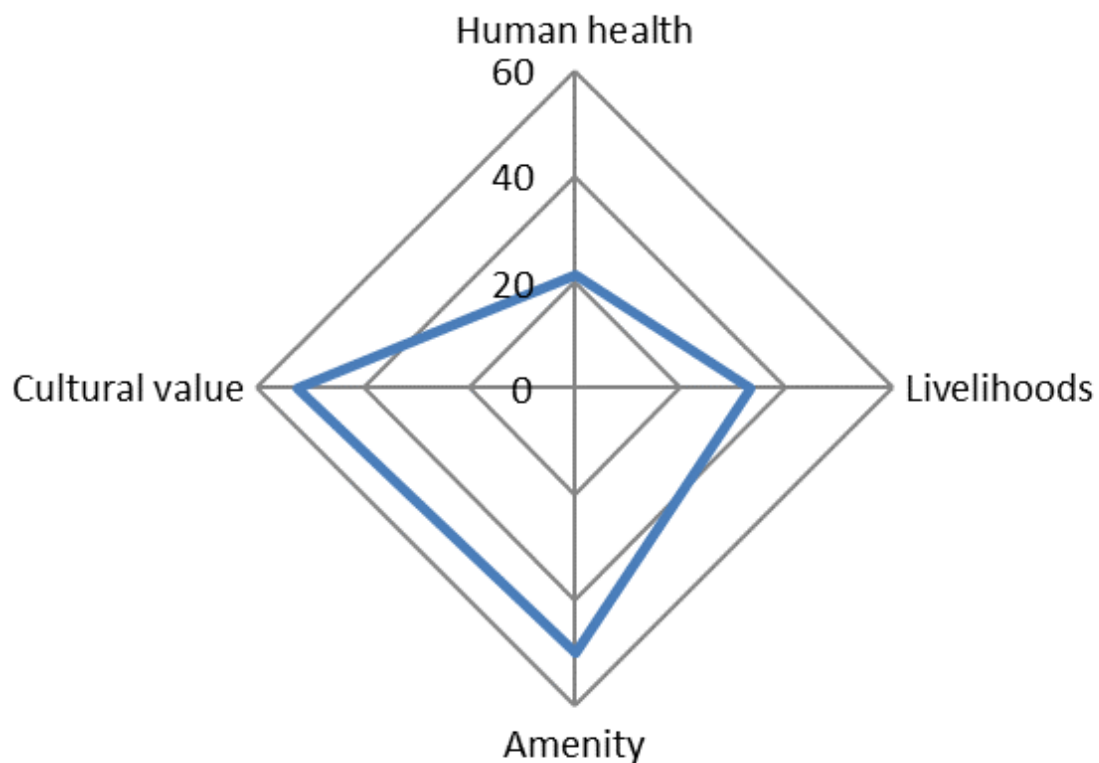
P.50 Efforts to control, prevent and reduce pollution benefitted human health?

P.51 Livelihoods increased/assured?

P.52 Increase in amenity use and access?

P.53 Loss of cultural/spiritual value reduced?

## Status of human well-being issues in countries



Interaction is ongoing with:

- Project Partners to determine data and information availability
- SOMEE Report to include GEAF indicators and supporting text.

THANK YOU