

TURNING WASTE INTO ENERGY

our journey since the Kasese district energy strategy

Presented at

The SWITCH Africa Green, regional sector meeting on integrated waste management, ACCRA, Ghana

11-12th June, 2019

by

Godfrey B.K Kabbyanga,

Mayor Kasese Municipality

Outline

1.
About Kasese

2.
Kasese district energy strategy and
waste management

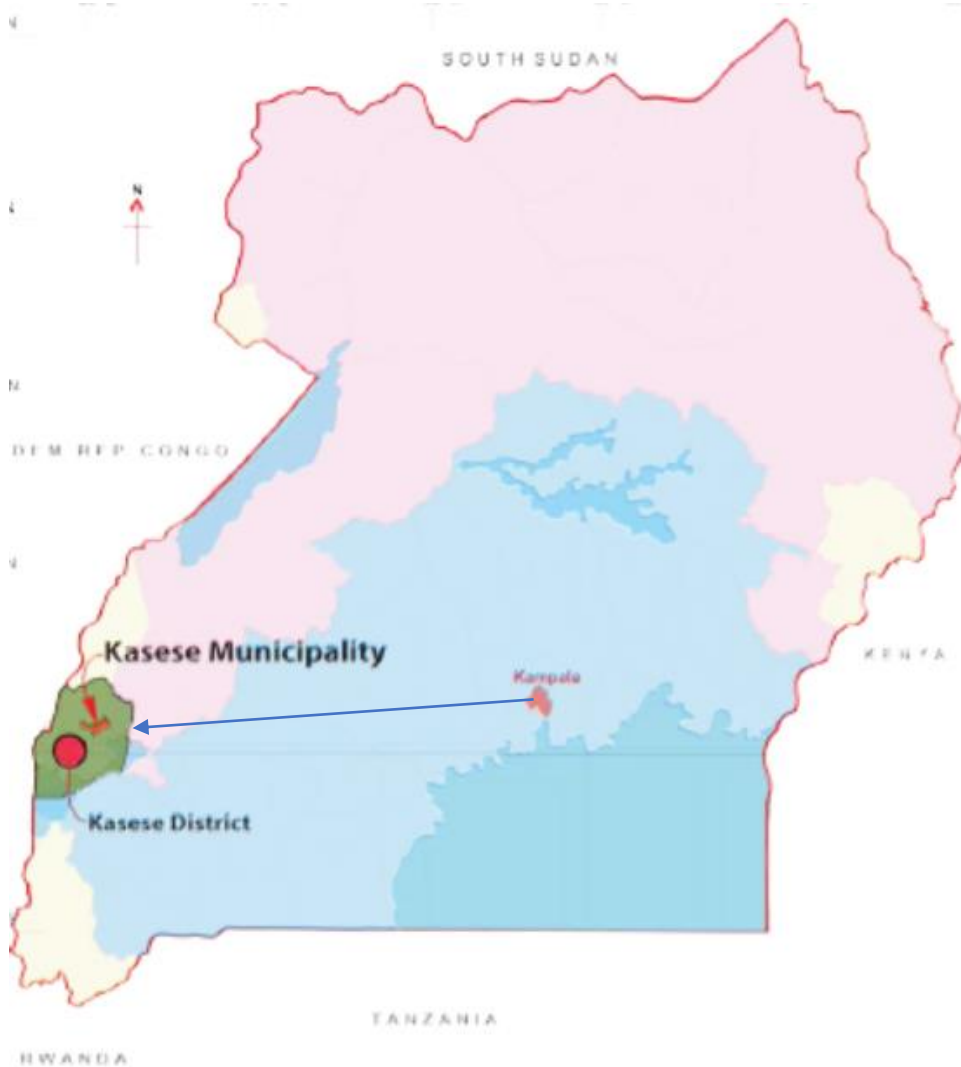
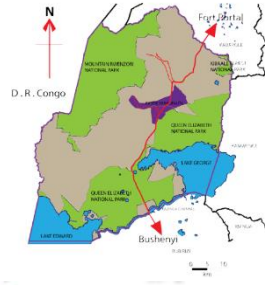
3.
Our policies to support
interventions

4.
Progress so far

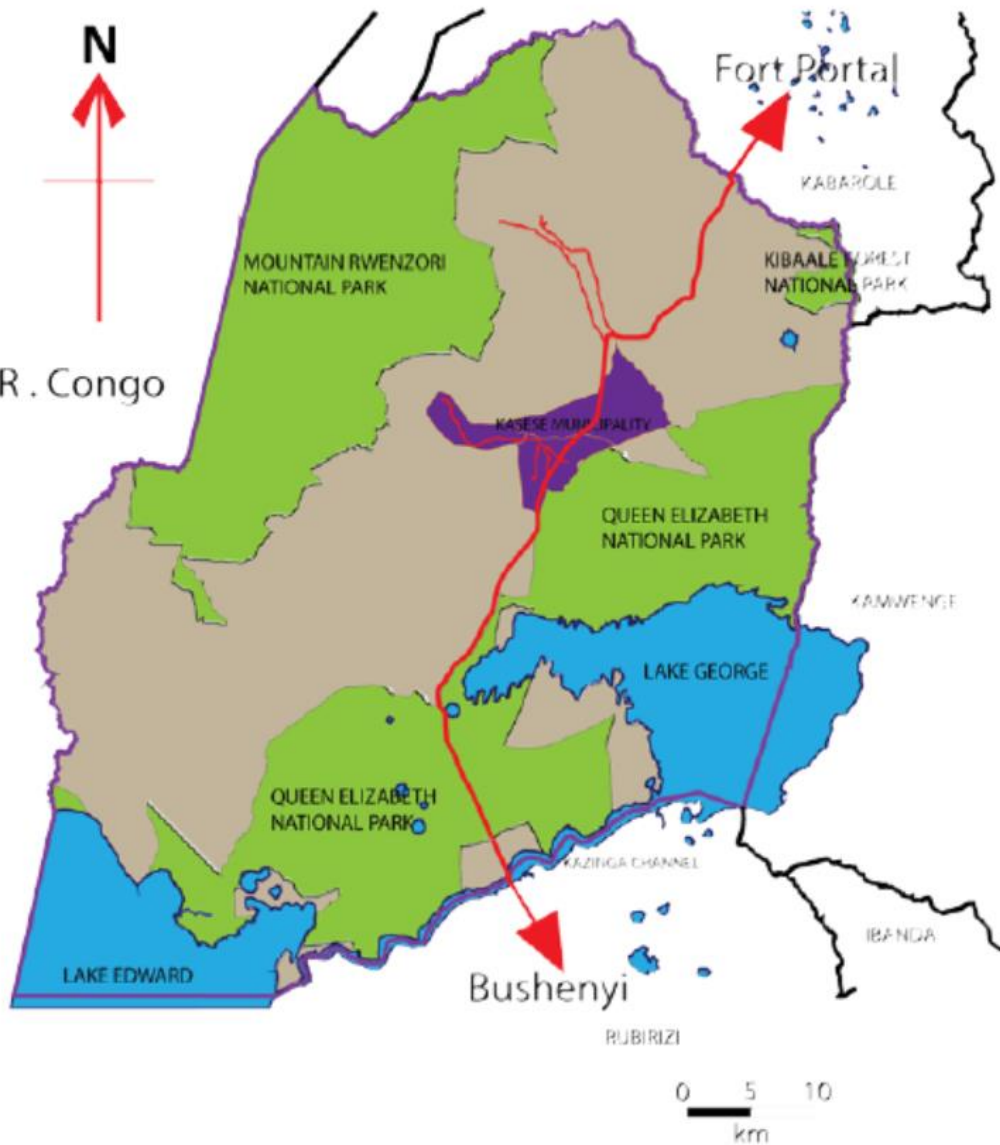
5.
Activities in Pipeline in COMSSA 3

6.
Challenges

Kasese



- 420km from Kampala
- located in Western Uganda and borders with other Districts of Rubirizi, Kamwenge, Bunyangabu and DRC Congo on Lubiriha side.
- Total area: 2724 km² dry land, 409km² open waters, 68.8km wetland and 1,683.4km protected area.
 - 174sqkm for Kasese Municipality.



Population: Approx. 747,800

- Popn density: 274.5

Grid access: Approx. 27%, Off Grid. 11%

Dependence on biomass: approx. 98%

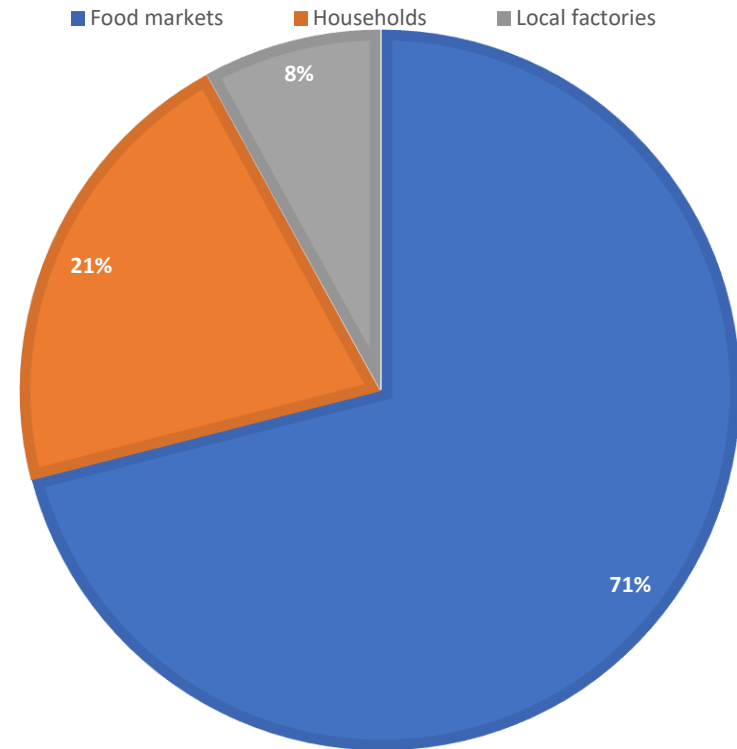
Dependence on Agriculture: more than 88%

% of total waste collected and disposed: less than 5% Mainly in Municipality.

Collected and disposed waste in the municipality.

- 50 – 70 tons collected and disposed off daily

MUNICIPAL WASTE



The Opportunity

95% uncollected waste, especially in farms and other households.

Outline

1.
About Kasese

2.
Kasese district energy
strategy and waste
management

3.
Our policies to support
interventions

4.
Progress so far

5.
Activities in Pipeline in
COMSSA 3

6.
Challenges

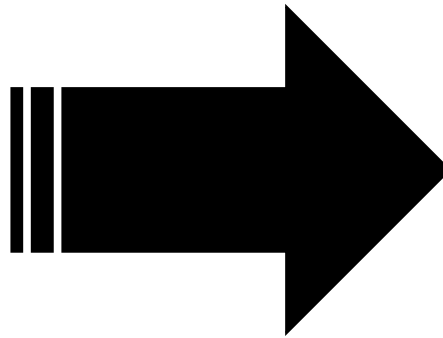
The Kasese district Energy strategy Journey

2012

signed a commitment with WWF- UCO to ensure **100% access** to clean energy services for all domestic, productive and social needs in the district **by 2020**.

Conducted an Energy Access Baseline Study to determine the energy situation in households, Small and Medium scale Enterprises (SME) and Industries

Launched the Clean Energy Champion District initiative.



2013

May: Kasese Municipality signed an MoU with **Aalborg Municipality and Frederikshavn Municipality-May 2013**.

✓ **A commitment to transform Kasese municipality into a “clean, green and poverty free municipality”**

June: Kasese Municipality approved and adopted the **District Renewable Energy Strategy**

✓ **With a goal: Increase the availability and usage of affordable clean renewable energy technologies**

Key mapped areas of waste to energy in strategy

Target sector	Conversion	Renewable energy choice	use
Farming Households	Livestock & household sewage waste	Biogas	Cooking and lighting
Municipal solid waste	Household solid waste	Briquettes	Cooking
Public institutions (Schools, prisons)	Human waste	Biogas	Cooking and lighting
Community	Municipal solid waste	Briquettes	Cooking and heating
Municipal abotoir	Livestock waste	Biogas	Lighting
Municipal public toilets	Human waste	Biogas	Lighting

Outline

1.
About Kasese

2.
Kasese district energy
strategy and waste
management

3.
Our policies to support
interventions

4.
Progress so far

5.
Activities in Pipeline in
COMSSA 3

6.
Challenges

- Prioritisation of partnership arrangements aligned with interventions.
- Mainstreaming of intervention in new and ongoing government programs especially sensitization.
- Local tax waivers for businesses in waste to energy technologies.
- Policy to lineup public VIP toilets, create an inspection chamber and provide an escape for the gas.

Outline

1.
About Kasese

2.
Kasese district energy
strategy and waste
management

3.
Our policies to support
interventions

4.
Progress so far

5.
Activities in Pipeline in
COMSSA 3

6.
Challenges

- Built capacities for 44 local Community Based Organizations (CBOs) to provide clean energy solutions.
- 6 local CBOs were also supported through PPP.
- LL Govt CDOs (28) trained to integrate clean energy interventions into their operational plans.
- Over 80 community groups have been trained in briquette making under PPP.



Household biogas plants.

Target group: Farming households in the peri urban areas of the municipality.

Main waste product: Livestock dung



- 15 biogas plants installed in 2015
- 6 still operational



Promotion of community briquette group making

4 local CSO engaged in promotion of Briquettes.

16 women groups trained in briquette making through PPP.



Outline

1.
About Kasese

2.
Kasese district energy
strategy and waste
management

3.
Our policies to support
interventions

4.
Progress so far

5.
Activities in Pipeline in
COMSSA 3

6.
Challenges

- A bio waste inventory potential especially targeting abattoir and food markets - data to drive investment
- Identification, recognition and rewarding community groups engaged in waste to energy.
- Piloting a model for waste sorting at source to improve processing.

Outline

1.
About Kasese

2.
Kasese district energy
strategy and waste
management

3.
Our policies to support
interventions

4.
Progress so far

5.
Activities in Pipeline in
COMSSA 3

6.
Challenges

Proposed solutions

High investment cost

Creating subsidies in form of tax waivers or grants to reduce investment costs.

Poor disposal methods

Improve waste collection and disposal. Prioritize sorting at source. Consider privatizing waste management.

Limiting cultural beliefs especially to biogas from faeces

Massive sensitization focusing on driving behavioral change

Small local market for recycled products

Provide tax incentives for companies in recycling, Massive promotion of recycled and waste to energy products e.g briquettes.

High Bank interest rates

Government led negotiations with Commercial Banks on low interest Loans for roof top solar panels

Waste management and energy access remains the most important challenge urban authorities in Africa face today and conversion of waste to energy is perfect solution to it.

THANK YOU