

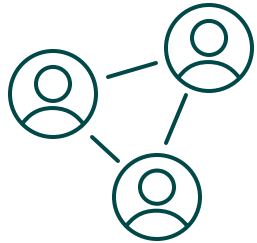
Introducing the **Alliance to End Plastic Waste**

Forum on the Multi-stakeholder Platform
on Marine Litter and Microplastics

July 13, 2021

The global plastic waste problem demands bold ambition

The Alliance translates commitment into action



Key principles guiding the Alliance

1. **Act now...** or risk lasting damage for future generations
2. **Collective action...** no organisation can tackle this alone
3. **Cross-value chain approach...** no single business sector can bring true system change
4. **A do-tank, not a think-tank...** discussion, policy, and public pledges are good, but we need real solutions and real investment

Convening stakeholders to advance real solutions to plastic waste:

- More than **60 companies** from across the plastics value chain
- **5 Supporters** contributing resources and capability
- A network of **10** like minded **Strategic Allies** committed to the cause

Four strategic pillars...



Infrastructure



Innovation



Education & Engagement



Cleanup

The Alliance has more than 30 projects underway addressing gaps in plastic waste management and circularity

Investment Themes...



Engaging with cities



Creating value for recyclates



Advanced recovery & recycling



Design for circularity



Societal behaviour



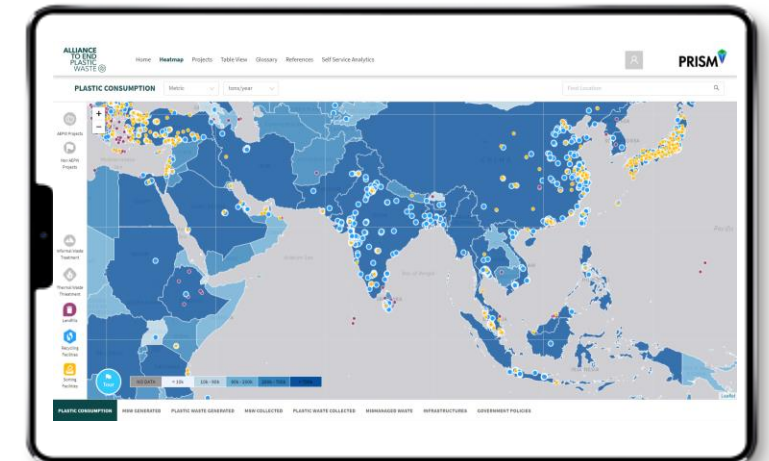
Plastic Recovery Insight & Steering Model (PRISM)

A project convening partners and information to address the **plastic waste data gap**

A global open-source platform to **centralize and harmonize** plastic waste information, to **close the knowledge and data gap** across academia, industry, civil society, and policy-makers

- Systematic harmonisation and aggregation of data from disparate sources co-created with IBM Services in Singapore
- Global engagement and collaboration to align methodologies and standards/ definitions (e.g. IUCN/UNEP hotspot methodology)
- A key tool for any stakeholder active in addressing the plastic waste challenge, with sources collated from across the plastic and plastic waste value chain
- Envisaged robust independent governance process
- Access for all user groups including data providers, data verifiers and data users

PRISM 



- Municipal Solid Waste
- Plastic Waste
- Mismanaged Waste
- Infrastructure Types
- Volumes Generated & Collected
- Polymer Types
- Policies

**ALLIANCE
TO END
PLASTIC
WASTE** 

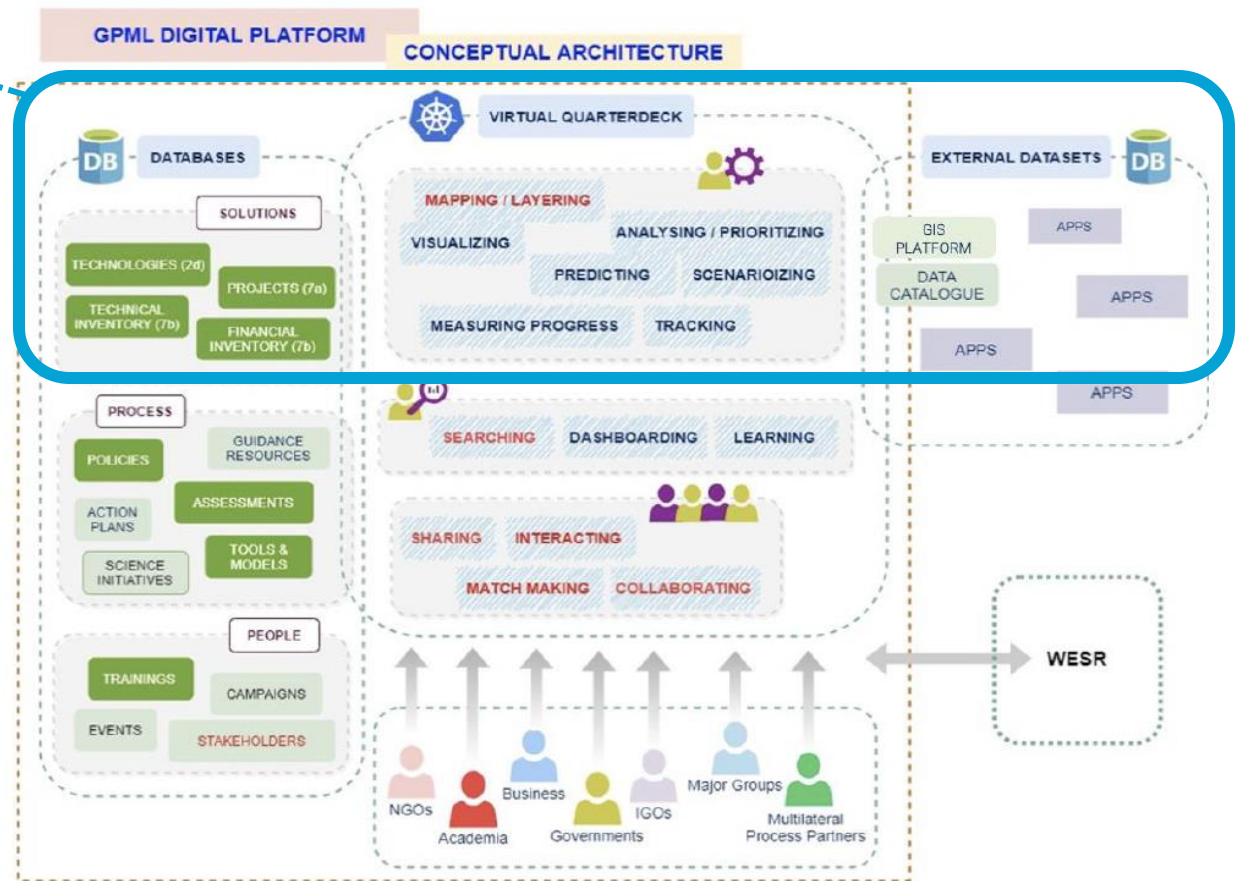
IBM

PRISM could form a component of GPML Digital Platform

Aggregated database and interface to meet needs of the GPML “Virtual Quarterdeck”

PRISM provides functionality to support several elements of the GPML conceptual architecture

- Database of **aggregated and processed data from multitude of sources**
 - More than 500 open-access sources processed to date
- **Mapping and visualising** multiple data sets, available via heatmaps and tables
- **Analytic tools** as basis for predictive **modelling** and **scenario development**
- **Connectivity to external datasets** to facilitate easy and structured data ingestion (APIs)
- Easily adaptable to the **Marine Litter and Plastic Pollution Ontology** being developed by UNEP GPML



Source: Concept Document, Global Partnership on Marine Litter Digital Platform, Draft external document for user and partner consultations, UNEP GPML Secretariat (by email 8 July 2021)

**ALLIANCE
TO END
PLASTIC
WASTE** 

**THANK
YOU!**