



---

Preparations for the special session on the commemoration of the creation of the United Nations Environment Programme (UNEP@50)  
Presentation of the Concept Note: A World Environment Situation Room (WESR)

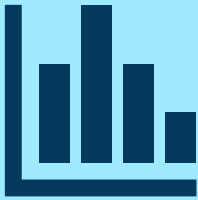
Committee of Permanent Representatives  
Subcommittee Meeting, 23 November 2021



- An **enhanced World Environment Situation Room (WESR)** – working with GRID Centre’s Network, collaborating centres and UN system, private sector, academy, and other partners.



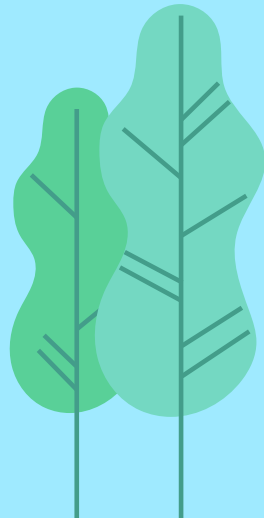
- Strengthened HQ in Nairobi – to **facilitate a UNEP federated data, information and knowledge platform, a distributed system** across UNEP and its partners.



- **Stronger, more timely and better-quality support to countries (SDGs, MEAs, SoE, NDP, CCAs, ...).**



- Supported by the **competence and skills of qualified staff**, and associated **infrastructure, contents, and services.**

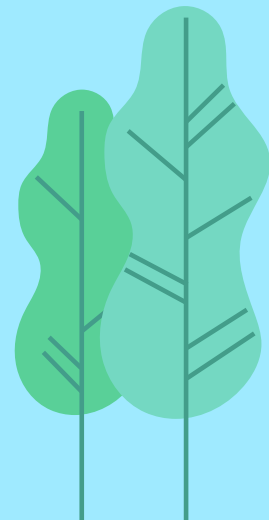
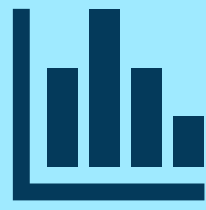
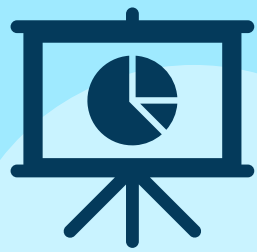




- Building on the efforts to set-up the WESR over the last few years, **the enhanced WESR will focus on four primary goals:** supporting Member States in their needs for Environmental Data for Policy and Action; enhancing the science-policy interface; providing the data backbone to support scientific assessments (including GEO); building on a partnership model to enhance UNEP's facilitation or convening role.



- **Demand-driven and human-centered** approach to develop the WESR. There are **5 primary targeted audiences identified:** Policy Makers and Member States; Scientific Community; International Organizations and processes; Business and Innovators; and Citizens and Civil Society.

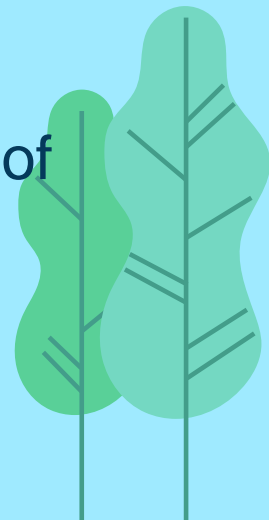
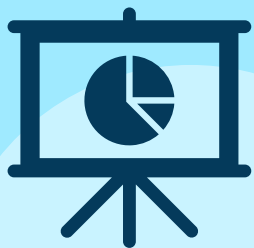
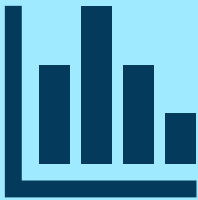




- **WESR development will be undertaken in three phases**, each of which is scalable based on available funding:
  - **Phase 1 (2021 - 2023)**: Setting the foundation.
  - **Phase 2 (2024 - 2025)**: Increased uptake, engagement, and capacity development.
  - **Phase 3 (2026 - 2030)**: A network of users, data, applications, and knowledge.

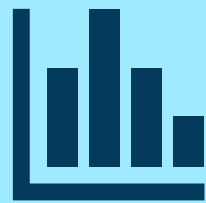
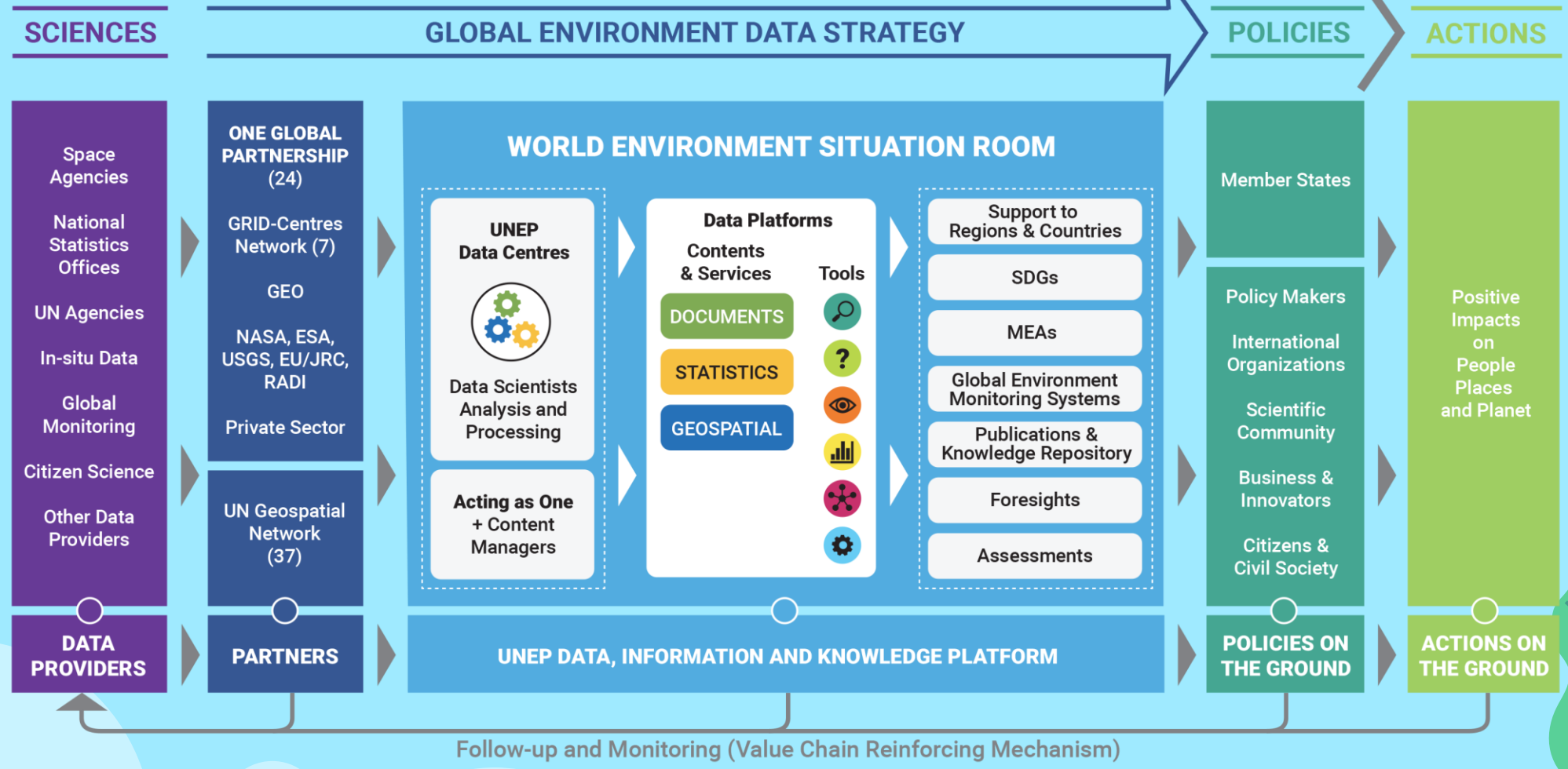


- **An evolving Data platform:** <https://data.unep.org>
- a Concept diagram **explaining Global Environmental Data Strategy (GEDS) and WESR** inter-relations is provided in Annex II of the Concept note (and in the next page).



# Implementation of the World Environment Situation Room (WESR)

## A World Environment Situation Room (WESR) implementing GEDS



Thank you!

