

Plastics INC Webinar 2: ~~Science~~ **Best available knowledge** informing decision- making



Indigenous Knowledge and International Policies
Sara Olsvig, Chair, Inuit Circumpolar Council

INUIT NUNAAAT INUIT HOMELAND

ICC
CHUKOTKA

ICC
ALASKA

ICC
GREENLAND

ICC
CANADA



Equitable and Ethical Engagement

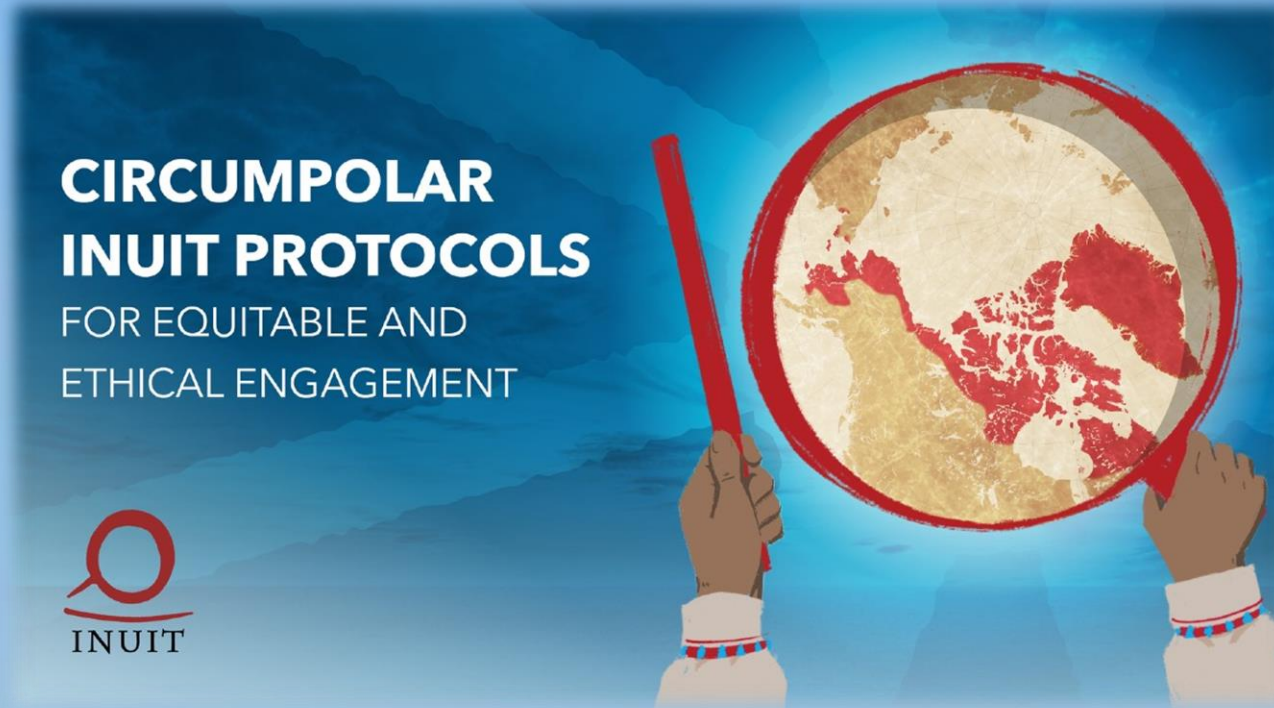
**‘Nothing About Us
Without Us’ –
Always Engage
with Inuit**

**Communication
with Intent**

**Information, Data
Sharing, Ownership
and Permissions**

CIRCUMPOLAR INUIT PROTOCOLS

FOR EQUITABLE AND
ETHICAL ENGAGEMENT



**Recognize
Indigenous
Knowledge in its
Own Right**

**Exercising
Accountability -
Building Trust**

**Practice Good
Governance**

**Building Meaningful
Partnerships**

**Equitably Fund Inuit
Representation and
Knowledge**



INDIGENOUS KNOWLEDGE

“Indigenous Knowledge is a systematic way of thinking applied to phenomena across biological, physical, cultural, and spiritual systems. It includes insights based on evidence acquired through direct and long-term experiences and extensive and multigenerational observations, lessons, and skills. It has developed over millennia and is still developing in a living process, including knowledge acquired today and in the future, and it is passed on from generation to generation.”

CIRCUMPOLAR INUIT PROTOCOLS FOR EQUITABLE AND ETHICAL ENGAGEMENT:
<https://www.inuitcircumpolar.com/project/circumpolar-inuit-protocols-for-equitable-and-ethical-engagement/>

Contamination entering the Arctic

- Arctic is already impacted by stressors like climate change and pollution
- Chemicals undergoing long-range transport, are persistent, bioaccumulate, biomagnify, having adverse health effects
- Contaminants don't respect borders
- Plastics adding to that threat, making it into the Arctic



Photo by Jed Crosby

Global regulation – why needed?

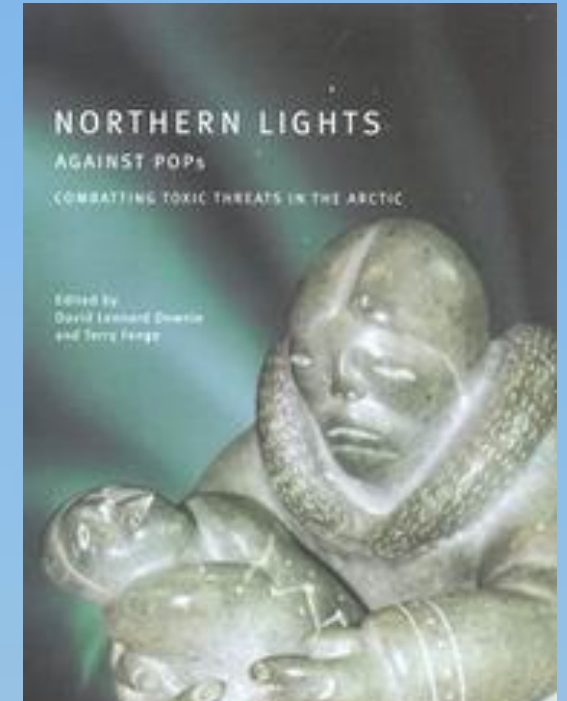


<https://www.istockphoto.com/illustrations/turn-off>



Examples of Global Governance

- ICC was part of negotiation/impacted and/or is active in:
 - Stockholm Convention on Persistent Organic Pollutants
 - Minamata Convention on Mercury
 - UNFCCC
 - International Agreement to Prevent Unregulated High Seas Fisheries in the Central Arctic Ocean
 - IMO
 - Convention of Biological Diversity
 - IPCC

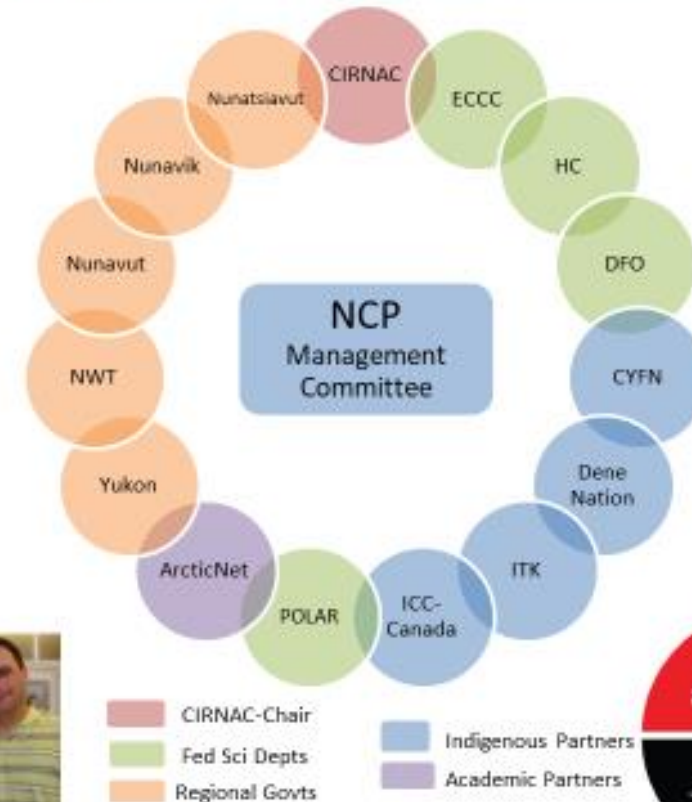


Good examples

NCP Partnerships and Indigenous Engagement

Indigenous partnerships exist throughout NCP's governance structures, projects and activities

- Indigenous peoples must be included as partners at every step of the research process:
 - Priority-setting ✓
 - Project design & leadership ✓
 - Proposal review & funding decision-making ✓
 - Project implementation ✓
 - Results interpretation, authorship in publications ✓
 - Knowledge translation and results communication – local, national, international ✓



Avoid tokenism and fear-based communication

Community-based monitoring should only be done when in line with community-driven research priorities, and monitoring on this topic should be done with extreme care so as to not unnecessarily deter communities from subsisting on traditional foods because of a fear-based approach.



FOOD SOVEREIGNTY AND SELF-GOVERNANCE:
INUIT ROLE IN MANAGING ARCTIC MARINE RESOURCES:

https://hh30e7.p3cdn1.secureserver.net/wp-content/uploads/20200914-FSSG-Report_LR-1.pdf

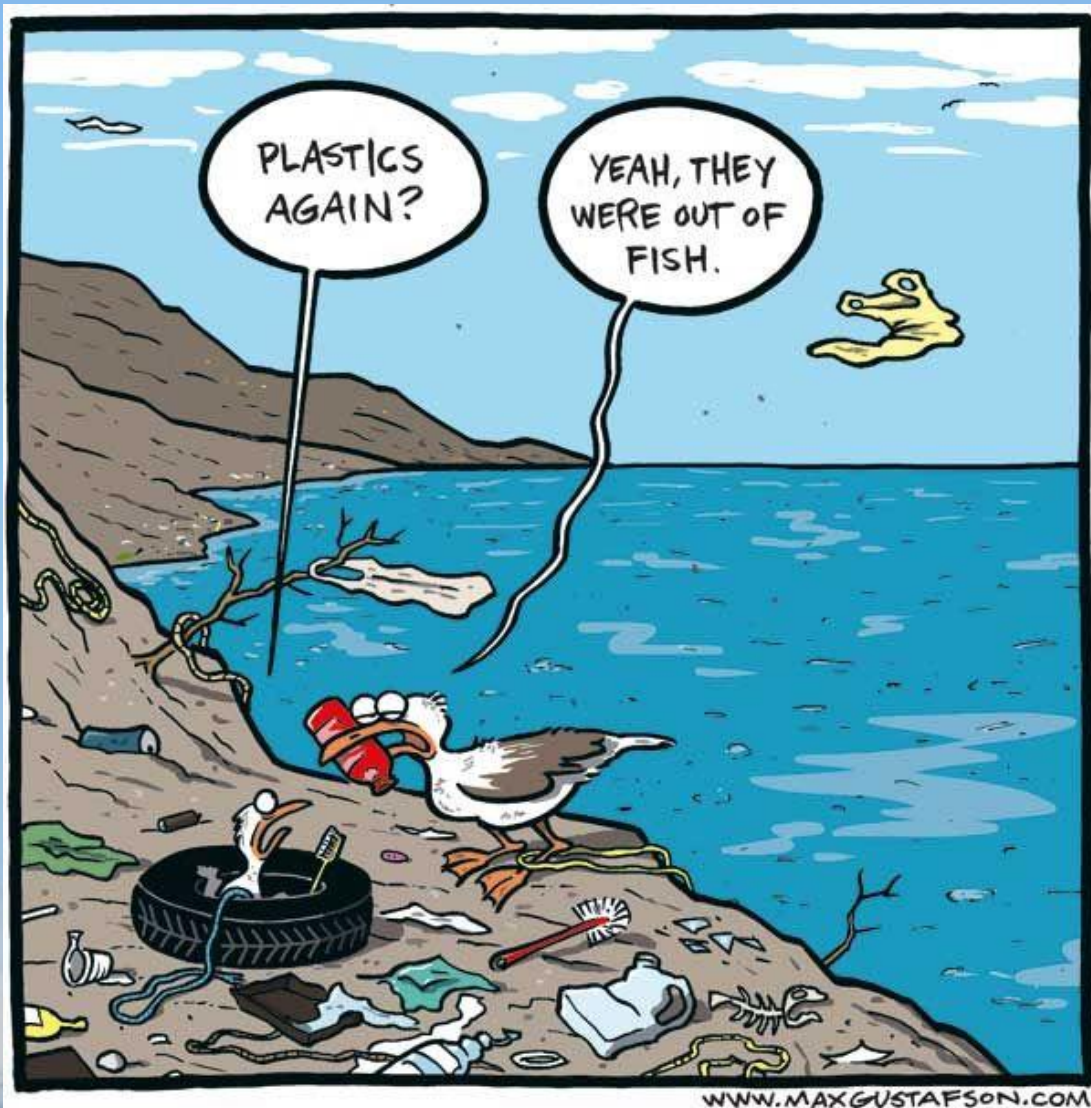


Bill Hess

CONCLUSION

- Inuit hold unique knowledge and a holistic understanding of the Arctic which is needed in Arctic research and monitoring
- Meaningful, equitable engagement of Inuit, our communities, and Indigenous Knowledge
- Use of all knowledge systems and the co-production of Arctic research for more effective and informed policies

Qujanaq – Quyana – Quyanaq - Qujannamiik - Nakurmiik -
Ma'na – Quanaqquitit - Thank you



<https://www.inuitcircumpolar.com/>