

**Looking towards
tomorrow – food service
and retail**

Food Service and Retail

Food service



Retail



Food service



Subsectors	Examples
Restaurants, cafés, bars	Typically freshly-prepared from a menu May serve meals and/or drinks May be standalone building or integrated into another, e.g. shopping mall or train station
Staff catering and other canteens	Limited table service and selection from limited menu of pre-prepared food May be situated in other establishments such as education, healthcare or corporate settings
Accommodation	Hotels and short-term accommodation with meals for residents Worker hostels, boarding schools etc. long-term accommodation
Education	Food served in educational institutions such as schools and universities, often canteen-style catering
Healthcare	Hospitals and other healthcare settings including elderly residential care
Sports & events	Sports games, music festivals, weddings, conferences. Typically not active all year
Security	Military bases, barracks and prisons. Typically serve all meals consumed by those on site
Markets / street food	Street food, markets and 'food trucks' selling prepared food

Retail

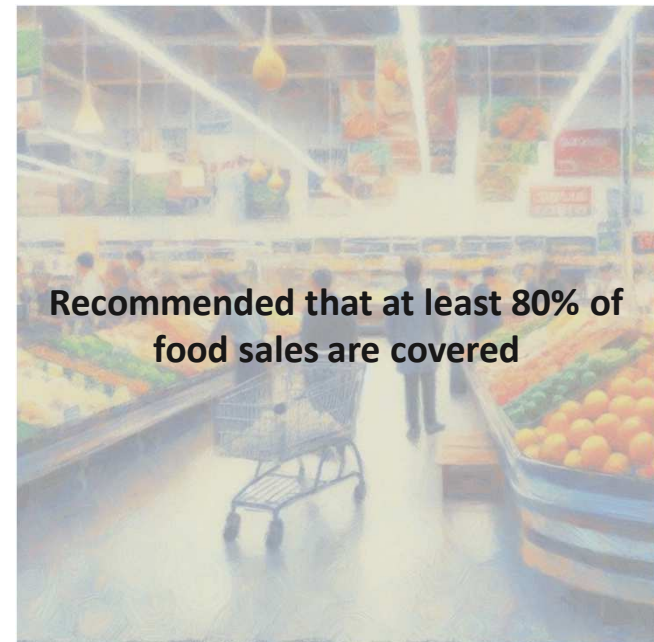


Subsectors	Examples
Supermarkets, convenience stores	Typically sell a variety of food and non-food products Often both packaged/processed and fresh food
Greengrocers', butchers', bakers' etc.	Specialist shops typically serving one category of fresh food May include some processing/manufacturing on site
Outdoor markets	Typically sell primarily fresh produce Often no refrigeration or packaging



Prioritising subsectors

- Balance between accuracy and cost
- For reasons of practicality, can focus on priority subsectors



What might be your priority subsectors?



Food service

Subsectors	Examples
Restaurants, cafés, bars	Typically freshly-prepared from a menu May serve meals and/or drinks May be standalone building or integrated into another, e.g. shopping mall or train station
Staff catering and other canteens	Limited table service and selection from limited menu of pre-prepared food May be situated in other establishments such as education, healthcare or corporate settings
Accommodation	Hotels and short-term accommodation with meals for residents Worker hostels, boarding schools etc. long-term accommodation
Education	Food served in educational institutions such as schools and universities, often canteen-style catering
Healthcare	Hospitals and other healthcare settings including elderly residential care
Sports & events	Sports games, music festivals, weddings, conferences. Typically not active all year
Security	Military bases, barracks and prisons. Typically serve all meals consumed by those on site
Markets / street food	Street food, markets and 'food trucks' selling prepared food



Likely a priority sector?

Likely to serve most meals across a country

Depends on economic structure, and if catering in schools/hospitals is reported separately

With substantial tourism, or workers hostels, could be priority.

Where school feeding programmes exist, likely to be a priority.

Depends on types of healthcare provided

Irregular events mean unlikely to be a priority, though some events may be waste reduction opportunities

Small population: unlikely to be a priority subsector

Depends on the economy, could be a priority.



Retail

Subsectors	Examples
Supermarkets, convenience stores	Typically sell a variety of food and non-food products Often both packaged/processed and fresh food
Greengrocers', butchers', bakers' etc.	Specialist shops typically serving one category of fresh food May include some processing/manufacturing on site
Outdoor markets	Typically sell primarily fresh produce Often no refrigeration or packaging



Likely a priority sector?
Will be priority in most countries
Depends on economic structure, may be in many places
Depends on economic structure, likely to be in many places



It will vary from country to country – make your decision based on *your* context

And be clear when reporting data about what has been included and what has not been included – transparency is key

