



**United Nations
Environment Programme
Mediterranean Action Plan**

Distr.: General
30 May 2023

Original: English

Integrated Meeting of the Ecosystem Approach Correspondence Groups (CORMONs)

Athens, Greece, 27-28 June 2023

Agenda Item 1.C.iv: Marine Litter CORMON

Guidelines for Monitoring Riverine inputs of Marine Litter

For environmental and cost-saving reasons, this document is printed in a limited number. Delegates are kindly requested to bring their copies to meetings and not to request additional copies.

Disclaimer:

The designations employed and the presentation of material in this publication do not imply the expression of any opinion whatsoever on the part of the Secretariat of the United Nations Environment Programme/Mediterranean Action Plan concerning the legal status of any country, territory, city or area or of its authorities, or concerning the delimitation of its frontiers or boundaries.

The Secretariat is also, not responsible for the use that may be made of information provided in the tables and maps of this report. Moreover, the maps serve for information purposes only, and may not and shall not be construed as official maps representing maritime borders in accordance with international law.

Note by the Secretariat

Rivers constitute the major pathways connecting land-based sources with the marine and coastal environments; the impacts of which are particularly evident for major rivers, as well as for small rivers, seasonal torrents and water streams. This is particularly evident in the Mediterranean Sea region. Considering that riverine inputs of marine litter are not properly addressed through IMAP as adopted in 2016, the Updated Regional Plan on Marine Litter Management in the Mediterranean (Decision IG.25/9, COP22) took the lead in introducing relevant provisions. In this regard, the Secretariat is further supporting this process through the implementation of the EU-funded Marine Litter MED II Project which aims in part to develop these guidelines as well as to support the execution of pilots in targeted countries (i.e. Israel and Morocco). Should the latter yield good results and provided that the Contracting Parties agree, IMAP would undergo an update in the future to include also riverine inputs of marine litter either under the existing indicators or by introducing new one/s.

Considering the needs to fill the methodological gaps on all different aspects of marine litter monitoring, UNEP/MAP and its MED POL programme presented a first version of the guidelines for monitoring riverine inputs of marine litter during the CORMON Meeting on Marine Litter Monitoring held on 31 May 2022 (UNEP/MED WG.534/4). The Meeting recommended the activation of the Online Working Group on Marine Litter (OWG-ML) with the aim to further improving and advancing the guidelines. The OWG-ML consisting of 22 Experts from 9 Countries (i.e., Croatia, France, Israel, Italy, Morocco, Slovenia, Spain, Tunisia, Türkiye) as well as the European Commission/JRC (see Annex II), held a series of consecutive online meetings between November 2022 and May 2023. Its comments substantially contributed to the updating of the guideline whereby an advanced version was presented to the CORMON Meeting on Marine Litter Monitoring held on 3 March 2023 (UNEP/MED WG.555/5). To note that these guidelines were also shared with HELCOM, OSPAR and Black Sea Commission; positive feedback was received.

This present Guideline extracts from the most commonly applied methodologies for monitoring riverine inputs of marine litter. At this stage, its focus is on monitoring macro- and micro-litter through the application of visual observations, surveys on the riverbanks and dams, use of manta nets, water pumps and floats. The present guidelines aim to support the technical personnel of the IMAP competent institutes and laboratories to implement suitable monitoring techniques when measuring the riverine input of marine litter disposed to the Mediterranean Sea.

The present Guideline is submitted to the present Integrated CORMON Meeting (27-28 June 2023) for review and approval to submit to the upcoming EcAp Coordination Group Meeting to be held on 11 September 2023.

Table of Contents

1.	Introduction	1
2.	Riverine inputs of marine litter.....	1
3.	Methods for monitoring riverine inputs of marine litter.....	2
4.	Monitoring of macro-litter in rivers	4
4.1	Monitoring floating macro-litter through visual observation	4
4.1.1	Site selection and preparation.....	4
4.1.2	Sampling duration and frequency.....	5
4.1.3	Data collection.....	6
4.1.4	Meta data	6
4.2	Monitoring litter deposited on riverbanks	7
4.2.1	Site selection and preparation.....	7
5.	Monitoring of micro-litter in rivers and river outlets	12
5.1	Sampling microplastics in river outlets with the use of manta net	12
5.1.1	Manta net properties	14
5.1.2	Use of the manta net in rivers.....	14
5.1.3	Designing a monitoring campaign.....	15
5.1.4	Calculating the Surveyed Areas	17
5.1.5	Sample Collection and Storage	17
5.1.6	Laboratory Analyses of Samples Collected at Sea:	18
5.1.6.1	Cross Contamination	18
5.1.6.2	Equipment at the Laboratory	19
5.1.6.3	Five Steps at the Laboratory.....	19
5.1.7	Keynotes.....	24
5.2	Sampling microplastics in the water column with the use of a water pump and filtration system.....	25
5.2.1	Water pump and filtration system properties:	25
5.2.2	Use of water pumps in rivers.....	27
5.2.3	Designing a monitoring campaign.....	29
5.2.4	Sample Collection and Storage	31
5.2.5	Laboratory Analysis of Samples collected using a water pump.....	31
5.2.6	Keynotes.....	31
5.2.7	Sampling floats.....	31
6.	Summary of Advantages and Disadvantages for the proposed Methodologies	32
	References	34
Annex I:	MED POL List for Beach Marine Litter Items	
Annex II:	Experts - Members of Online Working Group on Marine Litter who Contributed to the Development of the Present Document	

List of Abbreviations / Acronyms

CI	Common Indicator
EU	European Union
FT-IR	Fourier-transform Infrared Spectroscopy
GPS	Global Positioning System
IMAP	Integrated Monitoring and Assessment Programme of the Mediterranean Sea and Coast and Related Assessment Criteria
JRC	Joint Research Centrum
MSFD	Marine Strategy Framework Directive
MED POL	Mediterranean Pollution Assessment and Control Programme
MED QSR	Mediterranean Quality Status Report
PVC	Polyvinyl Chloride
QSR	Quality Status Report
TGML	Technical Group for Marine Litter
UAV	Unmanned Aerial Vehicle
UNEP	United Nations Environment Programme
UNEP/MAP	United Nations Environment Programme / Mediterranean Action Plan
WGS	World Geodetic System

1. Introduction

1. The present guidelines and methodological overview are developed by UNEP/MAP and its MED POL Programme, with the assistance and expert knowledge of 22 Mediterranean Experts representing Turkey, Spain, Italy, Croatia, Israel, Tunisia, France, Slovenia, Morocco and JRC, in the framework of the EU-funded [Marine Litter MED II Project](#). The Marine Litter MED II Project addresses challenges and solutions with regards to the operational aspects and monitoring processes of implementation of the updated Regional Plan on Marine Litter Management in the Mediterranean. The project envisages to expand marine litter monitoring and assessment efforts also to riverine inputs, focusing on filling the knowledge and data gaps through the execution of targeted pilots in Israel and Morocco, and the development of a guideline for monitoring and assessing riverine inputs of marine litter, further, to taking stock of existing efforts and initiatives (e.g., UNEP¹, EC JRC/RIMMEL² and EU MSFD TGML) and aiming to adjust them to the Mediterranean needs. As the scientific development of methodologies is ongoing, a variety of approaches is presented here, not yet a single harmonised approach to riverine litter monitoring.

2. The Guidelines for Monitoring Riverine Inputs for Marine Litter aim to supplement, support and enrich the [Integrated Monitoring and Assessment Programme of the Mediterranean Sea and Coast and Related Assessment Criteria \(IMAP\)](#). The data acquired from the present guidelines will prepare the ground for expanding the marine litter Common Indicators under IMAP auspices, also to include new indicators such as riverine inputs, and to contribute to the extent possible to the development of assessment reports in the framework of UNEP/MAP.

3. The guidelines describe sampling methodologies for both macro- and micro-litter, and in particular plastics, originating from rivers around the Mediterranean. It also defines and describes laboratory techniques and analysis pertinent to the identification, characterization, and quantification of macro- and micro-litter, aiming to provide technical guidance and harmonized approaches to the Contracting Parties of the Barcelona Convention, including for the development of dedicated national monitoring programmes.

2. Riverine inputs of marine litter

4. Rivers have been identified as major pathways that connect land-sources of plastics with the marine environments. Several studies have been dedicated to documenting and assessing riverine inputs of marine litter entering into the marine environment (van der Wal et al., 2015; González et al., 2016; Crosti et al., 2018; Schirinzi G.F et al., 2020). All conclude that riverine systems play a major role in transporting land-based plastic waste into the world's oceans (van Emmerik, T., et al., 2020). Once plastics enter the estuary, the combination of riverine and tidal dynamics determines the fate of plastics and its entrance to the marine environment (Tramoy et al., 2020).

5. Freshwater bodies such as lakes and reservoirs and rivers are impacted by plastics contamination in the same way as the marine environment. Despite the relevance, the current understanding of transport processes, loads and impacts of marine litter in freshwater bodies is limited, mainly because data are lacking and most published data on freshwater plastics come from individual projects which apply different sampling and analysis techniques. Discrepancies of several orders of magnitudes between the estimations of plastic fluxes from land to the sea are attributed to methodological oversimplifications that

¹ [United Nations Environment Programme \(2020\). Monitoring Plastics in Rivers and Lakes: Guidelines for the Harmonization of Methodologies. Nairobi](#)

² https://mcc.jrc.ec.europa.eu/main/dev.py?N=simple&O=380&titre_page=RIMMEL&titre_chap=JRC%20Projects

amplify errors in the process leading from the individual quantification of plastic litter in rivers to the calculation of global river budgets (Weiss et al. 2022). The lack of harmonization hampers the comparison and ultimately the synthesis of data.

6. Fragmentation of rivers by anthropogenic barriers, including dams, is widespread worldwide (Grill et al. 2019; Belletti et al., 2020; Dhivert et al., 2022). These barriers limit the ability of rivers to flow unimpeded (Falkenmark et al., 2003), altering their connectivity and hydrodynamics, and thus affecting the transport, suspension and deposition of their sediment load (Wu et al. al., 2022).

7. Hydrodynamic changes, which affect different parts of dams (e.g., upstream, reservoir and downstream) make reservoirs a sink for plastic pollution in long-term riverine systems (Watkins et al., 2019), and which are in addition in several cases, an important drinking water resource. Moreover, it has been reported that abundance of microplastic close to the dams is much higher than in several other marine and/or freshwater systems, especially during the summer period (Norén et al., 2010). Reservoirs are, for this purpose and with respect to plastic pollution, can be quite representative for the entire surrounding area (Zhang et al., 2015).

8. Ultimately, the accumulation of sediment in reservoirs can have a great influence on the transport of plastics (especially for microplastics) to the global ocean. (Dhivert et al., 2022; Wu et al., 2022), implying the importance of considering dams when modeling global riverine transport of plastics. (Watkins et al., 2019).

3. Methods for monitoring riverine inputs of marine litter

9. River mouths can provide substantive information on the accumulation and composition of litter entering into the marine ecosystem. However, the sampling location may largely influence the results. Mixing zones between fresh- and saltwater, as well as turbulences and tidal regimes may affect the pathways of litter. For example, it is not recommended to sample directly at the estuary or the river deltas (which is largely influenced by the seawater inputs), but rather in a location a bit more upstream. The ideal sampling location (Figure 1) can be determined based on the available information that will be in place regarding the site area and the sampling location opportunities such as the presence of bridges, pontoons or any elevated area that facilitates the observation of litter and the deployment of sampling devices. If the sampling location cannot be performed in the riverine mouth, it is very important to measure the distance between the sampling area to the mouth of the river and assess if there are new sources of littering between the observation point and the sea. In addition, it is important to investigate also small ditches, not tributaries of bigger rivers, which could be used as illegal dumping sites and during floods the accumulated litter are directed into the sea.

10. Sampling period is another important aspect when monitoring riverine inputs of marine litter. Riverine areas are subject to complex flow dynamics and are influenced by the tides and freshwater discharges. Flow velocity and direction may change on hourly timescales, which in turn influences litter and plastic transport and export to the marine environment. Ideally, the monitoring should focus on relatively frequent and long-term monitoring in a modest number of locations, rather than sampling sporadically in several locations. Monitoring should be taken during average conditions. In addition, considering that most of the items would reach the sea during floods, and that during such events monitoring is impossible, it is recommended to assess, for each monitored river, the flux of items both in normal and flood conditions. Use of GPS tracker in rivers, simulating flux macro plastic items, should be considered prior starting the visual monitoring project (Manghi et al., 2022).

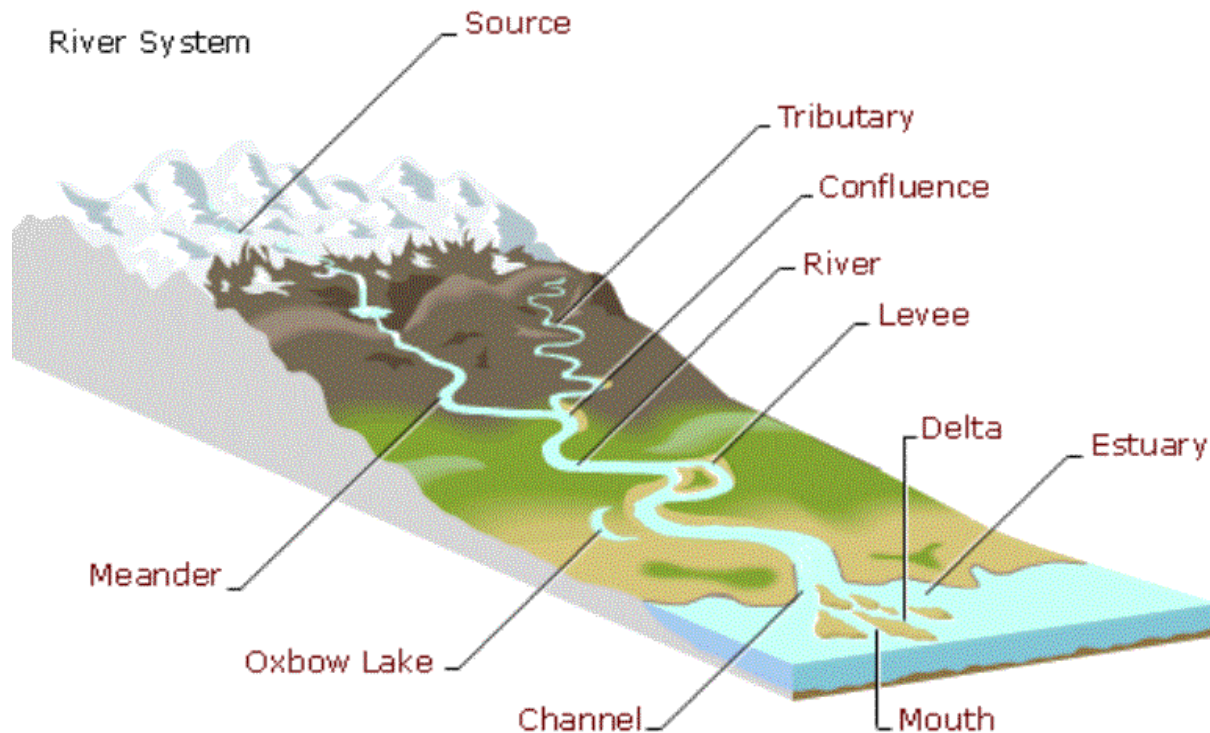


Figure 1: Riverine structure (Extracted from: <https://www.geographypods.com>).

11. The use of available metadata (e.g., river discharge, salinity, particulate and dissolve organic matter, nutrients, typical fish populations, pollutants etc.) enables the development of an adequate and efficient plan based on the available monitoring resources. Information on the most common activities carried out around the sampling area can also provide substantive information on the type of litter that is expected to be found and which area (e.g., agricultural areas, city infrastructures, industries, population density, sewage treatment etc.) would be relevant for the implementation management measures. Moreover, importance must be given to the administrative borders between the districts to avoid any possible disagreements.

12. This method overview focuses, describes and elaborates on four (4) basic categories of monitoring strategies that can be applied for micro- and macro-litter through the application of: (i) visual observation of macro-litter; (ii) collection of macro litter on the riverbanks; (iii) use of manta nets for meso and micro-litter; and (iv) use of water pumps with filtration systems.

13. A brief overview of the aforementioned methods is presented hereunder focusing on consistent, widely used and cost-effective methods that could be considered for use by the Contracting Parties for this purpose around the Mediterranean. Harmonization and agreement on the best practices will be required in order to derive datasets that are comparable across watershed and basins.

4. Monitoring of macro-litter in rivers

4.1 Monitoring floating macro-litter through visual observation

14. In the marine environment, methodologies and protocols for visual observation at sea have been proposed by several institutions and scientific research groups such as European Commission (EC JRC, 2013), NOAA Marine Debris Program (NOAA, 2013) and UNEP/MAP (2016). Visual counting of plastic litter can be performed in both marine and freshwater environments, consisting of a rather simple method to determine litter transportation. Despite the shortcomings that visual observation may impose (e.g., submerged floating items are not visible in turbid rivers and items can only be identified during the shore time they float by), it is a low-cost option which enables high frequency monitoring in many sites.

15. To acquire more accurate data on plastic composition and mass transportation, it is advisable to perform also physical samplings using nets where possible, to convert the measured transport in items per unit of time to actual mass transport.

16. The European Commission Joint Research Centre (EC JRC) within the [RIMMEL project](#)³ developed a harmonized collaborative approach using a tablet computer application for the collection of data in river estuaries. The methodology is based on visual observations using a common agreed list of litter items and size categories. The project resulted in the development of a mobile computer application, the Floating Litter App, that, together with a data management website, enables the harmonized monitoring of floating litter at sea and on rivers. The application allows real time data acquisition during monitoring sessions, thus providing a tool for data collection and reporting⁴.

17. A method for observation and collection of information should be harmonized through the development of relevant region-wide agreed reporting templates, enabling comparability of data. The use of a smartphone application is an option, and it could be further developed at a later stage such as to facilitate data collection and harmonization, while ideally a large-scale approach would provide benefits for cross-basin collaboration.

4.1.1 Site selection and preparation

18. The selection of an elevated position is recommended to start the visual observations (e.g., bridges, piers, pontoons). Taking into consideration the river width and the number of people being involved in the sampling, the sampling area should be divided into respective sections. The definition of observation section width (i.e., the section which the observer uses for identification the identification of the litter items) would allow the estimation of litter fluxes in relation to the river section total width (i.e., distance between the two margins at the monitoring). The height and width from the sampling location influence the width of the section that can be observed comfortably; therefore, the width equal to the observation height generally is recommended. In order to avoid over or under estimation of object fluxes, it is important that the total observation width (also in different sections), comprise at least of half of the river, starting from the riverbank to the center of the river. Preferably, measurements should be performed over the total width of the river to avoid harsh extrapolations, if needed with the help of additional observers.

³ The RIMMEL Project was a JRC Exploratory Research Project, executed in 2015-2017, aiming to quantify floating macro litter loads through rivers to marine waters, by collecting existing data, developing a European observation network, deploying a camera system and using the resulting data to build a statistical inverse model of litter loading based on the characteristics of the catchments (Gonzalez-Fernandez 2021).

⁴ <https://floating-litter-monitoring.jrc.ec.europa.eu>

19. For river dams and given the relatively limited extension of these structures/areas, small boats can be also used, where the height of the observer is about 1 to 2 m above water level (Curmi and Axiak, 2021; Currie et al., 2017). Where the observer height is defined as the vertical distance between the observer's eye line and the surface of the water. The observation band recommended by Arcangeli et al. (2020) for small boats is a fixed width of 3 m (which becomes 6 m if two observers participate, one on each side of the boat). This approach is likely to provide more realistic concentration estimates, especially for small-sized debris, and also allows the estimation of densities (MEDSEALITTER, 2019).

20. Visual observations methodologies present some limitations such as weather conditions, sun orientation, the height of the observation site (i.e., from bridges or vertical distance), as well as characteristics of the litter items (i.e., color, size, shape, and floatability).

21. In the framework of the EU Marine Strategy Framework Directive (MSFD), floating macro-litter monitoring refers to items greater than 2.5 cm, due to their buoyancy properties and capability of floating or suspending in the river surface layer. Therefore, the height of the selected observation site (i.e., vertical distance between observer's eyes and river surface) should allow the detection of litter items down to 2.5 cm. The use of binoculars might help in the identification of litter items, if necessary (wide angle binoculars, max x5), but their use should be evaluated case-by-case. Nevertheless, as river characteristics and bridges vary greatly between locations, the deployed protocol should be always fine-tuned to the respective needs and site specificities. In order to enable data comparability, it is important, based on the observation height and section width, to set up a "best" value. The best value is the size which cannot be missed, if floating, from the observation point. Objectively, in order to assess the 2,5-5 cm class, the observation point/s for the case of clear waters might not be higher than 10m and the section width larger than 15m.

22. To design a monitoring campaign or programme, the location of the observed site should be considered. For example, it is easier to visualize macro-litter from bridges, and ideally the surveyor/s should be located in elevated structures for a favorable angle of view. For rivers with broad width and in which relevant stable structures are not in place, the visual observations could be undertaken from a vessel⁵ (González-Fernández et al., 2018) (as mentioned in Paragraph 19 for river dams).

4.1.2 Sampling duration and frequency.

23. The river surface water speed must be measured when establishing the duration of the sample as well as for the surface flux calculation later. For rivers with considerable variation in flow velocity, such as riverine areas (Figure 1), it is recommended to take measurements at least once per hour. Surface water speed can be then used to assess marine litter density values.

24. The load of litter transportation will influence optimal observation duration while noting that the representativity of sampling would profit from longer observation duration/periods, also considering the observer fatigue limits. For rivers with more than 1,000 items per hour, it is recommended to measure one or two minutes per section. For rivers with less than 100 items per hour, it is recommended to measure at least 15 minutes per section⁶ (UNEP 2021).

⁵ MEDSEALITTER Project, Deliverable 3.3.2: [Shared protocols for marine litter monitoring](#) (January 2018).

⁶ Note: a very high number of objects may also require longer periods, in order to avoid monitoring just peak events.

25. Ideally, the duration of each measurement should be equal to one hour divided by the number of sections. In addition, frequent samplings will provide an expected high temporal variability in litter loads, thus weekly or bi-weekly observations are recommended, covering low and high waters (JCR 2018). The sampling frequency could be modified in line with the local/national conditions (e.g., proximity to the sampling site, numerous riverine structures, etc.).

26. For the case of dams, where small boats are used, the choice of the length of the transects and the duration of the observation remains linked to the morphological and hydrodynamic characteristics of the reservoirs of the dams. Indeed, two factors to consider when planning a monitoring campaign:

- a) The horizontal zonation of the reservoir, namely (i) a more fluvial part with a measurable flow, (ii) an intermediate zone, and (iii) a lacustrine zone near the dam where the flow is close to zero (Uhlmann et al. 2011); and
- b) The concentration of floating waste downstream and towards the banks of the reservoirs, depending on the hydrodynamics and the wind regime (observation in the field).

4.1.3 Data collection

27. Each visible floating and superficially submerged plastic piece must be counted⁷, independent of its size, with an established lower limit (2.5 cm) enabling data comparability. An estimation of the minimum average size of plastic debris must be taken into consideration and if the item is uncertain in terms of description, it is recommended that the item is not counted as plastic.

28. Preferably, litter should be counted over time and space to arrive at a plastic transport profile over the river width, and total plastic transport in items per unit of time (items per hour). The number of items per hour per section provide the spatial variation over the river width, and the sum of the sections provide the total number of floating pieces of plastic per hour over the whole river width. Alternative unit could be also considered consisting of items/time/river width thus, extrapolating density at the level of the river mouth.

29. To categorize the observed items, the common agreed MED POL list for beach marine litter items (IMAP Common Indicator 22) is recommended in order to ensure comparability. The MED POL list can be modified locally and could be used after possible adaptation to narrow down the available options in line with the items that are mostly recorded in the respective riverine areas (Annex I). The JRC/TGML Joint List of Litter Categories could be also used, provided being compatible with the respective MED POL list.

4.1.4 Meta data

30. The river surface flow velocity must be measured several times during the survey, and certainly every time that an alteration is observed. The assessment of the river water surface (e.g., turbulence and presence of natural foam), wind direction and intensity, cloud/rain (during the day of observation, one day before, and also considering monthly averages), light conditions (e.g., reflections, direction of the sun and shades), tidal conditions and visibility (e.g., fog) must also be recorded. It should be noted that monitoring events/surveys should be avoided during bad weather conditions, especially when resulting in low visibility conditions as they may influence the observations and counts, thus not reflecting the real

⁷ Within the 3m strip for the case of use of small boats with 1 observer (6m if 2 observers).

amount of objects and leading in erroneous extrapolations. Moreover, in case of tidal events it is recommended to count average conditions.

31. For each observed section, the GPS coordinates (grades and thousandths, GG, GGGGG) must be recorded in WGS 84.

4.2 Monitoring litter deposited on riverbanks

32. The proposed monitoring on riverbanks is based to a great extent on the methodologies for monitoring beach marine litter, after being adapted to the needs for monitoring litter deposited on riverbanks. It should be considered that the dynamics of litter deposition on coasts and river banks are very different, thus the methods and results are not comparable. So far, several studies have been undertaken where the beach litter protocol was adapted for usage on riverbanks (Schone Rivieren, 2017; Bruge et al., 2018; Van Emmerick et al., 2020; UNEP, 2020; Cedre, 2022).

4.2.1 Site selection and preparation

33. Riverbanks of interest are located along watercourses that cross anthropized areas (e.g., urban, industrial or agricultural areas) (Figure 2). The riverbanks may be located in the estuary or immediately above it, at a sufficient distance to prevent marine litter entry.

34. Riverbanks, where survey sites are located, should be selected on the basis of the following criteria:

- a) **Safety:** the site must be safe for operators (unstable bank, too steep, too much vegetation, etc.);
- b) **Site location:** it must be located beyond the limit of the possible entry of marine litter from the sea (resulting from the action of wind, currents, or waves);
- c) **Site length⁸:** depending on the site condition and accessibility as well as on litter density, the site length may vary from 10 to 50 or even up to 100m, provided that the selected site length remain the same throughout the monitoring campaign;
- d) **Accessibility:** the site should be accessible all year round (except during exceptional event like flood or overflow);
- e) **Presence of litter:** the site should have litter deposited without being an accumulation area (Figure 2). Sluices, weirs and pumping stations in the vicinity of the location should be considered since those can influence the litter present in the riverine environment. The riverbank can be submerged temporarily with higher water levels to allow deposition of litter;
- f) **Absence of clean-up activities:** the site should not be subject to any other litter collection activities.

⁸ The selection of the site length should accommodate the widest available riverbank stretch.

4.2.2 Sampling unit and frequency.

35. The sampling unit may vary from 10, to 50 or up to 100 meters, measured as a straight line parallel to the back of the riverbank. The whole stretch is surveyed, from the water edge to the back of the bank, defined by physical structures such as towpath, vegetation, highest bank line, etc. Permanent reference points must be used to ensure that exactly the same sampling unit is monitored during each survey.

36. In line with the methodology applied for beach marine litter monitoring, it is proposed to conduct the surveys once every 3 months, resulting in four datasets per riverbank per year (one per season). The proposed survey periods are January (Winter); April (Spring), July (Summer) and October (Autumn). It should be noted that winter surveys may be compromised due to flooding events whereas summer surveys can be complicated by the presence of vegetation (density and height). The vegetation on riverbanks may vary considerably over seasons and thus influence the litter "trapping" capacity, and the relevant seasonal fluxes.



Figure 2: Example of riverbanks of interest for monitoring litter (©Cedre).



Figure 3: Example of litter deposited on the bank (©Cedre).

37. Circumstances may lead to inaccessible and unsafe situations for surveyors (e.g., heavy winds, flood, river traffic, etc.). In some areas, it may not be possible to search down to the water line due to the presence of unsafe conditions (e.g., unstable sediment, slope too steep, etc.) (Figure 4). The surveyors have to stop at the stable sediment limits.

38. The safety of the surveyors must always come first, and it is highly recommended that the surveys are conducted by trained surveyors.

4.2.3 Data collection

39. All **visible** marine litter items larger than 2.5 cm found stranded on the riverbank **or trapped** in the vegetation (but not deep into /or covered by the vegetation deposits), within the sampling unit must be collected and counted (see Figure 5). The marine litter items to be surveyed include identifiable litter types and associated pieces of these types, as well as unknown items and unknown marine litter fragments (Figure -6). It is important that every item is counted. The presence of chemical pollutants (e.g., paraffin wax and other pollutants such as oil) and industrial plastic pellets should also be recorded.



Figure 4: Unstable muddy sediment limiting sampling down to the water line (©Cedre).

40. In situations, where large amounts of marine litter items are found or survey conditions are difficult (e.g., rain, heavy winds, snow, etc.), the collected marine litter can be stored in bags and sorted and counted in a sheltered place or indoors. In this case, care should be taken to prevent fragmentation and/or entanglement of the litter items, which would affect the number of items counted.

41. To categorize the observed items⁹ the common agreed MED POL list for beach marine litter items (IMAP Common Indicator 22) could be used after possible adaptation to narrow down the available options in line with the items that are mostly recorded in the respective riverine areas (Annex I). The JRC/TGML Joint List of Litter Categories could be also used.

⁹ Remark: the same methodology can be applied for lake shores.



Figure 5: Litter collected, to be further classified and characterized (©Cedre).

4.2.4 Meta data

42. The same sampling site should be monitored for all surveys planned in the monitoring programme. Coordinates of the sampling site must be recorded in WGS 84 (DMS, DD). The length and width of the sampling site must be recorded in meters. Additional descriptive information (e.g., natural or artificial bank; meandering or straight stream; nature of the back of the site, etc.) can be recorded.
43. For each survey, weather conditions should be recorded (wind strength and orientation) and where possible recent water flux and/or level and river width.
44. For each survey, information on particular events (flooding, storm events, etc.) or on change site morphology (erosion, vegetation coverage, etc.) that may have influenced the survey, should be provided.
45. The IMAP InfoSystem reporting templates for IMAP Common Indicator 22 (beach macro-litter) could be used to enable data reporting after minor adjustment, including the development of a dedicated information repository reflecting the different site characteristics.
46. The proposed reporting unit for collecting data is items / 100m.



Figure 6: Litter classification and categorization phase (©Cedre).

5. Monitoring of micro-litter in rivers and river outlets

5.1 Sampling microplastics in river outlets with the use of manta net

47. The Manta Net or Manta Trawl is the most commonly used sampling equipment for monitoring floating microplastics at sea (Figure 7). This tool is specifically designed to collect samples from the sea surface layer. The use of Manta Net allows the sampling of large volumes of sea water, retaining at the same time the target material (i.e., microplastics); and it is not limited to flow because it is dragged by boat. The latter is useful only during extreme weather and flooding events when flux is high. However, its application in rivers is more complicated because of the risk of clogging, and the net size and weight is limited by the river depth and width. A light small net with buoys is currently tested in by the Israel Oceanographic and Limnological Research Institute (IOLR) in the framework of the EU-funded [Marine Litter MED II Project](#). The conclusion from the current pilots in Israel is that for small rivers the small net is more applicable and can be easily used from a bridge. Yet, sampling is possible only when river's current and wind are aligned or when the current is sufficient (further study is required).

48. Despite the overall guidance provided under the present guidelines to monitor upstream, inside the riverine structure, sampling of microplastics with manta net is proposed to be carried out outside the river gradient; thus, enabling integration with the existing IMAP-based national monitoring programmes for IMAP Ecological Objective 10 and its Common Indicator 23, as well as data comparability.

49. UNEP/MAP MED POL has elaborated detailed guidelines¹⁰ for monitoring floating microplastics at sea with the use of manta net agreed region-wide since 2021¹¹. The said guidelines could comprise the basis in terms of methodological and laboratory elements; however, it should be noted that there is a fundamental difference in the methodology, as when it comes to its application in rivers, the area of interest is the mouth of the river outside of the river gradient. In this regard, when focusing on sampling of floating microplastics in rivers, it is advisable to conduct the sampling in calm river conditions, preferably when wind intensity is less than three (3) Beaufort (approximately 13-19 km/h).



Figure 7: Manta net being operated in calm sea, outside of the bow wave caused by the spinning of the propeller (Photo: © Christos Ioakeimidis, UNEP/MAP).

¹⁰ UNEP/MED WG.490/7: Monitoring Guidelines/Protocols for Floating Microplastics (Meeting of the Ecosystem Approach Correspondence Group on Marine Litter Monitoring (CORMON Marine Litter), Videoconference, 30 March 2021).

¹¹ UNEP/MED WG.490/7: Meeting of the Ecosystem Approach Correspondence Group on Marine Litter Monitoring (CORMON Marine Litter), 30 March 2021.

5.1.1 Manta net properties

50. The Manta Net or Manta Trawl is the most commonly used sampling equipment for monitoring floating microplastics at sea. This tool is specifically designed to collect samples from the surface layer of the sea. However, it can be also used for monitoring riverine floating microplastics, especially in the water mouths outside of the river gradient.

51. The use of Manta Net allows the sampling of large volumes of water, retaining at the same time the target material (i.e., microplastics).

52. Mouth size and length: The Manta Net (see Figure 7) consists of a rectangular metal floating device from which a net cone is attached, having a final collection sock (or any other relevant collection equipment) at its very end where the microplastics and the organic matter are collected. The dimensions of the mouth of the metal device are not pre-determined, it is however advisable to always maintain a ratio equal to $\frac{1}{2}$ between the height and the width of the mouth of the metal device. The most common dimensions of the mouth of the Manta Net are 50 cm in width and 25 cm in height, however other dimensions are possible. These dimensions refer to the inside size of the mouth, the part to which the 2.5 m net in length is connected. The outer part is wider assuming an overall truncated pyramid shape.

53. Mesh of the net and cup/sock: The net cone, which is attached to the floating metal device, should be made out of a net with a mesh size of approximately 330 μm . In order to avoid problems of regurgitation following clogging, especially in eutrophic waters, it is necessary to constantly check the effectiveness of sampling. Optional, for areas with high gelatinous organisms and zooplankton, a metal net (mesh 1-2 cm) could be added in front of the mouth of the manta net.

54. Dimensions of the wings: Two metal wings are attached right and left from the metal device to ensure that the Manta Net is always kept floating on the sea surface (Figure 7). The dimensions of the wings depend on the weight of the mouth since they are used to ensure the buoyancy of the instrument. Therefore, it depends on the weight of the metal floating device. In most cases, each wing has the same dimension in length as the metal mouth. A size of 40–70 cm in length is generally expected, In any case, they should be sufficiently large to keep the Manta Net afloat.

5.1.2 Use of the manta net in rivers

55. The Manta Net could be either lowered slowly from the boat or the vessel to the river mouth and is left afloat or could be deployed by stable structures (e.g., rivers over the river mouths). However, the latter option (deployment from stable structures) may require significant labor-intensive effort and pose operational risks because of the considerable weight of the sampling device (manta net).

56. According to the dimension of the boat it is possible to tow the net from stern or from the side. If the net is lowered to stern, the distance between the boat and the Manta Net should be at least 50-70 m. If the net is lowered on the side, of the boat the net should be kept at the distance of around 3 m. When possible, it is suggested to use non plastic material rope in order to avoid contamination. The pull of the manta net from the side of the vessel or the zodiac may be another option (Figures 8 and 9). It is extremely important for the manta net to be left outside of the bow wave caused by the spinning of the propeller because this turbulence will significantly influence the amount of collected microplastics as well as the contamination due to paint chips from the vessel (Figure 8).

5.1.3 Designing a monitoring campaign

57. Method for sampling: A proper design of the monitoring surveys should include an area close to the river mouth, outside of the river gradient. Sampling should be carried out preferably at 3 stations located at different distances from the river mouth (e.g., 0.5, 1.5, 3 Naut. Miles) set along an orthogonal line to the coast. Once the boat/vessel is positioned at the sampling point, the manta net is lowered and trawled for approximately 10 to 20 minutes (the exact timing should depend on issues relevant to the clogging of the Manta Net) along a straight transects, with a speed approximately of 1-2 knots. In order to allow the Manta Net to properly filter the water and thus have its whole mouth submerged into the sea, under no circumstances the speed should exceed 3 knots. The 10- to 20-minute trawl must be conducted in the opposite direction to the surface current or in any case opposite to the wind direction.

58. *Optional:* In case of large quantities of organic matter, mucilage and gelatinous zooplankton are present during the sampling, it is suggested to split the sampling time into two hauls (e.g., x2 hauls of 10-minute duration). The two hauls should be merged to have an equivalent to one haul (e.g., 1 haul of 20 minutes).

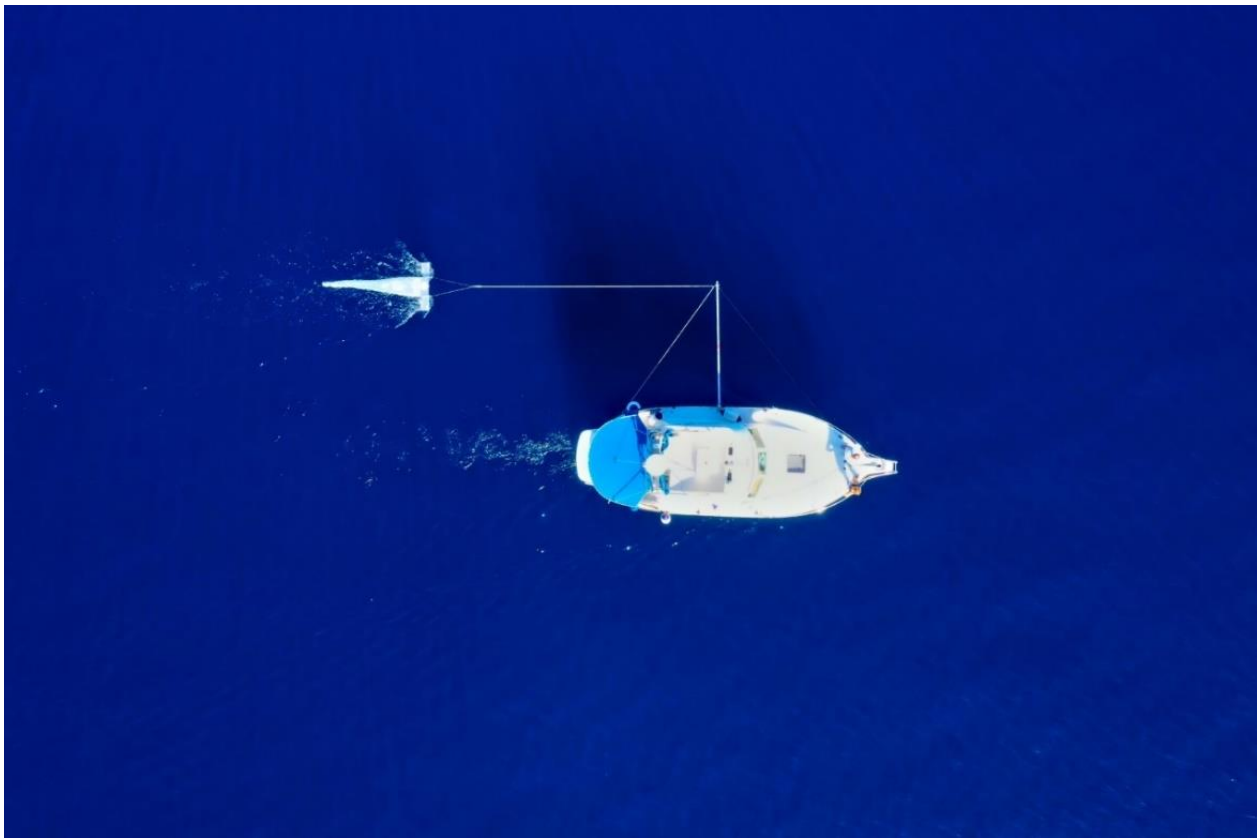


Figure 8: A manta net being pulled from the side of the vessel (Credit © Stipe Muslim, Croatia)



Figure 9: A manta net being pulled from the side of the vessel (Credit © Cecilia Silvestri & Marco Matiddi, Italy)

59. The monitoring of the weather conditions (i.e., wind direction and precipitation) is advised on a daily basis for a period of 2-weeks ahead of the sampling campaign, as relevant measurement could provide a comprehensive idea about the river flow. Relevant data can be obtained by existing meteorological stations etc.

60. GPS Coordinates: For each trawl the GPS coordinates (grades and thousandths, GG°, GGGGG) at the beginning and end of sampling must be recorded in WGS 84 format. Additional GPS coordinates (e.g., every 10 minutes) are most welcomed as will allows to confirm, or not, the rectilinear transect and even to determine a more accurate length of the trawl. In case of large quantities of organic matter and relevant organic gel are present during the sampling, it is suggested to decrease the sampling time into two 10-15 minutes hauls.

61. Position of the survey stations: The position of the stations for riverine monitoring must be determined according to the characteristics of the survey area (i.e., storage areas for local riverine hydrodynamic conditions, distance from direct input sources, such as river mouths, etc.). The number and position of the survey stations will be established in order to have a better representation of the entire region, considering areas of both high and minimum anthropogenic activity/impact. The criteria for choosing the position of the transects must be recorded on dedicated sampling sheets.

62. Replicates: Because of the variability of riverine floating microparticles distribution, it is necessary to increase the data representativity. Further, it is strongly recommended to carry out replicates from the same sampling point. Three replicates for each station are recommended. Each replicate must be conducted following the transect in the opposite direction to the riverine surface current or in any case opposite to the wind direction, approximately parallel to the first one.

5.1.4 Calculating the Surveyed Areas

63. The surface area of the surveyed water: The calculation of the amount of microplastics should be expressed in number of microplastic particles per square meter based on the following methodological approach:

The surface areas of surveyed water (S) is calculated using the following formula:

$$S = D \times W$$

Where: D: is the distance of the sampled rectilinear transect
W: is the width of the mount of the Manta Net

* It is possible to calculate D by using a flowmeter, or GPS coordinates, or vessel instruments

64. *Optional:* It is also possible to calculate the filtered volume (m³) by: (i) multiplying the area of the mouth of the net by the distance covered during the tow; or (ii) applying the appropriate formula of the flowmeter as follow:

$$(i) \quad V = D \times A$$

$$(ii) \quad V = N \times A \times c$$

D: is the distance of the sampled transect (m)
N: is the number of turns of the propeller recorded by the flow meter during the transect;
A: is the area of the mouth of the used Manta net;(width x height)
c: is a constant value, typical of each flowmeter.

It should be noted that the filtered volume using a flowmeter is more accurate, but the flowmeter needs a continuous maintenance, and it can stuck during sampling. For this reason, the square meter measure must be always calculated.

5.1.5 Sample Collection and Storage

65. Once brought back to the boat or the vessel, the net must be rinsed each time, with fresh/brackish water from the outside to the inside, from its part close to the mouth towards the collection sock, in order to concentrate all the natural and man-made materials to the cod-end. The collection sock is removed, and the material is transferred into a 250 or 500ml glass bottles for subsequent qualitative and quantitative analysis (Figure 10). The sock/cup should be washed, from the outside, using distilled water or fresh/brackish water, and from inside using only distilled water, in order to collect all the material stacked among the mesh. Larger pieces of biological material, including e.g., leaves, bugs, larger algae or wood are picked out of the samples with metal tweezers and carefully rinsed on a metal sieve (< 330 µm). Macro-plastics are picked out and rinsed in the same way, but instead of discarding them, they could be counted and stored for further analysis. It is important to separate macro-plastic from the sample in order to avoid fragmentation.

66. The samples can then be stored in refrigerators (but not in freezers), protected from light and heat. It is possible to add a fixative (i.e., 70% ethyl alcohol), solely in order to prevent the decomposition of the organic matter present (e.g., zooplankton, phytoplankton, etc.), which would release unpleasant odors during the analysis of the samples. This procedure it is not suggested because it can change the microplastic colour.



Figure 10: Microplastic and organic matter collected in a metal sieve just after the sampling (Photo: © Christos Ioakeimidis, UNEP/MAP).

5.1.6 Laboratory Analyses of Samples Collected at Sea:

67. The analysis is aimed at identifying and quantifying the different microplastic particle (as non-degradable) found present in the sample/s.

5.1.6.1 Cross Contamination

68. All laboratory equipment should be ensured to be made of glass or metal as much as possible in order to prevent the contamination of the sample, with microplastic particles deriving from the potential plastic equipment, as well as to avoid microplastic fragments from sticking to the walls of the equipment. To avoid this carefully rinsing of the equipment with distilled water should be ensured. The use of distilled water during all the wash/rinsing steps should be ensured. during all laboratory steps. Furthermore, particular attention must be paid to the cleaning of the working area in order to avoid contamination of the sample with microplastic particles, mainly fibers, being present in the atmosphere or being generated from relevant plastic equipment. To this extent, important precautions should be taken to limit the risk of contamination such as:

- a) Avoid wearing synthetic clothes which could release plastic fibres (such as fleece or stretch fabrics in lycra - polyamide) during the laboratory analyses and wear pure cotton clothes. Always wear a 100% cotton lab coat.
- b) Avoid the exposure of the sample into the atmospheric air, and thus ensuring to cover the corresponding laboratory spaces to avoid contamination.
- c) Do not leave windows open while analysing the samples.
- d) Reduce personnel in the lab during operation.
- e) Use of laminar flow cabinet is recommended.
- f) Cover the petri dish during the first stereomicroscopic analysis with a glass.
- g) Place a damp filter paper in a petri dish in the working area for a blank control in every step representing the whole process of treatment.

5.1.6.2 Equipment at the Laboratory

69. The following equipment will be required during the laboratory analysis:

<u>Requirement:</u>	<u>Optional:</u>
<ul style="list-style-type: none"> • 5 mm metal sieve; • 300 µm metal sieve; • Drying oven; • Filtration device; • Petri dishes (glass); • Jars/Beakers (glass); • Tweezers; • Distilled water; • Micrometre; • Stereoscope. 	<ul style="list-style-type: none"> • <i>Micrometer;</i> • <i>Additional sieves for size classes;</i> • <i>Oxygen Peroxide or Potassium hydroxide;</i> • <i>Drying oven or hot plat or hot bath;</i> • <i>Laminar flow cabinet;</i> • <i>Vacuum pump system and fiber glasses membrane;</i> • <i>Hot needle, optical microscope, FT-IR or RAMAN spectroscopy.</i>

5.1.6.3 Five Steps at the Laboratory

70. The following **five steps** should be followed during the analysis of the samples:

71. Step 1: Wet Sieving:

- a) Pour the sample through a stacked arrangement of 5mm and 330 µm metal mesh sieves.
- b) *Optional: in order to subdivide the items in different size classes it is possible to stack additional sieves (e.g., 1 mm).*
- c) Pinse the container where the samples are stored several times with distilled water, in order to recover all the microplastics.
- d) The fraction consisting of plant or animal residues larger than 5 mm (retained by the sieve with the larger mesh) must be thoroughly rinsed with distilled water.
- e) *Optional: In the presence of large quantities of organic matter, incubate samples on hot plate, hot bath, or oven ($\leq 40^{\circ}\text{C}$) adding supplementary 15% H_2O_2 or KOH 10% to the sample while evaporate, until all organic matter is digested. Be careful not to exceed 40°C degree.*
- f) For the digestion process, the jars with the collected samples should be kept at room temperature for 5 days or less according to the digestion rate. Jars should be covered with aluminum foil or glass dish during the digestion processes.

- g) *Optional: The digested matter can be filtered on GF/C fiber glasses membrane under vacuum pump, rinse the funnel several time and the membrane with distilled water to remove the organic matter.*

72. Step 2: Transfer Sieved Solid Material:

- a) Once the sample is filtered, transfer all solids collected in the 330 µm sieves into a Petri dish with the help of a spatula and minimum rinsing with a squirt bottle containing distilled water.
b) Ensure all solids are transferred into the glass jars.

73. Step 3: Visual Sorting of Samples:

- a) Place the Petri dish under the stereomicroscope and proceed with the identification of microplastics. For this, plastic items are counted through visual sorting of the sample, and it is recommended to move the Petri dish top-down from the left to the right and vice versa, to facilitate the particle count, perform two rounds of visual sorting under the stereomicroscope
b) Filaments with a length > 5mm must still be counted.
c) In case of suspected micro-items, hot needle or optical microscope or spectroscopy equipment should be used to detect if it is plastic material.
d) *Optional: For size categorization and in order to subdivide the collected items in different size classes put a sheet of graph paper under the Petri dish, this procedure can also be performed with a micrometre inserted in the eyepiece or with an image analysis software (i.e., Image J) which helps in the measurement of identified microplastics.*
e) During the entire visual sorting of samples, a blank control will be done for this, an uncovered Petri dish with a filter inside it will be left beside the stereomicroscope and will be inspected for potential airborne contamination after each sample. Colour and shape of identified particles in the blanks will be recorded. If the blank is contaminated, micro-litter items with similar characteristics (e.g., shape, colour, polymer type), the amount of this micro-items should be excluded from the results of the same bath.

74. Step 4: Categorization and Classification:

- a) The identified microplastic particles should be categorized and classified.
b) The microplastic particles which are identified in the glass Petri dish should be divided and counted based on the shape (i.e., fiber, filament, film/sheet, fragment granule, pellet, foam) and colour (Figure 11).
c) Types of shapes used in microplastics characterization:
i. Fiber: only from textile. They are very flexible with different thicknesses and colours. They can be made by natural or synthetic material.
ii. Filament: filiform element elongated, threadlike, thin, and less flexible than a fiber, made by artificial polymer (e.g., fishing line).
iii. Film/sheet broken soft plastic piece as foil, they are thinner and more flexible; than fragments (e.g., pieces of plastic bags).
iv. Fragment: broken and hard plastic piece, thick, with an irregular shape.
v. Granule: spherical shape, with a regular round shape bead.
vi. Pellet: only from industrial origin, irregular, round shapes, and normally bigger in size, than granule.
vii. Foam: soft consistency irregular or spheroid shape (e.g., polystyrene, rubber silicone).

75. Attention should be given in distinguishing Fibres (from textile) and Filament (threadlike artificial polymer: i.e., fishing line), as the first one should pass through a 330 μm mesh and are more susceptible to originate from airborne contamination.

76. Figure 12 highlights the differences between Fibres and Filament, while fibers are generally thinner in diameter, with frayed edges and it is often ending in helical winding. In addition, the fibers, when approached with a needle bend and deform (Figure 12: 1 red fiber and 2 blue fibers).

77. On the other side, filaments have generally a well-defined shape: cylindroid with clear margins, and the colour is more uniform. Furthermore, the filaments are stiffer than the fibers and less deformable (Figure 12: 2 filaments in blue).

78. The colour of each microplastic particle should be recorded based on the following approach: white, black, red, blue, green, and other colour (Figures 13 and 14). In case of biofouling or degradation, yellow must be included in the white category and brown in the black category, whereas orange and pink in the red category. The "*other colour*" category includes all the remaining colours which cannot be specified, or in case an item has different colour on two sides. Furthermore, when a fragment is made up of two different colours depending on the side this must be always included in the "*other colour*" category. A more specific differentiation is possible when it has relevance for a specific purpose (e.g., project etc.)

79. Finally, for each colour identified, the transparency must be specified, with the proceeding column of the data file indicating if the pieces are opaque or transparent.

80. Step 5. Reporting units

The reporting units for microplastics abundance from water samples are:

Option 1: Number of Microplastics per Surveyed Area
(No, Particles / km^2 | No, Particles/ m^2)

Option 2: Number of Microplastics per Volume
(No, Particles / m^3)

81. Information referring to shape and colour of microplastics identified, are useful for source identification.

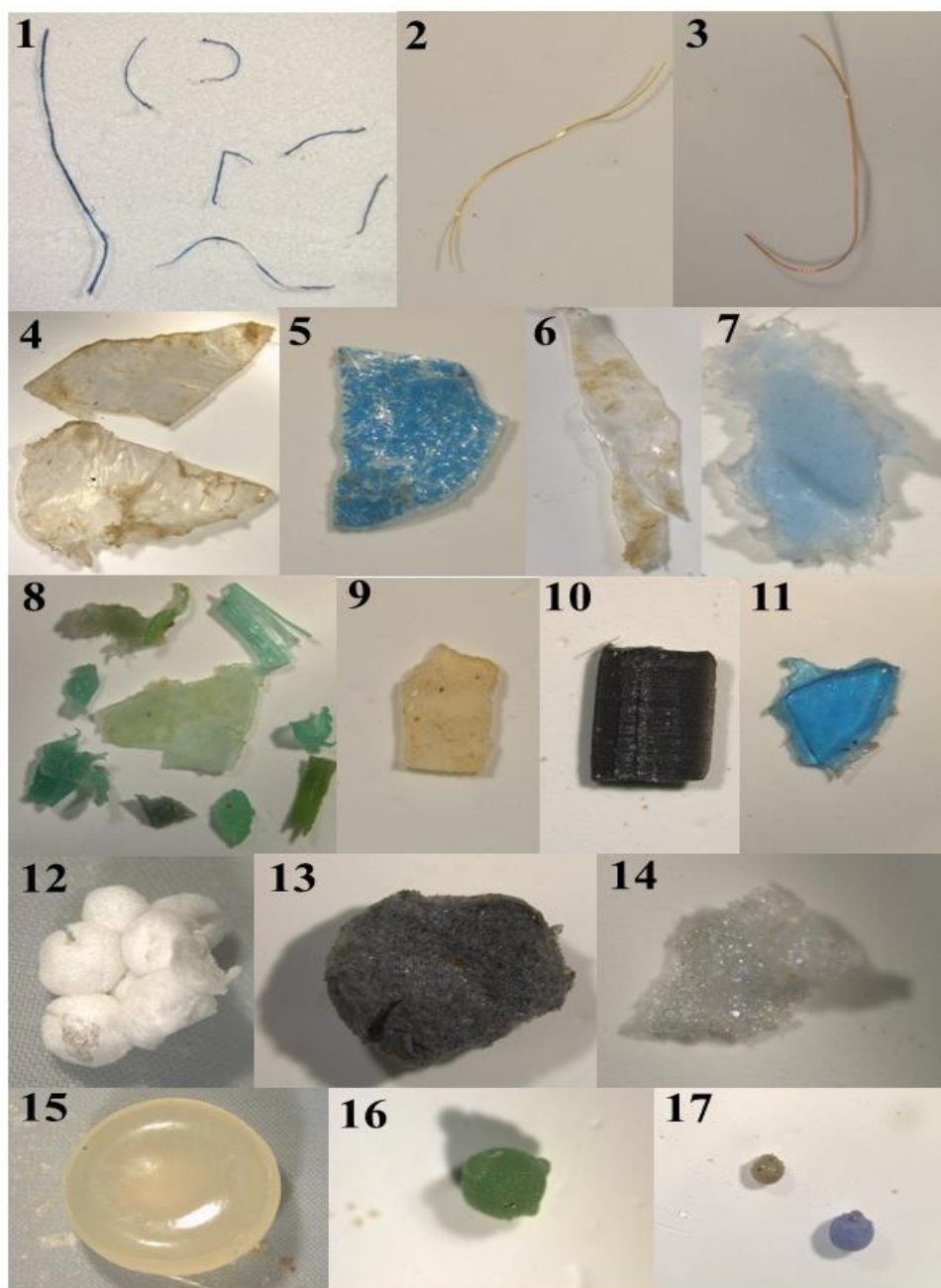


Figure 11: Common shapes of microplastics. (1: fibers, 2-3: filaments, 4-7: films, 8-11: fragments, 12-14: foams, 15: pellet, 16-17: granule) (Photo: © Ülgen Aytan, Turkey).



Figure 12: Differences between fiber and filament microplastics (Photo: © Marco Matiddi, Italy).

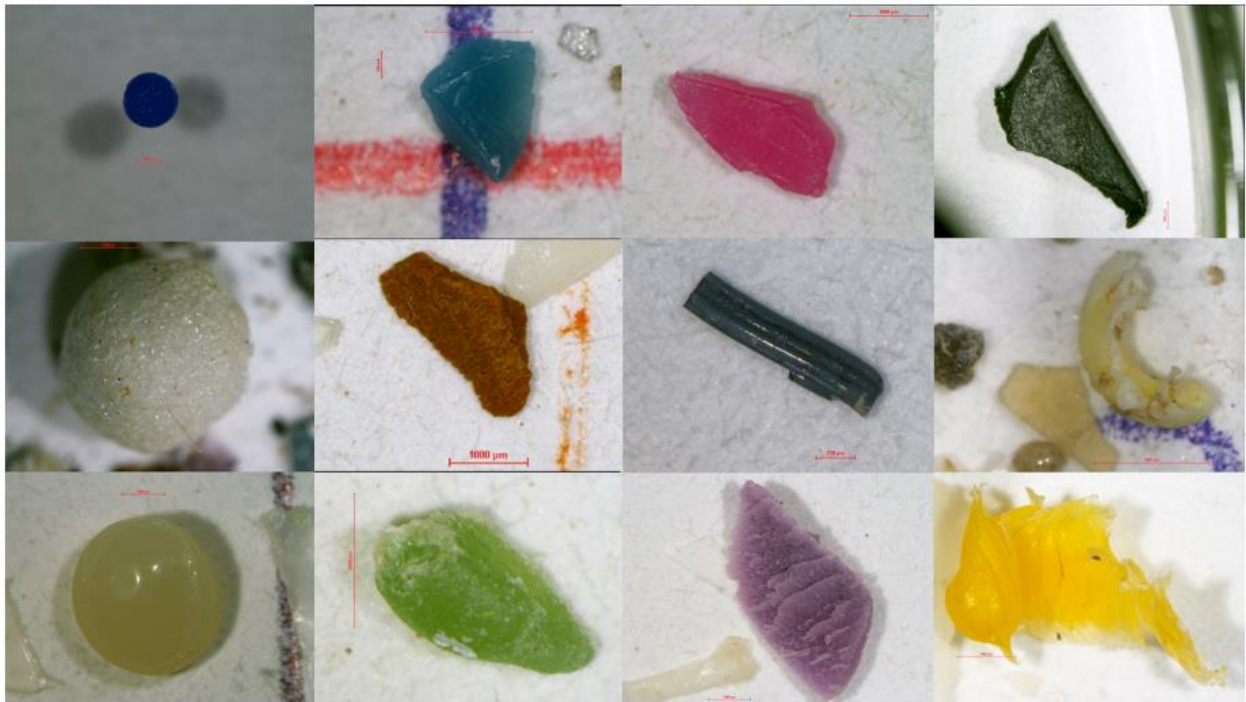


Figure 13: Different colors of microplastics (Photo: © Ofrat Rave, Israel)

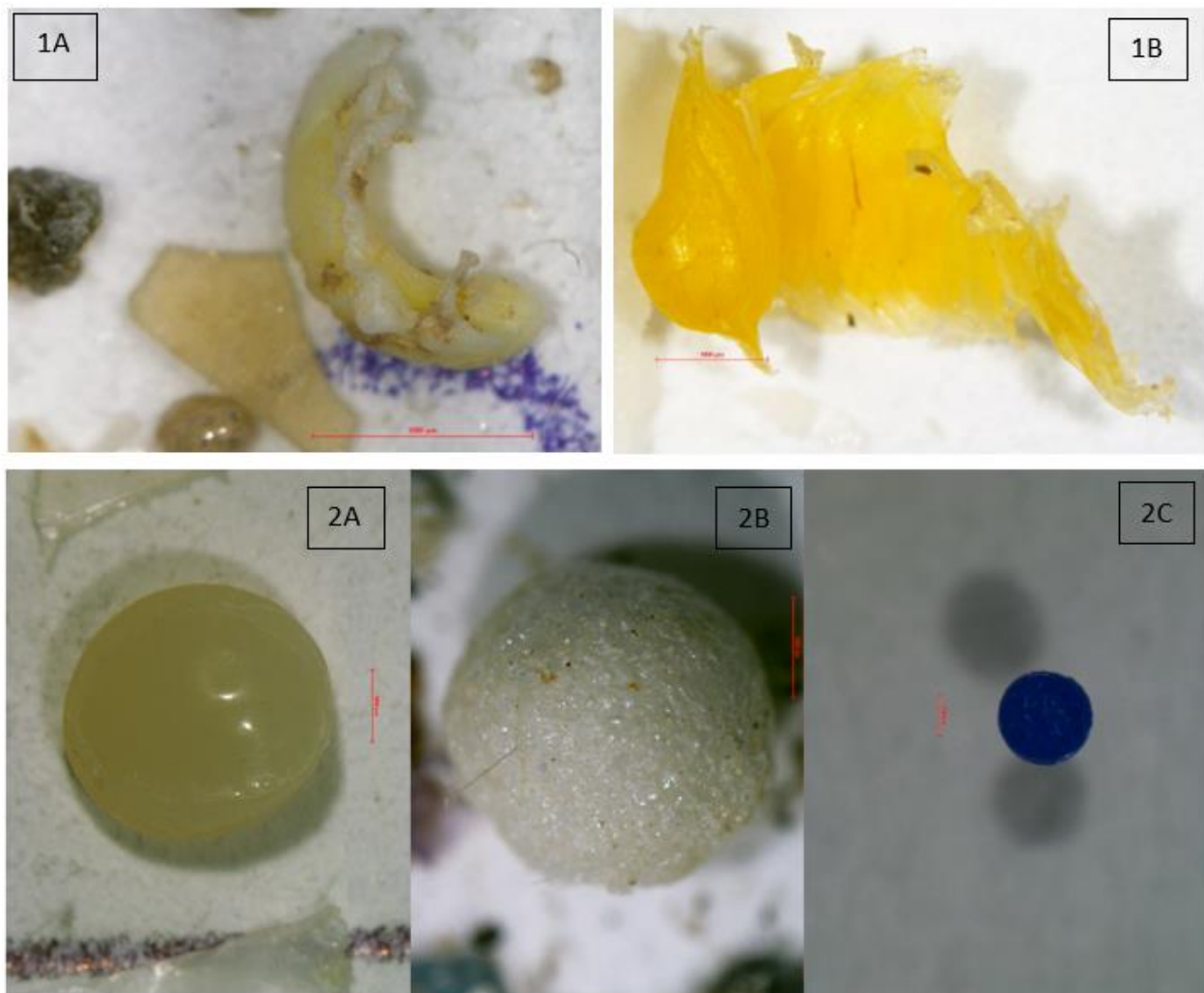


Figure 14: Examples of color categorization for microplastics: [1A] a colored microplastic degraded because of biofouling that should be regarded as “white”; [1B] a yellow-colored microplastic which should be considered as “other color”; [2A] a pellet which should be considered as “white” (scale bar 1000 μ m); [2B] A white-colored foam (scale bar 1000 μ m); [2C] a colored blue granular (scale bar 250 μ m). (Photo: © Ofrat Rave and Yael Segal Israel)

5.1.7 Keynotes

82. Spectral optical procedures such as Fourier-transform Infrared Spectroscopy (FT-IR) or Raman spectroscopy are very important techniques to differentiate microplastics from non-plastic materials and further verifying plastic polymers which is also necessary for obtaining useful information regarding sources of sea surface plastics. These instruments can perform counting, shape measurement and material identification simultaneously but they are expensive so not all laboratories can afford them. For laboratories that have the possibility to use them, in the case that time and resources do not allow analysis of all samples, the recommendation is to proceed with a representative spectroscopic analysis for a subsample of 10% of the total, choosing the suspected microparticles to verify visual identification.

83. A list of additional physical and chemical parameters of the water column are recommended (non-mandatory) by means of a multiparametric, integrated sampling, which are hereunder listed:

- a) Depth (m);
- b) Temperature (°C);
- c) Salinity (psu);
- d) Oxygen (dissolved oxygen – percentage of saturation);
- e) pH; and
- f) Transparency (m).

5.2 Sampling microplastics in the water column with the use of a water pump and filtration system

5.2.1 Water pump and filtration system properties:

84. The filtration system may consist of the following parts: water pump (gasoline or electric), PVC or coated pipes, flow meter, basket/cage for retaining larger particles (1-2 cm) – prefiltration system, filtration system or stainless-steel sieve/s (100 µm and/or 333 µm), a lead weight (for keeping the filtration in place), ropes from natural materials. It should be noted that the use of 1-2 cm basket/cage before the filtration may remove an important size group of particles (1-5 cm) from the total count. This size group might be significant in rivers, reaching up to or exceeding 50% of the sample.

85. Sieve or filter mesh size: for filtration of the river surface/water column, a mesh size of 300 or/and 100¹² µm (optional) is suggested. The 300 µm filter should be above 100 µm, in this way the larger mesh filter retains larger particles, and the fine filter (100 µm) retains smaller particles.

86. Water pump characteristics:

- a) Small size and light weight;
- b) Enough capacity for representative sampling (at least 130 l/min or 7.8 m³/h or higher);
- c) To be as quiet as possible;
- d) Have as the highest possible autonomy of operation with a full tank;
- e) To pump water from a height of 10 m and above;
- f) Attach a filter system preferably of 1000µm 300µm and 100µm¹³ (Figure 15);
- g) Should have a mounted flow meter (Figure 26).

87. The pumping system (impeller) should not interfere with particles and possibly alter their properties. Pumps for large diameter particles should be used.

¹² The use of the 100 µm will retain in the sample nano plastics, whereas the 300 µm will retain in the sample micro plastics.

¹³ The different filters are attached in a custom-made way (Figure 15). Additional filter sizes can be also used depending on the condition of the river and the capacities of the respective laboratories.

88. Water pumps have their advantages and disadvantages as presented hereunder:

Advantages:

- a. Samples large volumes of water (minimum of 1 m³ of water)
- b. Relatively effortless
- c. Allows the choice of different mesh size (suggested 100 – 300 - 1000 μm)
- d. Use of three replicate samples
- e. Easy calculation of concentration, expressed in unit: number of items/m³.

Disadvantages:

- a) Requires necessary equipment and technical expertise to prepare the installation (not available in the market);
- b) Requires fuel/batteries to work;
- c) Potential contamination by the apparatus¹⁴;
- d) May fragment and break pieces and particles into smaller sized pieces/particles¹³;
- e) May be difficult to carry between sampling locations.

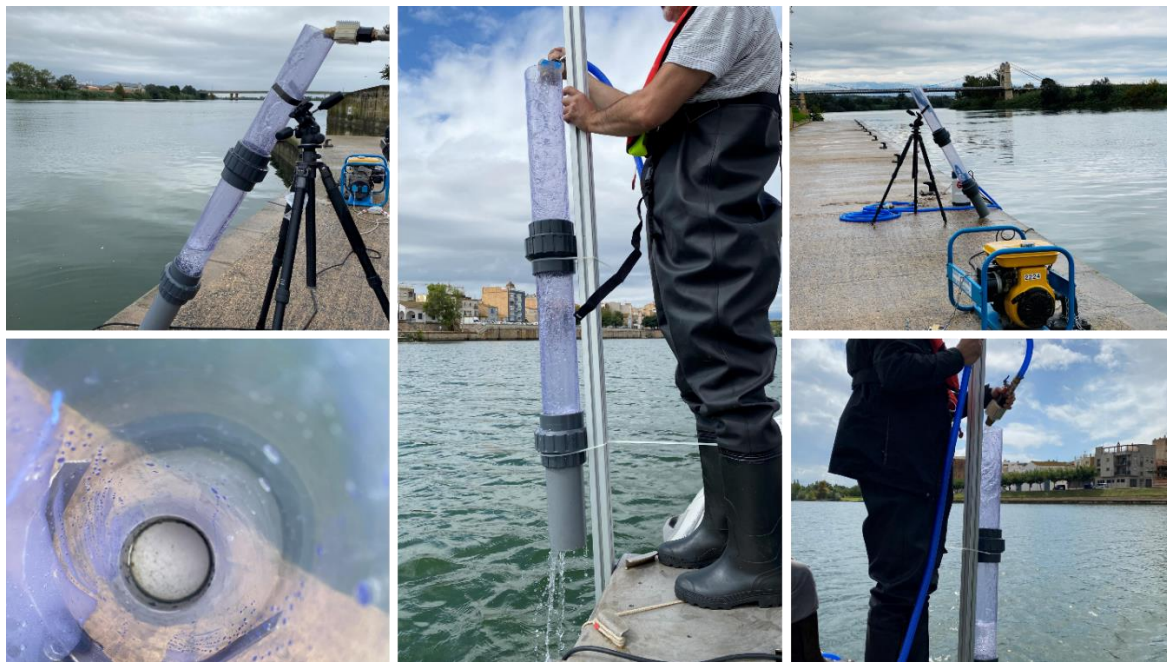


Figure 15: Custom-made set up for the deployment of the series of different filters during the sampling operations (© CEDEX,2021).

¹⁴ Thus, only pumps that avoid this should be used



Figure 26: A small and light weight water pump with a mounted flow meter (© IWRS, 2022).

5.2.2 Use of water pumps in rivers

89. When the use of manta net for sampling microplastics in the river surface is not possible due to high loads of organic matter, or other reasons, the use of water pumps is a viable and suggested option yielding very good results (Prata et al. 2018; Tamminga et al. 2019; Bordós et al. 2018). The use of water pumps is a static sampling approach allowing sampling from an anchored boat, riverbank, or stable structures (e.g., bridges etc.) (Figure 17) (Bordós et al. 2018; Prata et al. 2018).



Figure 17: Sampling microplastics from a bridge, using a water pump (© IWRS, 2020).

90. When addressing sampling, different approach is applied attributed to the differences in density of fresh and saltwater environments, which may respectively lead to different distribution patterns for microplastics in the water column (i.e., generally, microplastics will be deeper in the water column when in freshwater environment). To this extent, depth and location may need to be adjusted depending on the sampling location and salinity (Prata et al. 2018).

91. Pump sampling consist of pumping water manually or using a motor through an inline filter. With the use of water pumps, the water samples can be taken from different depths with different volumes. Due to the high variability of microplastic spatial distribution, the covered sampling area is limited and using a pump may not be representative. Therefore, taking multiple replicates is suggested (Zhang et al. 2018). However, pumps can be used to collect large volumes of water, which may be an advantage in areas where the density of microplastics is suspected to be low (Crawford and Quinn 2017).

92. In comparison to the use of manta net and because in fresh and/or brackish waters environments, microplastics are present along the whole water column¹⁵, the use of water pumps can provide more reliable and representative results. In addition, and for future consideration, monitoring with waters pumps could also support/complement or be implemented in parallel with the sampling of microplastics in the sediment of the rivers.

- a) To this date, there are no detailed guidelines or a common approach for monitoring floating microplastics using water pumps in riverine areas, and especially in surface fresh waters at Mediterranean level, and the present guidelines aim to address relevant aspects and provide guidance to concerned Mediterranean laboratories, institutes, and public authorities. Few studies have presented water pump sampling schemes that were based on a submersible or a jet pump, including stainless steel filters.
- b) Zhao et al., 2014 and Wang et al., 2017 used low voltage pumps to filter freshwater through small mesh size (32-50 µm) stainless steel filters. They could only sample small water volumes, because of the small mesh size and possibly the characteristic of the lakes or estuaries. In the Baltic Sea, Setala et al. (2016) applied a high-performance submersible pump with 100 µm and 300 µm filters. These mesh sizes enabled them to filter 2 m³ of water, providing better representativeness. The number of microplastic particles was clearly higher with the finer mesh size filter, especially in the case of plastic fibres. Fischer et al., 2016 also highlight that smaller particle are represented in greater abundance. From the above 3 options, the use of high-performance submersible pump with the use of 2 filters one of which of 100 µm seems to provide more representative results.

5.2.3 Designing a monitoring campaign

93. A water pump should be used in the main riverine area and thus should be deployed in such way ensuring that surface water is collected. For some cases the design of the monitoring campaign can be similar with the one applied when using the manta net. In this regard, the content of chapter 5.1.3 of is valid and of great use also when applying water pumps.

94. Sampling should be carried out preferably at 3 stations located at different distances from the river mouth. The locations of the stations should be considered *vis-à-vis* the potential pollution sources (e.g., cities, wastewater treatment facilities, industrial installations, etc.). Among the three (3) stations, it is proposed, if possible, that one (1) station is used as “control” station (e.g., close to the water spring of the river or the tributary).

¹⁵ Because of low (or even no) salinity in fresh and/or brackish waters, microplastics are not explicitly concentrated in surface waters layers as it is the case at sea.

95. **Method for sampling:** Once the location is positioned, the Teflon or PVC hose with a lead weight and the filtration system is lowered from a bridge or a boat. To prevent clogging of the 300 µm mesh or/and 100 µm (optional) mesh size filter, a use of a basket above the system can be used (a 1 cm pre-filter). All sieves should be made of stainless steel. Pumping of water is linked with exceeded sampling time and effort. To obtain good representativeness it is recommended that at least 1000 litres (1 m³) are pumped, three (3) times, through the series of connected filters. Larger volumes of water (more than 1000 litres) could be also considered, and particle count should be calculated to 1m³. Water quantity should be measured by a flowmeter and the depth of the deployment of the hose/tube should be specified and recorded.

96. Based on the experience of the Institute for Water of the Republic of Slovenia (IWRS) from relevant samplings in rivers, two main separation steps are proposed:

- a) **First Step:** Entails a reduction step that allows to reduce clogging with organic matter with the use of a steel basket (bigger mesh size – e.g., 1 cm) (Figure 18).
- b) **Second step:** Entails sampling through a filter system using fine mesh size stainless sieves or filters (300 µm and/or 100 µm) (Figure 193). This filter system is within steel basket (Figure 18).

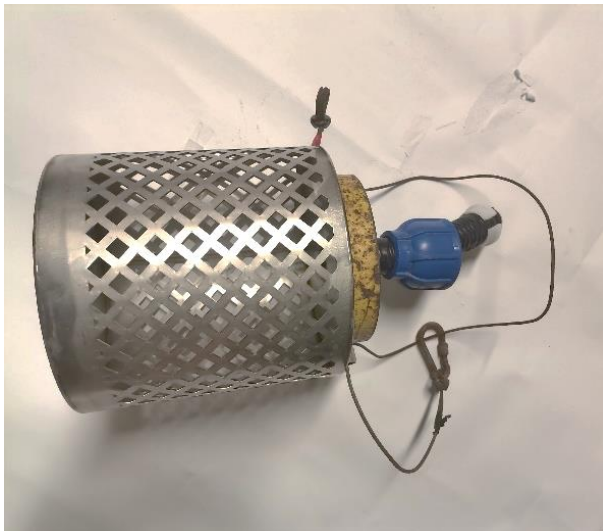


Figure 18: Use of a steel basket for prevention of clogging the sampling device (© IWRS, 2022).



Figure 193: A PVC hose with a filter system with a stainless-steel sieve (100 µm) (© IWRS, 2022).

97. **GPS Coordinates:** *Same as in Chapter 5.1.3.*

98. **Position of the survey stations:** *Same as in Chapter 5.1.3.*

99. Multiple survey stations should be set at the river (e.g., one located at the river mouth, one before and one after an urban settlement; or one before and one after a wastewater treatment facility). In addition, sampling depth comprising of the distance from surface and from the bottom should be included.

100. Replicates: At least 3 replicates per location are proposed with a minimum of 2-3 different sampling sites (locations). For example, one replicate at the river mouth, one before and one after an urban settlement; or one before and one after a wastewater treatment facility. Moreover, different seasons should be considered when designing the sampling campaign (e.g., minimum during summer and winter).

101. Density of microplastic particles in the river surface: The calculation of the amount of microplastics should be expressed in number of microplastic particles per cubic meter (m^3) of filtered water:

The reporting units for microplastics abundance from water samples are:

Option 1: Number of Microplastics per Volume
(No, Particles / m^3)

5.2.4 Sample Collection and Storage

Same as in Chapter 5.1.5.

5.2.5 Laboratory Analysis of Samples collected using a water pump

Same as in Chapter 5.1.6.

5.2.6 Keynotes

Same as in chapter 5.1.7.

5.2.7 Sampling floats

102. As riverine (micro-)litter fluxes can be expected to be highly variable over time, time integrating sampling may be beneficial. This may be obtained by long time deployment of a pump/filtration system, or by use of a sampling float. Such a float could be a catamaran-like structure that has a sampling mesh between the hulls.

103. Depending on the size (intake width), and the sampling grid mesh size, different litter categories can be targeted. Typically such a system could collect micro- and meso-litter with a $300\ \mu\text{m}$ stainless steel mesh, though the riverine load with plant debris and algae must be tested in order to allow efficient use of such a system. On the river Rhine in Germany, such a system is deployed as a pilot project¹⁶. A smaller version with an agreed design may be produced in larger numbers and contribute to comparable monitoring.

104. While permits and security concerns regarding the deployment of such a float must be considered, they enable time integrating sampling and result in more representative results. They are independent from operators and thus can also sample for extended periods and at night.

¹⁶ <https://krake.koeln/projekte/muellfalle/>

6. Summary of Advantages and Disadvantages for the proposed Methodologies

105. During the deliberations of the Online Working Group on Marine Litter (OWG-ML), fruitful and thorough discussions took place by the respective experts for all four (4) methodologies that are proposed and included in the present document. Further to the experts advice and recommendations, MED POL has extracted and reflected under the table hereunder the advantages and disadvantages of the respective methodologies towards providing guidance to the respective technical personnel of the IMAP competent institutes and laboratories, especially when concerning the selection of a methodology.

Methodology	Advantages	Disadvantages
Visual Monitoring (Chapter 4.1)	<ul style="list-style-type: none"> a) It provides a good indication and collects information on the number of floating litters observed in a given period of time b) Cheap and easy method when observers are used. 	<ul style="list-style-type: none"> a) Specific installations are required when observers are used (e.g., bridge with height above 10m). b) Resources are required (money and knowledge) when cameras are used, including the use of software. c) Difficult to monitor for several hours (tiredness for the case of observers). d) Litter may travel under the surface and thus are not detected. e) It is not feasible to count in storms/high waters when most of the waste is transported to the sea. f) Monitoring is possible only when rivers are in a “calm” status. g) Difficult identification of certain marine litter items (e.g., white plastic particles can be mistaken for white paper particles), as well as of the items closer to the lower size limit (2.5-3 cm).
Macro-litter on Riverbanks (Chapter 4.2)	<ul style="list-style-type: none"> a) Cheap in operation and quick data acquisition. b) Harmonization of beach litter items through the use of the MED POL list for beach marine litter items. c) No special equipment is required. 	<ul style="list-style-type: none"> a) Difficulty to sample the full 100 m stretch. b) Extrapolation (from 10m to 100m) distorts data consistency and respective findings. c) Collection and calculation of marine litter that was not yet transported to the sea.
Use of Manta Net (Chapter 5.1)	<ul style="list-style-type: none"> a) Easy installation and sampling. b) Good level of knowledge for this sampling technique around the Mediterranean. c) Very good link with the UNEP/MAP Guidelines for Monitoring Floating Microplastics. d) Integration with the monitoring stations for floating microplastics. e) Comparability with the data from the sea surface. 	<ul style="list-style-type: none"> a) Sampling outside of the river gradient, so outside of the river structure. b) When sampling micro-litter on the river surface many particles may be missed from the sampling due to lack of salinity (micro-litter floats in the entire water column). c) The manta net may collect a lot of organic material which may results in acute clogging or making laboratory analysis difficult and time consuming.

Methodology	Advantages	Disadvantages
Use of Water Pumps (Chapter 5.2)	<ul style="list-style-type: none"> a) Different depths can be pumped. b) 1m³ or more can be pumped (all results should be converted to number/m³). c) If the pump is small, it is easy to transport it. 	<ul style="list-style-type: none"> a) Does not provide information on floating microplastics (sampling is conducted in the water column), unless equipped with a surface inlet system. b) Possible fragmentation of particles due to the pump (avoid using pumps that contain blades). c) Extrapolation may give wrong assessment findings/results (i.e., when less than 1m³ is pumped). d) Limitations on pumping due to the power of the pump (pumping height/length)

References

- Abeynayaka, A., Kojima, F., Miwa, Y., Ito, N., Nihei, Y., Fukunaga, Y., Yashima, Y., & Itsubo, N. (2020). Rapid sampling of suspended and floating microplastics in challenging riverine and coastal water environments in Japan. *Water (Switzerland)*, 12(7).
- Arcangeli, A., David, L., Aguilar, A., Atzori, F., Borrell, A., Campana, I., Carosso, L., Crosti, R., Darmon, G., Gambaiani, D., Di-Méglio, N., Di Vito, S., Frau, F., Garcia-Garin, O., Orasi, A., Revuelta, O., Roul, M., Miaud, C. et Vighi, M. (2020). Floating marine macro litter: density reference values and monitoring protocol settings from coast to offshore. Results from the MEDSEALITTER project. *Marine Pollution Bulletin*, Vol. 160, 111647, doi:10.1016/j.marpolbul.2020.111647
- Baini, M., Fossi, M. C., Galli, M., Caliani, I., Campani, T., Finoia, M. G., & Panti, C. (2018). Abundance and characterization of microplastics in the coastal waters of Tuscany (Italy): The application of the MSFD monitoring protocol in the Mediterranean Sea. *Marine Pollution Bulletin*, 133, 543–552.
- Belletti, B., Garcia de Leaniz, C., Jones, J., Bizzi, S., B'orger, L., Segura, G., et Zalewski, M. (2020). More than one million barriers fragment Europe's rivers. *Nature* 588 (7838), 436–441.
- Bordós, G., Urbányi, B., Micsinai, A., Kriszt, B., Palotai, Z., Szabó, I., ... Szoboszlai, S. (2018). Identification of microplastics in fish ponds and natural freshwater environments of the Carpathian basin, Europe. *Chemosphere*. doi:10.1016/j.chemosphere.2018.10.110.
- Braun, U., Jekel, M., Gerdts, G., Ivleva, N., and Reiber, J. (2018). Discussion Paper Microplastics Analytics. Sampling, Preparation and Detection Methods. Retrieved from <https://bmbf-plastik.de/en/publication/discussion-papermicroplastics-analytics>.
- Bruge, A., Barreau, C., Carlot, J., Collin, H., Moreno, C., Maison, P. 2018. Monitoring litter inputs from the Adour River (Southwest France) to the marine environment *J. Mar. Sci. Eng.* 6, 24p.
- Cedre. 2022. Construction du réseau national de surveillance des macrodéchets issus des bassins hydrographiques, bilan des actions 2020-2021. Rapport d'étude. (In french).
- Cole, M., Webb, H., Lindeque, P. K., Fileman, E. S., Halsband, C., and Galloway, T. S. (2014). Isolation of microplastics in biotrich seawater samples and marine organisms. *Scientific Reports*, 4(1), 4528.
- Crawford, C. B., and Quinn, B. (2017). Microplastic identification techniques. *Microplastic Pollutants*, 219–267. doi:10.1016/b978-0-12-809406-8.00010-4.
- Crosti, R., Arcangeli, A., Campana, I., Paraboschi, M., & González-Fernández, D. (2018). 'Down to the river': amount, composition, and economic sector of litter entering the marine compartment, through the Tiber river in the Western Mediterranean Sea. *Rendiconti Lincei. Scienze Fisiche e Naturali*, 29(4), 859-866
- Curmi, M. et Axiak, V. (2021). Extended study on floating litter in Malta's coastal waters (Central Mediterranean). *Marine Pollution Bulletin*, Vol. 166, 112200, doi:10.1016/j.marpolbul.2021.112200
- Currie, J.J., Stack, S.H., McCordic, J.A. et Kaufman, G.D. (2017). Quantifying the risk that marine debris poses to cetaceans in coastal waters of the 4-island region of Maui. *Marine Pollution Bulletin*, Vol. 121, pp. 69–77.
- Devriese, L. I., van der Meulen, M. D., Maes, T., Bekaert, K., Paul-Pont, I., Frère, L., et al. (2015). Microplastic contamination in brown shrimp (*Crangon*, Linnaeus 1758) from coastal waters of the Southern North Sea and Channel area. *Marine Pollution Bulletin*, 98(1), 179–187.
- Dhivert, E., Phuong, N.N., Mourier, B., Grosbois, C., et Gasperi, J. (2022). Microplastic trapping in dam reservoirs driven by complex hydrosedimentary processes (Villerest Reservoir, Loire River, France). *Water Research* 225 (2022) 119187. <https://doi.org/10.1016/j.watres.2022.119187>.
- Falkenmark, M., Folke, C., et Ripl, W. (2003). Water: the bloodstream of the biosphere. *Philos. Trans. R. Soc. Lond. Ser. B Biol. Sci.* 358 (1440), 1921–1934.

- Fischer, E. K., Paglialonga, L., Czech, E., Tamminga, M. (2016): Microplastic pollution in lakes and lake shoreline sediments: A case study on Lake Bolsena and Lake Chiusi (central Italy). *Environ Pollut* 213 pp. 648-657. <https://doi.org/10.1016/j.envpol.2016.03.012>.
- Frias, J.P. and Nash, R., (2019). Microplastics: Finding a consensus on the definition. *Marine pollution bulletin*, 138, pp.145-147.
- Galgani, F., Hanke, G., Werner, S., Oosterbaan, L., Nilsson, P., Fleet, D., Kinsey, S., Thompson, R., van Franeker, J., Vlachogianni, T., Scoullou, M., Mira Veiga, J., Palatinus, A., Matiddi, M., Maes, T., Korpinen, S., Budziak, A., Leslie, H., Gago, J., Liebezeit, G. 2013. Guidance on Monitoring of Marine Litter in European Seas. EUR 26113 EN, Publications Office of the European Union, Luxembourg, ISBN 978-92-79-32709-4, doi: 10.2788/99475.
- Geraeds, M., van Emmerik, T., de Vries, R., and bin Ab Razak, M. S. (2019). Riverine Plastic Litter Monitoring Using Unmanned Aerial Vehicles (UAVs). *Remote Sensing*, 11(17).
- González-Fernández, D., Cózar, A., Hanke, G. et al. Floating macrolitter leaked from Europe into the ocean. *Nat Sustain* 4, 474–483 (2021). <https://doi.org/10.1038/s41893-021-00722-6>
- González, D., Hanke, G., Tweehuysen, G., Bellert, B., Holzhauser, M., Palatinus, A., Hohenblum, P., and Oosterbaan, L. (2016). Riverine Litter Monitoring - Options and Recommendations. MSFD GES TG Marine Litter Thematic Report; JRC Technical Report; EUR 28307; doi:10.2788/461233.
- González-Fernández, D., Hanke, G., and the RiLON network, Floating Macro Litter in
Grill, G., Lehner, B., Thieme, M., Geenen, B., Tickner, D., Antonelli, F., et Zarfl, C., (2019). Mapping the world's free-flowing rivers. *Nature* 569 (7755), 215–221.
- European Rivers - Top Items, EUR 29383 EN, Publications Office of the European Union, Luxembourg, 2018, ISBN 978-92-79-96373-5, doi:10.2760/316058, JRC108172
- Hidalgo-Ruz, V.; Gutow, L.; Thompson, R.C.; Thiel, M. Microplastics in the marine environment: A review of the methods used for identification and quantification. *Environ. Sci. Technol.* 2012, 46, 3060–3075.
- JRC, (2013). Guidance on Monitoring of Marine Litter in European Seas. Prepared by: Galgani F, Hanke G, Werner S, Oosterbaan L, Nilsson P, Fleet D, Kinsey S, Thompson RC, van Franeker J, Vlachogianni Th, Scoullou M, Veiga JM, Palatinus A, Matiddi M, Maes T, Korpinen S, Budziak A, Leslie H, Gago J, Liebezeit G. Scientific and Technical Research series, Luxembourg: Publications Office of the European Union, EUR 26113 EN.
- Löder, M. G. J., Kuczera, M., Mintenig, S., Lorenz, C., and Gerdts, G. (2015). Focal plane array detector-based micro-Fouriertransform infrared imaging for the analysis of microplastics in environmental samples. *Environmental Chemistry*, 12(5), 563–581.
- Löder, M.G.J., Imhof, H.K., Ladehoff, M., Loschel, L.A., Lorenz, C., Mintenig, S. et al. (2017). Enzymatic purification of microplastics in environmental samples. *Environmental Science and Technology* 51(24), 14283-14292. <https://doi.org/10.1021/acs.est.7b03055> . Accessed 13 January 2021.
- Maes, T., Jessop, R., Wellner, N., Haupt, K., and Mayes, A. G. (2017). A rapid-screening approach to detect and quantify microplastics based on fluorescent tagging with Nile Red. *Scientific Reports*, 7(1), 44501.
- Manghi M., Manghi, G., Dodaro, G., Crosti R. (2022). Assessing riverine macro litter flux using free-floating trackers and a GIS automated data representation and analysis. 7th International Marine Debris Conference 18-23 September 2022, Busan, Republic of Korea.
- Marsalek J. (2003). Road salts in urban stormwater: an emerging issue in stormwater management in cold climates. *Water Sci. Technol.*, 48 (2003), pp. 61-70.
- MEDSEALITTER consortium (2019). Deliverable 4.6.1 – Common monitoring protocol for marine litter. https://medsealitter.interreg-med.eu/what-we-achieve/deliverable-database/detail/?tx_elibrary_pi1%5Blivable%5D=6774&tx_elibrary_pi1%5Baction%5D=show&tx_elibrary_pi1%5Bcontroller%5D=Frontend%5CLivable&cHash=3a505bc70229244a185e86ddb84f1fed.

- Norén F. & Naustvoll L. (2010). Survey of microscopic anthropogenic particles in skagerrak. TA. 2779. 1-20.
- OSPAR, 2020. [CEMP Guideline for marine monitoring and assessment of beach litter](#). EIHA(2) WP 20/01/04-Add.1.
- Prata, J.C., da Costa, J.P., Duarte, A.C. and Rocha-Santos, T., (2019). Methods for sampling and detection of microplastics in water and sediment: a critical review. *TrAC Trends in Analytical Chemistry*, 110, pp.150-159.
- Rech, S., Macaya-Caquilpan, V., Pantoja, J. F., Rivadeneira, M. M., Campodonico, C. K., and Thiel, M. (2015). Sampling of riverine litter with citizen scientists - findings and recommendations. *Environmental Monitoring and Assessment*, 187(6).
- Rødland E.S., Okoffo E.D., Rauert C., Heier L.S., Lind O.C., Reid M., Thomas K.V., Meland S. (2020). Road de-icing salt: Assessment of a potential new source and pathway of microplastics particles from roads. *Science of The Total Environment*, Vol. 738, 139352, <https://doi.org/10.1016/j.scitotenv.2020.139352>.
- Schirinzi, G. F., Köck-Schulmeyer, M., Cabrera, M., González-Fernández, D., Hanke, G., Farré, M., & Barceló, D. (2020). Riverine anthropogenic litter load to the Mediterranean Sea near the metropolitan area of Barcelona, Spain. *Science of the Total Environment*, 714.
- Schone Rivieren. 2017. [Handleiding Voor Monitoring](#). (Accessed April 21, 2020). (*In Dutch*).
- Setala, O., Magnusson, K., Lehtiniemi, M., Noren, F. (2016): Distribution and abundance of surface water microlitter in the Baltic Sea: A comparison of two sampling methods. *Mar Pollut Bull* 110 pp. 177-183. <https://doi.org/10.1016/j.marpolbul.2016.06.065>.
- Tagg, A. S., Harrison, J. P., Ju-Nam, Y., Sapp, M., Bradley, E. L., Sinclair, C. J., and Ojeda, J. J. (2017). Fenton's reagent for the rapid and efficient isolation of microplastics from wastewater. *Chemical Communications*, 53(2), 372–375.
- Tan, I. (2022). Preliminary Assessment of Microplastic Pollution Index: A Case Study in Marmara Sea. *Turkish Journal of Fisheries and Aquatic Sciences*, 22(7).
- Tammenga, M., Stoewer, S.-C., & Fischer, E. K. (2019). On the representativeness of pump water samples versus manta sampling in microplastic analysis. *Environmental Pollution*, 112970. doi:10.1016/j.envpol.2019.112970.
- Tramoy, R., Gasperi, J., Dris, R., Colasse, L., Fisson, C., Sananes, S., et al. (2019). Assessment of the Plastic Inputs from the Seine Basin to the Sea Using Statistical and Field Approaches. *Frontiers in Marine Science*, 6, 151.
- Uhlmann, D., Paul, L., Hupfer, M., and Fischer, R. (2011). 2.08 - Lakes and Reservoirs. In P. Wilderer (Ed.), *Treatise on Water Science* (pp. 157–213). Oxford: Elsevier.
- United Nations Environment Programme (2020). *Monitoring Plastics in Rivers and Lakes: Guidelines for the Harmonization of Methodologies*. Nairobi.
- UNEP/MAP, 2016. *Integrated Monitoring and Assessment Guidance*.
- van der Wal, M., M. van der Meulen, G. Tweehuysen, M. Peterlin, A. Palatinus, M. Kovač Viršek, L. Coscia and A. Kržan (2015). Identification and Assessment of Riverine Input of (Marine) Litter. Final Report for the European Commission DG Environment under Framework Contract No ENV.D.2/FRA/2012/0025 (SFRA0025).
- van Emmerik, T., Kieu-Le, T.-C., Loozen, M., van Oeveren, K., Strady, E., Bui, X.-T., et al. (2018). A Methodology to Characterize Riverine Macroplastic Emission into the Ocean. *Frontiers in Marine Science*, 5, 372. <https://doi.org/10.3389/fmars.2018.00372>.
- van Emmerik, T., Roebroek, C., de Winter, W., Vriend, P., Boonstra, M., and Hougee, M. (2020). Riverbank macrolitter in the Dutch Rhine–Meuse delta. *Environmental Research Letters*, 15(10), 104087.
- van Lieshout, C., van Oeveren, K., van Emmerik, T., & Postma, E. (2020). Automated River Plastic Monitoring Using Deep Learning and Cameras. *Earth and Space Science*, 7(8).

- Wang, W., Ndungu, A. W., Li, Z., Wang, J. (2017): Microplastics pollution in inland freshwaters of China: A case study in urban surface waters of Wuhan, China. *Sci Total Environ* 575 pp. 1369-1374. <https://doi.org/10.1016/j.scitotenv.2016.09.213>.
- Watkins L., McGrattan S., Sullivan P.J., et Walter, M.T. (2019). The effect of dams on river transport of microplastic pollution. *Science of the Total Environment* 664 (2019) 834–840. <https://doi.org/10.1016/j.scitotenv.2019.02.028>
- Wu, F., Wang, J., Jiang, S., Zeng H., Wu, Q., Chen Q., et Chen J. (2022). Effect of cascade damming on microplastics transport in rivers: A large-scale investigation in Wujiang River, Southwest China. *Chemosphere* 299 (2022) 134455. <https://doi.org/10.1016/j.chemosphere.2022.134455>
- Zhang, K., Gong, W., Lv, J., Xiong, X., et Wu, C. (2015). Accumulation of floating microplastics behind the three Gorges Dam. *Environ. Pollut.* 204, 117e123.
- Zhao, S., Zhu, L., Wang, T., Li, D. (2014): Suspended microplastics in the surface water of the Yangtze Estuary System, China: First observations on occurrence, distribution. *Mar Pollut Bull* 86 pp. 562-568. <https://doi.org/10.1016/j.marpolbul.2014.06.032>.

Annex I

MED POL List for Beach Marine Litter Items

Annex I: MED POL List for Beach Marine Litter Items

Value	Description	Macro-Category
G1	4/6-pack yokes, six-pack rings	Plastic/Polystyrene
G3	Shopping bags incl. pieces	Plastic/Polystyrene
G4	Small plastic bags (e.g., freezer bags incl. pieces)	Plastic/Polystyrene
G5	The part that remains from rip-off plastic bags	Plastic/Polystyrene
G7/G8	Drink bottles	Plastic/Polystyrene
G9	Cleaner bottles & containers	Plastic/Polystyrene
G10	Food containers incl. fast food containers	Plastic/Polystyrene
G11	Beach use related cosmetic bottles and containers (e.g., Sunblocks)	Plastic/Polystyrene
G13	Other bottles, drums and containers	Plastic/Polystyrene
G14	Engine oil bottles & containers <50 cm	Plastic/Polystyrene
G15	Engine oil bottles & containers >50 cm	Plastic/Polystyrene
G16	Jerry cans (square plastic containers with handle)	Plastic/Polystyrene
G17	Injection gun containers (including nozzles)	Plastic/Polystyrene
G18	Crates and containers / baskets (excluding fish boxes)	Plastic/Polystyrene
G19	Vehicle parts (made of artificial polymer or fiber glass)	Plastic/Polystyrene
G21/24	Plastic caps and lids (including rings from bottle caps/lids)	Plastic/Polystyrene
G26	Cigarette lighters	Plastic/Polystyrene
G27	Cigarette butts and filters	Plastic/Polystyrene
G28	Pens and pen lids	Plastic/Polystyrene
G29	Combs / hairbrushes / sunglasses	Plastic/Polystyrene
G30/31	Crisps packets/sweets wrappers/Lolly sticks	Plastic/Polystyrene
G32	Toys and party poppers	Plastic/Polystyrene
G33	Cups and cup lids	Plastic/Polystyrene
G34	Cutlery, plates and trays	Plastic/Polystyrene
G35	Straws and stirrers	Plastic/Polystyrene
G36	Heavy duty sacks (e.g., fertilizer or animal feed sacks)	Plastic/Polystyrene
G37	Mesh bags (e.g., vegetables, fruits and other products) excluding aquaculture mesh bags	Plastic/Polystyrene
G40	Gloves (washing up)	Plastic/Polystyrene
G41	Gloves (industrial/professional rubber gloves)	Plastic/Polystyrene
G42	Crab/lobster pots and tops	Plastic/Polystyrene
G43	Tags (fishing and industry)	Plastic/Polystyrene
G44	Octopus pots	Plastic/Polystyrene
G45	Mesh bags (e.g., mussels nets, net sacks, oyster nets including pieces and plastic stoppers from mussel lines)	Plastic/Polystyrene
G46	Oyster trays (round from oyster cultures)	Plastic/Polystyrene
G47	Plastic sheeting from mussel culture (Tahitians)	Plastic/Polystyrene
G49	Rope (diameter more than 1cm)	Plastic/Polystyrene
G50	String and cord (diameter less than 1 cm)	Plastic/Polystyrene
G53	Nets and pieces of net < 50 cm	Plastic/Polystyrene
G54	Nets and pieces of net > 50 cm	Plastic/Polystyrene
G56	Tangled nets/cord	Plastic/Polystyrene
G57/G58	Fish boxes	Plastic/Polystyrene
G59	Fishing line (tangled and not tangled)	Plastic/Polystyrene

Value	Description	Macro-Category
G60	Light sticks (tubes with fluid) incl. Packaging	Plastic/Polystyrene
G62/G63	Buoys (e.g. marking fishing gear, shipping routes, mooring boats etc.)	Plastic/Polystyrene
G65	Buckets	Plastic/Polystyrene
G66	Strapping bands	Plastic/Polystyrene
G67	Sheets, industrial packaging, plastic sheeting (i.e. non-food packaging/transport packaging) excluding agriculture and greenhouse sheeting	Plastic/Polystyrene
G68	Fiberglass items and fragments	Plastic/Polystyrene
G69	Hard hats/Helmets	Plastic/Polystyrene
G70	Shotgun cartridges	Plastic/Polystyrene
G71	Shoes and sandals made of artificial polymeric material	Plastic/Polystyrene
G73	Foam sponge items (i.e. matrices, sponge, etc.)	Plastic/Polystyrene
G75	Plastic/polystyrene pieces 0 - 2.5 cm	Plastic/Polystyrene
G76	Plastic/polystyrene pieces 2.5 cm > < 50 cm	Plastic/Polystyrene
G77	Plastic/polystyrene pieces > 50 cm	Plastic/Polystyrene
G91	Biomass holder from sewage treatment plants and aquaculture	Plastic/Polystyrene
G253	Single-use plastic masks (e.g. used for protection from COVID-19)	Plastic/Polystyrene
G254	Single-use plastic gloves (e.g. used for protection from COVID-19)	Plastic/Polystyrene
G124	Other plastic/polystyrene items (identifiable) including fragments	Plastic/Polystyrene
	Please specify the items included in G124	Plastic/Polystyrene
G125	Balloons, balloon ribbons, strings, plastic valves and balloon sticks	Rubber
G127	Rubber boots	Rubber
G128	Tyres and belts	Rubber
G134	Other rubber pieces	Rubber
	<i>Please specify the items included in G134</i>	Rubber
G137	Clothing / rags (e.g., clothing, hats, towels)	Cloth
G138	Shoes and sandals (e.g., Leather, cloth)	Cloth
G141	Carpet & furnishing	Cloth
G140	Sacking (hessian)	Cloth
G145	Other textiles (including pieces of cloths, rags, etc.)	Cloth
	<i>Please specify the items included in G145</i>	Cloth
G147	Paper bags	Paper/Cardboard
G148	Cardboard (boxes & fragments)	Paper/Cardboard
G150	Cartons/Tetrapack Milk	Paper/Cardboard
G151	Cartons/Tetrapack (non-milk)	Paper/Cardboard
G152	Cigarette packets (including transparent covering of the cigarette packet)	Paper/Cardboard
G153	Cups, food trays, food wrappers, drink containers	Paper/Cardboard
G154	Newspapers & magazines	Paper/Cardboard
G158	Other paper items (including non-recognizable fragments)	Paper/Cardboard
	Please specify the items included in G158	Paper/Cardboard
G159	Corks	Paper/Cardboard
G160/161	Pallets / Processed timber	Processed/Worked Wood
G162	Crates and containers / baskets (not fish boxes)	Processed/Worked Wood
G163	Crab/lobster pots	Processed/Worked Wood

Value	Description	Macro-Category
G164	Fish boxes	Processed/Worked Wood
G165	Ice-cream sticks, chip forks, chopsticks, toothpicks	Processed/Worked Wood
G166	Paint brushes	Processed/Worked Wood
G171	Other wood < 50 cm	Processed/Worked Wood
	<i>Please specify the items included in G171</i>	Processed/Worked Wood
G172	Other wood > 50 cm	Processed/Worked Wood
	<i>Please specify the items included in G172</i>	Processed/Worked Wood
G174	Aerosol/Spray cans industry	Metal
G175	Cans (beverage)	Metal
G176	Cans (food)	Metal
G177	Foil wrappers, aluminium foil	Metal
G178	Bottle caps, lids & pull tabs	Metal
G179	Disposable BBQ's	Metal
G180	Appliances (refrigerators, washers, etc.)	Metal
G182	Fishing related (weights, sinkers, lures, hooks)	Metal
G184	Lobster/crab pots	Metal
G186	Industrial scrap	Metal
G187	Drums and barrels (e.g., oil, chemicals)	Metal
G190	Paint tins	Metal
G191	Wire, wire mesh, barbed wire	Metal
G198	Other metal pieces < 50 cm	Metal
	<i>Please specify the items included in G198</i>	Metal
G199	Other metal pieces > 50 cm	Metal
	<i>Please specify the items included in G199</i>	Metal
G200	Bottles (including identifiable fragments)	Glass
G202	Light bulbs	Glass
G208a	Glass fragments >2.5cm	Glass
G210a	Other glass items	Glass
	<i>Please specify the items included in G210a</i>	Glass
G204	Construction material (brick, cement, pipes)	Ceramics
G207	Octopus pots	Ceramics
G208b	Ceramic fragments >2.5cm	Ceramics
G210b	Other ceramic/pottery items	Ceramics
	<i>Please specify the items included in G210b</i>	Ceramics
G95	Cotton bud sticks	Sanitary Waste
G96	Sanitary towels/panty liners/backing strips	Sanitary Waste
G97	Toilet fresheners	Sanitary Waste
G98	Diapers/nappies	Sanitary Waste
G133	Condoms (including packaging)	Sanitary Waste
G144	Tampons and tampon applicators	Sanitary Waste
G--	Other sanitary waste	Sanitary Waste
	<i>Please specify the other sanitary items</i>	Sanitary Waste
G99	Syringes/needles	Medical Waste
G100	Medical/ Pharmaceutical containers/ tubes	Medical Waste
G211	Other medical items (swabs, bandaging, adhesive plaster etc.)	Medical Waste
	<i>Please specify the items included in G211</i>	Medical Waste

Value	Description	Macro-Category
G101	Dog faeces bag	Faeces
G213	Paraffin/Wax	Paraffin/Wax
Presence of pellets	Please say Y or N	
Presence of oil tars	Please say Y or N	
Number Items	Number of items in the category expressed as number of objects / 100m	

Annex II

**Marine Litter Experts - Members of Online Working Group on Marine Litter
who Contributed to the Development of the Guidelines**

**Experts / Members of the Online Working Group on Marine Litter (OWG-ML)
who Contributed to the Development of the Present Document**

Country	Name and Affiliation Details
CROATIA	Dr Pero TUTMAN Institute of Oceanography and Fisheries Laboratory for Ichthyology and Coastal Fisheries Split, Croatia, tutman@izor.hr
FRANCE	Ms Bénédicte JENOT Directorate-General for Planning, Housing and Nature benedicte.jenot@developpement-durable.gouv.fr
	Ms Olivia GERIGNY IFREMER, Olivia.Gerigny@ifremer.fr
	Ms Camille LACROIX Aquatic Litter Monitoring and Studies Department, CEDRE camille.lacroix@cedre.fr
	Ms Marine PAUL Aquatic Litter Monitoring and Studies Department, CEDRE, Marine.Paul@cedre.fr
ISRAEL	Mr. Fred Arzoine Marine Environment Protection Division Ministry of Environmental Protection, Freda@sviva.gov.il
	Dr Dror ZUREL Marine Environment and Protection Division Ministry of Environment, DrorZ@sviva.gov.il
	Dr Yael SEGAL Israel Oceanographic and Limnological Research Institute (IOLR), yael_segal@ocean.org.il
ITALY	Ms. Cecilia SILVESTRI Italian National Institute for Environmental Protection and Research (ISPRA), cecilia.silvestri@isprambiente.it
	Mr. Marco MATIDDI Italian National Institute for Environmental Protection and Research (ISPRA), marco.matiddi@isprambiente.it
MOROCCO	Mr Mohamad Elbouch National Laboratory for Pollution Studies and Monitoring, elbouch@environnement.gov.ma
	Mr. Abdeslam Abid National Laboratory for Pollution Studies and Monitoring, ab.abdeslam@yahoo.fr
	Mr. Nachite Driss Abdelmalek Essaadi University, nachited@yahoo.fr
SLOVENIA	Mr. Uroš ROBIC Institute for Water of the Republic of Slovenia Ljubljana, Slovenia, uros.robic@izvrs.si
	Dr Manca Kovač VIRSEK Institute for Water of the Republic of Slovenia Ljubljana, Slovenia, manca.virsek@izvrs.si
SPAIN	Ms María Plaza ARROYO Spanish National Public Works Research Centre (CEDEX) Center for Harbor and Coastal Studies Madrid, Spain, e-mail: maria.plaza@cedex.es
TUNISIA	Dr Nouredine ZAABOUB Marine Science Laboratory National Institute of Marine Sciences and Technologies (IMSTM) Tunis, Tunisia, nouri.zaaboub@gmail.com

TURKIYE	Ms Hacer SELAMOĞLU ÇAĞLAYAN Ministry of Environment, Urbanization and Climate Change (MoEUCC), hacer.caglayan@csb.gov.tr
	Ms Sevil ÖKSÜZ Ministry of Environment, Urbanization and Climate Change (MoEUCC) sevil.oksuz@csb.gov.tr
	Mr Hakan ATABAY TUBITAK Marmara Research Center - Climate Change and Sustainability Vice President - Marine Research and Technologies Research Group, hakan.atabay@tubitak.gov.tr
	Mr Ibrahim TAN TUBITAK Marmara Research Center - Climate Change and Sustainability Vice President - Marine Research and Technologies Research Group, ibrahim.tan@tubitak.gov.tr
EC/JRC	Mr. Georg Hanke European Commission Joint Research Centre Directorate D Sustainable Resources Water and Marine Resources Unit, georg.hanke@ec.europa.eu