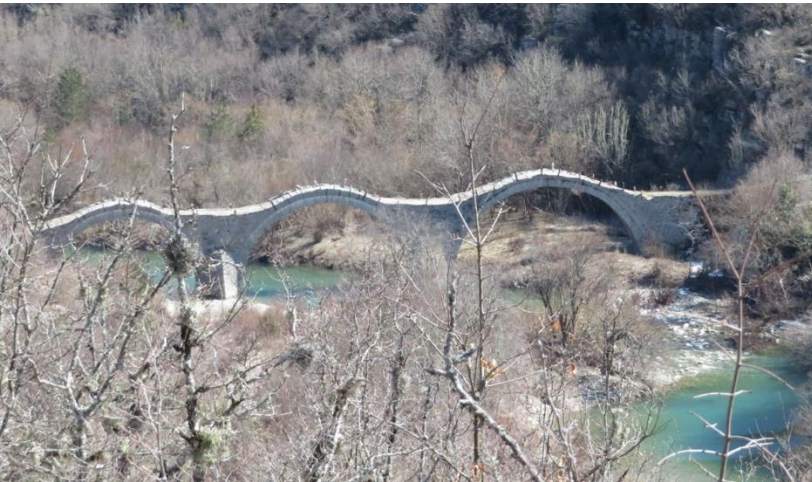




PONT | PRESPA OHRID  
NATURE TRUST

## Increased management effectiveness of Protected Areas and enhancing connectivity conservation

[info@pont.org](mailto:info@pont.org) - [www.pont.org](http://www.pont.org)

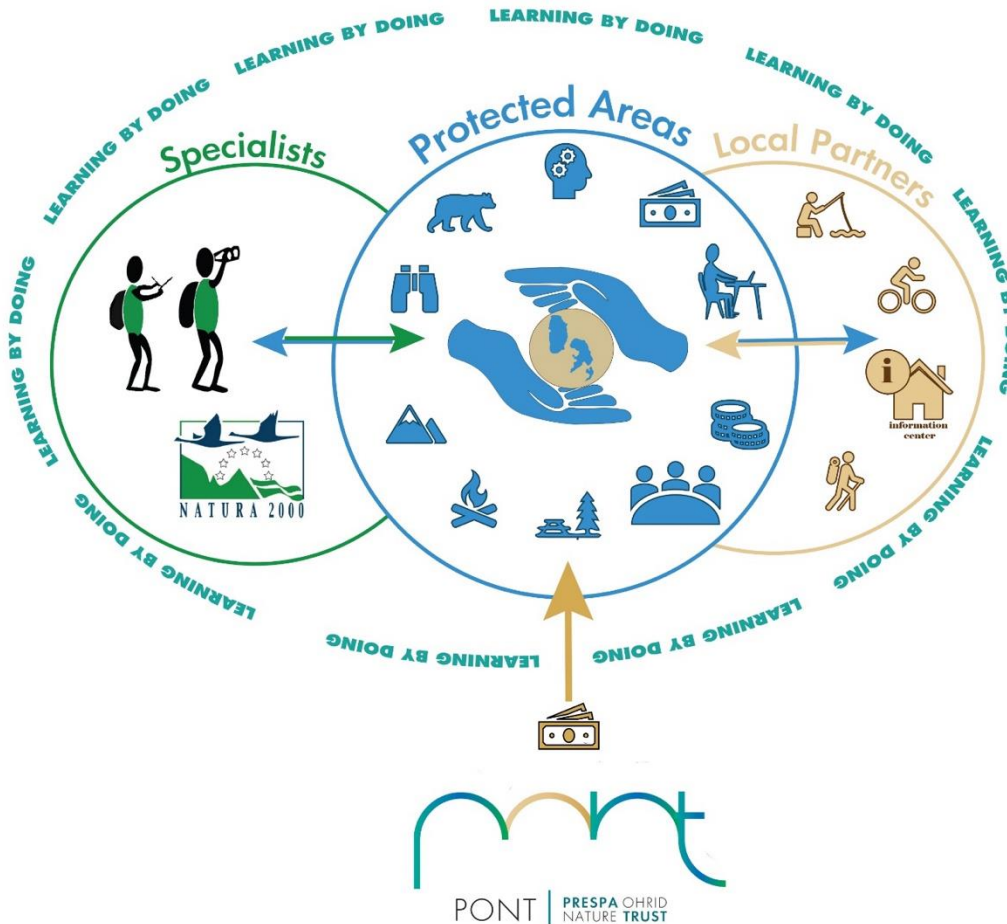


**Our Mission - Conserving nature for a sustainable future through long-term partnerships and financing**

**Our Vision - Transboundary conservation areas are reconnected and sustained as important biodiversity hotspots where people live and work in harmony with nature**



# Grant Portfolio – up to 13 Protected Areas – € 1 - 2 Mio / year for at least 10 years

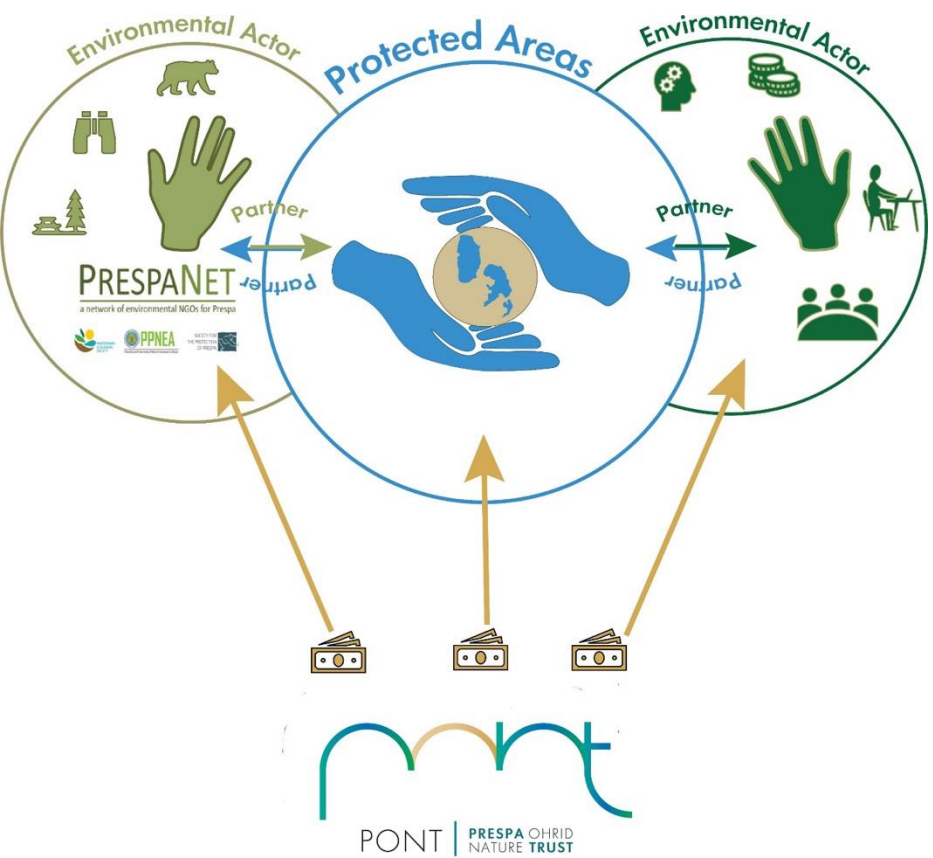


Transformation of the PA system of 400.000+ ha from project-driven to self-managed and increased management effectiveness according to European - International standards

<https://www.pont.org/programme/>

# Grant Portfolio – up to 26 EAs/NGOs

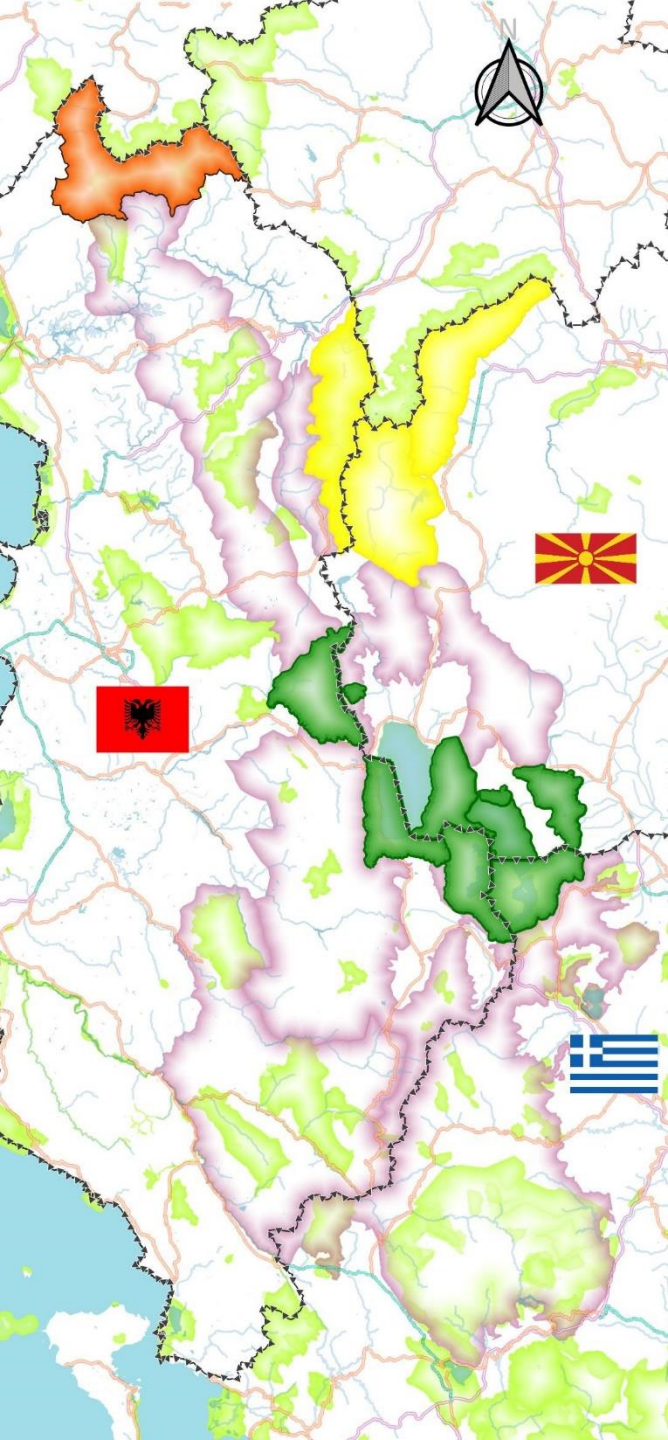
€ 1 - 2 Mio / year for at least 10 years



Environmental Actors (EAs) have improved their contribution to biodiversity conservation and sustainable management of natural resources (including transboundary cooperation)

*Organisational development by using the improved CSTT & leverage of additional funding*



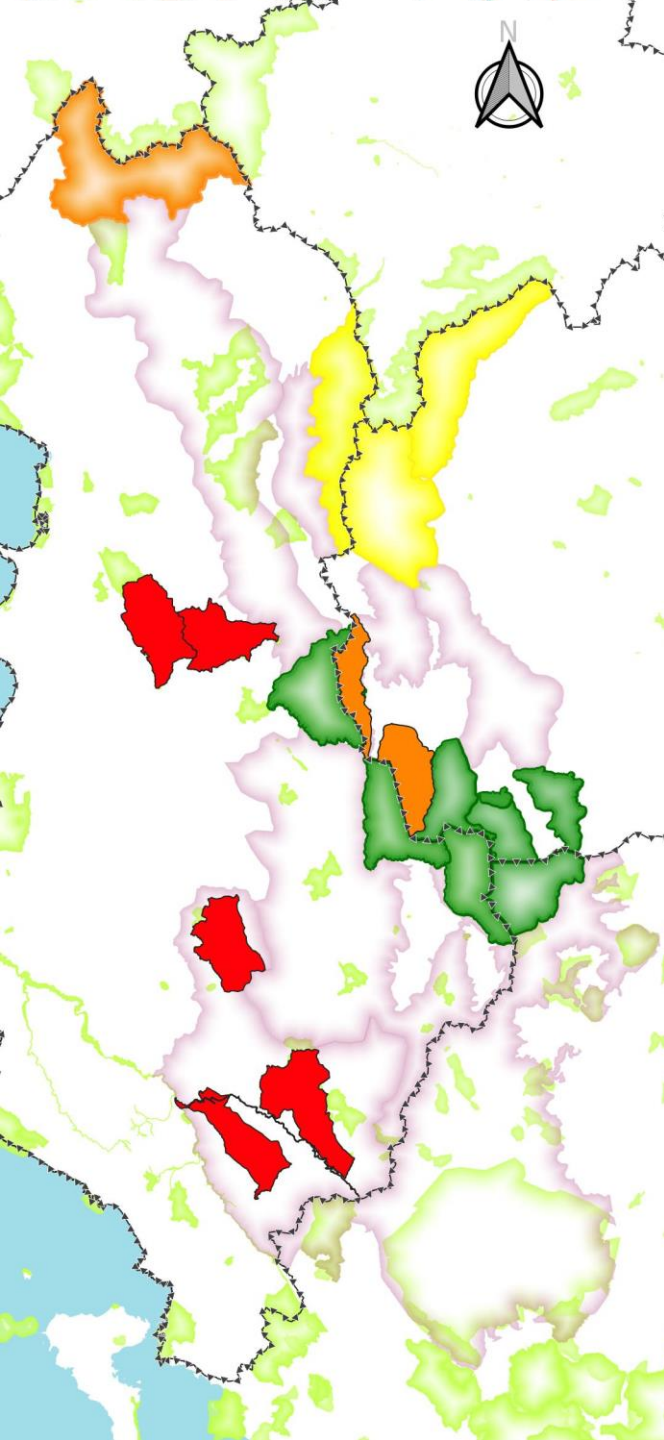


# PONT: 2017-2024

***“The breakdown of the Management Plan into an operational plan, combined with the annual participatory METT assessment, helps us to effectively plan and manage the Protected Areas.***

***With the help of the PONT tools, we prioritise conservation actions and the allocation of resources. Now we know what to do 365 days of the year”***

*National Agency of Protected Areas (NAPA) in Albania  
KfW review mission – 11-13 September 2024*



# PONT Expansion



Request from governments of up to an additional 5-6 Protected Areas in Albania and 2 in North Macedonia with up to 2 EAs/NGOs per additional Protected Area (depends on results feasibility study; PONT readiness; positive decision by the PONT Supervisory Board; and additional funding)

***“The PONT tools allow us to effectively cooperate with Environmental Actors such as NGOs. In this way we create synergies and avoid duplication.*”**

***Each actor can focus on their mandate and expertise while contributing to the implementation of the park Management Plan according to international/European standards”***

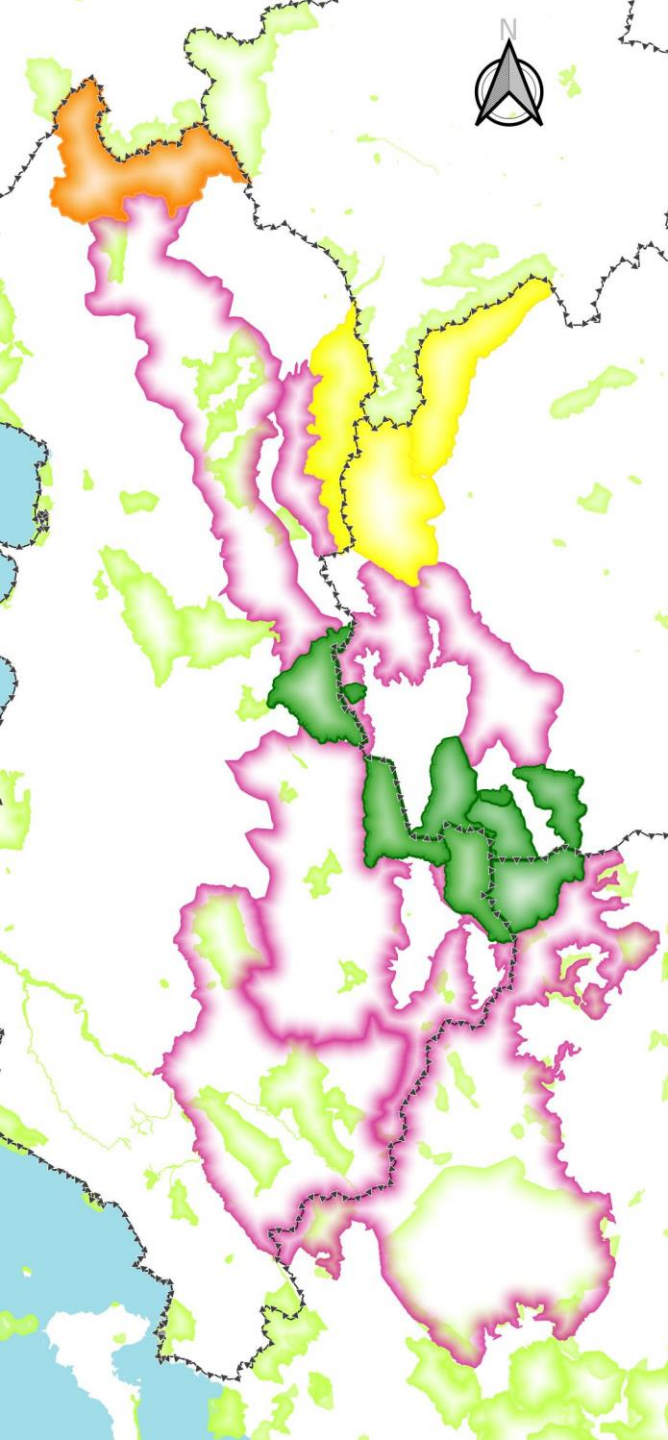
*National Agency of Protected Areas (NAPA) in Albania  
KfW review mission – 11-13 September 2024*

# PONT Connect



[info@pont.org](mailto:info@pont.org)  
[www.pont.org](http://www.pont.org)





# PONT Connect



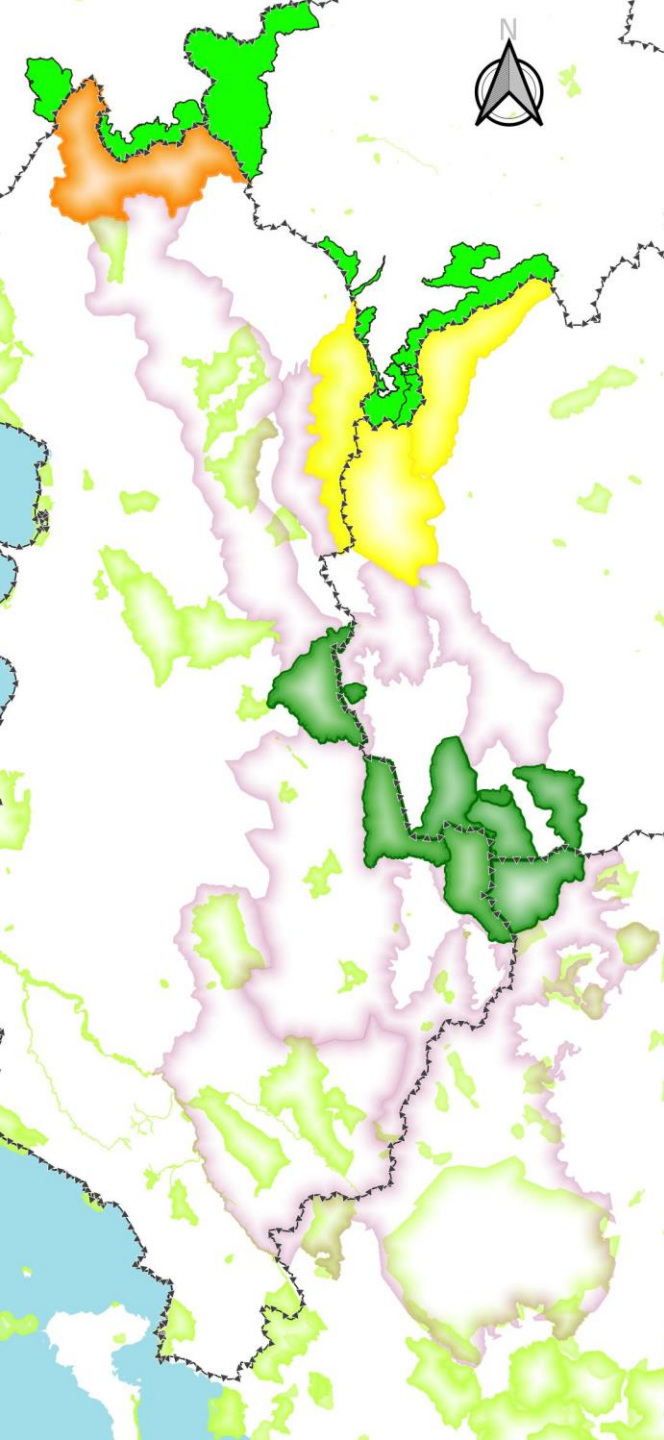
## Fundraising for continuity beyond pilot phase

Connectivity conservation in important eco-corridors makes the Protected Area system more functional and resilient against the negative impacts of climate change.

NGOs help to facilitate the vision, governance and management of important eco-corridors. Local actors co-manage these areas balancing ecological and socio-economic objectives.

***“The PONT involvement in the Pindos-Presepes Connectivity Conservation Area (CCA) has significantly strengthened collaboration among the organizations. This closer contact not only allows us to address issues in the region more dynamically but also reinforces the alliances forming within the CCA, contributing to a better framework of cooperation and a shared vision” – MedINA – August 2024***





## PONT Expansion beyond 3 countries



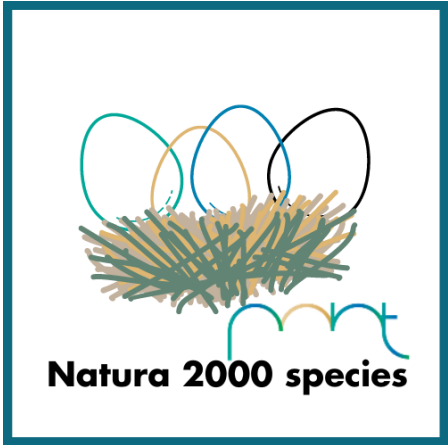
Expansion into Kosovo or Montenegro would need a detailed study to examine the ecological connectivity and feasibility.

Such an expansion needs a legal change of the PONT Charter & an additional local PONT regional programme office needs to be established.

This would require a starting capital of at least € 50 Mio.

For now it makes more sense to focus on the expansion options within the three countries.

# Impact Indicators





<b>Impact indicators</b>	<b>Baseline</b>	<b>2023</b>	<b>Target 2032</b>	<b>Target 2040</b>
<i>Territory (ha) of Protected Areas supported by PONT operating in line with international (IUCN) standards</i>	0	351.234	350.000	>400.000
<i>Number of strategically PONT financed partnerships between PAs and Environmental Actors (EAs)</i>	0	30	24	28
<i>Number of conservation actions benefiting priority Natura 2000 habitat types</i>	1	7	8	10
<i>Number of conservation actions benefiting priority Natura 2000 species</i>	9	58	60	80
<i>Number of conservation actions benefiting endemic species</i>	0	44	45	55
<i>Number of hectares of ecological corridors with strengthened management of biodiversity</i>	0	2.300	152.300	152.300
<i>Number of green businesses/initiatives supported</i>	0	30	38	48



**Thank you!**

