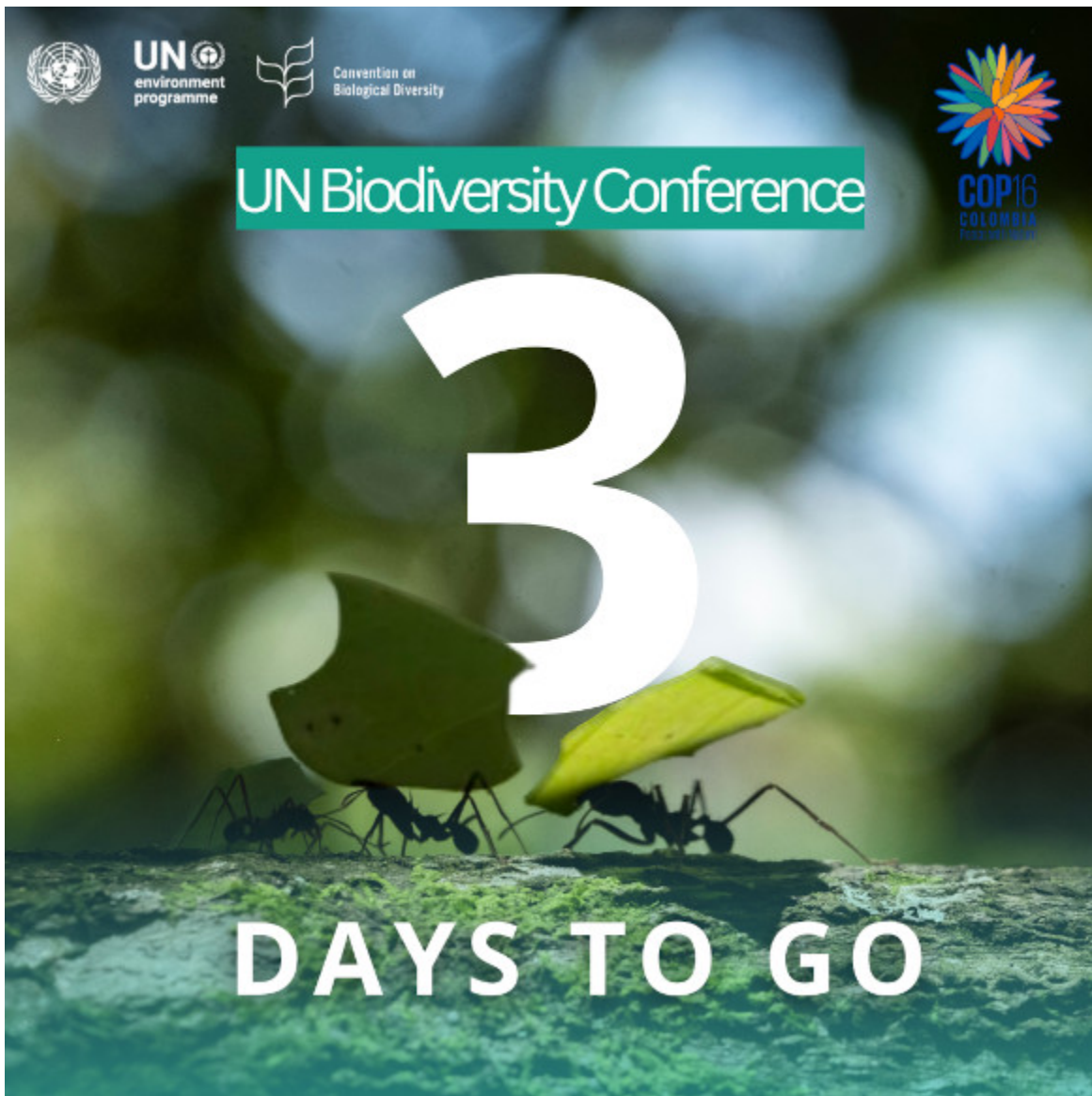




**Edition Special on Biodiversity**



In the context of Sixteenth meeting of the Conference of the Parties to the Convention on Biological Diversity taking place next week in Cali, Colombia from 21 October to 1 November 2024, we would like to highlight how global community is advancing the agenda to reduce and eliminate mercury and associated impacts on biodiversity. This is achieved by knowledge generation, curation, dissemination as well as on the ground

transformative work.

The Secretariat of the Global Mercury Partnership

## KNOWLEDGE AND RESOURCES



RE-SHARE ON X >>

Explore the **knowledge hub** on [Artisanal and Small-scale Gold Mining and Biodiversity](#) developed as part of the Partnership's work on cross-cutting topic and contribution to address the triple planetary crisis on climate change, chemical pollution and biodiversity loss.

RE-SHARE ON LINKEDIN >>



Visit the planetGOLD website to discover the **Curated collections** including on [Biodiversity and ASGM](#)



To advance scientific understanding of mercury exposure in biota from around the world, an esteemed group of nearly 200 international scientists collaborated on producing 18 peer-reviewed papers that form a two-part **Special Issue** of [Ecotoxicology](#).



The Biodiversity Research Institute **webpage** presents the [Global Biotic Mercury Synthesis \(GBMS\)](#) database, a compilation and synthesis of published fish, sea turtle, bird, and marine mammal mercury data collected from all over the world.



### [Mercury and Biodiversity](#)

This **publication** explores opportunities for generating co-benefits through coherent implementation of the Minamata Convention on Mercury and the Kunming-Montreal Global Biodiversity Framework.

[The socio-economic impacts of mercury](#)



### [pollution on fisheries and livelihoods](#)

This **publication** explores how a natural capital approach may support the implementation of the Minamata Convention on Mercury.

## UNEP PRESENCE AT BIODIVERSITY COP SIDE EVENT



Convention on Biological Diversity COP16 - Side event

Artisanal and small scale gold mining not only contributes to mercury pollution but also has direct impacts on biodiversity loss. The [side-event](#) on **Friday 25 October** at CBD COP16 will present how by aligning the actions under the Minamata Convention and the Kunming-Montreal Global Biodiversity Framework these interconnected challenges can be addressed more effectively and mitigate impacts on biodiversity.

## ON THE GROUND TRANSFORMATIVE WORK



The [planetGOLD programme](#) is working to eliminate mercury from the supply chain of gold produced by artisanal and small-scale miners. In partnership with governments, the private sector and local communities, planetGOLD helps creating access to formal supply chains, which will enable and encourage miners to adopt mercury free methods and improve their livelihoods while preserving and minimizing impacts on biodiversity.

[INFORMATION ON BECOMING A PARTNER >>](#)

## READ MORE ABOUT THE PARTNERSHIP AREAS

Artisanal and small-scale  
gold mining

Mercury releases from  
coal combustion

Mercury air transport  
and fate research

Mercury waste management



**Mercury cell chlor-alkali  
production**

**Mercury supply and storage**

**Mercury in products**

**Mercury releases from  
the cement industry**

Copyright © 2024 Secretariat of the UNEP Global Mercury Partnership

For more information visit [our website](#) or contact us [by email](#)

Our mailing address is:

Secretariat of the UNEP Global Mercury Partnership  
Palais des Nations, 8-14 avenue de la Paix  
Geneva 1211  
Switzerland