

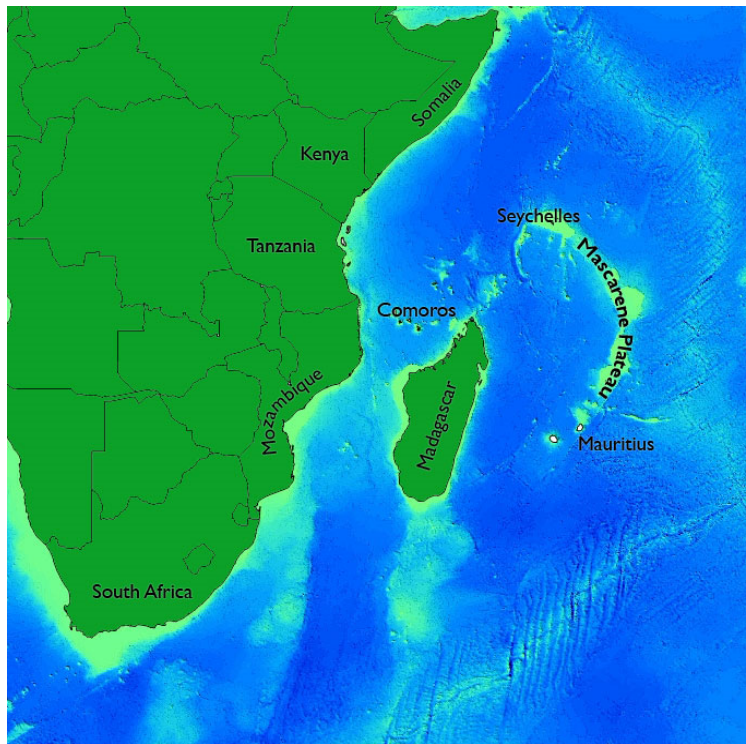


Empowered lives.
Resilient nations.

WIO LME SAPPHIRE

Strategic Action Programme:

Policy Harmonisation and Institutional Reforms



**BACKGROUND DOCUMENT FOR THE WIO LME SAPPHIRE
INCEPTION MEETING: 16 NOVEMBER 2017**

TABLE OF CONTENTS

1. BACKGROUND	3
1.1 Origins of the Project	3
1.2 Overview of the WIO LME Strategic Action Programme	3
1.3 The WIO-Lab SAP	6
1.4 SAP Implementation	6
2. OVERVIEW OF WIO LME SAPPHIRE	7
2.1 Role of SAPPHIRE in WIO LME SAP Implementation	7
2.2 Project components	8
2.3 Project Outputs	8
3. STAKEHOLDERS	9
3.1 Implementing and Executing Agencies	9
3.2 Participating Countries	9
3.3 Co-financiers	9
3.4 Partner Projects	10
3.5 Other stakeholders	10
4. PROPOSED COORDINATION MECHANISMS	10
4.1 Coordination of the SAPPHIRE Project	11
4.2 Project Steering Committee	12
4.3 Coordination at national level	12
4.4 Coordination with WIOSAP	12
5. SAPPHIRE YEAR 1	13
ANNEX 1	15
ANNEX 2	18

1. BACKGROUND

1.1 Origins of the Project

The WIO LME SAPPHERE (Western Indian Ocean Large Marine Ecosystem Strategic Action Programme: Policy Harmonisation and Institutional Reforms) is a project financed by the Global Environment and implemented by the UNDP. It originated in two previous projects: i) the Agulhas and Somali Current Large Marine Ecosystems Project (ASCLME) – also a UNDP-GEF initiative; and ii) the Southwest Indian Ocean Fisheries Project (SWIOFP), a GEF financed project implemented by the World Bank. The ASCLME Project addressed a range of coastal and oceanic activities including offshore ecosystem assessment, coastal livelihoods and community engagement, coastal artisanal and subsistence fisheries, larval transport, marine pollution and marine invasive species while SWIOFP dealt with the offshore and nearshore commercial fisheries issues.

Although the ASCLME Project (2008 – 2014) started ahead of the SWIOFP Project, a decision was taken in 2010 that the two projects would align their activities with a view to producing a single Transboundary Diagnostic Analysis (TDA) and Strategic Action Programme (SAP) – common outputs for projects of this nature. A joint TDA was duly published in 2012, while the joint SAP (the Strategic Action Programme for Sustainable Management of the Western Indian Ocean Large Marine Ecosystems (WIO LME SAP) was endorsed by the countries bordering the Western Indian Ocean on 23rd June, 2015.

A third project financed by the GEF - Addressing Land-Based Activities in the Western Indian Ocean (WIO-LaB) – was executed over a slightly earlier time period by the Nairobi Convention Secretariat supported by the United Nations Environment Programme (UNEP). WIO-LaB addressed the impacts of land-based activities on the coastal and nearshore of the Western Indian Ocean and also produced a TDA (2009) and SAP (2009). This SAP is now being implemented by a separate follow-up project, namely WIOSAP.

1.2 Overview of the WIO LME Strategic Action Programme

The primary objective of the WIO LME SAP is to address the four “Main Areas of Concern” identified by the TDA through cooperative action. These Main Areas of Concern include:

- Water Quality Degradation :river flows, ground and surface water quality;
- Habitat and Community Modification : shoreline change; damage to watersheds, coastal plains, mangroves, coral reefs, seagrass beds, pelagic habitats; introduction of invasive alien species;
- Declines in Living Marine Resources: sharks and rays; large & small pelagics; reef and demersal fish; sea cucumbers; prawns, shrimp and lobsters; non-target species such as marine mammals and seabirds;

- Environmental Variability and Extreme Events: climate change, sea-level rise, ocean acidification, ocean warming, changes in circulation, changes in productivity, and geohazards.

For three of these Areas of Concern, the WIO LME SAP/TDA also identified more specific issues, recommended Environmental Quality Objectives and proposed a range of activities to achieve them. The Table below provides a summary of the issues and EQO's, while the detailed information – including proposed activities, targets and indicators can be found in Annex IV of the TDA (available at www.asclme.org).

Area of concern	Issue	Environmental Quality Objective
Water Quality	Alterations to river flow, freshwater input, sediment loads	Environmental flow requirements are taken into account for future development planning.
	Ground and surface water quality (FW)	Quality restored & further degradation prevented
	Microbiological contamination of coastal waters	Contamination reduced
	Solid waste/marine litter	Levels reduced
	Oil spills	Capacity in place to prevent & mitigate
Habitat & community modification	Shoreline change, due to modification, land reclamation and coastal erosion	Effective mitigation and management measures in place
	Disturbance, damage and loss of coastal habitats	Coastal habitats and associated ecosystem services effectively protected and managed
	Disturbance, damage and loss of mangrove habitats	Mangrove habitats and associated ecosystem services effectively protected and managed
	Disturbance, damage and loss of coral reef habitats	Coral reef habitats and associated ecosystem services effectively protected and managed
	Disturbance, damage and loss of seagrass habitats	Seagrass habitats and associated ecosystem services effectively protected and managed
	Disturbance damage and loss of upland / watershed habitats	Watersheds protected, rehabilitated, ecosystem function restored, and sustainably managed
	Disturbance, damage and loss of deep water habitats (including sea mounts)	Deep water habitats and associated ecosystem services effectively protected and managed
	Introduction or spread of exotic non-native species, invasive and nuisance species	Eliminate or minimize the risk of the introduction or spread of exotic non-native species, invasive and nuisance species.
Decline in Living Marine Resources	Decline in populations of Sharks and Rays	Restoring the populations of sharks and rays to sustainable levels
		Reduce fishing effort and capacity to match MSY or any other management reference point in key shark and ray

Area of concern	Issue	Environmental Quality Objective
		stocks.
	Decline in populations of large pelagics	Contributing to the rebuilding/restoration of the populations of large pelagics to sustainable levels
	Decline Populations in Small pelagics	Rebuilding and restoration of the populations of small pelagic species to sustainable levels
	Decline in populations of reef and demersal fish	Rebuilding and restoration of the populations of reef and demersal fish species to sustainable levels
	Decline in populations of sea cucumbers	Rebuilding and restoration of the populations of sea cucumber species to sustainable levels
	Decline in populations of prawns and shrimps	Rebuilding and restoration of the populations of prawns and shrimps fisheries to sustainable levels
	Decline in populations of lobsters	Rebuilding and restoration of the populations of lobster species to sustainable levels
	Excessive bycatch and discards of non-target species	Maximise the value of bycatch and eliminate discards

Due to its long-term nature, no EQO's were identified for the fourth area of concern, namely environmental variability and extreme events. However, understanding the potential trends and impacts of climate change is an important part of the WIO LME SAP. It is therefore included in many of the activities recommended by the TDA/SAP, most of which cut across all four Areas of Concern. Cross-cutting activities include:

- The establishment of a Regional Ecosystem Monitoring Programme: a 5 –year reviewable set of monitoring activities looking at biological, chemical, physical and socioeconomic indicators of ecosystem well-being and productivity. It would also track ecosystem change and generate data that could be used for modelling/validation;
- The development and implementation of a Regional Capacity Building and Training Programme aimed at strengthening institutional capacities and providing training for scientific and managerial skills, etc;
- The establishment of a Science Based Governance Mechanism at National and Regional levels that would enable identified trends in ecosystem parameters to feed in to adaptive management processes and policy decisions.

The WIO LME SAP expressly identifies the above activities as the basis of a cooperative approach to managing the Western Indian Ocean Large Marine Ecosystem (LME) which includes not only the maritime zones of the countries of the region, but also the adjacent areas as shown in the Figure below.

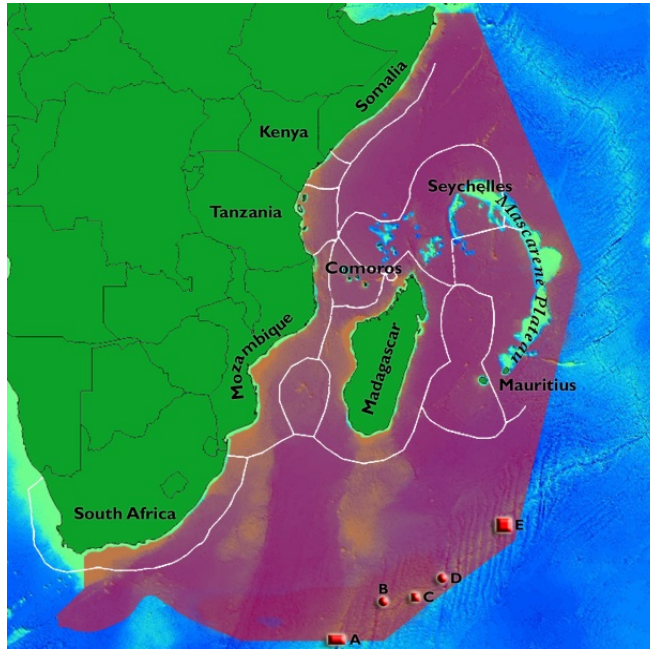


Fig: Area covered by the LMEs of the Western Indian Ocean

1.3 The WIO-Lab SAP

The objectives for the SAP produced by the WIO-Lab project include:

- Critical coastal habitats in the WIO region protected, restored and managed for sustainable use;
- Water quality in the WIO region to meet international standards by 2035;
- River flows in the WIO region are wisely and sustainably managed by 2035; and
- Effective collaboration of stakeholders at regional level to address transboundary challenges.

By comparison with the WIO LME SAP, which covers a broad range of issues primarily in offshore areas, the WIO-Lab SAP is focussed more specifically on threats posed to coastal and inshore areas. Nevertheless, the two SAPs have similar, and in some respects, overlapping objectives.

1.4 SAP Implementation

Although it is noted that there are many projects which can be considered to be contributing to addressing the issues raised in the two SAPs, projects which have been developed directly in response to them include:

- SWIOFish : South West Indian Ocean Fisheries Governance and Shared Growth Project 1. This is the first of a planned series of projects aimed at increasing the economic, social, and environmental benefits to SWIO countries from sustainable marine fisheries. It was initiated in 2015 and is scheduled for completion in 2021. Its objective is to improve the management effectiveness of selected priority fisheries at regional, national and community levels. It is being implemented by the World Bank, with the Indian Ocean Commission as the Executing Agency.

- WIOSAP: The goal of the WIOSAP project is to reduce impacts from land-based sources and activities and sustainably manage critical coastal-riverine ecosystems through the implementation of WIO-SAP priorities with the support of partnerships at national and regional levels. It is a GEF-UNEP project with UNEP/Nairobi Convention Secretariat as the Executing Agency. The Inception Meeting was held in April, 2017 and it is intended to run until 2022.
- SAPPHIRE: The aim of the SAPPHIRE project is to support and assist the appropriate and formally mandated government institutions and intergovernmental bodies in the region to implement the activities which they require in order to deliver the WIO LME SAP and to ensure sustainability of efforts and actions toward long-term management of activities within the LMEs as well as the sustainability of associated institutional arrangements and partnerships. It is projected to run from late 2017 to 2022.
- Joint Management Area demonstration project: This project in fact addresses a specific sub-component of the broader SAPPHIRE project, namely Deliverable 4.2.1: Demonstrating Innovative Ocean Governance Mechanisms for Extended Continental Shelf Management. It covers the newly-established Joint Management Area (JMA) between Mauritius and Seychelles for the Continental Shelf in the Mascarene region, as well as the associated Contiguous Adjacent High Seas Areas. It will be implemented by UNDP and the Mauritius-Seychelles Joint Management Committee.

At some point a review of the many other projects and programmes in the region which contribute directly or indirectly to the implementation of the WIO LME SAP should be undertaken with a view to identifying gaps where new projects/programmes need to be developed.

2. OVERVIEW OF WIO LME SAPPHIRE

2.1 Role of SAPPHIRE in WIO LME SAP Implementation

As indicated above, the primary objective of the WIO LME SAP is to address the four “Main Areas of Concern” identified by the TDA through cooperative action. The overall objective of the SAPPHIRE project is to achieve effective, long-term, ecosystem management in the Western Indian Ocean LMEs in line with the WIO LME SAP. It aims to do this by providing support and assistance to the appropriate and formally mandated government institutions and intergovernmental bodies in the region to implement the activities required to deliver the WIO LME SAP and to ensure sustainability of efforts and actions toward long-term management of activities within the LMEs as well as the sustainability of associated institutional arrangements and partnerships.

The project also seeks to promote progress towards meeting the UNDP goals and targets with respect to sustainable development, poverty alleviation, early warning of disaster and climate change, the Sustainable Development Goals, gender mainstreaming and youth.

It is important to note that SAPPHIRE will NOT implement the entire WIO LME SAP. This is the responsibility of the national governments, regional organisations and other projects, programmes and partners.

2.2 Project components

SAPPHIRE has five components. **Component 1** comprises a suite of activities and deliverables in support of management and policy reforms for WIO LME SAP Implementation and has been allocated most of the funding, both from GEF and in terms of co-financing (approximately 50% in both cases). These reforms are to introduce an ecosystem-based management approach, while the proposed structures are intended to provide mechanisms/bodies at both national and regional levels which will i) facilitate Science-based Governance; ii) take responsibility for the delivery of the proposed Ecosystem Monitoring Programme; and iii) the Capacity Building and Training Programme.

The other Components address more specific management and governance issues within the LMEs with a view to contributing towards effective SAP Implementation.

Component 2 promotes ecosystem-based management measures through community level demonstration projects aimed at reducing stress on the environment. This will build on the Local Economic Development (LED) Plans developed during ASCLME and will include small-scale, artisanal fisheries and associated small-area management approaches.

Component 3 also aims to reduce environmental stress, in this case through the development of partnerships with the private sector which would see them transforming their operations and management practices as well as contributing to ecosystem monitoring.

Component 4 is focussed on the development of innovative approaches to the management of areas beyond national jurisdiction that nevertheless still fall within the LMEs and therefore have transboundary influence and implications. As indicated above, one of the sub-components of Component 4 (Deliverable 4.2.1 - Demonstrating Innovative Ocean Governance Mechanisms and Delivering Best Practices and Lessons for Extended Continental Shelf Management within the Western Indian Ocean Large Marine Ecosystems) will be implemented as a 'stand-alone' project by UNDP and the Mauritius-Seychelles Joint Management Committee.

Component 5 addresses the training and capacity development needs in the region with a view to promoting effective SAP management and implementation. The programme will be based on priorities identified by the ASCLME project.

A more detailed description of the project – including Outcomes and Deliverables for each component can be found in Annex 1.

2.3 Project Outputs

The anticipated project outputs include:

- Legal and regulatory frameworks, policies and institutions enabled to ensure the conservation, sustainable use, and access and benefit sharing of natural resources, biodiversity and ecosystems, in line with international conventions and national legislation

- Solutions developed at national and sub-national levels for sustainable management of natural resources, ecosystem services, chemicals and waste
- Catalyse multistate cooperation to rebuild marine fisheries and reduce pollution of coasts and Large Marine Ecosystems (LMEs) while considering climatic variability and change
- Implementation of agreed Strategic Action Programmes (SAPs) incorporates ecosystem-based approaches to management of LMEs, ICM principles and policy/legal/ institutional reforms into national/local plans
- Institutions for joint ecosystem-based and adaptive management for LMEs and local ICM frameworks demonstrate sustainability
- Implementation of national/local reforms; functioning of national inter-ministry committees.
- Cooperation frameworks adopted & include sustainable financing.

3. STAKEHOLDERS

As is noted in the SAPPHIRE Project Document, the successful implementation of the WIO LME SAP will require collaboration with a wide range of stakeholders from both within the region and internationally. At the same time, there is a more limited group of partners and stakeholders that have made specific commitments to the SAPPHIRE project and/or who expect to be beneficiaries of the project.

3.1 Implementing and Executing Agencies

The Implementing Agency for SAPPHIRE is UNDP, while the Executing Agency is the Nairobi Convention Secretariat supported by UNEP.

3.2 Participating Countries

The governments of all of the countries in the Western Indian Ocean region – with the exception of the French Territories who are not eligible for GEF funding – are partners in SAPPHIRE. They include Comoros, Kenya, Madagascar, Mauritius, Mozambique, Seychelles, Somalia, South Africa and Tanzania. They have all committed substantial in-kind co-financing to the project and also all likely beneficiaries thereof. They are also all – together with France/Reunion – Contracting Parties to the Nairobi Convention.

Within each country there are a number of Ministries/Departments which have an interest in the project. The most important of these are the Ministries of Environment, Fisheries, Transport (Shipping), Energy/Mineral Resources and Tourism.

At the same time, SAPPHIRE will fund the implementation of a number of demonstration/pilot projects which in some cases may involve local authorities who will then also become partners in the project. These will, however, only be selected during the first year of the project.

3.3 Co-financiers

In addition to the UNDP and the participating governments, co-financiers listed in the SAPPHIRE Project Document include the International Maritime Organisation (IMO), Birdlife, the Future Oceans Alliance, WIOMSA, the IUCN and NOAA. These contributions are predominantly in-kind, in most

cases consisting of implementation of activities relevant to the WIO LME SAP, and the sharing of data and information of relevance to SAPPHIRE and/or the SAP.

3.4 Partner Projects

While there are numerous projects in the WIO which are of relevance to SAPPHIRE and the implementation of the SAP, the key partner projects here are, as indicated above, SWIOFish, and WIOSAP. WIOSAP in particular has a number of activities in common with SAPPHIRE and it is imperative that there is close coordination between them. This is discussed in more detail below.

3.5 Other stakeholders

In addition to the co-financiers, a number of other organisations are named as playing a role in specific components in SAPPHIRE. These include WWF, CORDIO, WOC, UNEP WCMC, UNESCO-IOC and IOI-SA.

Moreover, during ASCLME a wide variety of other partnerships were established, in some cases through an Aide Memoire or other agreement, many of which included a commitment to being part of the proposed WIOSEA (Western Indian Ocean Sustainable Ecosystem Alliance). These included the private sector, academic institutions, UN Agencies, IGO's and NGO's as well as projects and programmes and it was envisaged that they would contribute to one or more of the cross-cutting activities which were proposed as the pillars of the SAP implementation – the Ecosystem Monitoring Programme, a Science-based Management and Governance Mechanism, and a Capacity Building and Training Programme.

SAP Implementation	Potential partners
Long-term Ecosystem Monitoring Programme	NOAA, NIOZ, IRD, ACEP, BCRE, Birdlife SA, IOCUNESCO, SWIOFC, FAO, UBC, COI, IMO, Univ. of Reunion, IHO, JAMSTEC, Univ. of Tokyo, DBCP, JCOMM, IGOOS, WMO, Indian Ocean Panel, SIBER, Univ. of Wales, WIOMSA, World Ocean Council
Science-based Management and Governance Mechanism	NOAA, IUCN, COI, SWIOFP, SWIOFC, BCRE, Rhodes Univ., IW:LEARN GEF, SIODFA, Nairobi Convention, IRFS, JAMSTEC, IMO, IOC UNESCO, ODINAfrica, IODE, UNDP, WWF, World Ocean Council
Capacity Building and Training Programme	IOC-UNESCO, Univ of Cape Town, Rhodes Univ, IW:LEARN, NOAA, IMO, IOI-SA, Univ of Wales

Since the agreements made under ASCLME to form WIOSEA are effectively no longer valid, the individual organisations will need to be approached to reaffirm their interest and to negotiate new agreements.

4. PROPOSED COORDINATION MECHANISMS

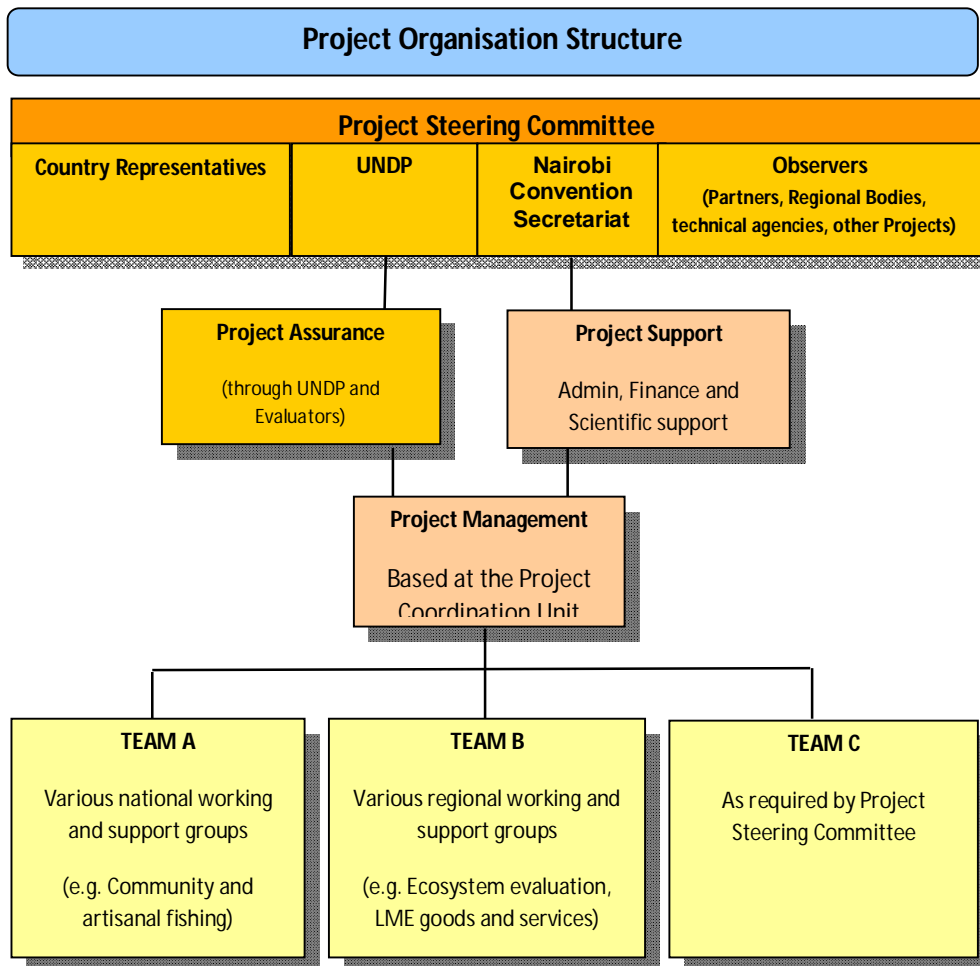
Although the ASCLME project was focussed on offshore areas, and WIO-Lab on coastal and inshore, the two SAPS have similar, and in some respects, overlapping objectives. It is therefore important that the two SAPs are implemented in a collaborative and coordinated manner. In particular, it is crucial that a mechanism be put in place as soon as possible to ensure coordination between

WIOSAP and SAPPHIRE ultimately combining the institutional arrangements and administrative processes to achieve a single implementation strategy.

According to the Project Document SAPPHIRE will be coordinated through the following structures (see also the organogram below). However, it is noted that in light of proposals to maximise collaboration with WIOSAP, some of these details may need to be reconsidered and it may make sense to actually merge some of these.

4.1 Coordination of the SAPPHIRE Project

The Project Coordination Unit will be hosted by the Government of Seychelles and will consist of a Project Coordinator and Technical Specialist and some support staff. In addition, there will be a Finance Officer, a Procurement Officer and a Technical Officer based at the Nairobi Convention Secretariat offices all of whom will serve – and be financed by - both SAPPHIRE and WIOSAP.



4.2 Project Steering Committee

Implementation of the Project will be guided by a Project Steering Committee (PSC) comprised of the representatives of the participating countries, UNDP (as the Implementing Agency) and the Nairobi Convention Secretariat (as the Executing Agency). Other donors and partners will be added to the PSC as appropriate. The representatives of each country will be discussed and decided at the first PSC meeting.

The PSC, as the highest decision-making body for the project, will provide guidance based upon project progress assessments and related recommendations from the PCU. The PSC will review and approve annual project reviews and work-plans, technical documents, budgets and financial reports. The PSC will provide general strategic and implementation guidance to the PMU. It will meet annually and make decisions by consensus.

4.3 Coordination at national level

The SAPPHIRE Project Document makes provision for the establishment of national structures to coordinate the implement of WIO LME the SAP – National Intersectoral Committees as well as National Technical Committees.

It is noted that during the Inception Meeting of WIOSAP in April, 2017, the countries identified a need for a National Project Manager for WIOSAP to work with the National Steering Committees and National Focal Points to drive the project, monitor progress of implementation especially where there are pilot/demonstration projects, and compile relevant reports. It is submitted that there is a similar need for SAPPHIRE and consideration should be given to having a single National Project Manager for both projects.

4.4 Coordination with WIOSAP

SAPPHIRE and WIOSAP both address threats to the marine ecosystems and resources of the Western Indian Ocean, involve the same countries, and have a number of specific activities in common. It is therefore important that the two projects are implemented in a collaborative and coordinated manner. This was recognised in the SAPPHIRE Project Document, and in many of the more recent WIOSAP reports, and is facilitated by the fact that the Nairobi Convention Secretariat is the Executing Agency for both projects. At the same time, while WIOSAP has already been initiated, SAPPHIRE is only just getting off the ground. It is therefore crucial that agreement on a mechanism to ensure coordination is reached as soon as possible.

It is submitted that such a mechanism should address coordination structures and personnel, as well as cross-cutting project activities.

A. Shared structures/personnel

As indicated above, although the two Project Coordination Units will be in different locations, a number of the staff based in Nairobi will be shared between the projects including a Finance Officer, a Procurement Officer and a Technical Officer.

It is also suggested that from 2018 there should be a Joint Project Steering Committee.

Similarly, National Steering Committees and other structures should cover both projects. Moreover, as proposed above, there should be a National Project Manager to drive and oversee the implementation of both projects.

Proposed Terms of Reference for the National Project Managers are included in Appendix 5 of the Background Document for the 1st WIOSAP PSC Meeting.

B. Shared activities

Activities which are shared by SAPPHIRE and WIOSAP include:

- Marine Spatial Planning
- Ecosystem monitoring
- Regional water quality indicators/standards
- Evaluation of ecosystem goods and services
- Stress reduction related to critical habitats
- Strengthening Science-based Governance/establishment of a Science-Policy Platform
- Data and information sharing within the region
- Capacity building and training
- Implementation of community/local level pilot/demonstration projects.

It is proposed that for each of these cross-cutting activities the projects should:

- Establish Joint Working Groups;
- Develop and implement a Joint Workplan (a preliminary example of this for MSP can be found in Annex 2).

With regards the selection of pilot/demonstration sites it is recommended that this is undertaken jointly to ensure that there is an equitable spread of sites across the participating countries. It is noted that WIOSAP has already done some work around selection criteria and a process for selection of these sites.

5. SAPPHIRE YEAR 1

The original time-frame for the SAPPHIRE project was September 2016 to March 2022. Given the delays in approval of the project, it is proposed that the timeframe be adjusted to reflect a starting date of January 2018 and an end date of June 2023.

The proposed priorities for SAPPHIRE Year 1 (2018) include:

1. The establishment of the Project Coordination Unit;
2. Agreement on a mechanism for collaboration and cooperation between SAPPHIRE and WIOSAP – in terms of both structures, personnel and cross-cutting project activities – and implementation thereof;
3. Establishment of other project structures (eg. Project Steering Committee, SAP Policy/Implementation Steering Committee, Scientific and Technical Advisory Group (STAP) and associated Working Groups);
4. Joint PSC meeting with WIOSAP;

5. Work on the Regional and National Monitoring Programmes should be initiated. It is proposed that a consultant be appointed to develop a monitoring proposal (covering both WIOSAP and SAPPHIRE requirements (deliverable 1.2.1 of SAPPHIRE)) and that these proposals then be considered and adopted at a STAP workshop;
6. A joint workshop on the Science to Governance Mechanism (see deliverable 1.2.3 of SAPPHIRE ProDoc) needs to be held with WIOSAP/Nairobi Convention – noting that Nairobi Convention structures have already made substantial towards establishing a Science to Policy Platform;
7. Establish Joint Working Groups on all cross-cutting activities and agree on Joint Workplans: for example, a Working Group on Marine Spatial Planning, adopt and implement a Joint Workplan on Marine Spatial Planning including a review of existing initiatives in the region;
8. Guidelines on the provision of support to partners for SAP implementation need to be developed and adopted;
9. The agreement with the World Ocean Council (WOC) needs to be revisited noting that it is anticipated that WOC will play a key role in Component 3;
10. A High Seas Policy Development (HSPD) Working Group should be established noting that activities under this component may need to be revisited in light of recent developments on ABNJ under UNCLOS;
11. WIOSEA and the agreements signed between ASCLME and a wide range of organisations need to be revisited and a decision taken on the way forward;
12. At the national level, National Action Plans to address policy, legal and institutional reforms (based on the MEDAs developed during ASCLME) need to be drafted and implementation initiated;
13. Agreement needs to be reached on the criteria for the selection of pilot/demonstration sites (noting that WIOSAP has already done considerable work on this);
14. A Regional Capacity Building and Training Programme needs to be developed based on priorities identified during ASCLME and incorporating WIOSAP and SWIOFC requirements.

ANNEX 1

SAPPHIRE Component	SAPPHIRE Outcome	Deliverables
Component 1: Supporting Policy Harmonization and Management Reforms towards improved ocean governance	Outcome 1.1 : Policy, legislative and institutional reforms and realignment in support of the SAP are implemented at national and regional level as appropriate, with emphasis given to strengthening and supporting existing processes and mechanisms including regional bodies (such as Conventions, Commissions, and Regional Scientific Bodies). Coordination and management mechanism are strengthened at both national and regional levels	Del. 1.1.1: Regional SAP Implementation Steering Committee Del.1.1.2: Regional SAP Scientific and Technical Advisory Panel Del.1.1.3: National Intersectoral Committees Del.1.1.4: National Technical Committees Del.1.1.5: National Action Plans (based on MEDAs) & implementation of priority legislative, policy & institutional reforms
	Outcome 1.2: Technical and institutional capacity developed to deliver Knowledge-Based Governance approaches by delivering scientific results to management and policy makers for adaptive management decision-making	Del.1.2.1: Establishment & harmonisation of national & regional Ecosystem Monitoring Programmes Del. 1.2.2: Adoption of water quality standards Del. 1.2.3: Definition and implementation of Science-to-Governance mechanism Del.1.2.4: Standardisation of approach to evaluation of ecosystem goods and services – building on existing initiatives Del.1.2.5: Develop Marine Spatial Planning as a regional tool at various levels
	Outcome 1.3: Collaborative and cooperative mechanisms agreed and strengthened between national, regional and global partners and stakeholders	Del.1.3.1: Agreements on SAP Implementation Del.1.3.2: Consolidation of WIOSEA Del.1.3.3: Support for scientific/LME meetings/conferences
Component 2 Stress Reduction through Community Engagement and Empowerment in	Outcome 2.1: Integrating the Ecosystem-based Management approach into Local Economic Development Plans at selected communities Pilot level and stress reduction demonstrated and captured for replication (including community stakeholder engagement and awareness of LME Goods and Services	Del.2.1.1: Establishment of WG to drive LED-EBM Demo sites Del.2.1.2: Implementation of LED-EDM Demo site projects

SAPPHIRE Component	SAPPHIRE Outcome	Deliverables
Sustainable Resources Management	Outcome 2.2: Stress reduction through ecosystem-based practices among artisanal and subsistence fisheries	Del.2.2.1: Review of small-scale fishing communities & interventions Del. 2.2.2: Selection of 4 small-scale fishing communities for pilot projects Del. 2.2.3: Implementation of 4 pilot projects
Component 3 Stress Reduction through Private Sector/Industry Commitment to transformations in their operations and management practices	Outcome 3. Private Sector engagement and participation in SAP implementation, particularly with and through the WOC, and through risk reduction and contingency response mechanisms using public-private sector partnership agreements along with regional partners (Nairobi Convention, WWF, IUCN, etc.). Furthermore, facilitate the adoption and implementation of mechanisms which would aim to facilitate Private Sector engagement in SAP implementation, ecosystem monitoring and associated stress reduction activities. The Private Sector will work with SAPPHIRE and its partners to ‘mainstream’ the ecosystem approach into their daily activities so as to reduce and mitigate impacts on EQOs.	Del.3.1.1: Development of Public-Private Partnerships to facilitate SAP implementation Del.3.1.2: Involve industry in data capture, research and monitoring Del. 3.1.3: Private sector support to SAP implementation through mainstreaming of ecosystem approach into their activities Del.3.1.4: Facilitate links between PPPs and IGOs, NGOs and regional projects Del. 3.1.5: Reduction of impacts from oil and gas sector (SEA, Regional Response Centre)
Component 4 Delivering best practices and lessons through innovative ocean governance demonstration	Outcome 4.1: Identifying Innovative Management options for High Seas areas within LMEs	Del.4.1.1: Development of partnerships around management of adjacent High Seas/ABNJ Del.4.1.2: Implementation of activities agreed under 4.1.1 Del.4.1.3: Identification of innovative management options for adjacent High Seas areas
	Outcome 4.2: Demonstrating effective ocean policy implementation with emphasis on marine spatial planning, intersectoral cooperation, adoption of a blue ocean economy approach, innovative management mechanisms and capture of	Del.4.2.1: Governance mechanism for Joint Management Area (Seychelles & Mauritius/ Mascarene Plateau) – being implemented as a separate project. Del.4.2.2: Implementation of Ocean Policy in South Africa Del.4.2.3: Marine Spatial Planning within a Blue Economy framework.

SAPPHIRE Component	SAPPHIRE Outcome	Deliverables
	lessons for transfer and replication	
Component 5 Capacity Development to Realise improved ocean governance in the WIO region	Outcome 5.1 Capacity for improved Ocean Governance strengthened through training and support	Del. 5.1.1: Capacity Building and Training Programme adopted Del.5.1.2: Identification of funding & implementation of CB & T Programme Del.5.1.3: Support for involvement in IndOOS & IOGOOS & related initiatives

ANNEX 2
(indicative only)

Marine Spatial Planning	Responsibility	2017	2018	2019	2020
DELIVERABLES					
WIOSAP A.1.1.1 Development of MSP plans for 5 sites					
SAPPHIRE Del.1.2.5 - MSP as a regional tool					
SAPPHIRE Outcomes 4.1 & 4.2 - Innovative OG options					
SAPPHIRE Del. 4.2.3 - LED/MSP demo sites					
SAPPHIRE Del. 5.1.2 - Capacity building					
ACTIVITIES					
MSP as a regional tool					
i) Establish Regional WG on MSP	WIOSAP & SAPPHIRE				
ii) Review of existing plans/projects to establish reg baseline	WIOSAP & SAPPHIRE				
ii) Develop regional methodology/best practice for MSP	SAPPHIRE /consultant				
iii) Support incorporation of MSP into national legislation	SAPPHIRE /consultant				
v) MSP extended to full LME (including ABNJ/HS)	SAPPHIRE, WIOSAP & SWIOFish				
vi) MSP applied in JMA area	JMA Project PMU				
Capacity building					
i) Training on MSP	NCS (WIOSAP) + partners			Nov-17	

Marine Spatial Planning

ii) Assess training needs based on MEDAs (ASCLME)

Responsibility

PMU (SAPPHIRE)

iii) Regional and national training

iv) Support for MSP exercises

Demo sites

i) Develop/adopt selection criteria

ii) Call for proposals

iii) Selection of pilot sites

iv) Implementation

v) Provision of technical support (GIS, remote-sensing etc)

PMU, WG on MSP

WIOSAP & SAPPHIRE

WIOSAP & SAPPHIRE

WIOSAP & SAPPHIRE

2017

2018

2019

2020

