

Some problems may be best addressed by policy instruments that **engage communities and all stakeholders**



Promoting **more sustainable fisheries** requires **several policy instruments**



Small-scale fisheries support the livelihoods of between **58 million and 120 million people**

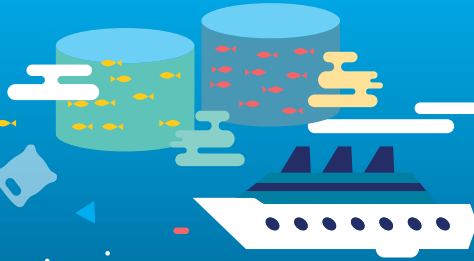


Policy coherence and integration are important in **addressing impacts of threats** to support the durability of marine ecosystems

Fish provide **3.1 billion people** with over **20 %** of their dietary protein



The collective value of **coral reefs** has been estimated at **US\$29 billion** annually



Cost of **cleaning beaches** is estimated at **US\$735 million** annually

