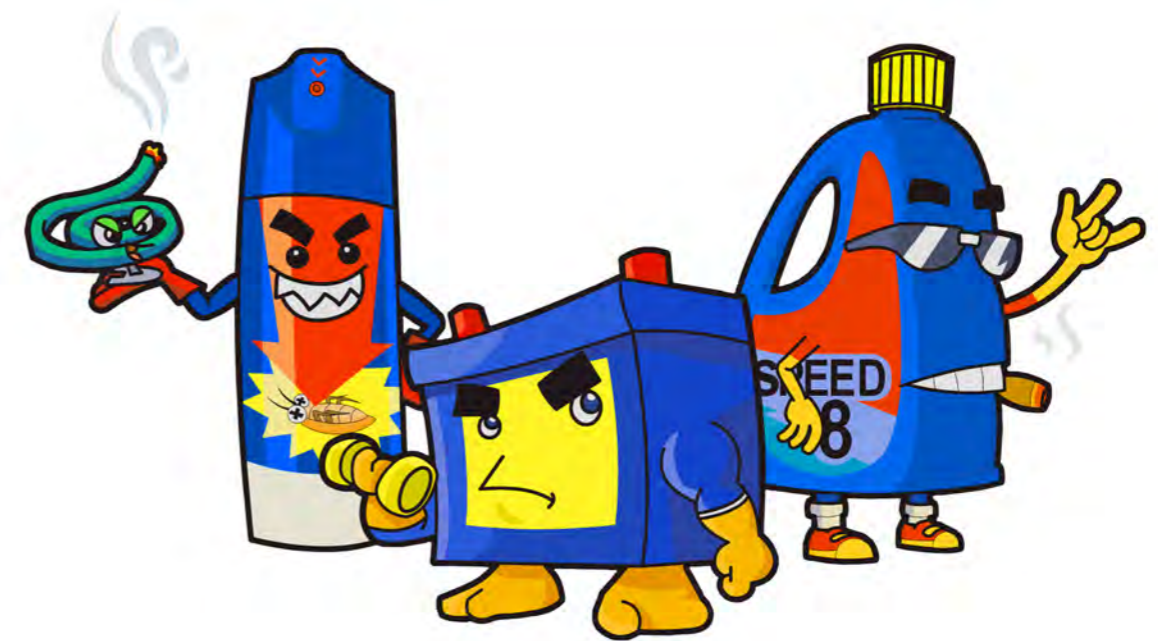




TOXICOLOGY IN THE CLASSROOM

WORKBOOK

TOXICOLOGY IN THE CLASSROOM



WORKBOOK

What are Chemicals?

Identify the chemicals by labelling the correct spots.



Hint: found in water



Hint: available in air



Hint: needed for photosynthesis

Copyright © United Nations Environment Programme, (year 2012)

This publication may be reproduced in whole or in part and in any form for educational or non-profit purposes without special permission from the copyright holder, provided acknowledgement of the source is made. UNEP would appreciate receiving a copy of any publication that uses this publication as a source.

No use of this publication may be made for resale or for any other commercial purpose whatsoever without prior permission in writing from the United Nations Environment Programme.

Disclaimer

The designations employed and the presentation of the material in this publication do not imply the expression of any opinion whatsoever on the part of the United Nations Environment Programme concerning the legal status of any country, territory, city or area or of its authorities, or concerning delimitation of its frontiers or boundaries. Moreover, the views expressed do not necessarily represent the decision or the stated policy of the United Nations Environment Programme, nor does citing of trade names or commercial processes constitute endorsement.

DTI/1585/GE

[September 2012]

What are potentially dangerous chemicals?

Identify and circle 15 products that contain chemical substances.



What is poisoning?

Draw a line that match (?). HINT: poisonous.



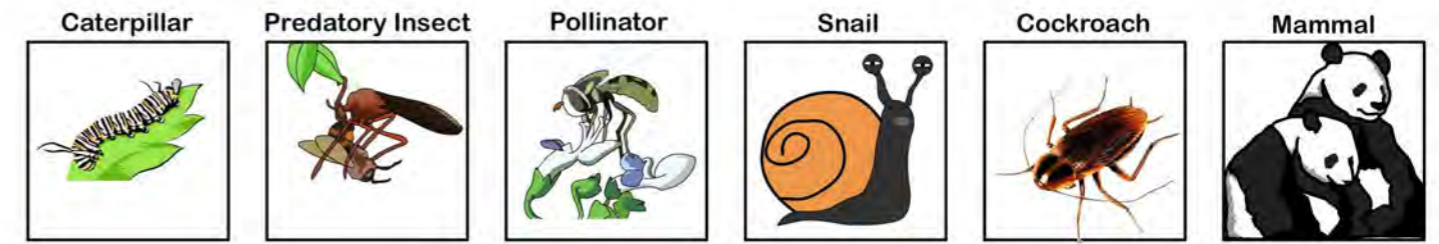
What is toxicology?

Mark **X** on the item that consist 'very toxic chemicals'.



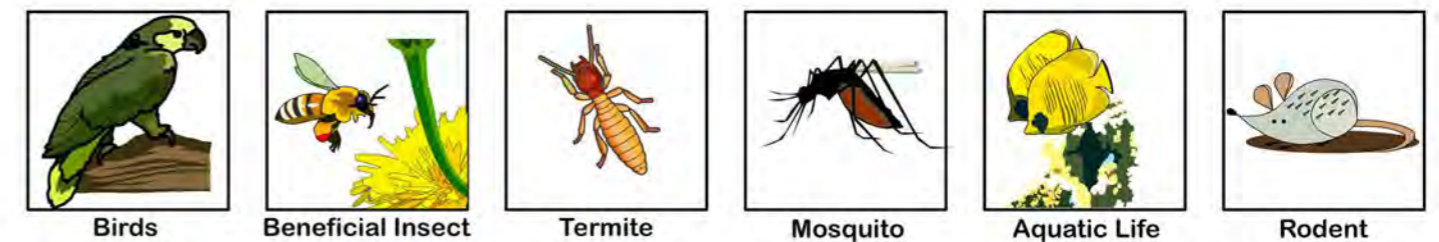
What is a pest?

Draw a line that match the correct organism.



PEST ORGANISM

NON TARGET ORGANISM



What is a pesticide?

Draw a line that match the correct answer.



●

● Insecticides



●

● Bleach



●

● Rodenticides



●

● Pesticides



●

● Fungicides

Use of pesticide?

Circle the correct pesticide that kills mosquito.



Effects of pesticides on people

Rearrange the alphabet to find the correct answers.



N
ASUEAN



S
HISEVIRNG



D
ZNSDIISEZ



V
OVIMITNG



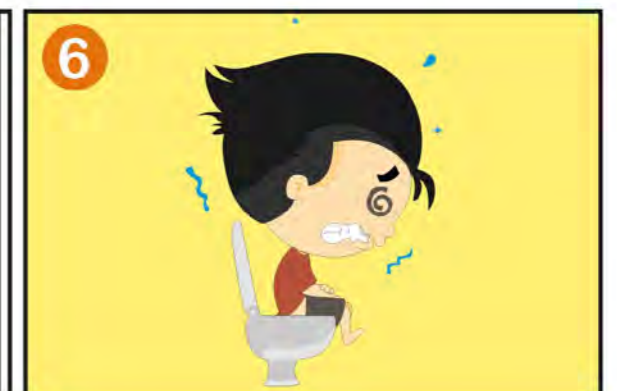
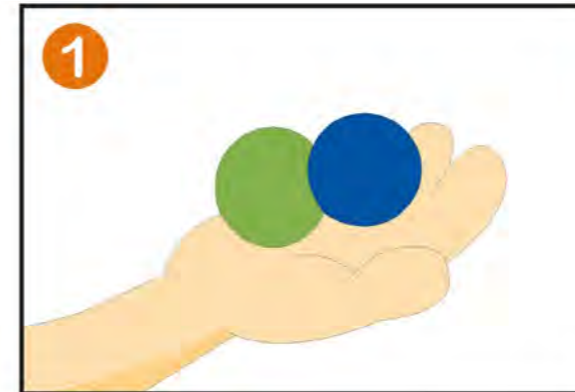
I
SNLISLE



W
ESEWNAKS

What to do in case of poisoning?

Jack just realized that he had mistaken a roach ball and a candy only after eating it.



What to do in case of poisoning?

Based on the comic in previous page, What should Jack do?
Give an X inside the circle

See a doctor right away and mention what pesticide he had been exposed to.

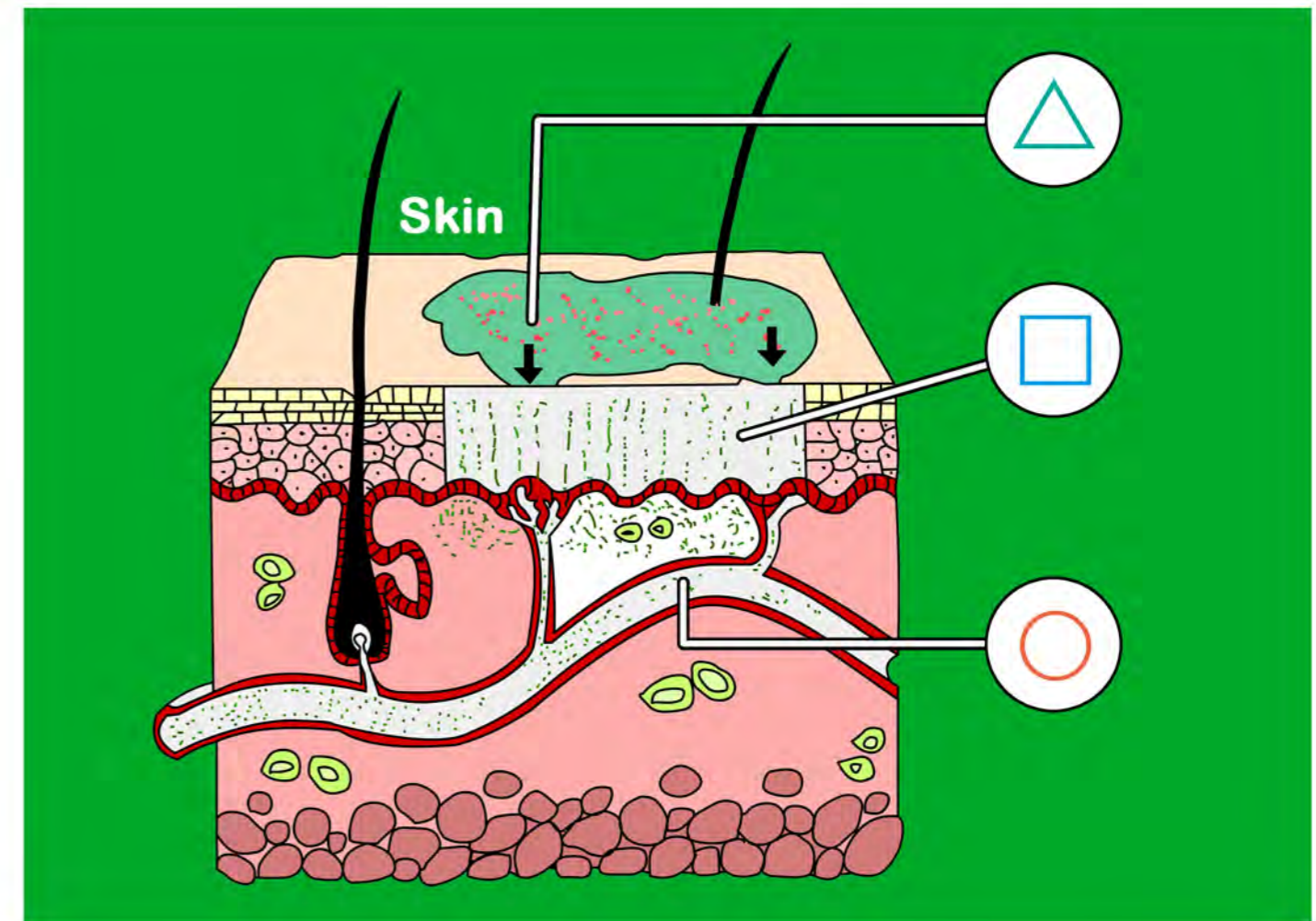
Wait until the pain go away and take a glass of water.

Don't worry about it cause pesticide is not harmful.



How poison can get into your body?

Match the correct process showing how poison can get into the body.



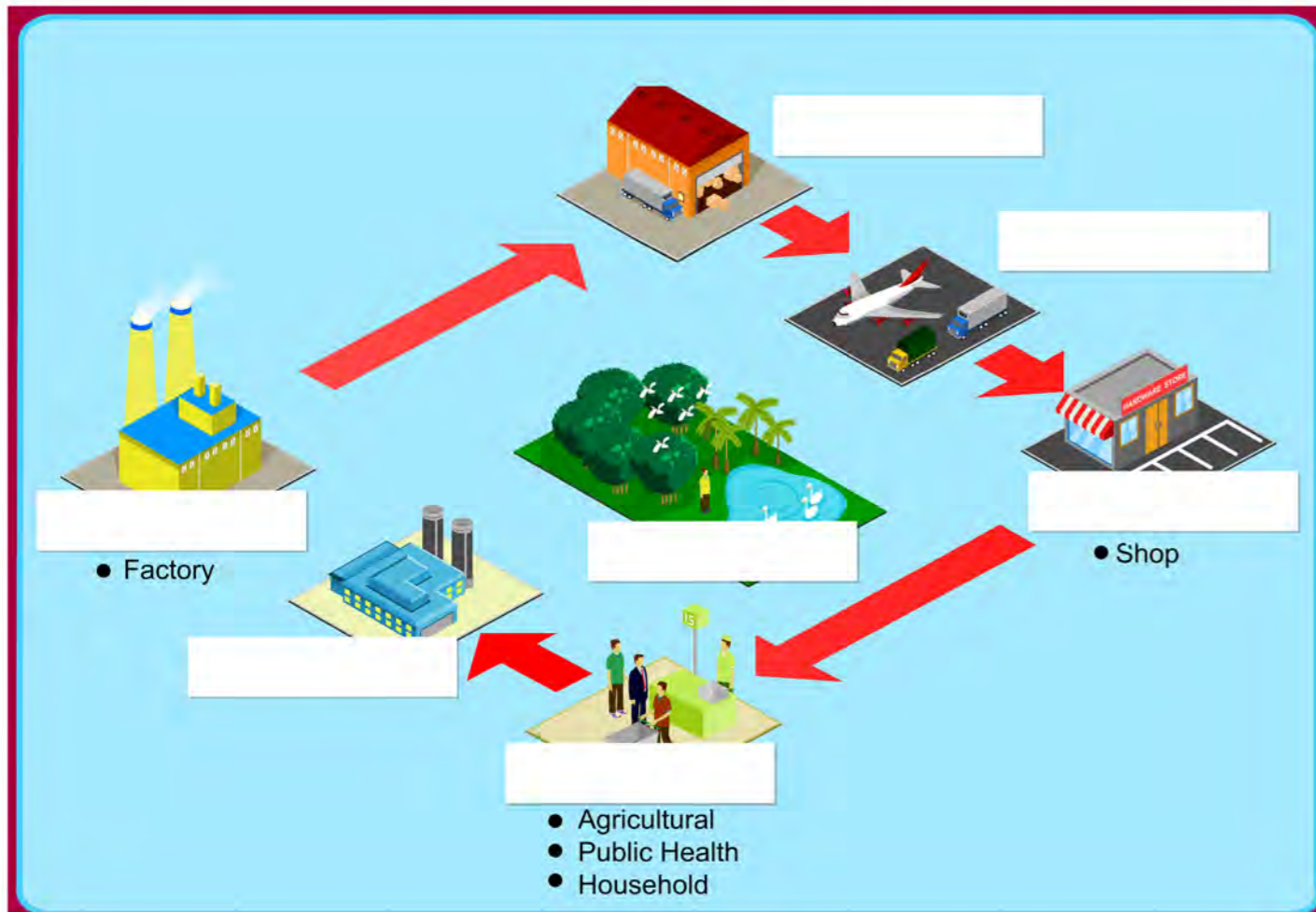
Poison in the blood

Poison passing through body tissue

Poison on the skin

Pathways through the environment

Fill in the blanks.



ANSWERS

Production

User

Distribution

Storage

Disposal

Environment

Transport

How to identify a toxic product & understand the label?













How to identify a toxic product & understand the label?

How to identify a toxic product & understand the label?



Fill in the blank with the correct answer.

FLAMMABLE MATERIALS	HIGH VOLTAGE	STRONG MAGNETIC FIELD
EXPLOSION RISK	RADIATION	LASER RADIATION
HIGH TEMPERATURES	CORROSIVE	BIOHAZARD

	_____	
	_____	
	_____	
	_____	
	_____	

Risky situations with toxic chemicals/pesticides

Tick in situations where people can be exposed to pesticides/chemicals.



If empty pesticide containers or bottles are used for other purposes, such as storing milk.



Playing football with friends.



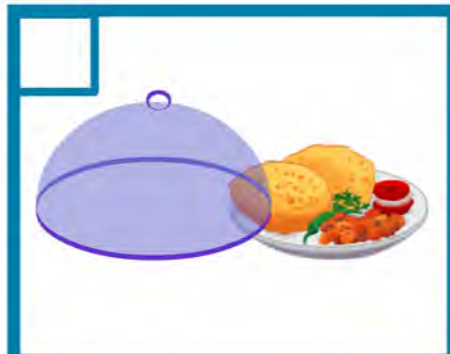
Food is contaminated by a leaking chemical containers during transportation or storage.



Sleeping.



Pesticides are mistaken for water or drinks.



Food is left uncovered during indoor residual spraying in public health operations.



Used or empty pesticide containers left around where children might play with them.



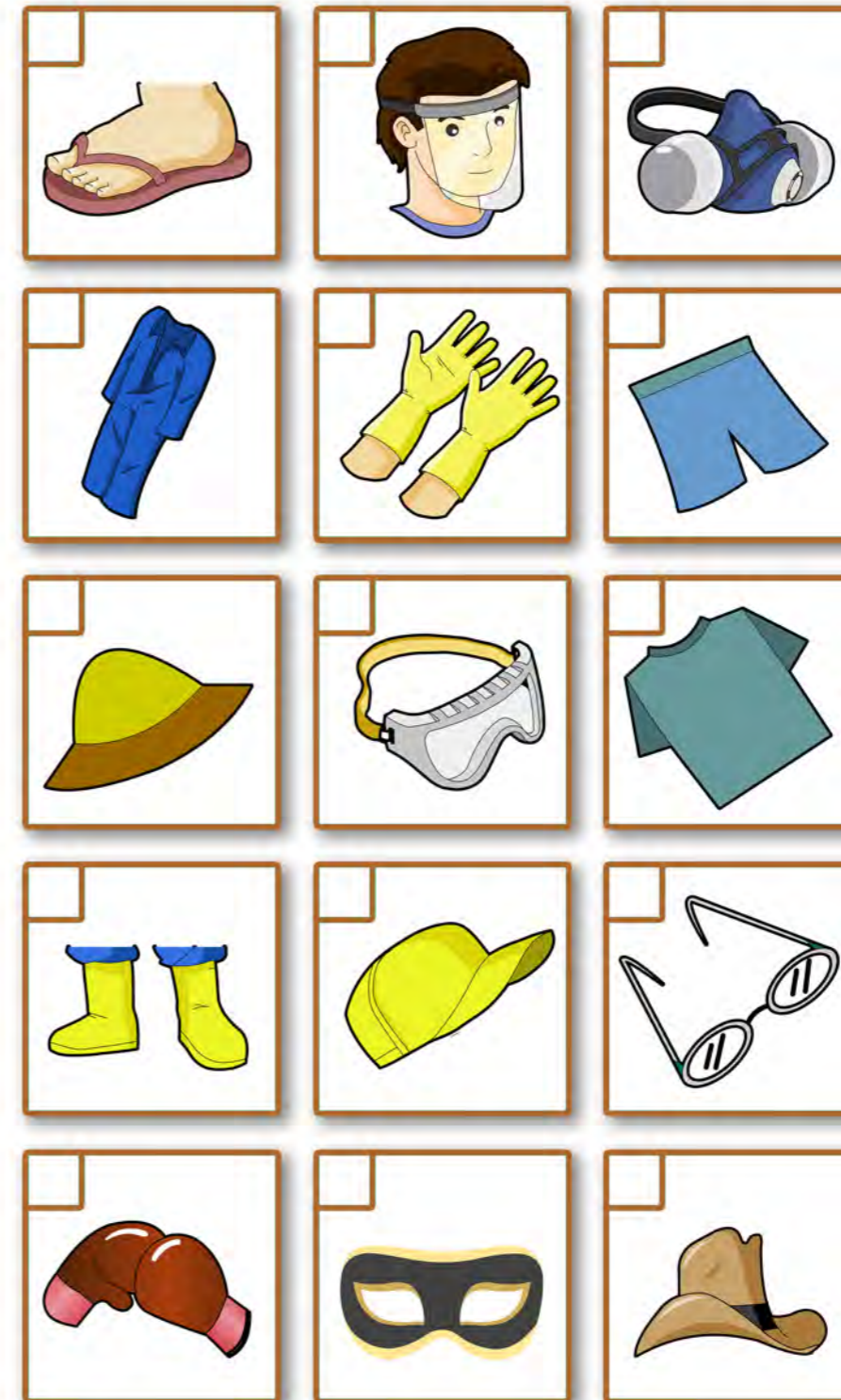
Eating on the clean table.



Equipment and/or pesticides-contaminated clothes which are accessible to children.

Personal protection when using pesticides

Tick the correct personal protective wear when using pesticides.



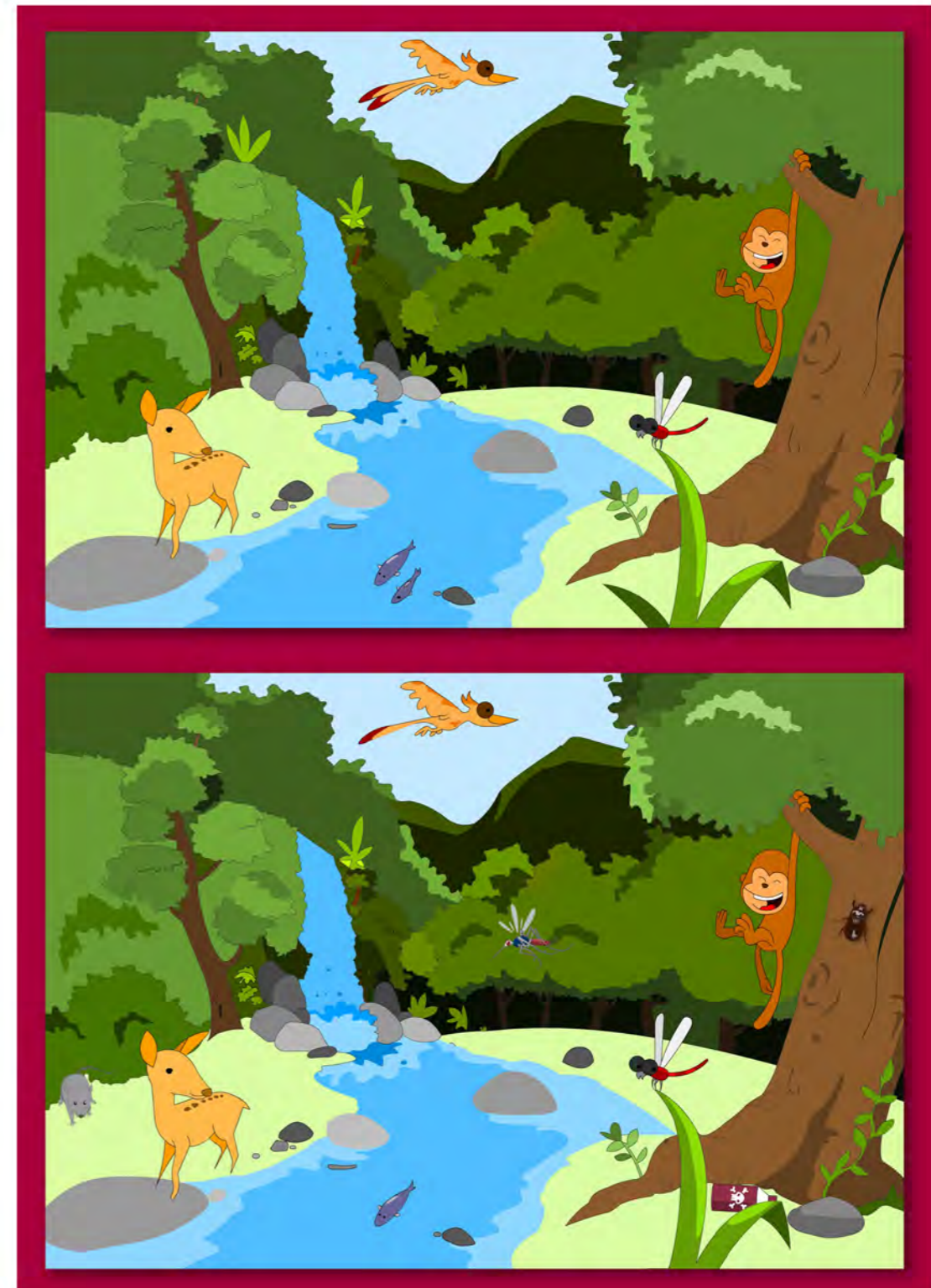
Protecting younger children, sisters and brothers

Enter the number in the box for correct pieces of puzzle below.



Protecting the environment

Spot 8 differences in the picture below.





Rina has just finished helping her mother painting their house gates.



She wanted to throw away the paint waste near her house.



Rina's mother saw her act.

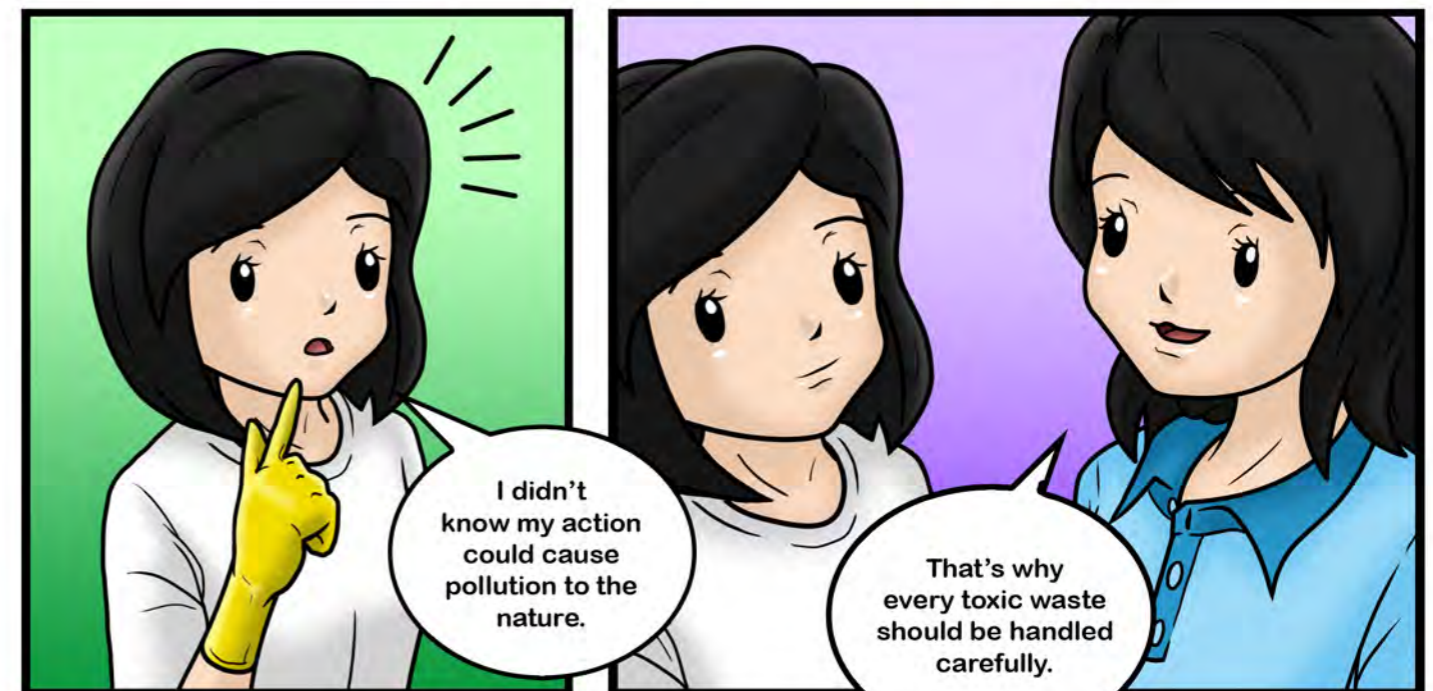


Rina's mother prevented her from throwing away the paint waste.



When toxic wastes are dumped without care and not disposed of correctly, they can cause severe health problems and death and also contaminate water and land for decades.

Paint waste is an example of a toxic waste.



I didn't know my action could cause pollution to the nature.

That's why every toxic waste should be handled carefully.

Notes

Notes



1972-2012:
Serving People
and the Planet

www.unep.org

United Nations Environment Programme
P.O. Box 30552 Nairobi, 00100 Kenya
Tel: (254 20) 7621234
Fax: (254 20) 7623927
E-mail: unep@unep.org
web: www.unep.org



For more information, contact:

UNEP/DTIE Chemicals Branch
United Nations Environment Programme
11-13, Chemin des Anémones
1219 Châtelaine
Geneva, Switzerland
E-mail: chemicals@unep.org

National Poison Centre
Universiti Sains Malaysia
11800 Penang
Malaysia
Tel: +604-657 0099
Fax: +604-656 8417
Email: rahmat@usm.my

DTI/1585/GE