



Global Partnership
on Marine Litter

Closing the Plastic Waste Data Gap: An Introduction to the Plastic Recovery Insight & Steering Model (PRISM)

Presented by the Alliance to End Plastic Waste

Nicholas Kolesch, Vice President for Projects, Alliance to End Plastic Waste
20 September 2021

The global plastic waste problem demands bold ambition

The Alliance translates commitment into action



Key principles guiding the Alliance

1. **Act now...** or risk lasting damage for future generations
2. **Collective action...** no organisation can tackle this alone
3. **Cross-value chain approach...** no single business sector can bring true system change
4. **A do-tank, not a think-tank...** discussion, policy, and public pledges are good, but we need real solutions and real investment

Convening stakeholders to advance real solutions to plastic waste:

- More than 60 companies from across the plastics value chain
- 5 Supporters contributing resources and capability
- A network of 10 like minded Strategic Allies committed to the cause

Four strategic pillars...



Infrastructure



Innovation



Education & Engagement



Cleanup

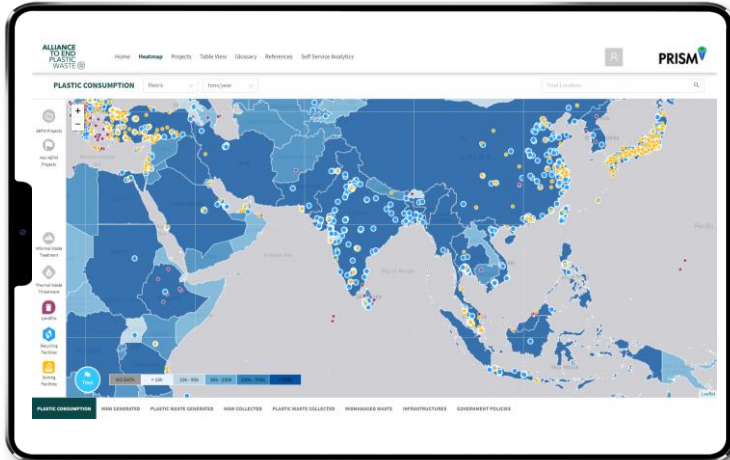


Global Partnership
on Marine Litter

Plastic Recovery Insight & Steering Model (PRISM)

A project convening partners and information to address the **plastic waste data gap**

PRISM 



- Municipal Solid Waste
- Plastic Waste
- Mismanaged Waste
- Infrastructure Types
- Volumes Generated & Collected
- Polymer Types
- Policies

Powered by

**ALLIANCE
TO END
PLASTIC
WASTE** 

IBM

A global open-source platform to **centralize and harmonize** plastic waste information, to **close the knowledge and data gap** across academia, industry, civil society, and policy-makers

- Systematic harmonisation and aggregation of data from disparate sources co-created with IBM Services in Singapore
- Global engagement and collaboration to align methodologies and standards/ definitions (e.g. IUCN/UNEP hotspot methodology)
- A key tool for any stakeholder active in addressing the plastic waste challenge, with sources collated from across the plastic and plastic waste value chain
- Envisaged robust independent governance process
- Access for all user groups including data providers, data verifiers and data users



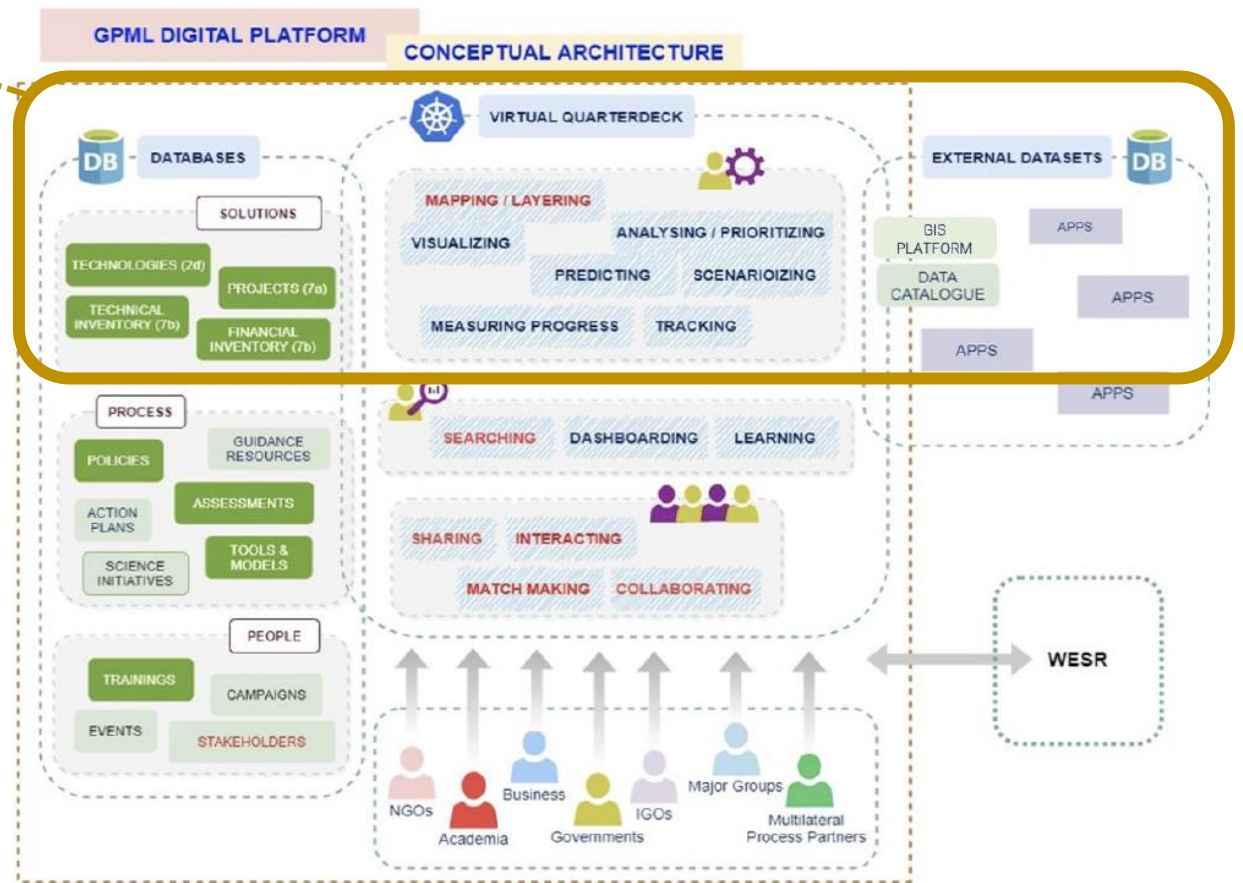
**Global Partnership
on Marine Litter**

PRISM could form a component of GPML Digital Platform

Aggregated database and interface to meet needs of the GPML Digital Platform

PRISM provides functionality to support several elements of the GPML conceptual architecture

- Database of **aggregated and processed data from multitude of sources**
 - More than 500 open-access sources processed to date
- **Mapping and visualising** multiple data sets, available via heatmaps and tables
- **Analytic tools** as basis for predictive **modelling** and **scenario development**
- **Connectivity to external datasets** to facilitate easy and structured data ingestion (APIs)
- Easily adaptable to the **Marine Litter and Plastic Pollution Ontology** being developed by UNEP GPML



Source: Concept Document, Global Partnership on Marine Litter Digital Platform, Draft external document for user and partner consultations, UNEP GPML Secretariat (by email 8 July 2021)

Thank you



Global Partnership
on Marine Litter

Nicholas Kolesch
Vice President for Projects
Alliance to End Plastic Waste

United Nations Avenue, Gigiri
PO Box 30552 – 00100 GPO Nairobi, Kenya

www.gpmarinelitter.org