

Not displaying correctly? [View it in your browser](#)



Latest news from the UNEP Global Mercury Partnership - June 2021 (Newsletter #4)

In this edition, learn more about call for comments on draft guidance on Customs Codes, upcoming meetings of the Mercury in Products and Mercury Waste Management Partnership Areas and recent events, including webinar on how to integrate Gender dimensions into ASGM National Action Plans and expert consultations on mercury from non-ferrous metals as well as from oil and gas. Meet new members of the Partnership, get insights on the call for applications under the Special Programme as well as on latest WHO publications on mercury and the Minamata Convention.

With our warm wishes,

The Secretariat of the UNEP Global Mercury Partnership

HIGHLIGHTS

DRAFT		
HS reference	Proposed additional codes	Description
Switches and relays		
8531.30.01		Switching switches and relay-assembled switches, for a voltage exceeding 1000V
	8531.30.01.30	Voice and break switches
	8531.30.01.90	Other
8531.30.11		Switches for rated current less than or equal to 1600A, not motor-start-off without arcing device (vacuum bottles or airpumps)
	8531.30.11.30	With added mercury
	8531.30.11.90	Other
8531.30.18		Disconnection and switches for rated current less than or equal to 1600A, and others with automatic arcing device except for contacts immersed in liquid medium
	8531.30.18.30	With added mercury
	8531.30.18.90	Other
8531.30.19		Other disconnection and switches for rated current less than or equal to 1600A
	8531.30.19.30	With added mercury
	8531.30.19.90	Other
8531.30.27		Switches for rated current greater than 1600A, and others with non-automatic arcing device
	8531.30.27.30	With added mercury
	8531.30.27.90	Other
8531.30.28		Switches for rated current greater than 1600A, and others with automatic arcing device except for contacts immersed in liquid medium
	8531.30.28.30	With added mercury
	8531.30.28.90	Other
8531.30.29		Special materials for switching, arcing, or making connections for a voltage exceeding 1000V
	8531.30.29.30	With added mercury

Draft guidance on the use of Customs Codes under the Minamata Convention available for comments until 19 July 2021. Developed pursuant to COP3 [Decision MC-3/3](#), it intends to provide a mechanism for countries wishing to use common customs codes for the implementation of Article 4 on mercury-added products. Input from all regions and stakeholders is encouraged.



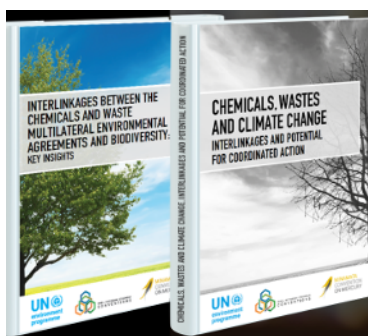
On 7 July 2021, from 1 pm to 3 pm CEST, the Mercury in Products Partnership Area will consider draft guidance on Customs Codes prepared for Minamata COP4. Partners will also discuss future work, organization of information sharing sessions in the coming months and ongoing work on mercury in products. For more information and to register, please [click here](#).



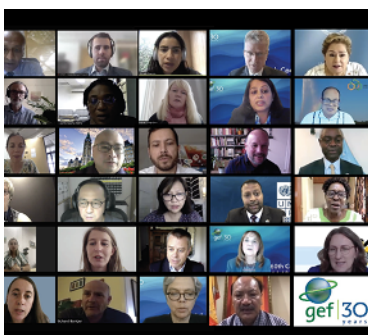
Area will hold its annual meeting on 8 July 2021, from 1 pm to 3.30 pm CEST. Amongst others, the meeting will discuss the Partnership Area Activity Plan for 2021 – 2023 and the way forward to conduct planned activities. For more information on how to participate, please [click here](#).



The Special Programme is currently accepting applications for funding under its 5th round of applications to support countries on their journeys toward healthier communities and ecosystems through improved chemicals and waste management. **Get more information** on how governments can apply for funding to support their chemicals and waste management projects.



New reports by the UN Secretariats of the Basel, Minamata, Rotterdam, & Stockholm conventions exploring **Interlinkages between Chemicals, wastes and climate change**, and **Interlinkages between the chemicals and waste MEAs and biodiversity**, putting the spotlight on the unsound management of chemicals and waste as key driver of biodiversity loss.



GEF Council adopted **Work Program** including extension of ISLANDS and planetGOLD programmes to new countries and 2 full-sized projects on chemicals & waste. In April, GEF CEO had approved **UNEP project on “Assessing the future contribution of the coal sector to the Minamata and Stockholm Conventions”**, to be jointly executed by the Coal Partnership Area leads, with expertise and input from the Area.

RECENT EVENTS



and Small-Scale Gold Mining (ASGM) organized on 17 June 2021 a webinar on **Integrating Gender Dimensions into National Action Plans for ASGM** to provide an overview of gender aspects related to the sector, explore challenges and discuss recommendations and best practices for integrating gender dimensions.



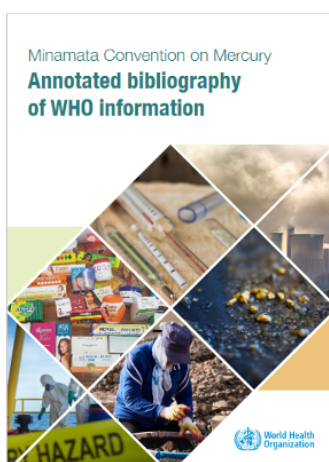
Online Expert consultations on **mercury from non-ferrous metals (30 April 2021)** and **from oil and gas (10 May 2021)** were held as part of the call for input to the draft study reports developed in the context of the Partnership, providing an opportunity for participants to share additional knowledge, data and best practice, and discuss suggestions for future work.

WELCOME TO OUR NEW PARTNERS

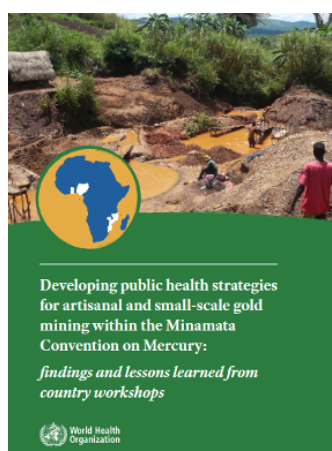
- **Adage Automation**
- **Laboratory of Molecular Pharmacology of the Federal University of Pará**
- **IPIECA**
- **Ministry of Environment of Gabon**

[INFORMATION ON BECOMING A PARTNER >>](#)

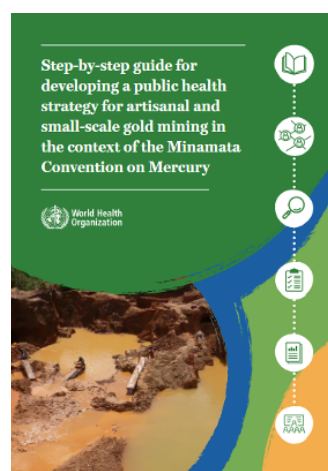
LATEST PUBLICATIONS / RESOURCES



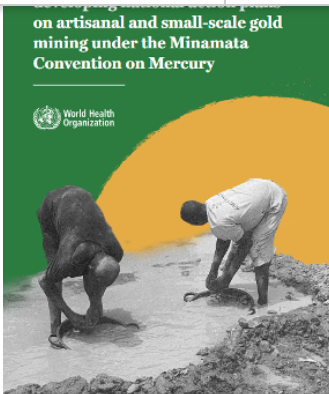
Minamata Convention on Mercury: annotated bibliography of WHO information, 2021



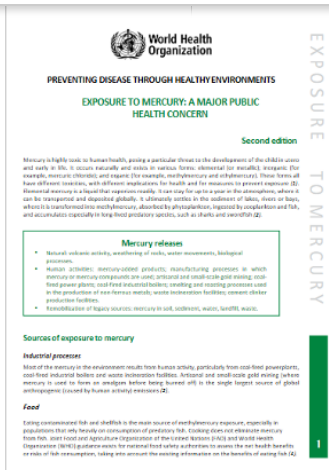
Developing public health strategies for artisanal and small-scale gold mining within the Minamata Convention on Mercury: findings and lessons learned from country workshops,



Step-by-step guide for developing a public health strategy for artisanal and small-scale gold mining in the context of the Minamata Convention on Mercury,



Addressing health when developing national action plans on artisanal and small-scale gold mining under the Minamata Convention on Mercury, WHO, 2019



Exposure to Mercury: a major public health concern, second edition, WHO, 2021



Human biomonitoring in artisanal and small-scale gold mining: ethical and scientific principles, WHO, 2021

[VIEW ALL PUBLICATIONS >>](#)

READ MORE ABOUT THE PARTNERSHIP AREAS

Artisanal and small-scale gold mining

Mercury releases from coal combustion

Mercury air transport and fate research

Mercury waste management

Mercury cell chlor-alkali production

Mercury supply and storage

Mercury in products

Mercury releases from the cement industry

[View this email in your browser](#)

Copyright © 2021 Secretariat of the UNEP Global Mercury Partnership

[Manage your subscription](#) or [Unsubscribe](#)

For more information visit [our website](#) or contact us [by email](#)

Our mailing address is:

Secretariat of the UNEP Global Mercury Partnership
Palais des Nations, 8-14 avenue de la Paix

[Add us to your address book](#)

