

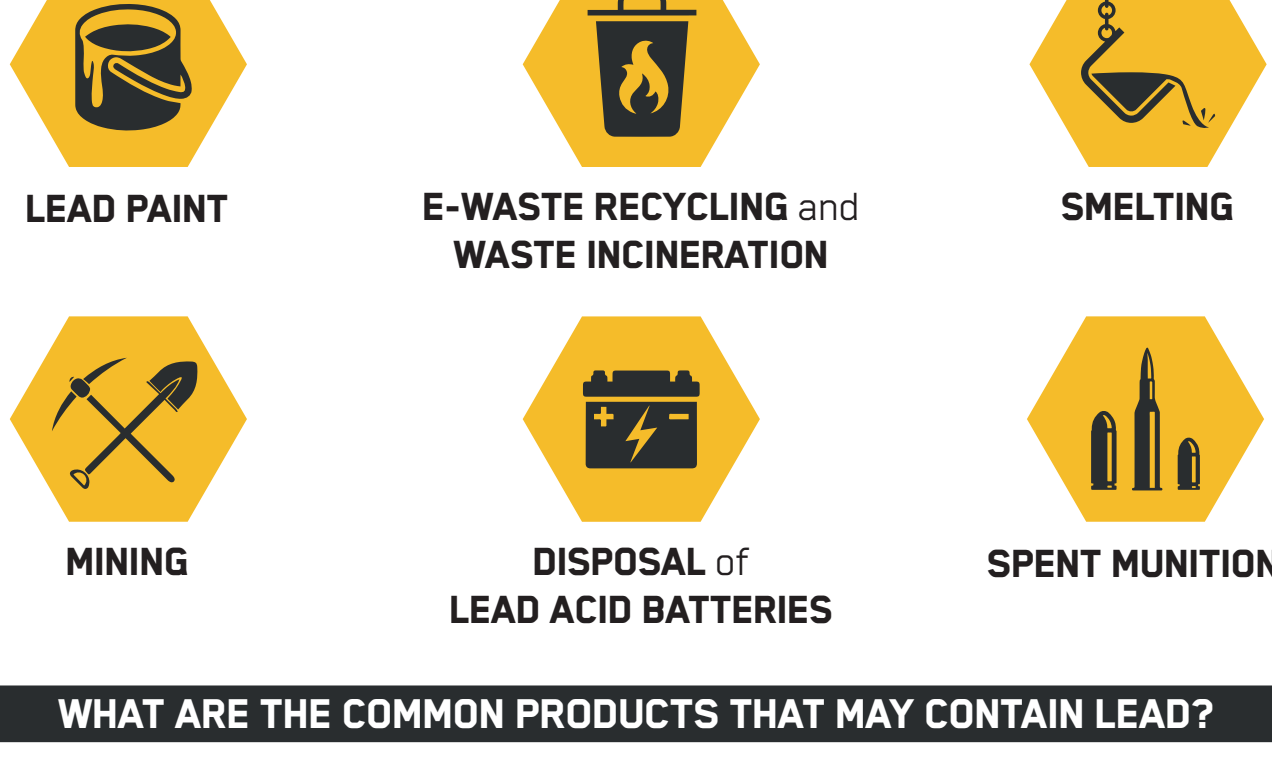


is a widely used metal that is harmful to human health and the environment

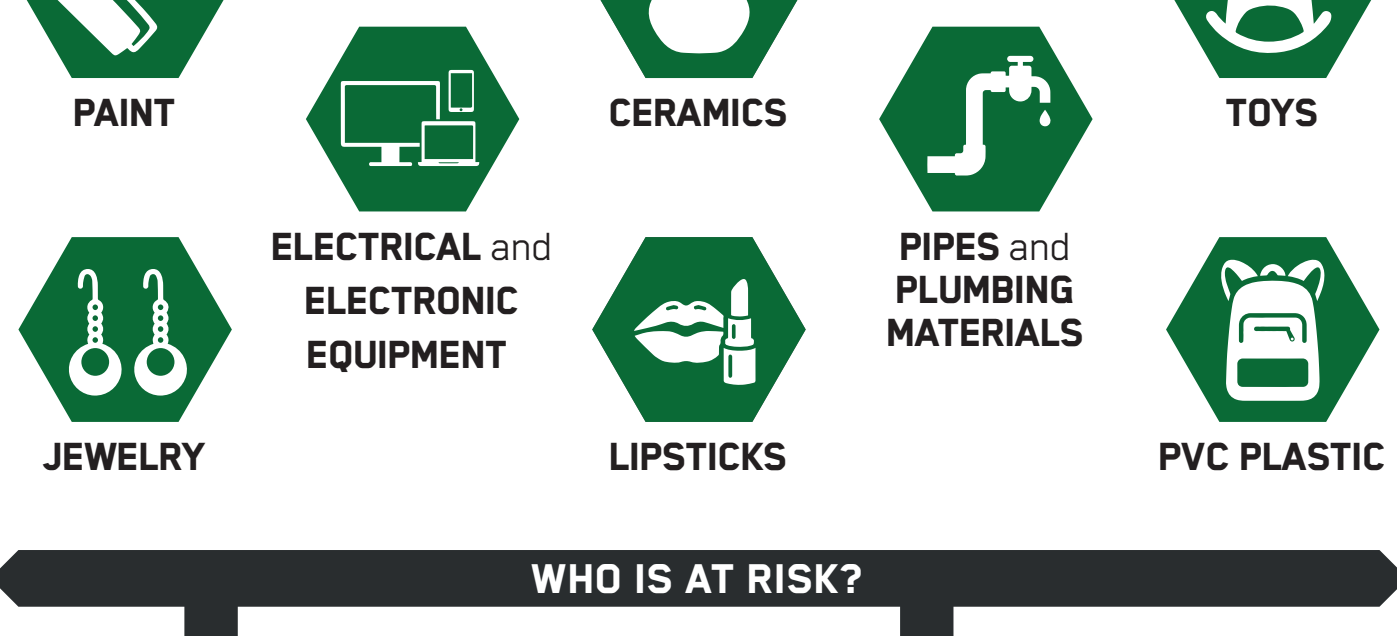
WHERE CAN YOU FIND LEAD?



WHAT ARE THE SOURCES OF LEAD IN THE ENVIRONMENT?



WHAT ARE THE COMMON PRODUCTS THAT MAY CONTAIN LEAD?



WHO IS AT RISK?



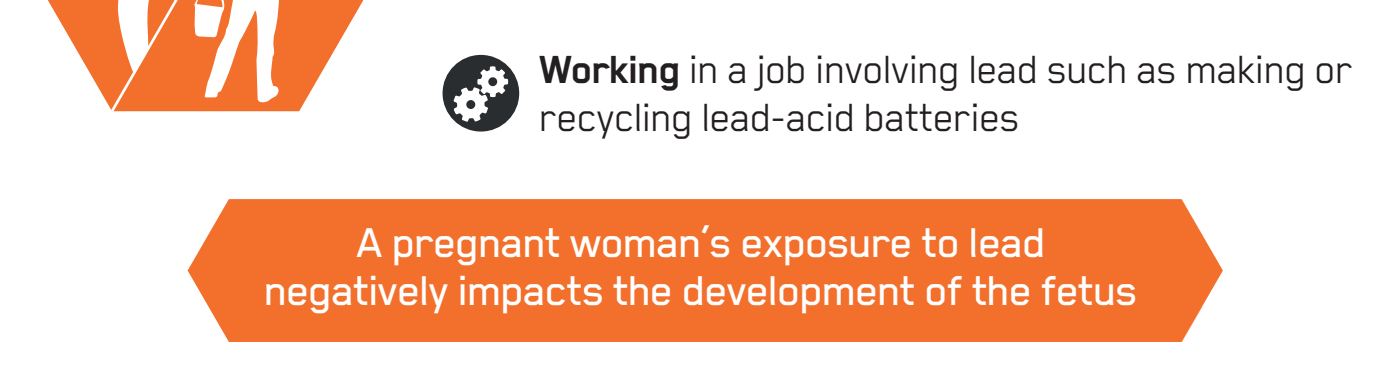
EXPOSURE TO LEAD IN CHILDREN LEADS TO



HOW ARE CHILDREN EXPOSED TO LEAD?



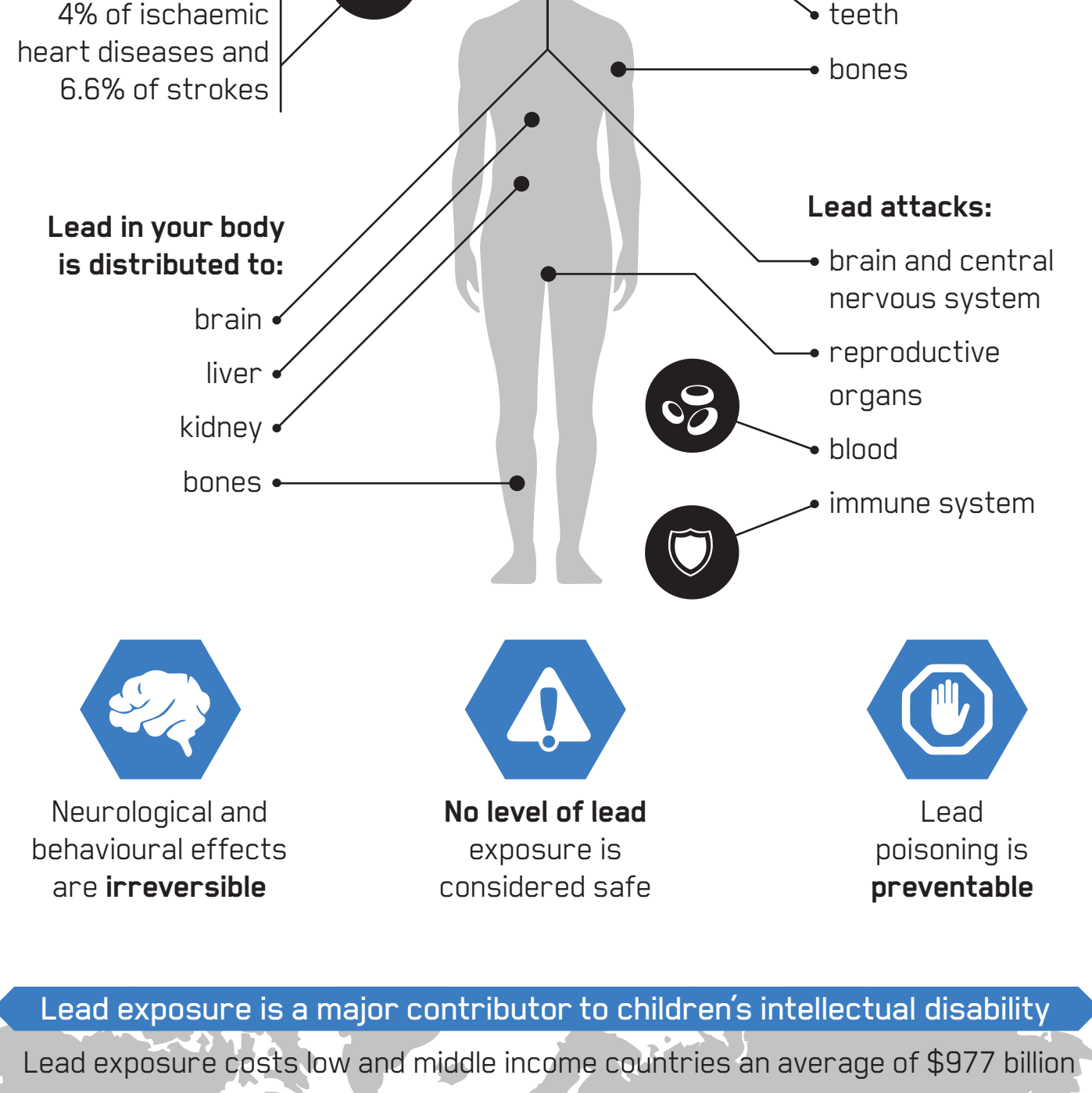
ADULTS MAY BE EXPOSED TO LEAD BY:



A pregnant woman's exposure to lead negatively impacts the development of the fetus

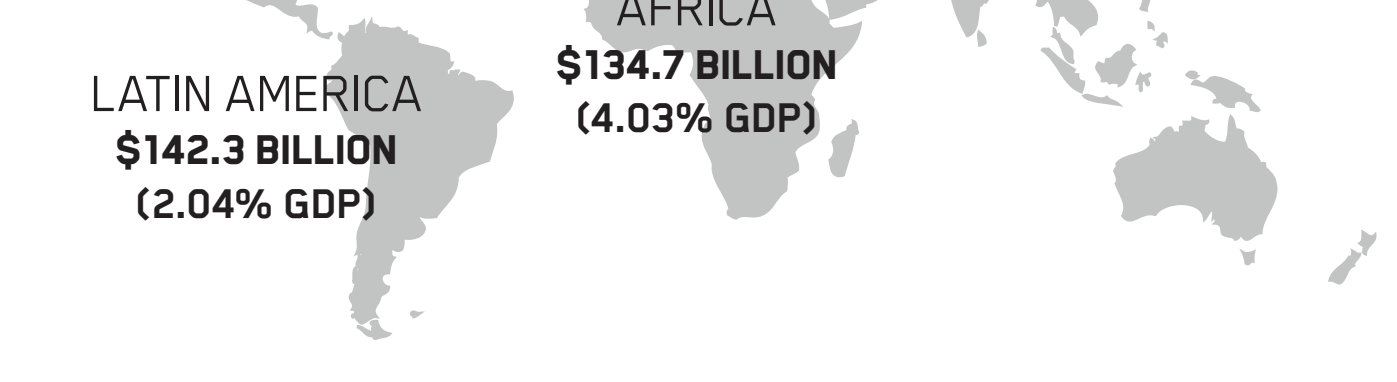
DID YOU KNOW?

Every year, approximately **800,000 people** die of **lead exposure** in developing countries



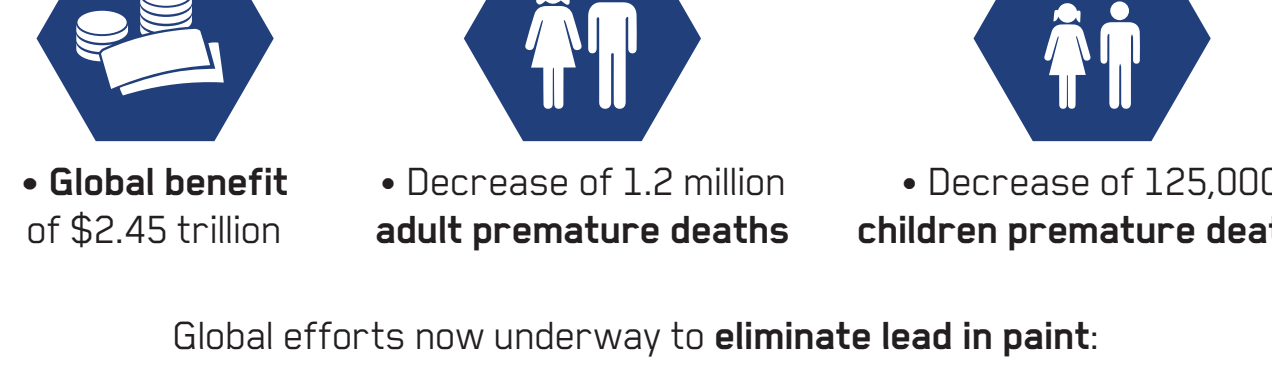
Lead exposure is a major contributor to children's intellectual disability

Lead exposure costs low and middle income countries an average of \$977 billion



CELEBRATING OUR ACHIEVEMENTS

Global elimination of leaded petrol resulted in annual:



Global efforts now underway to eliminate lead in paint:



WHAT CAN YOU DO?



#BANLEADPAINT

SOURCES

- World Health Organization
http://www.who.int/gho/phe/chemical_safety/lead_paint_regulations/en/
- Economic Costs of Childhood Lead Exposure in Low-and Middle-Income Countries
<http://www.med.nyu.edu/pediatrics/research/environmentalpediatrics/leadexposure>
- The Partnership for Clean Fuels and Vehicles
http://www.unep.org/Transport/New/PCFV/PCFV-Brochure-April2014_combined.pdf
- Global Report on the Status of Legal Limits on Lead in Paint
<http://unep.org/environmental-governance/Portals/8/documents/Limits-Lead-Paint-2016%20Report-Final.pdf>
- Tsai PL, Hatfield TH. The global benefits from the phaseout of leaded fuel. J Environmental Health. 2011; 74(5):8-14.
http://www.unep.org/transport/pcfv/PDF/Hatfield_Global_Benefits_Unleaded.pdf