



**Republic of Seychelles**

**MIGRATION & TOURISM STATISTICS  
2013**

**National Bureau of Statistics**

**2014 Edition**

## **PREFACE**

### ***Introduction***

*This is the 2014 edition in an annual series of Migration and Tourism Statistics.*

### ***Method of compilation***

*Visitors Statistics are obtained from immigration embarkation and disembarkation cards completed by all travellers, and they are analysed in accordance with World Tourism Organisation (UNWTO) recommendations.*

*Visitors are classified according to their country of residence rather than their nationality and detailed tables are presented in time series of at least five years.*

*Tables showing resident movement and migration are also presented.*

*The National Bureau of Statistics compiles tables relating to Hotel Statistics from information provided by hotels, guesthouses and self-catering apartments. Their co-operation and assistance is gratefully acknowledged.*

***National Bureau of Statistics (NBS)***

***April 2014***

## CONTENTS

		Page
	<b>Visitor Statistics 2013</b>	<b>1-2</b>
	Chart 1 (a) and 1 (b): Visitor arrivals by region of residence, 2008 - 2013	3
<b>Tables</b>		
1	Visitors and cruise ship passengers, 2003 - 2013	4
2	International migration and tourism, 1997 - 2013	5
3	Visitor arrivals and average length of stay, 2007 - 2013	6
4	Visitor arrivals by purpose of visit, 2010 - 2013	7
5	Visitor statistics: Quarterly summary, 2004 - 2013	8
6	Visitor arrivals by country of present residence, 2009 - 2013	9
7	Visitor arrivals by country of residence and month, 2013	10-14
8	Visitor Arrivals by Geographical Region - 2013	15
9	Visitor arrivals by mode of transport, 2012- 2013	16
10	Visitors stay by location, 2012 - 2013	17
11	Visitors stay by accommodation, 2012 - 2013	18
12	Residential status and intention of migrants, 2009 - 2013	19
13	Departure of residents by purpose of visit, 2013	20
14	Departure of residents by continent of destination, 2013	21
15	Age and sex distribution of migrants, 2013	22
16	Resident departures by country of destination, 2013	23-24
17	Resident departures by purpose of visit, 2013	25
18	Beds, bed-nights occupied and bed-occupancy rates, 2008 - 2013	26
19 (a-d)	Beds available and occupied by type of accommodation and location - 2013	27
20 (a-d)	Rooms available and occupied by type of accommodation and location - 2013	28
<b>Charts</b>		
	Chart 2: Visitor arrivals (January - December) 2009 - 2013	29
	Chart 3: Visitor arrivals by leading markets (January - December) 2011 - 2013	30
	Chart 4: Visitors stay by location (January - December) 2013	31
	Chart 5: Average number of beds available by type of accommodation and location - 2013	32
	Chart 6: Bed-nights occupied, 2011 - 2013	33

## Visitor Statistics -2013

1. Two hundred and thirty thousand two hundred and seventy two (230,272) visitors arrived in Seychelles during 2013. This represents an increase of 11% over 2012.
2. Of the 230,272 visitors who arrived in Seychelles during 2013, 229,609 (99.7%) arrived by air and 663 (0.3%) arrived by sea. Of those arriving by air, 228,572 (99.5%) were visitors while 1037 (0.5%) were transit visitors. Of those arriving by sea, 521 (79%) were visitors while 142 (21%) were in transit (Table 9).
3. In comparison to 2012, increases were recorded in visitors from our main European markets. The number of visitors from France increased by (11%), Germany (19%), UK & Eire (12%), Switzerland (13%), and Russia (6%). Decreases from visitors were from Italy (-7%) and Austria (-2%). (Table 6).

### Length of stay (Tables 1 and 3)

4. The average length of stay in 2013 was 10.2 nights, compared to 9.9 nights in 2012. The number of visitor nights in 2013 was 2,348,774. This represents an increase of 14% over 2012.

### Purpose of visit (Tables 4 and 5)

5. Ninety-three percent (93%) of visitors who arrived in 2013 came for a holiday, 4% for business or combining business with a holiday and 1% were in transit. Comparing 2013 to 2012 the number of visitors on holiday increased by 11%, for business or combining business with a holiday 31%, and transit visitors decreased by 11%.

### Country of residence (Tables 5-8)

6. In 2013, 69% of the visitors came from Europe, 12% from Africa, 16% from Asia and 3% from America. Compared to 2012, visitors from Europe increased by (10%), Africa (6%), Asia (17%), Oceania (40%) and America (10%).
7. The top ten markets in 2013 were:

Country	No. of visitors	% of total
France	35,765	15.5
Germany	33,489	14.5
Italy	21,767	9.5
Russia	14,367	6.2
UAE	13,895	6.0
South Africa	13,294	5.8
UK & Eire	12,617	5.5
Switzerland	9,658	4.2
China	7,745	3.4
Scandinavia	5,206	2.3

### Tourism expenditure (Table 1)

8. Foreign exchange earnings from the tourism sector were R4260 million in 2012, compared to R4138 million in 2013. This represents a decrease of 3%.

### Migration 2013 (Tables 12-17)

9. There has been a net migration of (+177) persons in 2013, representing a decrease of (-5) persons compared to 2012. This net migration of (177) persons is accounted for by a net loss of (-3,772) in long-term migrants, a net gain of (1,972) in short-term migrants and a net gain of (1,977) residents who were absent for short periods. Details on the age and sex distribution of migrants in 2013 are shown in Table 15.

10. An analysis of departing residents is presented in Tables 12 to 17. Table 14 shows that 18% of all departing residents went to Europe, 33% to Africa, 46% to Asia, out of which 20% travelled to the Middle East. Fifteen percent (15%) of these departures were persons leaving for more than one year. Table 16 shows the actual number of departing residents by country of destination. Of the total, 3% went to France, 7% to UK & Eire, 15% to Mauritius, 2% to Kenya, 10% to South Africa, 18% to Dubai, 1% to Singapore and 14% to India.
11. Sixty percent (60%) of all departing residents were going on holiday whilst 16% were going on business or for employment. Of the long-term departures, 28% were emigrating and 61% were leaving after completing their contract. Of the short-term departures, 70% were going on holiday while 18% were leaving for business or employment (Tables 13 and 17).
14. The highest bed occupancy were for hotels on Other islands which recorded an average of 76% occupancy followed by hotels on La Digue with 70%, Mahe 69% and Praslin with 67% occupancy. Guest Houses and Self Catering on Mahe both recorded the lowest occupancy (50%).
15. An analysis of the average distribution of bed occupancy shows that out of the total number of beds sold in 2013, 73% were in hotels, 16% were in guest houses and 10% were in self catering establishments. (Table 19d). The room occupancy had an almost similar distribution at both the type of accommodation and location / (island) level. (Table 20d).
16. The distribution of beds available by location is as follows: Mahe (56%), Praslin (24%), La Digue (9%) and other islands (11%).
17. A breakdown by type of accommodation shows that hotels account for 67% of the beds available, guest houses (20%) and self catering establishments (13%).

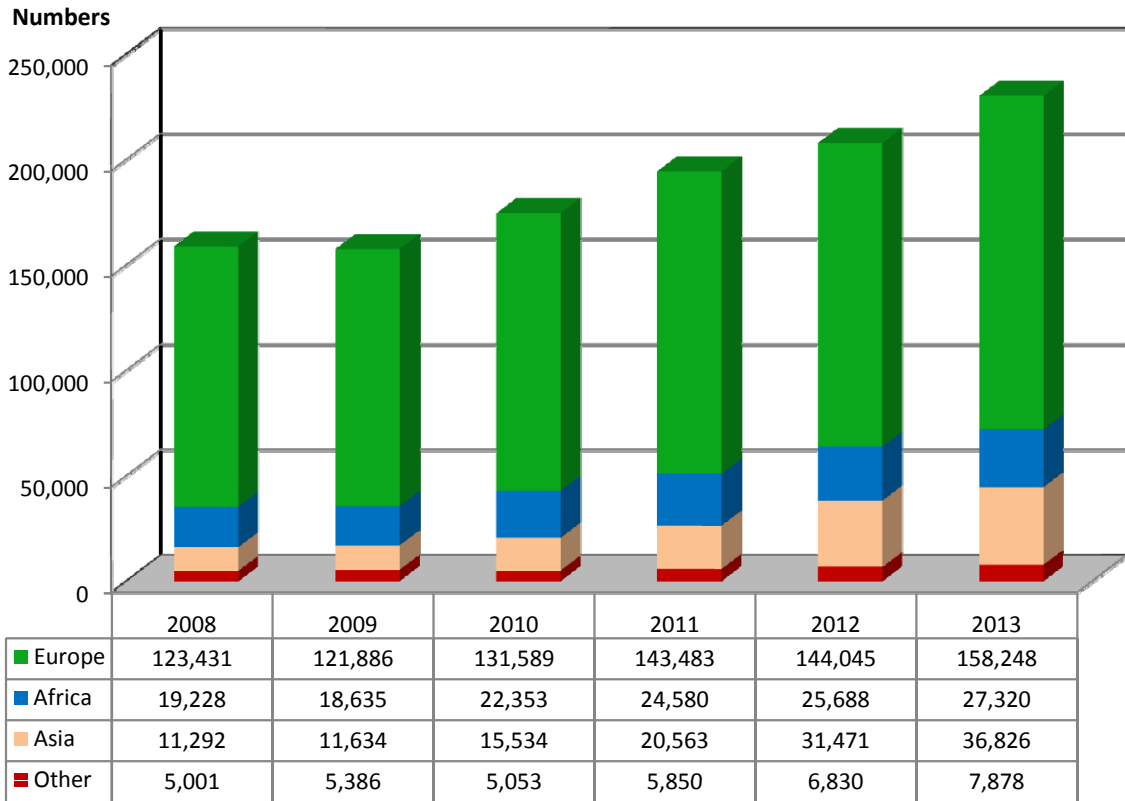
#### **Hotel Statistics 2013 (Tables 18 - 20)**

12. In 2013, there was an average of 6,490<sup>1</sup> beds available representing a decrease of 1% compared to 2012. Licensed accommodation establishments sold 1,512,120 bed nights and 746,960 room nights in 2013. This is an increase of 10% in bed nights and 9% in room nights sold compared to 2012.
13. The average occupancy rates in 2013 were 64% for beds and 65% for rooms compared to 57% and 60% respectively in 2012.

---

<sup>1</sup> Caution should be exercised when making this comparison due to under coverage and non-reporting by some accommodation establishments in the previous year.

**Chart 1 (a): Visitor Arrivals by Region of Residence (2008 - 2013)**



**Chart 1 (b): Visitor Arrivals by Region of Residence (2008 - 2013)**



**VISITORS AND CRUISE SHIP PASSENGERS, 2003-2013**

**Table 1**

<b>YEAR</b>	<b>NUMBER OF VISITOR ARRIVALS</b>	<b>AVERAGE LENGTH OF STAY (NIGHTS)</b>	<b>VISITOR NIGHTS (000) (1)</b>	<b>NUMBER OF CRUISE SHIP PASSENGERS (2)</b>	<b>TOURISM EXPENDITURE (Rm) (3)</b>
<b>2003</b>	122,038	10.1	1,233	4,698	729
<b>2004</b>	120,765	10.0	1,208	5,024	818
<b>2005</b>	128,654	9.7	1,248	6,389	824
<b>2006</b>	140,627	9.8	1,378	9,527	885
<b>2007</b>	161,273	9.9	1,597	9,906	1,194
<b>2008</b>	158,952	10.1	1,605	14,466	1,236
<b>2009</b>	157,541	10.2	1,607	19,798	2,007
<b>2010</b>	174,529	10.4	1,815	15,634	2,451
<b>2011</b>	194,476	10.0	1,945	15,710	2,571
<b>2012</b>	208,034	9.9	2,060	7,643	4,260
<b>2013</b>	230,272	10.2	2,349	6,662	4,138
<b>2010</b>					
<b>Q1</b>	45,107	10.5	474	9,980	584
<b>Q2</b>	39,759	10.3	410	1,483	494
<b>Q3</b>	41,416	11.0	456	-	707
<b>Q4</b>	48,247	9.7	468	4,171	666
<b>2011</b>					
<b>Q1</b>	45,574	10.3	469	10,060	556
<b>Q2</b>	46,386	9.6	445	3,609	588
<b>Q3</b>	49,094	10.5	515	-	682
<b>Q4</b>	53,422	9.5	508	2,041	745
<b>2012</b>					
<b>Q1</b>	49,577	9.9	491	4,932	1,039
<b>Q2</b>	48,836	9.7	474	-	1,266
<b>Q3</b>	51,744	10.1	523	-	970
<b>Q4</b>	57,877	10.1	561	2,711	985
<b>2013</b>					
<b>Q1</b>	59,080	10.2	603	5,466	1,000
<b>Q2</b>	53,429	10.2	545	-	1,166
<b>Q3</b>	56,486	10.8	610	-	954
<b>Q4</b>	61,277	9.7	594	1,196	1,018

**Source: National Bureau of Statistics & Central Bank of Seychelles**

**Notes:**

(1) Visitor arrivals times average length of stay

(2) Not included as visitors

(3) Tourism earnings reported by banks cover only foreign exchange converted into domestic currency by tourism establishments. As such, they exclude foreign exchange earned but retained by authorised establishments to cover their various external commitments.

**INTERNATIONAL MIGRATION AND TOURISM, 1997 - 2013**

**Table 2**

**Numbers**

	Migrants		Residents (Short Absences)	Total Non- Visitors	Total Visitors	Total Visitors + Non-Visitors
	Long Term	Short Term				
<b><u>ARRIVALS</u></b>						
1997	2,370	83	27,935	30,388	130,070	160,458
1998	2,966	265	28,738	31,969	128,258	160,227
1999	2,917	615	29,345	32,877	124,865	157,742
2000	2,425	381	31,997	34,803	130,046	164,849
2001	2,768	479	36,252	39,499	129,762	169,261
2002	2,517	670	47,075	50,262	132,246	182,508
2003	2,476	1,968	44,234	48,678	122,038	170,716
2004	2,324	3,141	42,436	47,901	120,765	168,666
2005	2,671	4,270	44,904	51,845	128,654	180,499
2006	2,941	5,792	46,742	55,475	140,627	196,102
2007	4,673	4,724	49,279	58,676	161,273	219,949
2008	7,280	3,214	44,507	55,001	158,952	213,953
2009	6,333	2,646	38,960	47,939	157,541	205,480
2010	5,816	3,747	46,089	55,652	174,529	230,181
2011	4,543	5,320	46,487	56,350	194,476	250,826
2012	3,728	5,640	44,666	54,034	208,034	262,068
2013	1,654	4,699	48,687	55,040	230,272	285,312
<b><u>DEPARTURES</u></b>						
1997	2,430	774	26,775	29,979	128,277	158,256
1998	2,533	995	27,581	31,109	127,055	158,164
1999	2,736	1,120	27,953	31,809	123,563	155,372
2000	3,465	952	31,464	35,881	126,990	162,871
2001	2,925	942	36,973	40,840	127,411	168,251
2002	2,922	1,661	47,978	52,561	127,992	180,553
2003	2,702	1,485	45,520	49,707	121,060	170,767
2004	2,671	1,483	44,131	48,285	119,769	168,054
2005	3,016	1,630	47,810	52,456	127,891	180,347
2006	3,214	2,143	49,708	55,065	137,841	192,906
2007	3,623	2,027	52,555	58,205	159,761	217,966
2008	5,872	2,087	46,120	54,079	157,521	211,600
2009	6,146	1,872	40,862	48,880	154,907	203,787
2010	5,177	5,142	48,467	58,786	171,113	229,899
2011	6,364	2,896	47,880	57,140	191,687	248,827
2012	6,175	2,338	45,339	53,852	203,145	256,997
2013	2,727	5,426	46,710	54,863	225,842	280,705

Source: National Bureau of Statistics from disembarkation cards



**VISITOR ARRIVALS BY MONTH 2007-2013**

**Table 3**

	Jan	Feb	Mar	Apr	May	Jun	Jul	Aug	Sep	Oct	Nov	Dec	Year
	<b>(Numbers)</b>												
2007	11,170	14,543	15,557	14,709	9,967	10,332	13,704	14,149	12,491	16,729	13,290	14,632	161,273
2008	12,799	14,863	16,481	15,063	11,200	9,546	13,128	14,139	11,410	14,189	12,815	13,319	158,952
2009	11,256	12,552	14,056	14,444	11,746	10,725	12,689	14,192	12,236	15,115	14,279	14,251	157,541
2010	12,771	14,894	17,442	13,830	14,176	11,753	14,373	14,529	12,514	17,536	15,323	15,388	174,529
2011	13,800	14,868	16,906	19,182	14,059	13,145	16,588	19,262	13,244	19,065	16,359	17,998	194,476
2012	13,673	16,117	19,787	20,049	14,869	13,918	17,395	18,887	15,462	21,023	16,245	20,609	208,034
2013	15,774	19,570	23,736	21,039	16,815	15,575	17,887	21,677	16,922	22,460	18,240	20,577	230,272
	<b>(Percentage change)</b>												
08/07	15	2	6	2	12	-8	-4	0	-9	-15	-4	-9	-1
09/08	-12	-16	-15	-4	5	12	-3	0	7	7	11	7	-1
10/09	13	19	24	-4	21	10	13	2	2	16	7	8	11
11/10	8	0	-3	39	-1	12	15	33	6	9	7	17	11
12/11	-1	8	17	5	6	6	5	-2	17	10	-1	15	7
13/12	15	21	20	5	13	12	3	15	9	7	12	0	11
<b>Average length of stay</b>	<b>(Nights)</b>												
2007	10.2	8.9	9.7	9.9	10.0	10.1	10.4	11.1	10.5	9.0	9.7	9.6	9.9
2008	9.5	9.2	10.3	10.0	10.2	10.3	10.6	11.3	10.7	9.9	10.0	9.8	10.1
2009	10.5	9.5	10.1	10.0	9.9	9.8	10.5	11.6	10.4	9.8	10.0	9.9	10.2
2010	11.4	10.0	9.9	10.5	10.2	10.1	10.6	11.8	10.3	9.8	9.7	9.8	10.4
2011	10.9	10.0	10.0	9.6	9.6	9.8	9.9	11.6	9.8	9.6	9.4	9.6	10.0
2012	10.3	9.9	9.5	9.6	9.3	9.4	9.9	10.5	9.9	9.7	11.1	9.6	9.9
2013	10.0	11.0	9.4	10.8	9.9	9.6	10.1	11.2	10.9	9.3	10.0	9.9	10.2

Source: National Bureau of Statistics from disembarkation cards

**VISITOR ARRIVALS BY PURPOSE OF VISIT, 2010 - 2013**

**Table 4**

**Number of visitors**

	Jan	Feb	Mar	Apr	May	Jun	Jul	Aug	Sep	Oct	Nov	Dec	Year
<b>2010 - Total</b>	<b>12,771</b>	<b>14,894</b>	<b>17,442</b>	<b>13,830</b>	<b>14,176</b>	<b>11,753</b>	<b>14,373</b>	<b>14,529</b>	<b>12,514</b>	<b>17,536</b>	<b>15,323</b>	<b>15,388</b>	<b>174,529</b>
Holiday	10,604	12,774	16,057	12,606	12,765	10,549	12,996	13,436	11,492	15,858	13,508	14,017	156,662
Business	845	955	967	820	802	532	810	593	743	1,102	1,122	563	9,854
Holiday/Business	36	35	51	43	29	29	30	33	38	54	66	36	480
Transit	67	78	65	22	84	101	52	130	34	101	225	207	1,166
Other/not stated	1,219	1,052	302	339	496	542	485	337	207	421	402	565	6,367
<b>2011 - Total</b>	<b>13,800</b>	<b>14,868</b>	<b>16,906</b>	<b>19,182</b>	<b>14,059</b>	<b>13,145</b>	<b>16,588</b>	<b>19,262</b>	<b>13,244</b>	<b>19,065</b>	<b>16,359</b>	<b>17,998</b>	<b>194,476</b>
Holiday	12,400	13,549	15,199	17,702	12,785	11,422	15,418	16,714	11,998	17,552	14,618	16,576	175,933
Business	538	660	744	494	531	472	477	306	540	672	633	387	6,454
Holiday/Business	51	45	44	30	28	25	30	11	22	43	30	22	381
Transit	124	43	31	35	34	42	57	42	107	212	296	353	1,376
Other/not stated	687	571	888	921	681	1,184	606	2,189	577	586	782	660	10,332
<b>2012 - Total</b>	<b>13,673</b>	<b>16,117</b>	<b>19,787</b>	<b>20,049</b>	<b>14,869</b>	<b>13,918</b>	<b>17,395</b>	<b>18,887</b>	<b>15,462</b>	<b>21,023</b>	<b>16,245</b>	<b>20,609</b>	<b>208,034</b>
Holiday	12,160	14,595	17,866	18,809	13,639	12,734	16,122	17,458	14,306	19,492	15,010	19,443	191,634
Business	371	526	413	443	784	448	588	479	355	637	540	511	6,095
Holiday/Business	21	17	20	12	30	13	18	11	11	10	19	13	195
Transit	362	22	460	82	29	44	22	38	53	92	42	73	1,319
Other/not stated*	759	957	1,028	703	387	679	645	901	737	792	634	569	8,791
<b>2013 - Total</b>	<b>15,774</b>	<b>19,570</b>	<b>23,736</b>	<b>21,039</b>	<b>16,815</b>	<b>15,575</b>	<b>17,887</b>	<b>21,677</b>	<b>16,922</b>	<b>22,460</b>	<b>18,240</b>	<b>20,577</b>	<b>230,272</b>
Holiday	13,630	17,951	22,234	19,522	15,539	14,419	16,916	20,387	15,684	20,757	16,654	19,343	213,036
Business	500	721	607	637	572	736	599	519	799	926	924	487	8,027
Holiday/Business	11	15	19	10	12	16	18	30	18	39	26	8	222
Transit	605	54	96	38	31	28	68	75	21	50	35	76	1,177
Other/not stated*	1,028	829	780	832	661	376	286	666	400	688	601	663	7,810

Source: National Bureau of Statistics from disembarkation cards

Note: \* Including crew

VISITOR STATISTICS: QUARTERLY SUMMARY, 2004 - 2013

Table 5

Year Quarter	Visitor arrivals (No.)	Purpose of visit (%)			Country of present residence (%)							
		Holiday	Business/ holiday	Transit/ Other	France	UK/Eire	Italy	Germany	Switzerland	Total Europe	Africa	Other
<b>2004</b>	120,765	89.6	5.6	4.9	21.6	14.9	14.2	12.8	3.7	81.5	10.5	8.1
<b>2005</b>	128,654	90.2	5.2	4.6	21.4	13.1	14.3	13.2	3.5	80.4	9.8	9.9
<b>2006</b>	140,627	91.0	5.1	4.0	19.4	11.4	16.5	13.7	3.5	81.1	9.6	9.3
<b>2007</b>	161,273	91.1	4.8	4.1	19.8	10.5	15.8	12.0	3.4	79.2	10.5	10.3
<b>2008</b>	158,952	89.3	6.2	4.5	19.7	8.7	15.0	13.4	3.3	77.7	12.1	10.3
<b>2009</b>	157,541	90.1	6.5	3.4	19.9	7.2	16.6	12.5	3.6	77.4	11.8	10.8
<b>2010</b>	174,529	89.8	5.9	4.3	20.1	7.1	14.7	12.2	3.7	75.4	12.8	11.8
<b>2011</b>	194,476	90.5	3.5	6.0	20.2	6.9	13.2	12.2	3.9	73.8	12.6	13.6
<b>2012</b>	208,034	92.1	3.0	4.9	15.5	5.4	11.2	13.5	4.1	69.2	12.3	18.4
<b>2013</b>	230,272	92.5	3.6	3.9	15.5	5.5	9.5	14.5	4.2	68.7	11.9	19.4
<b><u>2011</u></b>												
<b>Q1</b>	45,574	90.3	4.6	5.1	26.5	5.3	12.0	10.0	3.2	76.8	11.4	11.9
<b>Q2</b>	46,386	90.3	3.4	6.2	19.4	8.4	14.0	12.3	3.6	74.1	11.8	14.1
<b>Q3</b>	49,094	89.9	2.8	7.3	15.0	7.6	19.1	12.5	3.8	73.3	13.3	13.4
<b>Q4</b>	53,422	91.2	3.3	5.4	20.5	6.1	8.1	13.7	4.9	71.4	13.9	14.7
<b><u>2012</u></b>												
<b>Q1</b>	49,577	90.0	2.8	7.2	19.2	4.4	9.4	12.5	3.5	73.6	10.8	15.7
<b>Q2</b>	48,836	92.5	3.5	3.9	15.0	5.8	11.6	13.2	4.3	68.5	12.0	19.5
<b>Q3</b>	51,744	92.5	2.8	4.6	11.7	6.2	16.5	15.1	3.9	68.6	11.6	19.7
<b>Q4</b>	57,877	93.2	3.0	3.8	16.2	5.2	7.8	13.3	4.7	66.7	14.7	18.7
<b><u>2013</u></b>												
<b>Q1</b>	59,080	91.1	3.2	5.7	17.8	4.6	7.8	14.5	3.5	71.2	10.9	17.9
<b>Q2</b>	53,429	92.6	3.7	3.7	16.9	5.7	9.7	14.4	3.8	69.0	11.5	19.5
<b>Q3</b>	56,486	93.8	3.5	2.7	12.2	6.6	13.8	15.4	4.5	68.2	10.9	20.9
<b>Q4</b>	61,277	92.6	3.9	3.4	15.3	5.1	6.8	13.9	4.9	66.6	14.0	19.4

Source : National Bureau of Statistics from disembarkation cards

**VISITOR ARRIVALS BY COUNTRY OF PRESENT RESIDENCE  
2009 - 2013**

**Table 6**

<b>Country of residence</b>	<b>2009</b>	<b>2010</b>	<b>2011</b>	<b>2012</b>	<b>2013</b>
<b>TOTAL</b>	<b><u>157,541</u></b>	<b><u>174,529</u></b>	<b><u>194,476</u></b>	<b><u>208,034</u></b>	<b><u>230,272</u></b>
<b>EUROPE</b>	<b><u>121,886</u></b>	<b><u>131,589</u></b>	<b><u>143,483</u></b>	<b><u>144,060</u></b>	<b><u>158,248</u></b>
France	31,341	35,026	39,370	32,248	35,765
UK & Eire	11,350	12,390	13,335	11,253	12,617
Germany	19,736	21,314	23,706	28,163	33,489
Italy	26,114	25,602	25,674	23,401	21,767
Switzerland	5,597	6,523	7,644	8,582	9,658
Austria	2,852	3,446	3,745	4,771	4,667
Belgium & Luxembourg	2,486	2,678	2,958	2,796	2,786
Netherlands	1,297	1,435	1,747	1,850	1,854
Scandinavia	2,493	3,159	3,373	3,979	5,206
Spain & Portugal	3,002	3,179	3,356	2,913	2,944
Russia	8,098	8,942	8,840	13,494	14,367
Other CIS	1,488	1,636	2,202	2,598	2,870
Other Europe	6,032	6,259	7,533	8,012	10,258
<b>AFRICA</b>	<b><u>18,635</u></b>	<b><u>22,353</u></b>	<b><u>24,580</u></b>	<b><u>25,688</u></b>	<b><u>27,320</u></b>
Reunion	3,389	4,483	4,789	4,115	2,869
Mauritius	3,476	3,631	3,867	2,868	3,341
East Africa <sup>(1)</sup>	1,160	1,383	1,622	2,133	2,728
South Africa	8,208	10,425	10,559	12,351	13,294
Other Southern Africa <sup>(2)</sup>	491	646	834	816	2,569
Other Africa	1,911	1,785	2,909	3,405	2,519
<b>ASIA</b>	<b><u>11,634</u></b>	<b><u>15,534</u></b>	<b><u>20,563</u></b>	<b><u>31,456</u></b>	<b><u>36,826</u></b>
United Arab Emirates	3,842	5,387	8,488	12,880	13,895
Other Middle East	2,964	3,542	4,379	7,644	6,501
Indian Sub-continent	2,150	3,519	3,152	3,203	3,511
China	919	1,078	2,124	4,484	7,745
Other Far East	1,759	2,008	2,420	3,245	5,174
<b>OCEANIA</b>	<b><u>845</u></b>	<b><u>1,093</u></b>	<b><u>1,120</u></b>	<b><u>1,240</u></b>	<b><u>1,733</u></b>
<b>AMERICA</b>	<b><u>4,541</u></b>	<b><u>3,960</u></b>	<b><u>4,730</u></b>	<b><u>5,590</u></b>	<b><u>6,145</u></b>
USA	3,573	2,789	3,211	3,923	4,084
Other America	968	1,171	1,519	1,667	2,061

**Source: National Bureau of Statistics from disembarkation cards**

Notes:

(1) East Africa includes: Kenya, Tanzania and Uganda only

(2) Botswana, Lesotho, Swaziland, Namibia, Zambia, Malawi and Zimbabwe

## VISITOR ARRIVALS BY COUNTRY OF RESIDENCE AND REGION - 2013

(List as per the United Nations Country Grouping)

Table 7

Country of Residence	Jan-13	Feb-13	Mar-13	Apr-13	May-13	Jun-13	Jul-13	Aug-13	Sep-13	Oct-13	Nov-13	Dec-13
<b>GRAND TOTAL</b>	<b>15,774</b>	<b>19,570</b>	<b>23,736</b>	<b>21,039</b>	<b>16,815</b>	<b>15,575</b>	<b>17,887</b>	<b>21,677</b>	<b>16,922</b>	<b>22,460</b>	<b>18,240</b>	<b>20,577</b>
<b>EUROPE TOTAL</b>	<b>10,786</b>	<b>13,906</b>	<b>17,364</b>	<b>15,232</b>	<b>12,147</b>	<b>9,466</b>	<b>12,538</b>	<b>14,433</b>	<b>11,550</b>	<b>15,441</b>	<b>13,246</b>	<b>12,139</b>
<b>Eastern Europe</b>	<b>2,863</b>	<b>2,391</b>	<b>2,858</b>	<b>2,642</b>	<b>2,181</b>	<b>1,288</b>	<b>1,319</b>	<b>1,221</b>	<b>1,012</b>	<b>1,788</b>	<b>2,166</b>	<b>2,851</b>
Belarus	23	18	26	-	11	14	29	10	9	42	31	30
Bulgaria	33	55	69	48	19	16	10	27	16	11	31	65
Czech Republic	200	308	302	159	162	107	141	87	90	175	341	270
Hungary	138	158	110	53	36	40	50	45	38	91	51	100
Poland	287	261	366	441	414	244	124	93	119	232	301	113
Republic of Moldova	2	5	1	6	5	5	-	2	5	2	1	6
Romania	47	40	41	99	32	61	72	105	44	38	31	64
Russia	1,752	1,287	1,609	1,628	1,323	664	764	693	598	1,025	1,156	1,868
Slovakia	44	89	151	59	60	36	43	32	37	43	60	71
Ukraine	337	170	183	149	119	101	86	127	56	129	163	264
<b>Northern Europe</b>	<b>1,007</b>	<b>1,734</b>	<b>1,975</b>	<b>1,327</b>	<b>1,250</b>	<b>1,361</b>	<b>1,960</b>	<b>1,480</b>	<b>1,520</b>	<b>2,070</b>	<b>1,645</b>	<b>1,788</b>
Aland Islands	-	-	-	-	-	-	-	-	-	-	-	-
Channel Islands	-	-	-	2	-	1	2	-	-	2	4	-
Denmark	77	183	135	67	55	38	156	36	91	123	66	44
Estonia	37	15	29	14	5	10	-	6	11	53	27	48
Faeroe Islands	-	-	-	-	-	-	-	-	-	-	-	-
Finland	68	116	80	35	12	37	48	28	53	80	61	83
Guernsey	-	8	10	3	4	3	-	3	-	1	-	1
Iceland	1	1	-	1	1	2	2	-	-	9	2	-
Ireland	33	27	33	31	54	53	80	52	59	43	55	42
Isle of Man	-	-	2	-	-	-	2	3	-	1	1	-
Jersey	-	6	1	5	-	-	2	8	3	2	-	-
Latvia	18	8	28	14	16	5	3	4	10	17	9	32
Lithuania	14	24	38	32	48	23	5	7	48	9	23	23
Northern Ireland (1)	-	-	6	5	4	2	5	7	3	6	5	1
Norway	56	142	118	27	18	87	141	52	54	77	55	102
Sark	-	-	-	-	-	-	-	-	-	-	-	-
Svalbard and Jan Mayen Islands	-	-	-	-	-	-	-	-	-	-	-	-
Sweden	167	282	263	57	57	90	181	59	94	418	318	519
United Kingdom of Great Britain	536	922	1,232	1,034	976	1,010	1,333	1,215	1,094	1,229	1,019	893
<b>Southern Europe</b>	<b>1,300</b>	<b>1,790</b>	<b>2,559</b>	<b>2,616</b>	<b>1,531</b>	<b>1,902</b>	<b>2,218</b>	<b>4,455</b>	<b>2,590</b>	<b>1,987</b>	<b>1,480</b>	<b>1,728</b>
Albania	-	6	1	-	-	-	1	-	1	-	-	-
Andorra	-	-	9	1	-	-	2	3	-	-	1	-
Bosnia & Herzegovina	1	-	4	2	8	4	-	1	2	2	-	5
Croatia	22	13	22	8	38	16	12	4	2	6	5	22
Gibraltar	-	-	3	1	-	-	-	-	-	-	-	1
Greece	72	18	28	30	26	19	52	33	28	46	17	48
Holy See (Vatican City)	-	-	-	-	-	-	-	-	-	-	-	-
Italy	1,001	1,528	2,083	2,310	1,264	1,610	1,782	3,786	2,221	1,642	1,242	1,298
Kosovo	-	-	-	-	-	-	-	-	-	-	-	-
Malta	15	4	6	5	5	7	5	4	13	1	5	11
Macedonia	2	7	-	1	4	-	2	8	-	2	-	-
Montenegro	4	-	1	-	-	1	-	20	-	1	-	-
Portugal	23	28	65	38	29	22	28	53	37	37	27	54
San Marino	4	3	2	11	2	-	5	-	1	3	-	9
Serbia	21	17	28	20	13	16	36	38	13	10	8	26
Slovenia	46	67	32	55	20	24	37	30	3	18	12	35
Spain	89	99	275	134	122	183	256	475	269	219	163	219
<b>Western Europe</b>	<b>5,616</b>	<b>7,991</b>	<b>9,972</b>	<b>8,647</b>	<b>7,185</b>	<b>4,915</b>	<b>7,041</b>	<b>7,277</b>	<b>6,428</b>	<b>9,596</b>	<b>7,955</b>	<b>5,772</b>
Austria	342	635	442	306	265	299	426	384	355	442	352	419
Belgium	111	145	274	211	202	148	316	177	160	280	184	161
France	2,283	3,923	4,310	4,694	2,810	1,523	2,261	2,854	1,752	3,858	3,223	2,274
Germany	2,288	2,471	3,783	2,350	3,081	2,258	2,601	3,081	3,031	3,503	3,129	1,913
Liechtenstein	3	2	1	1	3	-	1	1	2	10	2	2
Luxembourg	23	26	61	20	27	24	39	86	27	29	29	26
Monaco	10	21	13	26	5	8	9	6	6	9	13	22
Netherlands	104	119	105	174	135	141	277	158	220	145	114	162
Switzerland	452	649	983	865	657	514	1,111	530	875	1,320	909	793

## VISITOR ARRIVALS BY COUNTRY OF RESIDENCE AND REGION - 2013

(List as per the United Nations Country Grouping)

Table 7

Country of Residence	Jan-13	Feb-13	Mar-13	Apr-13	May-13	Jun-13	Jul-13	Aug-13	Sep-13	Oct-13	Nov-13	Dec-13
<b>AFRICA TOTAL</b>	<b>1,927</b>	<b>1,706</b>	<b>2,802</b>	<b>2,312</b>	<b>1,897</b>	<b>1,961</b>	<b>1,997</b>	<b>2,093</b>	<b>2,061</b>	<b>2,305</b>	<b>1,957</b>	<b>4,302</b>
<b>Eastern Africa</b>	<b>884</b>	<b>930</b>	<b>1,226</b>	<b>936</b>	<b>943</b>	<b>616</b>	<b>1,020</b>	<b>970</b>	<b>711</b>	<b>958</b>	<b>871</b>	<b>1,215</b>
Agalega (2)	-	-	-	-	-	-	3	2	-	-	-	1
Burundi	2	5	3	4	-	1	3	9	5	6	2	12
Comoros	4	10	1	7	-	-	6	6	6	4	8	2
Djibouti	8	14	13	4	5	2	10	7	6	3	3	8
Eritrea	-	-	1	1	-	-	-	4	-	-	-	-
Ethiopia	55	59	85	45	41	47	141	170	118	70	60	45
Kenya	58	179	194	227	137	115	122	194	135	133	105	356
Madagascar	18	17	31	24	43	20	32	48	23	23	21	21
Malawi	3	6	12	2	2	2	4	4	5	7	10	23
Mauritius	181	282	245	304	232	215	375	267	275	262	375	309
Mayotte	-	6	23	9	8	2	9	9	-	2	3	9
Mozambique	4	14	8	14	7	6	10	14	10	14	12	30
Reunion	497	210	527	199	391	122	219	98	50	261	189	106
Rodrigue (2)	2	7	-	-	-	3	15	3	2	14	1	5
Rwanda	5	5	6	23	3	4	14	10	9	13	-	29
Somalia	-	5	2	3	-	5	-	-	2	3	1	1
Uganda	26	24	22	34	30	26	20	35	26	42	26	103
United Republic of Tanzania	10	22	15	18	16	23	29	49	25	51	20	60
Zambia	2	22	21	5	17	20	6	28	9	36	15	57
Zimbabwe	9	43	17	13	11	3	2	13	5	14	20	38
<b>Middle Africa</b>	<b>10</b>	<b>31</b>	<b>42</b>	<b>49</b>	<b>20</b>	<b>3</b>	<b>45</b>	<b>36</b>	<b>22</b>	<b>27</b>	<b>22</b>	<b>130</b>
Angola	6	4	26	20	6	-	6	8	2	17	9	95
Cameroon	1	12	1	5	5	1	6	8	9	2	6	9
Central African Republic	1	-	-	-	-	-	-	1	-	2	-	-
Chad	-	1	2	-	-	2	1	-	-	-	1	1
Congo (Brazzaville)	1	10	2	10	8	-	1	7	5	2	4	3
Democratic Republic of the Congo	1	4	6	14	1	-	28	5	5	2	2	21
Equatorial Guinea	-	-	-	-	-	-	2	7	1	-	-	1
Gabon	-	-	5	-	-	-	1	-	-	1	-	-
Sao Tome and Principe	-	-	-	-	-	-	-	-	-	1	-	-
<b>Northern Africa</b>	<b>60</b>	<b>47</b>	<b>77</b>	<b>85</b>	<b>63</b>	<b>64</b>	<b>40</b>	<b>160</b>	<b>59</b>	<b>120</b>	<b>54</b>	<b>74</b>
Algeria	3	1	2	1	6	-	2	2	7	5	3	16
Egypt	16	9	18	29	10	9	8	37	11	26	16	18
Libya	5	5	1	3	9	1	1	6	5	6	5	6
Morocco	8	7	12	16	18	17	4	45	8	33	11	17
South Sudan	2	-	9	6	1	4	2	21	5	4	2	3
Sudan	15	7	20	2	4	4	5	12	8	31	9	13
Tunisia	11	18	15	28	15	29	18	37	15	15	8	1
Western Sahara	-	-	-	-	-	-	-	-	-	-	-	-
<b>Southern Africa</b>	<b>837</b>	<b>666</b>	<b>1,388</b>	<b>1,130</b>	<b>778</b>	<b>1,240</b>	<b>825</b>	<b>774</b>	<b>1,206</b>	<b>1,137</b>	<b>953</b>	<b>2,743</b>
Botswana	8	10	11	22	9	6	10	6	24	14	7	45
Lesotho	-	4	-	-	-	1	-	6	4	2	2	3
Namibia	5	7	26	7	7	13	5	12	15	5	20	42
South Africa	824	641	1,351	1,101	759	1,219	802	746	1,163	1,116	924	2,648
Swaziland	-	4	-	-	3	1	8	4	-	-	-	5
<b>Western Africa</b>	<b>136</b>	<b>32</b>	<b>69</b>	<b>112</b>	<b>93</b>	<b>38</b>	<b>67</b>	<b>153</b>	<b>63</b>	<b>63</b>	<b>57</b>	<b>140</b>
Benin	-	-	-	2	-	-	1	-	-	-	-	2
Burkina Faso	-	-	-	-	5	-	-	-	-	-	-	-
Cape Verde	-	-	-	-	-	-	2	-	-	1	-	-
Cote D'ivoire	-	-	3	2	4	3	1	3	-	2	3	3
Gambia	-	-	-	-	-	-	1	1	3	-	-	-
Ghana	6	4	23	33	7	10	10	16	-	4	11	5
Guinea	1	-	-	4	-	-	1	-	3	-	4	-
Guinea-Bissau	-	-	-	-	-	-	1	-	-	-	-	-
Liberia	-	1	2	-	-	-	-	1	-	-	-	3
Mali	-	-	-	2	1	1	-	1	-	3	-	-
Mauritania	-	-	-	-	-	-	2	-	-	-	-	-
Niger	-	1	-	-	-	-	-	-	-	-	-	2
Nigeria	125	21	41	53	76	22	48	130	53	50	34	123
Saint Helena	-	-	-	-	-	-	-	-	-	3	-	-
Senegal	3	3	-	-	-	2	-	1	2	-	5	1
Sierra Leone	1	2	-	-	-	-	-	-	2	-	-	-
Togo	-	-	-	16	-	-	-	-	-	-	-	1

## VISITOR ARRIVALS BY COUNTRY OF RESIDENCE AND REGION - 2013

(List as per the United Nations Country Grouping)

Table 7

Country of Residence	Jan-13	Feb-13	Mar-13	Apr-13	May-13	Jun-13	Jul-13	Aug-13	Sep-13	Oct-13	Nov-13	Dec-13
<b>ASIA TOTAL</b>	<b>2,424</b>	<b>3,448</b>	<b>2,952</b>	<b>2,940</b>	<b>2,344</b>	<b>3,518</b>	<b>2,634</b>	<b>4,512</b>	<b>2,617</b>	<b>3,717</b>	<b>2,415</b>	<b>3,305</b>
<b>Central Asia</b>	<b>113</b>	<b>35</b>	<b>76</b>	<b>29</b>	<b>37</b>	<b>55</b>	<b>23</b>	<b>47</b>	<b>22</b>	<b>32</b>	<b>22</b>	<b>101</b>
Kazakhstan	95	28	67	26	35	47	21	46	19	31	21	85
Kyrgyzstan	8	3	1	-	1	-	-	1	-	1	-	4
Tajikistan	5	2	-	-	-	-	-	-	-	-	-	1
Turkmenistan	-	-	-	-	-	-	1	-	2	-	-	-
Uzbekistan	5	2	8	3	1	8	1	-	1	-	1	11
<b>Eastern Asia</b>	<b>434</b>	<b>1,763</b>	<b>437</b>	<b>492</b>	<b>544</b>	<b>811</b>	<b>911</b>	<b>1,212</b>	<b>1,070</b>	<b>1,245</b>	<b>601</b>	<b>746</b>
China	282	1,619	249	357	359	513	737	904	797	997	431	500
Hong Kong	8	23	49	35	22	62	39	94	50	69	40	67
Macao	-	-	3	-	-	1	-	1	-	-	-	-
Democratic People's Republic of Korea	33	2	3	4	1	-	-	-	4	5	-	2
Japan	36	42	55	43	80	109	72	125	110	46	43	62
Mongolia	25	-	-	-	-	-	-	-	-	-	1	3
Republic of Korea	44	72	74	47	70	120	49	44	103	108	83	102
Taiwan	6	5	4	6	12	6	14	44	6	20	3	10
<b>Southern Asia</b>	<b>273</b>	<b>304</b>	<b>263</b>	<b>289</b>	<b>280</b>	<b>424</b>	<b>197</b>	<b>203</b>	<b>189</b>	<b>273</b>	<b>363</b>	<b>559</b>
Afghanistan	4	5	-	-	1	-	3	2	2	3	2	4
Bangladesh	13	2	34	22	4	5	4	4	2	7	2	11
Bhutan	-	-	-	-	-	-	-	-	-	-	-	-
India	213	228	140	176	226	252	144	120	121	212	210	339
Iran (Islamic Republic of)	2	11	43	23	2	3	3	18	11	6	12	27
Maldives	-	10	6	6	10	2	7	4	-	3	36	15
Nepal	8	2	4	3	2	7	1	1	3	-	3	3
Pakistan	18	31	24	34	20	25	15	23	19	14	18	36
Sri Lanka	15	15	12	25	15	130	20	31	31	28	80	124
<b>South-Eastern Asia</b>	<b>109</b>	<b>90</b>	<b>66</b>	<b>116</b>	<b>79</b>	<b>78</b>	<b>64</b>	<b>75</b>	<b>58</b>	<b>102</b>	<b>88</b>	<b>99</b>
Brunei Darussalam	-	-	-	-	-	-	6	-	1	-	-	5
Cambodia	-	-	-	-	-	-	-	2	-	-	-	-
Indonesia	5	38	11	6	2	2	7	9	-	9	12	18
Lao People's Democratic Republic	-	-	-	-	-	-	-	-	-	-	-	-
Malaysia	4	11	6	12	29	13	7	15	8	16	4	3
Myanmar	-	-	1	-	-	-	1	1	-	-	-	-
Philippines	58	15	8	39	9	9	12	7	20	34	22	33
Singapore	22	18	28	29	27	33	22	28	20	28	39	21
Thailand	16	2	12	27	11	14	5	13	8	14	11	18
Timor-Leste	-	-	-	-	-	-	-	-	-	-	-	-
Viet Nam	4	6	-	3	1	7	4	-	1	1	-	1
<b>Western Asia</b>	<b>1,495</b>	<b>1,256</b>	<b>2,110</b>	<b>2,014</b>	<b>1,404</b>	<b>2,150</b>	<b>1,439</b>	<b>2,975</b>	<b>1,278</b>	<b>2,065</b>	<b>1,341</b>	<b>1,800</b>
Armenia	9	7	-	2	-	2	-	3	2	1	28	16
Azerbaijan	2	3	66	8	9	8	11	15	2	12	-	28
Bahrain	14	28	38	51	17	43	27	42	18	63	33	39
Cyprus	8	11	11	5	7	5	7	18	9	10	6	12
Georgia	12	4	3	-	5	2	2	5	1	2	-	3
Iraq	-	3	7	2	1	1	6	11	-	1	1	3
Israel	42	35	391	24	132	29	39	36	302	31	66	35
Jordan	5	7	5	4	6	8	2	9	8	9	5	5
Kuwait	7	56	19	38	14	51	9	54	13	65	18	56
Lebanon	30	20	53	32	22	19	32	30	28	23	26	24
Occupied Palestinian Territory	-	1	-	-	-	5	-	1	-	-	1	2
Oman	12	9	9	10	17	34	7	28	4	21	6	7
Qatar	126	167	283	221	149	250	179	359	38	152	62	68
Saudi Arabia	176	78	240	83	167	157	55	277	105	256	80	122
Syrian Arab Republic	2	2	3	5	4	8	6	2	4	4	1	2
Turkey	39	42	24	18	27	64	46	40	29	106	64	43
United Arab Emirates	1,011	783	956	1,508	826	1,462	1,011	2,045	714	1,303	943	1,333
Yemen	-	-	2	3	1	2	-	-	1	6	1	2

## VISITOR ARRIVALS BY COUNTRY OF RESIDENCE AND REGION - 2013

(List as per the United Nations Country Grouping)

Table 7

Country of Residence	Jan-13	Feb-13	Mar-13	Apr-13	May-13	Jun-13	Jul-13	Aug-13	Sep-13	Oct-13	Nov-13	Dec-13
<b>OCEANIA TOTAL</b>	<b>118</b>	<b>81</b>	<b>102</b>	<b>163</b>	<b>68</b>	<b>106</b>	<b>134</b>	<b>120</b>	<b>162</b>	<b>354</b>	<b>92</b>	<b>233</b>
<b>Australia and New Zealand</b>	<b>118</b>	<b>80</b>	<b>102</b>	<b>162</b>	<b>63</b>	<b>103</b>	<b>132</b>	<b>116</b>	<b>141</b>	<b>351</b>	<b>90</b>	<b>230</b>
Australia	101	67	96	145	50	87	118	97	124	327	69	213
New Zealand	17	13	6	17	13	16	14	19	17	24	21	17
Norfolk Island	-	-	-	-	-	-	-	-	-	-	-	-
<b>Melanesia</b>	-	<b>1</b>	-	-	<b>2</b>	<b>2</b>	<b>1</b>	<b>3</b>	<b>2</b>	<b>1</b>	<b>1</b>	-
Fiji	-	-	-	-	1	-	-	-	2	1	1	-
New Caledonia	-	-	-	-	1	2	1	2	-	-	-	-
Papua New Guinea	-	1	-	-	-	-	-	1	-	-	-	-
Solomon Islands	-	-	-	-	-	-	-	-	-	-	-	-
Vanuatu	-	-	-	-	-	-	-	-	-	-	-	-
<b>Micronesia</b>	-	-	-	-	-	-	<b>1</b>	-	<b>1</b>	<b>2</b>	-	-
Guam	-	-	-	-	-	-	-	-	-	2	-	-
Kiribati	-	-	-	-	-	-	-	-	1	-	-	-
Marshall Islands	-	-	-	-	-	-	-	-	-	-	-	-
Micronesia (Federated States of)	-	-	-	-	-	-	1	-	-	-	-	-
Nauru	-	-	-	-	-	-	-	-	-	-	-	-
Northern Mariana Islands	-	-	-	-	-	-	-	-	-	-	-	-
Palau	-	-	-	-	-	-	-	-	-	-	-	-
<b>Polynesia</b>	-	-	-	<b>1</b>	<b>3</b>	<b>1</b>	-	<b>1</b>	<b>18</b>	-	<b>1</b>	<b>3</b>
American Samoa	-	-	-	-	-	-	-	-	-	-	-	-
Cook Islands	-	-	-	-	-	-	-	-	-	-	-	-
French Polynesia (Tahiti)	-	-	-	1	3	1	-	1	-	-	-	3
Niue	-	-	-	-	-	-	-	-	-	-	-	-
Pitcairn	-	-	-	-	-	-	-	-	-	-	-	-
Samoa	-	-	-	-	-	-	-	-	18	-	1	-
Tokelau	-	-	-	-	-	-	-	-	-	-	-	-
Tonga	-	-	-	-	-	-	-	-	-	-	-	-
Tuvalu	-	-	-	-	-	-	-	-	-	-	-	-
Wallis and Futuna Islands	-	-	-	-	-	-	-	-	-	-	-	-



**VISITOR ARRIVALS BY COUNTRY OF RESIDENCE AND REGION - 2013**

(List as per the United Nations Country Grouping)

**Table 7**

<b>Country of Residence</b>	<b>Jan-13</b>	<b>Feb-13</b>	<b>Mar-13</b>	<b>Apr-13</b>	<b>May-13</b>	<b>Jun-13</b>	<b>Jul-13</b>	<b>Aug-13</b>	<b>Sep-13</b>	<b>Oct-13</b>	<b>Nov-13</b>	<b>Dec-13</b>
<b>AMERICA TOTAL</b>	<b>519</b>	<b>429</b>	<b>516</b>	<b>392</b>	<b>359</b>	<b>524</b>	<b>584</b>	<b>519</b>	<b>532</b>	<b>643</b>	<b>530</b>	<b>598</b>
<b>Caribbean</b>	<b>5</b>	<b>5</b>	<b>12</b>	<b>3</b>	<b>6</b>	<b>6</b>	<b>4</b>	<b>4</b>	<b>8</b>	<b>4</b>	<b>23</b>	<b>4</b>
Anguilla	-	-	-	-	-	-	-	-	-	-	-	-
Antigua and Barbuda	-	-	-	-	-	-	-	-	-	-	-	-
Aruba	-	-	-	-	-	-	-	-	-	-	-	-
Bahamas	-	-	-	-	-	-	-	-	1	-	-	-
Barbados	-	-	2	-	1	-	-	-	-	-	-	-
Bonaire, Saint Eustatius and Saba	-	-	-	-	-	-	-	-	-	-	-	-
British Virgin Islands	-	-	-	-	-	-	-	-	-	-	-	-
Cayman Islands	-	-	-	-	-	-	-	2	-	-	-	2
Cuba	2	3	-	-	2	2	4	-	1	-	5	2
Curacao	-	-	-	-	-	-	-	-	-	-	-	-
Dominica	1	-	-	-	-	-	-	-	3	-	1	-
Dominican Republic	1	-	3	-	-	-	-	-	1	1	-	-
Grenada	-	-	-	-	-	-	-	-	-	-	-	-
Guadeloupe	-	-	-	-	-	-	-	1	-	-	-	-
Haiti	-	-	-	-	-	-	-	-	-	-	-	-
Jamaica	-	-	1	1	-	4	-	-	-	-	16	-
Martinique	-	-	-	-	2	-	-	-	-	1	-	-
Montserrat	-	-	-	-	-	-	-	-	-	-	-	-
Puerto Rico	1	-	6	2	-	-	-	-	-	-	-	-
Saint-Barthelemy	-	-	-	-	-	-	-	-	-	-	-	-
Saint Kitts and Nevis	-	1	-	-	-	-	-	-	-	1	-	-
Saint Lucia	-	-	-	-	-	-	-	-	-	-	-	-
Saint Martin (French part)	-	-	-	-	-	-	-	-	-	-	-	-
Saint Vincent and the Grenadines	-	-	-	-	-	-	-	-	-	-	-	-
Saint Maarten (Dutch part)	-	-	-	-	-	-	-	-	-	-	-	-
Trinidad and Tobago	-	1	-	-	1	-	-	1	2	1	1	-
Turks and Caicos Islands	-	-	-	-	-	-	-	-	-	-	-	-
United States Virgin Islands	-	-	-	-	-	-	-	-	-	-	-	-
<b>Central America</b>	<b>3</b>	<b>8</b>	<b>7</b>	<b>6</b>	<b>4</b>	<b>1</b>	<b>8</b>	<b>2</b>	<b>16</b>	<b>19</b>	<b>16</b>	<b>11</b>
Belize	-	-	-	-	-	-	-	-	-	1	-	-
Costa Rica	-	-	-	-	-	-	-	-	2	-	-	-
El Salvador	1	-	-	-	-	-	-	-	-	-	-	2
Guatemala	-	-	-	-	-	-	1	-	1	-	-	-
Honduras	-	-	-	-	-	-	-	1	-	-	2	-
Mexico	2	8	7	4	4	1	7	-	13	18	14	9
Nicaragua	-	-	-	-	-	-	-	-	-	-	-	-
Panama	-	-	-	2	-	-	-	1	-	-	-	-
<b>South America</b>	<b>118</b>	<b>119</b>	<b>88</b>	<b>55</b>	<b>51</b>	<b>52</b>	<b>136</b>	<b>53</b>	<b>78</b>	<b>106</b>	<b>49</b>	<b>107</b>
Argentina	60	41	34	23	17	10	15	16	22	21	18	19
Bolivia	3	1	-	2	2	-	-	-	-	1	-	-
Brazil	46	70	36	20	25	31	83	26	40	65	24	84
Chile	3	4	6	3	2	2	11	-	2	2	4	2
Colombia	-	-	6	1	-	4	10	-	1	2	-	1
Ecuador	-	-	-	-	-	-	-	-	-	-	-	-
Falkland Islands (Malvinas)	-	-	-	-	-	-	-	5	-	-	-	-
French Guiana	-	-	-	-	-	-	-	-	-	-	-	-
Guyana	-	-	-	-	-	-	-	-	-	-	-	-
Paraguay	-	-	-	-	-	-	1	1	-	-	-	-
Peru	1	1	5	2	2	1	3	4	4	5	2	-
Suriname	-	-	-	-	-	-	-	1	-	3	-	-
Uruguay	-	2	1	2	3	-	6	-	6	6	-	-
Venezuela	5	-	-	2	-	4	7	-	3	1	1	1
<b>Northern America</b>	<b>393</b>	<b>297</b>	<b>409</b>	<b>328</b>	<b>298</b>	<b>465</b>	<b>436</b>	<b>460</b>	<b>430</b>	<b>514</b>	<b>442</b>	<b>476</b>
Bermuda	-	-	-	-	-	1	-	1	-	-	2	-
Canada	71	61	65	63	48	66	67	64	72	90	81	111
Greenland	-	-	-	-	-	1	-	-	-	-	-	-
Saint Pierre and Miquelon	-	-	-	-	-	-	-	-	-	-	-	-
United States of America	322	236	344	265	250	397	369	395	358	424	359	365

Source: National Bureau of Statistics from disembarkation cards

**Notes:**

- (1) Forms part of UK
- (2) Forms part of Mauritius

**VISITOR ARRIVALS BY GEOGRAPHICAL REGION - 2013**

Table 8

<b>GEOGRAPHICAL REGION</b>	<b>Jan-13</b>	<b>Feb-13</b>	<b>Mar-13</b>	<b>Apr-13</b>	<b>May-13</b>	<b>Jun-13</b>	<b>Jul-13</b>	<b>Aug-13</b>	<b>Sep-13</b>	<b>Oct-13</b>	<b>Nov-13</b>	<b>Dec-13</b>
<b>GRAND TOTAL</b>	<b>15,774</b>	<b>19,570</b>	<b>23,736</b>	<b>21,039</b>	<b>16,815</b>	<b>15,575</b>	<b>17,887</b>	<b>21,677</b>	<b>16,922</b>	<b>22,460</b>	<b>18,240</b>	<b>20,577</b>
<b>EUROPE TOTAL</b>	<b>10,786</b>	<b>13,906</b>	<b>17,364</b>	<b>15,232</b>	<b>12,147</b>	<b>9,466</b>	<b>12,538</b>	<b>14,433</b>	<b>11,550</b>	<b>15,441</b>	<b>13,246</b>	<b>12,139</b>
Eastern	2,863	2,391	2,858	2,642	2,181	1,288	1,319	1,221	1,012	1,788	2,166	2,851
Northern	1,007	1,734	1,975	1,327	1,250	1,361	1,960	1,480	1,520	2,070	1,645	1,788
Southern	1,300	1,790	2,559	2,616	1,531	1,902	2,218	4,455	2,590	1,987	1,480	1,728
Western	5,616	7,991	9,972	8,647	7,185	4,915	7,041	7,277	6,428	9,596	7,955	5,772
<b>AFRICA TOTAL</b>	<b>1,927</b>	<b>1,706</b>	<b>2,802</b>	<b>2,312</b>	<b>1,897</b>	<b>1,961</b>	<b>1,997</b>	<b>2,093</b>	<b>2,061</b>	<b>2,305</b>	<b>1,957</b>	<b>4,302</b>
Eastern	884	930	1,226	936	943	616	1,020	970	711	958	871	1,215
Middle	10	31	42	49	20	3	45	36	22	27	22	130
Northern	60	47	77	85	63	64	40	160	59	120	54	74
Southern	837	666	1,388	1,130	778	1,240	825	774	1,206	1,137	953	2,743
Western	136	32	69	112	93	38	67	153	63	63	57	140
<b>ASIA TOTAL</b>	<b>2,424</b>	<b>3,448</b>	<b>2,952</b>	<b>2,940</b>	<b>2,344</b>	<b>3,518</b>	<b>2,634</b>	<b>4,512</b>	<b>2,617</b>	<b>3,717</b>	<b>2,415</b>	<b>3,305</b>
Central	113	35	76	29	37	55	23	47	22	32	22	101
Eastern	434	1,763	437	492	544	811	911	1,212	1,070	1,245	601	746
Southern	273	304	263	289	280	424	197	203	189	273	363	559
South-Eastern	109	90	66	116	79	78	64	75	58	102	88	99
Western	1,495	1,256	2,110	2,014	1,404	2,150	1,439	2,975	1,278	2,065	1,341	1,800
<b>OCEANIA TOTAL</b>	<b>118</b>	<b>81</b>	<b>102</b>	<b>163</b>	<b>68</b>	<b>106</b>	<b>134</b>	<b>120</b>	<b>162</b>	<b>354</b>	<b>92</b>	<b>233</b>
Australia and New Zealand	118	80	102	162	63	103	132	116	141	351	90	230
Melanesia	0	1	0	0	2	2	1	3	2	1	1	-
Micronesia	0	0	0	0	0	-	1	0	1	2	-	-
Polynesia	0	0	0	1	3	1	0	1	18	-	1	3
<b>AMERICA TOTAL</b>	<b>519</b>	<b>429</b>	<b>516</b>	<b>392</b>	<b>359</b>	<b>524</b>	<b>584</b>	<b>519</b>	<b>532</b>	<b>643</b>	<b>530</b>	<b>598</b>
Caribbean	5	5	12	3	6	6	4	4	8	4	23	4
Central	3	8	7	6	4	1	8	2	16	19	16	11
South	118	119	88	55	51	52	136	53	78	106	49	107
Northern	393	297	409	328	298	465	436	460	430	514	442	476

Source: National Bureau of Statistics from disembarkation cards

**VISITOR ARRIVALS BY TYPE AND BY MODE OF TRANSPORT, 2012 - 2013**

**Table 9**

**Number of visitors**

<u>Year/Month</u>	TRANSIT			NON - TRANSIT			TOTAL VISITORS		
	Air	Sea	Total	Air	Sea	Total	Air	Sea	Total
<b><u>2012</u></b>									
January	191	171	362	13,304	7	13,311	13,495	178	13,673
February	17	5	22	16,093	2	16,095	16,110	7	16,117
March	25	435	460	18,798	529	19,327	18,823	964	19,787
April	82	-	82	19,900	67	19,967	19,982	67	20,049
May	29	-	29	14,834	6	14,840	14,863	6	14,869
June	44	-	44	13,853	21	13,874	13,897	21	13,918
July	22	-	22	17,366	7	17,373	17,388	7	17,395
August	38	-	38	18,823	26	18,849	18,861	26	18,887
September	53	-	53	15,405	4	15,409	15,458	4	15,462
October	58	34	92	20,891	40	20,931	20,949	74	21,023
November	44	-	44	16,139	62	16,201	16,183	62	16,245
December	73	-	73	20,477	59	20,536	20,550	59	20,609
<b>Total</b>	<b>676</b>	<b>645</b>	<b>1,321</b>	<b>205,883</b>	<b>830</b>	<b>206,713</b>	<b>206,559</b>	<b>1,475</b>	<b>208,034</b>
<b><u>2013</u></b>									
January	487	118	605	14,957	212	15,169	15,444	330	15,774
February	56	-	56	19,477	37	19,514	19,533	37	19,570
March	85	11	96	23,636	4	23,640	23,721	15	23,736
April	38	-	38	20,989	12	21,001	21,027	12	21,039
May	31	-	31	16,777	7	16,784	16,808	7	16,815
June	28	-	28	15,539	8	15,547	15,567	8	15,575
July	68	-	68	17,808	11	17,819	17,876	11	17,887
August	75	-	75	21,597	5	21,602	21,672	5	21,677
September	21	-	21	16,880	21	16,901	16,901	21	16,922
October	50	-	50	22,377	33	22,410	22,427	33	22,460
November	22	13	35	18,082	123	18,205	18,104	136	18,240
December	76	-	76	20,453	48	20,501	20,529	48	20,577
<b>Total</b>	<b>1,037</b>	<b>142</b>	<b>1,179</b>	<b>228,572</b>	<b>521</b>	<b>229,093</b>	<b>229,609</b>	<b>663</b>	<b>230,272</b>

Source: National Bureau of Statistics from disembarkation cards

**VISITORS STAY BY LOCATION - 2012**

*(Numbers)*

**Table 10(a)**

	Jan-12	Feb-12	Mar-12	Apr-12	May-12	Jun-12	Jul-12	Aug-12	Sep-12	Oct-12	Nov-12	Dec-12	Total
Mahe	8,448	9,638	10,796	10,621	8,867	8,451	10,432	11,118	8,890	11,841	9,338	11,882	<b>120,322</b>
Praslin	2,373	3,412	4,351	4,673	3,199	3,054	3,829	4,529	3,786	4,754	3,732	4,056	<b>45,748</b>
La Digue	635	953	1,144	1,059	652	584	903	950	853	1,096	803	1,144	<b>10,776</b>
Other Islands	1,208	1,444	2,072	2,607	1,590	1,534	1,962	1,943	1,604	2,602	1,765	2,815	<b>23,146</b>
On Vessel (1)	1,009	670	1,424	1,089	561	295	269	347	329	730	607	712	<b>8,042</b>
<b>Total</b>	<b>13,673</b>	<b>16,117</b>	<b>19,787</b>	<b>20,049</b>	<b>14,869</b>	<b>13,918</b>	<b>17,395</b>	<b>18,887</b>	<b>15,462</b>	<b>21,023</b>	<b>16,245</b>	<b>20,609</b>	<b>208,034</b>

**VISITORS STAY BY LOCATION - 2013**

*(Numbers)*

**Table 10(b)**

	Jan-13	Feb-13	Mar-13	Apr-13	May-13	Jun-13	Jul-13	Aug-13	Sep-13	Oct-13	Nov-13	Dec-13	Total
Mahe	9,415	11,873	13,089	12,244	9,988	9,847	10,935	13,382	10,075	13,214	10,660	13,146	<b>137,868</b>
Praslin	3,074	4,100	5,685	4,949	3,867	3,494	4,130	4,923	4,087	5,268	4,263	3,716	<b>51,556</b>
La Digue	605	1,020	1,525	1,206	879	623	878	1,262	930	1,246	938	1,127	<b>12,239</b>
Other Islands	1,220	1,688	2,271	1,680	1,307	1,245	1,444	1,621	1,321	1,870	1,344	1,716	<b>18,727</b>
On Vessel (1)	1,460	889	1,166	960	774	366	500	489	509	862	1,035	872	<b>9,882</b>
<b>Total</b>	<b>15,774</b>	<b>19,570</b>	<b>23,736</b>	<b>21,039</b>	<b>16,815</b>	<b>15,575</b>	<b>17,887</b>	<b>21,677</b>	<b>16,922</b>	<b>22,460</b>	<b>18,240</b>	<b>20,577</b>	<b>230,272</b>

**VISITORS STAY BY LOCATION - 2012**

*(Percentage)*

**Table 10(c)**

	Jan-12	Feb-12	Mar-12	Apr-12	May-12	Jun-12	Jul-12	Aug-12	Sep-12	Oct-12	Nov-12	Dec-12	Total
Mahe		60	55	53	60	61	60	59	57	56	57	58	<b>58</b>
Praslin	17	21	22	23	22	22	22	24	24	23	23	20	<b>22</b>
La Digue	5	6	6	5	4	4	5	5	6	5	5	6	<b>5</b>
Other Islands	9	9	10	13	11	11	11	10	10	12	11	14	<b>11</b>
On Vessel (1)	7	4	7	5	4	2	2	2	2	3	4	3	<b>4</b>
<b>Total</b>	<b>100</b>	<b>100</b>	<b>100</b>	<b>100</b>	<b>100</b>	<b>100</b>	<b>100</b>	<b>100</b>	<b>100</b>	<b>100</b>	<b>100</b>	<b>100</b>	<b>100</b>

**VISITORS STAY BY LOCATION - 2013**

*(Percentage)*

**Table 10 (d)**

	Jan-13	Feb-13	Mar-13	Apr-13	May-13	Jun-13	Jul-13	Aug-13	Sep-13	Oct-13	Nov-13	Dec-13	Total
Mahe	60	61	55	58	59	63	61	62	60	59	58	64	<b>60</b>
Praslin	19	21	24	24	23	22	23	23	24	23	23	18	<b>22</b>
La Digue	4	5	6	6	5	4	5	6	5	6	5	5	<b>5</b>
Other Islands	8	9	10	8	8	8	8	7	8	8	7	8	<b>8</b>
On Vessel (1)	9	5	5	5	5	2	3	2	3	4	6	4	<b>4</b>
<b>Total</b>	<b>100</b>	<b>100</b>	<b>100</b>	<b>100</b>	<b>100</b>	<b>100</b>	<b>100</b>	<b>100</b>	<b>100</b>	<b>100</b>	<b>100</b>	<b>100</b>	<b>100</b>

**Source: National Bureau of Statistics from disembarkation cards**

*(1) Includes yachts, cruise ship and sea bound vessels*

**VISITORS STAY BY ACCOMMODATION - 2012**

*(Numbers)*

**Table 11 (a)**

	Jan-12	Feb-12	Mar-12	Apr-12	May-12	Jun-12	Jul-12	Aug-12	Sep-12	Oct-12	Nov-12	Dec-12	Total
Hotels(1)	11,217	13,947	16,776	17,253	13,327	12,202	15,411	16,891	14,034	18,541	14,331	17,393	<b>181,323</b>
Friends	827	970	893	947	517	663	1,081	1,001	585	897	753	1,359	<b>10,493</b>
Yachts	600	661	953	978	533	289	265	337	318	669	531	707	<b>6,841</b>
Cruise Ships	123	6	461	-	-	-	1	-	-	15	40	-	<b>646</b>
Vessel	286	3	10	111	28	6	3	10	11	46	36	5	<b>555</b>
Others	620	530	694	760	464	758	634	648	514	855	554	1,145	<b>8,176</b>
<b>Total</b>	<b>13,673</b>	<b>16,117</b>	<b>19,787</b>	<b>20,049</b>	<b>14,869</b>	<b>13,918</b>	<b>17,395</b>	<b>18,887</b>	<b>15,462</b>	<b>21,023</b>	<b>16,245</b>	<b>20,609</b>	<b>208,034</b>

**VISITORS STAY BY ACCOMMODATION - 2013**

*(Numbers)*

**Table 11 (b)**

	Jan-13	Feb-13	Mar-13	Apr-13	May-13	Jun-13	Jul-13	Aug-13	Sep-13	Oct-13	Nov-13	Dec-13	Total
Hotels(1)	12,939	17,208	20,507	18,240	14,825	13,854	15,729	19,435	15,400	20,141	15,843	17,181	<b>201,302</b>
Friends	717	707	923	882	610	591	940	952	500	865	730	1,351	<b>9,768</b>
Yachts	893	838	1,121	951	760	364	487	474	493	833	986	848	<b>9,048</b>
Cruise Ships	562	46	39	-	-	-	-	-	-	-	4	-	<b>651</b>
Vessel	5	5	6	9	14	2	13	15	16	29	45	24	<b>183</b>
Others	658	766	1,140	957	606	764	718	801	513	592	632	1,173	<b>9,320</b>
<b>Total</b>	<b>15,774</b>	<b>19,570</b>	<b>23,736</b>	<b>21,039</b>	<b>16,815</b>	<b>15,575</b>	<b>17,887</b>	<b>21,677</b>	<b>16,922</b>	<b>22,460</b>	<b>18,240</b>	<b>20,577</b>	<b>230,272</b>

**VISITORS STAY BY ACCOMMODATION - 2012**

*(Percentage)*

**Table 11 (c)**

	Jan-12	Feb-12	Mar-12	Apr-12	May-12	Jun-12	Jul-12	Aug-12	Sep-12	Oct-12	Nov-12	Dec-12	Total
Hotels(1)	82	87	85	86	90	88	89	89	91	88	88	84	87
Friends	6	6	5	5	3	5	6	5	4	4	5	7	5
Yachts	4	4	5	5	4	2	2	2	2	3	3	3	3
Cruise Ships	1	0	2	0	0	0	0	0	0	0	0	0	0
Vessel	2	0	0	1	0	0	0	0	0	0	0	0	0
Others	5	3	4	4	3	5	4	3	3	4	3	6	4
<b>Total</b>	<b>100</b>	<b>100</b>	<b>100</b>	<b>100</b>	<b>100</b>	<b>100</b>	<b>100</b>	<b>100</b>	<b>100</b>	<b>100</b>	<b>100</b>	<b>100</b>	<b>100</b>

**VISITORS STAY BY ACCOMMODATION - 2013**

*(Percentage)*

**Table 11 (d)**

	Jan-13	Feb-13	Mar-13	Apr-13	May-13	Jun-13	Jul-13	Aug-13	Sep-13	Oct-13	Nov-13	Dec-13	Total
Hotels(1)	82	88	86	87	88	89	88	90	91	90	87	83	<b>87</b>
Friends	5	4	4	4	4	4	5	4	3	4	4	7	<b>4</b>
Yachts	6	4	5	5	5	2	3	2	3	4	5	4	<b>4</b>
Cruise Ships	4	0	0	0	0	0	0	0	0	0	0	0	<b>0</b>
Vessel	0	0	0	0	0	0	0	0	0	0	0	0	<b>0</b>
Others	4	4	5	5	4	5	4	4	3	3	3	6	<b>4</b>
<b>Total</b>	<b>100</b>	<b>100</b>	<b>100</b>	<b>100</b>	<b>100</b>	<b>100</b>	<b>100</b>	<b>100</b>	<b>100</b>	<b>100</b>	<b>100</b>	<b>100</b>	<b>100</b>

Source: National Bureau of Statistics from disembarkation cards

(1) Includes guest houses & self-catering establishments

**RESIDENTIAL STATUS AND INTENTION OF MIGRANTS  
2009 - 2013**

**Table 12**

<b>Type</b>	<b>2009</b>	<b>2010</b>	<b>2011</b>	<b>2012</b>	<b>2013</b>
<b><u>LONG TERM MIGRANTS</u></b>					
<b><u>ARRIVALS</u></b>					
Returning residents <sup>(1)</sup>	2,186	2,176	2,388	1,424	-
New immigrants <sup>(2)</sup>	4,147	3,640	2,155	2,304	1,654
<b><u>DEPARTURES</u></b>					
Permanent leavers					
- Seychellois	912	1,047	1,015	882	945
- Other <sup>(3)</sup>	4,043	4,130	3,956	3,738	3,133
Intention to return after a year or more	1,191	1,210	1,393	1,555	1,348
<b><u>ARRIVALS MINUS DEPARTURES</u></b>					
Long-term migrants	187	-571	-1,821	-2,447	-3,772
Short-term migrants	774	-185	2,424	3,302	1,972
Residents (short absences)	-1,902	-2,378	-1,393	-673	1,977
<b>TOTAL</b>	<b>-941</b>	<b>-3,134</b>	<b>-790</b>	<b>182</b>	<b>177</b>

**Source: National Bureau of Statistics from disembarkation and embarkation cards**

**Notes:**

(1) Residents returning after an absence of more than 12 months (As of 2013 this information is not from the Immigration disembarkation cards)

(2) Intending to stay for more than 12 months

(3) Residents for more than 12 months

**DEPARTURE OF RESIDENTS BY PURPOSE OF VISIT - 2013**

**Table 13**

Purpose of visit	LONG TERM DEPARTURES (more than 1 year)				SHORT TERM DEPARTURES (less than 1 year)				LONG AND SHORT TERM	
	Seychellois	Non Seychellois	Total long term	Percentage of Departures	Seychellois	Non Seychellois	Total short term	Percentage of Departures	Total Departures	Percentage of Total Departures
Holiday	143	2	145	2%	21,853	10,810	32,663	70%	32,808	60%
Emigration	1,458	832	2,290	28%	90	22	112	0%	2,402	4%
Education	374	14	388	5%	954	69	1,023	2%	1,411	3%
Business/Employment	282	6	288	4%	6,157	2,270	8,427	18%	8,715	16%
End of contract	0	4,984	4,984	61%	0	401	401	1%	5,385	10%
Medical treatment	0	0	0	0%	927	163	1,090	2%	1,090	2%
Other	36	22	58	1%	2,793	201	2,994	6%	3,052	6%
<b>TOTAL</b>	<b>2,293</b>	<b>5,860</b>	<b>8,153</b>	<b>100%</b>	<b>32,774</b>	<b>13,936</b>	<b>46,710</b>	<b>100%</b>	<b>54,863</b>	<b>100%</b>

Source: National Bureau of Statistics from embarkation cards

**DEPARTURE OF RESIDENTS BY CONTINENT OF DESTINATION - 2013**

**Table 14**

Continent of destination	LONG TERM DEPARTURES (more than 1 year)				SHORT TERM DEPARTURES (less than 1 year)				LONG AND SHORT TERM	
	Seychellois	Non Seychellois	Total long term	Percentage of Departures	Seychellois	Non Seychellois	Total short term	Percentage of Departures	Total Departures	Percentage of Total Departures
Europe	1,056	1,150	<b>2,206</b>	<b>27%</b>	4,516	3,250	<b>7,766</b>	<b>17%</b>	<b>9,972</b>	<b>18%</b>
Africa	230	906	<b>1,136</b>	<b>14%</b>	13,268	3,709	<b>16,977</b>	<b>36%</b>	<b>18,113</b>	<b>33%</b>
Asia	659	3,525	<b>4,184</b>	<b>51%</b>	14,371	6,558	<b>20,929</b>	<b>45%</b>	<b>25,113</b>	<b>46%</b>
Oceania	203	183	<b>386</b>	<b>5%</b>	280	203	<b>483</b>	<b>1%</b>	<b>869</b>	<b>2%</b>
America	145	96	<b>241</b>	<b>3%</b>	339	216	<b>555</b>	<b>1%</b>	<b>796</b>	<b>1%</b>
<b>TOTAL</b>	<b>2,293</b>	<b>5,860</b>	<b>8,153</b>	<b>100%</b>	<b>32,774</b>	<b>13,936</b>	<b>46,710</b>	<b>100%</b>	<b>54,863</b>	<b>100%</b>

Source: National Bureau of Statistics from embarkation cards



## AGE AND SEX DISTRIBUTION OF MIGRANTS - 2013

Table 15

Sex/Age	<u>MALES</u>					<u>FEMALES</u>					TOTAL
	0-14	15 - 29	30 - 44	45 - 64	65+	0 - 14	15 - 29	30 - 44	45 - 64	65+	
<b><u>LONG-TERM MIGRANTS</u></b>											
<b><u>ARRIVALS</u></b>											
Returning residents <sup>(1)</sup>	-	-	-	-	-	-	-	-	-	-	-
New immigrants	43	510	637	152	4	30	108	123	45	2	1,654
<b><u>DEPARTURES</u></b>											
Permanent:											
Seychellois	45	93	109	101	22	60	119	159	206	31	945
Other	80	969	1,223	349	27	58	154	147	107	19	3,133
Intention to return after one year or more	71	218	153	115	27	75	249	185	217	38	1,348
<b><u>NET MIGRATION</u></b>											
Long-term migrants	-153	-770	-848	-413	-72	-163	-414	-368	-485	-86	-3,772
Short-term migrants	-48	1,129	1,041	187	-23	-31	-64	-63	-128	-28	1,972
Residents (short absences)	81	-258	-30	146	132	102	350	446	854	154	1,977
<b>TOTAL NET MIGRATION</b>	<b>-120</b>	<b>101</b>	<b>163</b>	<b>-80</b>	<b>37</b>	<b>-92</b>	<b>-128</b>	<b>15</b>	<b>241</b>	<b>40</b>	<b>177</b>

Source: National Bureau of Statistics from disembarkation and embarkation cards

Notes:

(1) Residents returning after an absence of more than one year (As of 2013 this information is no longer available from the Immigration disembarkation cards)

RESIDENT DEPARTURES BY COUNTRY OF DESTINATION - 2013

Table 16(a)

Destination	PERMANENT DEPARTURES OF SEYCHELLOIS AND NON-SEYCHELLOIS ( More than 1 year )																								Total		Grand Total
	January		February		March		April		May		June		July		August		September		October		November		December		Sey	Non-Sey	
	Sey	Non-Sey	Sey	Non-Sey	Sey	Non-Sey	Sey	Non-Sey	Sey	Non-Sey	Sey	Non-Sey	Sey	Non-Sey	Sey	Non-Sey	Sey	Non-Sey	Sey	Non-Sey	Sey	Non-Sey	Sey	Non-Sey			
<b>Europe</b>	<b>171</b>	<b>119</b>	<b>61</b>	<b>53</b>	<b>54</b>	<b>96</b>	<b>97</b>	<b>96</b>	<b>67</b>	<b>40</b>	<b>69</b>	<b>79</b>	<b>59</b>	<b>129</b>	<b>181</b>	<b>163</b>	<b>135</b>	<b>119</b>	<b>56</b>	<b>41</b>	<b>59</b>	<b>111</b>	<b>47</b>	<b>104</b>	<b>1,056</b>	<b>1,150</b>	<b>2,206</b>
France	29	19	7	8	12	25	8	22	11	9	6	20	9	39	37	35	15	14	6	5	12	23	7	48	159	267	426
U.K & Eire	83	59	27	19	22	38	69	33	42	18	41	27	24	59	75	88	68	47	33	19	27	54	22	18	533	479	1,012
Germany	5	10	9	6	6	13	3	16	5	4	7	4	5	1	14	7	6	11	4	6	9	4	4	7	77	89	166
Italy	34	15	11	2	8	2	10	2	4	1	7	7	12	1	24	6	24	8	7	-	5	4	8	6	154	54	208
Scandinavia	4	2	-	1	2	-	-	2	-	3	1	2	1	2	1	-	-	6	-	-	1	3	-	1	10	22	32
Other Europe	16	14	7	17	4	18	7	21	5	5	7	19	8	27	30	27	22	33	6	11	5	23	6	24	123	239	362
<b>Africa</b>	<b>79</b>	<b>69</b>	<b>19</b>	<b>49</b>	<b>13</b>	<b>65</b>	<b>28</b>	<b>50</b>	<b>7</b>	<b>55</b>	<b>9</b>	<b>60</b>	<b>15</b>	<b>74</b>	<b>9</b>	<b>80</b>	<b>20</b>	<b>106</b>	<b>5</b>	<b>68</b>	<b>9</b>	<b>112</b>	<b>17</b>	<b>118</b>	<b>230</b>	<b>906</b>	<b>1,136</b>
South Africa	37	13	7	4	8	11	6	16	1	8	2	9	4	19	3	12	9	10	3	18	2	18	5	12	87	150	237
Kenya	3	5	5	6	4	8	6	5	-	8	4	13	3	3	-	8	6	8	1	2	-	14	2	11	34	91	125
Reunion	8	2	1	-	-	2	2	-	1	4	1	5	-	4	-	-	-	3	-	-	1	1	1	5	15	26	41
Mauritius	22	27	6	24	1	32	8	17	5	20	2	17	8	30	4	39	3	75	-	26	4	67	7	74	70	448	518
Madagascar	-	8	-	10	-	2	-	3	-	6	-	3	-	6	-	4	-	4	-	1	-	4	-	11	-	62	62
Other Africa	9	14	-	5	-	10	6	9	-	9	-	13	-	12	2	17	2	6	1	21	2	8	2	5	24	129	153
<b>Middle East</b>	<b>87</b>	<b>6</b>	<b>36</b>	<b>-</b>	<b>32</b>	<b>4</b>	<b>46</b>	<b>2</b>	<b>41</b>	<b>2</b>	<b>30</b>	<b>9</b>	<b>42</b>	<b>3</b>	<b>38</b>	<b>6</b>	<b>37</b>	<b>2</b>	<b>25</b>	<b>2</b>	<b>27</b>	<b>5</b>	<b>53</b>	<b>8</b>	<b>494</b>	<b>49</b>	<b>543</b>
UAE ( Dubai )	64	1	22	-	17	3	36	1	23	1	19	5	26	2	25	6	27	-	21	1	23	2	40	4	343	26	369
Qatar	11	-	11	-	7	1	5	-	12	-	8	-	8	-	8	-	7	-	2	-	1	1	10	2	90	4	94
Other Middle East	12	5	3	-	8	-	5	1	6	1	3	4	8	1	5	-	3	2	2	1	3	2	3	2	61	19	80
<b>Asia</b>	<b>18</b>	<b>318</b>	<b>18</b>	<b>173</b>	<b>9</b>	<b>260</b>	<b>17</b>	<b>275</b>	<b>15</b>	<b>328</b>	<b>13</b>	<b>524</b>	<b>14</b>	<b>221</b>	<b>18</b>	<b>178</b>	<b>19</b>	<b>211</b>	<b>8</b>	<b>278</b>	<b>10</b>	<b>238</b>	<b>6</b>	<b>472</b>	<b>165</b>	<b>3,476</b>	<b>3,641</b>
India	4	242	1	128	2	187	8	186	11	236	11	401	7	148	3	99	2	123	3	206	6	180	-	389	58	2,525	2,583
Other Indian Sub Continent	1	44	1	22	-	30	-	33	-	47	-	83	-	48	1	46	-	38	-	49	-	35	-	49	3	524	527
Singapore	8	-	1	-	-	-	-	-	-	-	1	-	-	-	-	2	-	-	-	1	-	2	5	1	15	6	21
Other Far East	5	32	15	23	7	43	9	56	4	45	1	40	7	25	14	31	17	50	5	22	4	21	1	33	89	421	510
<b>Oceania</b>	<b>78</b>	<b>51</b>	<b>19</b>	<b>21</b>	<b>10</b>	<b>12</b>	<b>11</b>	<b>9</b>	<b>10</b>	<b>8</b>	<b>14</b>	<b>20</b>	<b>15</b>	<b>14</b>	<b>3</b>	<b>12</b>	<b>13</b>	<b>8</b>	<b>11</b>	<b>8</b>	<b>4</b>	<b>12</b>	<b>15</b>	<b>8</b>	<b>203</b>	<b>183</b>	<b>386</b>
Australia	77	51	18	21	10	12	9	9	9	8	12	16	13	13	2	12	13	8	10	8	3	11	15	7	191	176	367
Other Oceania	1	-	1	-	-	-	2	-	1	-	2	4	2	1	1	-	-	-	1	-	1	1	-	1	12	7	19
<b>America</b>	<b>21</b>	<b>13</b>	<b>11</b>	<b>6</b>	<b>9</b>	<b>7</b>	<b>8</b>	<b>9</b>	<b>8</b>	<b>9</b>	<b>13</b>	<b>10</b>	<b>22</b>	<b>12</b>	<b>26</b>	<b>6</b>	<b>11</b>	<b>7</b>	<b>2</b>	<b>4</b>	<b>5</b>	<b>9</b>	<b>9</b>	<b>4</b>	<b>145</b>	<b>96</b>	<b>241</b>
Canada	14	8	5	2	6	2	4	-	3	1	7	4	17	5	14	5	1	2	1	2	4	3	5	2	81	36	117
Other America	7	5	6	4	3	5	4	9	5	8	6	6	5	7	12	1	10	5	1	2	1	6	4	2	64	60	124
<b>Total</b>	<b>454</b>	<b>576</b>	<b>164</b>	<b>302</b>	<b>127</b>	<b>444</b>	<b>207</b>	<b>441</b>	<b>148</b>	<b>442</b>	<b>148</b>	<b>702</b>	<b>167</b>	<b>453</b>	<b>275</b>	<b>445</b>	<b>235</b>	<b>453</b>	<b>107</b>	<b>401</b>	<b>114</b>	<b>487</b>	<b>147</b>	<b>714</b>	<b>2,293</b>	<b>5,860</b>	<b>8,153</b>
		<b>1,030</b>		<b>466</b>		<b>571</b>		<b>648</b>		<b>590</b>		<b>850</b>		<b>620</b>		<b>720</b>		<b>688</b>		<b>508</b>		<b>601</b>		<b>861</b>			<b>8,153</b>

Table 16(b)

TEMPORARY OF DEPARTURES OF SEYCHELLOIS AND NON-SEYCHELLOIS ( Less than 1 year )																											
Destination	January		February		March		April		May		June		July		August		September		October		November		December		Total		Grand Total
	Sej	Non-Sej	Sej	Non-Sej	Sej	Non-Sej	Sej	Non-Sej	Sej	Non-Sej	Sej	Non-Sej	Sej	Non-Sej	Sej	Non-Sej	Sej	Non-Sej	Sej	Non-Sej	Sej	Non-Sej	Sej	Non-Sej	Sej	Non-Sej	
<b>Europe</b>	<b>287</b>	<b>370</b>	<b>220</b>	<b>194</b>	<b>261</b>	<b>248</b>	<b>334</b>	<b>256</b>	<b>334</b>	<b>213</b>	<b>462</b>	<b>298</b>	<b>562</b>	<b>354</b>	<b>722</b>	<b>290</b>	<b>421</b>	<b>266</b>	<b>278</b>	<b>180</b>	<b>250</b>	<b>226</b>	<b>385</b>	<b>355</b>	<b>4,516</b>	<b>3,250</b>	<b>7,766</b>
France	31	70	38	24	37	47	28	67	54	46	59	73	86	90	68	67	71	41	39	28	37	39	51	111	599	703	1,302
U.K & Eire	119	76	82	62	106	76	151	50	145	61	175	53	225	96	359	86	181	63	113	55	97	61	182	86	1,935	825	2,760
Germany	29	13	20	20	36	29	29	18	27	16	42	33	47	36	52	21	33	34	36	16	32	27	44	24	427	287	714
Italy	55	34	34	22	35	18	52	31	38	15	52	34	117	23	120	24	54	37	29	15	23	17	39	26	648	296	944
Scandinavia	4	13	5	3	2	7	7	8	5	7	6	3	7	4	13	5	7	1	3	3	1	7	2	10	62	71	133
Other Europe	49	164	41	63	45	71	67	82	65	68	128	102	80	105	110	87	75	90	58	63	60	75	67	98	845	1,068	1,913
<b>Africa</b>	<b>735</b>	<b>358</b>	<b>786</b>	<b>243</b>	<b>887</b>	<b>287</b>	<b>1,109</b>	<b>293</b>	<b>1,154</b>	<b>303</b>	<b>971</b>	<b>329</b>	<b>1,063</b>	<b>281</b>	<b>1,213</b>	<b>303</b>	<b>1,048</b>	<b>215</b>	<b>1,149</b>	<b>258</b>	<b>1,581</b>	<b>268</b>	<b>1,572</b>	<b>571</b>	<b>13,268</b>	<b>3,709</b>	<b>16,977</b>
South Africa	224	99	342	74	365	94	294	89	259	93	205	67	225	69	293	85	456	80	515	87	689	74	574	120	4,441	1,031	5,472
Kenya	49	22	65	34	41	25	63	26	75	22	80	52	54	33	85	48	74	20	59	29	61	24	79	93	785	428	1,213
Reunion	15	12	35	7	12	13	15	22	18	4	28	10	26	13	44	8	26	1	16	6	19	3	29	14	283	113	396
Mauritius	386	107	284	85	381	92	621	87	635	139	562	85	579	108	693	118	393	68	450	92	721	121	767	195	6,472	1,297	7,769
Madagascar	2	21	6	24	10	27	4	31	24	24	5	85	5	15	5	13	5	19	20	12	1	15	19	85	106	371	477
Other Africa	59	97	54	19	78	36	112	38	143	21	91	30	174	43	93	31	94	27	89	32	90	31	104	64	1,181	469	1,650
<b>Middle East</b>	<b>731</b>	<b>41</b>	<b>569</b>	<b>56</b>	<b>799</b>	<b>50</b>	<b>790</b>	<b>55</b>	<b>748</b>	<b>66</b>	<b>891</b>	<b>65</b>	<b>679</b>	<b>44</b>	<b>909</b>	<b>78</b>	<b>718</b>	<b>37</b>	<b>878</b>	<b>90</b>	<b>939</b>	<b>44</b>	<b>1,064</b>	<b>47</b>	<b>9,715</b>	<b>673</b>	<b>10,388</b>
UAE ( Dubai )	652	35	510	46	730	45	724	41	682	56	837	56	599	31	828	65	688	21	836	82	893	40	1,002	37	8,981	555	9,536
Qatar	56	-	37	4	49	1	43	5	53	2	43	-	42	1	50	8	12	2	11	2	21	-	24	-	441	25	466
Other Middle East	23	6	22	6	20	4	23	9	13	8	11	9	38	12	31	5	18	14	31	6	25	4	38	10	293	93	386
<b>Asia</b>	<b>275</b>	<b>499</b>	<b>227</b>	<b>372</b>	<b>467</b>	<b>526</b>	<b>620</b>	<b>592</b>	<b>358</b>	<b>520</b>	<b>365</b>	<b>431</b>	<b>357</b>	<b>548</b>	<b>377</b>	<b>472</b>	<b>344</b>	<b>414</b>	<b>347</b>	<b>477</b>	<b>409</b>	<b>455</b>	<b>510</b>	<b>579</b>	<b>4,656</b>	<b>5,885</b>	<b>10,541</b>
India	131	278	104	218	115	255	90	346	123	333	96	264	138	342	121	279	121	229	130	300	133	255	136	304	1,438	3,403	4,841
Other Indian Sub Continent	7	112	7	73	13	67	5	110	23	100	13	82	17	106	24	85	12	98	18	91	89	111	122	152	350	1,187	1,537
Singapore	38	6	43	4	64	13	42	4	26	4	32	3	54	8	36	5	35	6	21	4	44	9	83	7	518	73	591
Other Far East	99	103	73	77	275	191	483	132	186	83	224	82	148	92	196	103	176	81	178	82	143	80	169	116	2,350	1,222	3,572
<b>Oceania</b>	<b>23</b>	<b>37</b>	<b>32</b>	<b>20</b>	<b>29</b>	<b>11</b>	<b>19</b>	<b>21</b>	<b>13</b>	<b>19</b>	<b>12</b>	<b>7</b>	<b>19</b>	<b>5</b>	<b>16</b>	<b>5</b>	<b>26</b>	<b>19</b>	<b>22</b>	<b>9</b>	<b>14</b>	<b>15</b>	<b>55</b>	<b>35</b>	<b>280</b>	<b>203</b>	<b>483</b>
Australia	23	36	32	20	27	10	18	18	13	18	12	6	19	5	13	5	26	19	20	9	13	14	51	34	267	194	461
Other Oceania	-	1	-	-	2	1	1	3	-	1	-	1	-	-	3	-	-	-	2	-	1	1	4	1	13	9	22
<b>America</b>	<b>27</b>	<b>36</b>	<b>9</b>	<b>6</b>	<b>23</b>	<b>12</b>	<b>56</b>	<b>14</b>	<b>23</b>	<b>19</b>	<b>24</b>	<b>11</b>	<b>46</b>	<b>26</b>	<b>46</b>	<b>28</b>	<b>14</b>	<b>20</b>	<b>36</b>	<b>11</b>	<b>20</b>	<b>10</b>	<b>15</b>	<b>23</b>	<b>339</b>	<b>216</b>	<b>555</b>
Canada	9	10	3	-	16	2	6	4	5	8	9	1	8	6	13	11	3	5	4	4	8	2	3	8	87	61	148
Other America	18	26	6	6	7	10	50	10	18	11	15	10	38	20	33	17	11	15	32	7	12	8	12	15	252	155	407
<b>Total</b>	<b>2,078</b>	<b>1,341</b>	<b>1,843</b>	<b>891</b>	<b>2,466</b>	<b>1,134</b>	<b>2,928</b>	<b>1,231</b>	<b>2,630</b>	<b>1,140</b>	<b>2,725</b>	<b>1,141</b>	<b>2,726</b>	<b>1,258</b>	<b>3,283</b>	<b>1,176</b>	<b>2,571</b>	<b>971</b>	<b>2,710</b>	<b>1,025</b>	<b>3,213</b>	<b>1,018</b>	<b>3,601</b>	<b>1,610</b>	<b>32,774</b>	<b>13,936</b>	<b>46,710</b>
		<b>3,419</b>		<b>2,734</b>		<b>3,600</b>		<b>4,159</b>		<b>3,770</b>		<b>3,866</b>		<b>3,984</b>		<b>4,459</b>		<b>3,542</b>		<b>3,735</b>		<b>4,231</b>		<b>5,211</b>			
<b>Grand Total</b>	<b>4,449</b>	<b>3,200</b>	<b>4,171</b>	<b>4,807</b>	<b>4,360</b>	<b>4,716</b>	<b>4,604</b>	<b>5,179</b>	<b>4,230</b>	<b>4,243</b>	<b>4,832</b>	<b>6,072</b>	<b>35,067</b>	<b>19,796</b>	<b>54,863</b>												

Source: National Bureau of Statistics from disembarkation cards

RESIDENT DEPARTURES BY PURPOSE OF VISIT - 2013

Table 17

PERMANENT DEPARTURE OF SEYCHELLOIS AND NON-SEYCHELLOIS ( More than 1 year )																					
Purpose of Visit	Holiday		Emigration		Business		Education		Med. Treatment		Employment		End of Cont.		Others/ Sport			Total		Grand Total	
Months	Sey	Non-Sey	Sey	Non-Sey	Sey	Non-Sey	Sey	Non-Sey	Sey	Non-Sey	Sey	Non-Sey	Sey	Non-Sey	Sey	Non-Sey	Sey	Non-Sey	Sey	Non-Sey	
January	26	1	291	165	4	1	93	1	-	-	31	1	-	407	9	-			454	576	1,030
February	9	-	97	46	9	-	22	1	-	-	26	-	-	255	1	-			164	302	466
March	18	-	67	52	6	-	18	2	-	-	16	-	-	390	2	-			127	444	571
April	13	1	150	48	4	-	12	-	-	-	24	-	-	392	4	-			207	441	648
May	26	-	85	34	3	-	14	2	-	-	20	-	-	406	-	-			148	442	590
June	2	-	100	63	4	-	15	2	-	-	22	-	-	635	5	2			148	702	850
July	8	-	112	76	-	1	25	-	-	-	22	-	-	367	-	9			167	453	620
August	8	-	181	131	-	-	54	4	-	-	22	-	-	309	10	1			275	445	720
September	19	-	116	65	4	2	77	-	-	-	15	-	-	386	4	-			235	453	688
October	-	-	73	27	2	-	21	2	-	-	10	-	-	362	1	10			107	401	508
November	-	-	74	80	4	1	15	-	-	-	21	-	-	406	-	-			114	487	601
December	14	-	112	45	2	-	8	-	-	-	11	-	-	669	-	-			147	714	861
<b>Total</b>	<b>143</b>	<b>2</b>	<b>1,458</b>	<b>832</b>	<b>42</b>	<b>5</b>	<b>374</b>	<b>14</b>	<b>-</b>	<b>-</b>	<b>240</b>	<b>1</b>	<b>-</b>	<b>4,984</b>	<b>36</b>	<b>22</b>			<b>2,293</b>	<b>5,860</b>	<b>8,153</b>

TEMPORARY DEPARTURE OF SEYCHELLOIS AND NON-SEYCHELLOIS ( Less than 1 year )																					
Purpose of Visit	Holiday		Emigration		Business		Education		Med. Treatment		Employment		End of Cont.		Others/ Sport			Crew	Total		Grand Total
Months	Sey	Non-Sey	Sey	Non-Sey	Sey	Non-Sey	Sey	Non-Sey	Sey	Non-Sey	Sey	Non-Sey	Sey	Non-Sey	Sey	Non-Sey	Sey	Non-Sey	Sey	Non-Sey	
January	1,369	1,076	5	1	375	162	120	16	59	18	17	-	-	35	73	33	60	-	2,078	1,341	3,419
February	1,084	646	-	3	382	186	91	4	68	16	2	1	-	23	161	11	55	1	1,843	891	2,734
March	1,645	859	8	1	472	212	63	2	92	16	1	-	-	24	114	20	71	-	2,466	1,134	3,600
April	2,022	965	9	2	509	185	50	10	85	11	12	-	-	31	194	27	47	-	2,928	1,231	4,159
May	1,666	893	3	-	587	201	69	2	69	11	6	-	-	20	162	12	68	1	2,630	1,140	3,770
June	1,786	904	3	-	556	165	66	9	73	9	7	-	-	31	195	22	39	1	2,725	1,141	3,866
July	1,649	1,038	3	1	491	136	92	5	77	9	7	-	-	49	380	20	27	-	2,726	1,258	3,984
August	2,297	958	34	9	421	146	105	9	93	9	8	-	-	36	285	9	40	-	3,283	1,176	4,459
September	1,571	661	-	-	623	238	112	4	73	18	4	-	-	43	154	7	34	-	2,571	971	3,542
October	1,742	741	25	5	540	211	70	-	90	19	1	-	-	28	197	20	45	1	2,710	1,025	3,735
November	2,108	717	-	-	712	241	70	6	86	16	28	1	-	29	180	8	29	-	3,213	1,018	4,231
December	2,914	1,352	-	-	394	185	46	2	62	11	2	-	-	52	118	8	65	-	3,601	1,610	5,211
<b>Total</b>	<b>21,853</b>	<b>10,810</b>	<b>90</b>	<b>22</b>	<b>6,062</b>	<b>2,268</b>	<b>954</b>	<b>69</b>	<b>927</b>	<b>163</b>	<b>95</b>	<b>2</b>	<b>-</b>	<b>401</b>	<b>2,213</b>	<b>197</b>	<b>580</b>	<b>4</b>	<b>32,774</b>	<b>13,936</b>	<b>46,710</b>
<b>Grand Total</b>	<b>21,996</b>	<b>10,812</b>	<b>1,548</b>	<b>854</b>	<b>6,104</b>	<b>2,273</b>	<b>1,328</b>	<b>83</b>	<b>927</b>	<b>163</b>	<b>335</b>	<b>3</b>	<b>-</b>	<b>5,385</b>	<b>2,249</b>	<b>219</b>	<b>580</b>	<b>4</b>	<b>35,067</b>	<b>19,796</b>	<b>54,863</b>

Source: National Bureau of Statistics from disembarkation cards

**BEDS, BED-NIGHTS OCCUPIED AND BED-OCCUPANCY RATES, 2008 - 2013**

**Table 18**

	<b>2008</b>	<b>2009</b>	<b>2010</b>	<b>2011</b>	<b>2012</b>	<b>2013</b>
<b>AVERAGE NO OF BEDS AVAILABLE</b>	<b>4,840</b>	<b>5,050</b>	<b>5,280</b>	<b>6,040</b>	<b>6,550</b>	<b>6,490</b>
<b>BED-NIGHTS OCCUPIED ('000)</b>						
January	86.9	71.7	91.4	103.1	104.7	118.4
February	81.4	69.5	81.9	104.4	99.0	119.2
March	96.3	80.5	95.1	118.8	110.6	131.5
April	90.6	84.5	86.8	120.2	117.7	129.3
May	78.0	79.8	84.6	110.7	116.7	128.0
June	64.3	75.2	83.9	107.4	103.6	114.0
July	81.4	85.3	85.9	112.4	117.8	124.8
August	100.2	93.2	96.7	125.4	125.9	134.4
September	78.6	89.0	89.0	110.7	115.6	128.6
October	92.9	92.9	106.5	114.5	131.4	135.2
November	80.3	93.6	96.8	109.5	119.3	125.9
December	76.2	87.6	98.4	100.9	113.2	122.8
<b>YEAR</b>	<b>1,007.0</b>	<b>1,003.0</b>	<b>1,097.1</b>	<b>1,338.1</b>	<b>1,375.3</b>	<b>1,512.1</b>
<b>BED-OCCUPANCY RATES (%)</b>						
January	55	46	58	54	53	58
February	57	51	56	60	54	65
March	62	52	56	62	56	65
April	62	56	55	64	59	66
May	56	51	52	60	57	64
June	51	51	52	60	52	59
July	56	54	52	61	58	62
August	65	59	58	68	61	67
September	53	58	56	62	58	66
October	60	58	63	62	64	67
November	54	60	62	61	60	65
December	50	55	61	54	55	61
<b>YEAR</b>	<b>57</b>	<b>54</b>	<b>57</b>	<b>61</b>	<b>57</b>	<b>64</b>

Source: National Bureau of Statistics (Hotel returns)

**BEDS AVAILABLE AND OCCUPIED BY TYPE OF ACCOMMODATION AND LOCATION - 2013**

**Table 19a: BEDS AVAILABLE BY TYPE OF ACCOMMODATION AND ISLAND ('000)**

		Jan-13	Feb-13	Mar-13	Apr-13	May-13	Jun-13	Jul-13	Aug-13	Sep-13	Oct-13	Nov-13	Dec-13	TOTAL
<b>Hotels</b>	Mahe	78.9	71.3	78.4	75.2	77.9	75.4	77.7	77.7	75.2	77.7	75.2	77.7	<b>918.6</b>
	Praslin	35.5	31.1	34.3	33.2	34.3	33.2	34.3	34.3	33.2	34.3	33.2	34.3	<b>405.7</b>
	La Digue	8.9	8.1	8.9	8.6	8.9	8.6	8.9	8.9	8.6	8.9	8.6	8.9	<b>105.1</b>
	Other Islands	14.2	12.8	14.2	13.7	14.2	13.7	14.2	14.2	13.7	14.2	13.7	14.2	<b>167.2</b>
<b>Guest Houses</b>	Mahe	18.2	16.4	18.2	17.6	18.2	17.6	18.2	18.2	17.6	18.2	17.6	18.2	<b>213.9</b>
	Praslin	8.4	7.6	8.4	8.1	8.3	8.0	8.3	8.3	8.0	8.3	8.0	8.3	<b>97.8</b>
	La Digue	5.9	5.4	6.0	5.8	6.0	5.8	6.0	6.0	5.8	6.0	5.8	6.0	<b>70.7</b>
	Other Islands	7.3	6.6	7.3	7.0	7.3	6.2	6.2	7.3	7.0	7.3	7.0	7.3	<b>83.5</b>
<b>Self Catering</b>	Mahe	17.3	15.7	17.4	16.8	17.4	16.8	17.4	17.4	16.8	17.4	16.8	17.4	<b>204.3</b>
	Praslin	4.7	4.2	4.7	4.6	4.7	4.5	4.7	4.7	4.5	4.7	4.5	4.7	<b>55.2</b>
	La Digue	3.9	3.5	3.9	3.8	4.0	3.8	4.0	4.0	3.8	4.0	3.8	4.0	<b>46.5</b>
<b>TOTAL</b>	<b>203.2</b>	<b>182.7</b>	<b>201.6</b>	<b>194.6</b>	<b>201.1</b>	<b>193.8</b>	<b>199.9</b>	<b>200.9</b>	<b>194.5</b>	<b>200.9</b>	<b>194.5</b>	<b>200.9</b>	<b>2,368.6</b>	

**Table 19b: BEDS OCCUPIED BY TYPE OF ACCOMMODATION AND ISLAND ('000)**

		Jan-13	Feb-13	Mar-13	Apr-13	May-13	Jun-13	Jul-13	Aug-13	Sep-13	Oct-13	Nov-13	Dec-13	TOTAL
<b>Hotels</b>	Mahe	47.7	51.8	55.2	54.1	54.6	51.4	51.4	54.7	55.7	57.2	51.0	50.3	<b>635.2</b>
	Praslin	22.7	19.3	25.2	25.3	23.3	15.3	22.7	26.5	20.7	26.4	23.6	21.4	<b>272.5</b>
	La Digue	5.9	5.9	6.2	6.3	6.6	6.6	6.7	6.8	6.9	5.3	5.4	5.1	<b>73.9</b>
	Other Islands	9.2	9.0	10.1	10.1	10.3	9.7	11.6	12.0	11.6	10.8	10.9	11.3	<b>126.7</b>
<b>Guest Houses</b>	Mahe	9.0	8.7	8.9	8.9	8.8	8.4	8.7	9.1	8.8	9.3	9.2	9.1	<b>106.7</b>
	Praslin	4.6	4.6	4.9	4.6	4.6	4.5	4.6	4.5	4.8	5.1	5.0	5.1	<b>56.9</b>
	La Digue	3.2	3.2	3.2	3.1	3.1	2.9	3.2	3.3	3.2	3.2	3.2	3.1	<b>37.9</b>
	Other Islands	3.6	4.2	4.2	3.8	3.8	2.7	2.9	4.0	3.7	4.3	4.0	4.0	<b>45.0</b>
<b>Self Catering</b>	Mahe	7.9	8.2	8.8	8.6	8.4	8.0	8.7	8.7	8.6	8.8	8.5	8.7	<b>101.9</b>
	Praslin	2.6	2.2	2.5	2.4	2.4	2.5	2.4	2.4	2.5	2.6	2.6	2.6	<b>29.7</b>
	La Digue	2.0	2.0	2.2	2.1	2.2	2.0	2.1	2.2	2.2	2.3	2.2	2.2	<b>25.7</b>
<b>TOTAL</b>	<b>118.4</b>	<b>119.2</b>	<b>131.5</b>	<b>129.3</b>	<b>128.0</b>	<b>114.0</b>	<b>124.8</b>	<b>134.4</b>	<b>128.6</b>	<b>135.2</b>	<b>125.9</b>	<b>122.8</b>	<b>1,512.1</b>	

**ROOMS AVAILABLE AND ROOMS OCCUPIED BY TYPE OF ACCOMMODATION AND ISLAND - 2013**

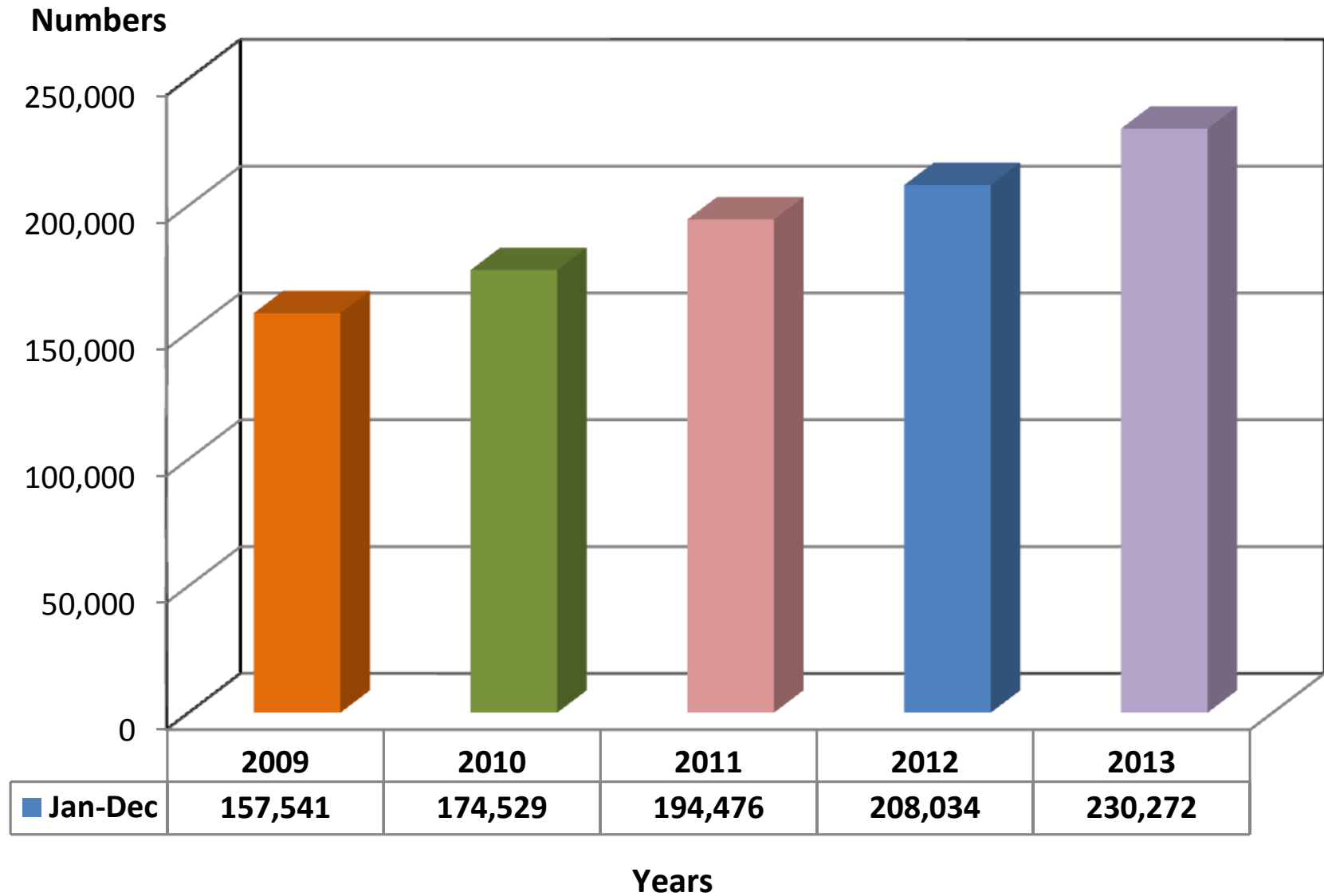
**Table 20a: ROOMS AVAILABLE BY TYPE OF ACCOMMODATION AND ISLAND ('000)**

		Jan-13	Feb-13	Mar-13	Apr-13	May-13	Jun-13	Jul-13	Aug-13	Sep-13	Oct-13	Nov-13	Dec-13	TOTAL
<b>Hotels</b>	Mahe	37.6	34.0	37.4	35.9	37.1	35.9	37.1	37.1	35.9	37.1	35.9	37.1	<b>438.3</b>
	Praslin	17.7	16.0	17.7	17.1	17.7	17.1	17.7	17.7	17.1	17.7	17.1	17.7	<b>208.4</b>
	La Digue	4.5	4.0	4.5	4.3	4.5	4.3	4.5	4.5	4.3	4.5	4.3	4.5	<b>52.6</b>
	Other Islands	6.9	6.2	6.9	6.7	6.9	6.7	6.9	6.9	6.7	6.9	6.7	6.9	<b>81.4</b>
<b>Guest Houses</b>	Mahe	8.9	8.0	8.9	8.6	8.9	8.6	8.9	8.9	8.6	8.9	8.6	8.9	<b>104.8</b>
	Praslin	4.3	3.9	4.3	4.2	4.3	4.2	4.3	4.3	4.2	4.3	4.2	4.3	<b>51.1</b>
	La Digue	2.6	2.3	2.6	2.5	2.6	2.5	2.6	2.6	2.5	2.6	2.5	2.6	<b>30.3</b>
	Other Islands	3.5	3.1	3.5	3.4	3.5	3.0	2.9	3.5	3.4	3.5	3.4	3.5	<b>39.9</b>
<b>Self Catering</b>	Mahe	8.2	7.8	8.6	8.3	8.6	8.3	8.6	8.6	8.3	8.6	8.3	8.6	<b>100.5</b>
	Praslin	2.3	2.1	2.3	2.3	2.4	2.3	2.4	2.4	2.3	2.4	2.3	2.4	<b>27.6</b>
	La Digue	1.9	1.7	1.9	1.8	1.9	1.8	1.9	1.9	1.8	1.9	1.8	1.9	<b>21.9</b>
<b>TOTAL</b>	<b>98.4</b>	<b>89.2</b>	<b>98.5</b>	<b>95.0</b>	<b>98.2</b>	<b>94.7</b>	<b>97.7</b>	<b>98.3</b>	<b>95.1</b>	<b>98.3</b>	<b>95.1</b>	<b>98.3</b>	<b>1,156.8</b>	

**Table 20b: ROOMS OCCUPIED BY TYPE OF ACCOMMODATION AND ISLAND ('000)**

		Jan-13	Feb-13	Mar-13	Apr-13	May-13	Jun-13	Jul-13	Aug-13	Sep-13	Oct-13	Nov-13	Dec-13	TOTAL
<b>Hotels</b>	Mahe	24.0	26.4	28.4	27.1	27.9	25.6	28.6	29.1	27.2	28.8	25.7	25.3	<b>324.3</b>
	Praslin	10.4	8.9	11.6	11.4	11.5	8.4	10.9	12.7	11.0	13.3	12.4	11.7	<b>134.2</b>
	La Digue	2.1	2.0	2.1	2.6	2.8	2.8	2.7	2.7	2.7	2.6	2.7	2.4	<b>30.2</b>
	Other Islands	4.5	4.4	4.8	4.5	4.7	4.4	5.3	5.5	5.6	5.0	4.5	3.9	<b>57.0</b>
<b>Guest Houses</b>	Mahe	4.8	4.7	5.0	4.9	4.9	4.8	4.8	4.9	4.8	5.0	4.9	4.8	<b>58.3</b>
	Praslin	2.5	2.5	2.7	2.6	2.5	2.4	2.5	2.5	2.6	2.7	2.7	2.8	<b>30.9</b>
	La Digue	1.7	1.6	1.7	1.7	1.7	1.6	1.7	1.7	1.7	1.7	1.7	1.6	<b>19.9</b>
	Other Islands	1.9	1.8	1.9	1.6	1.7	1.4	1.3	1.7	1.6	1.9	1.8	1.6	<b>20.1</b>
<b>Self Catering</b>	Mahe	3.8	4.0	4.1	4.0	3.8	3.8	3.9	3.9	3.8	3.9	3.9	3.8	<b>46.8</b>
	Praslin	1.1	1.1	1.1	1.1	1.1	1.1	1.1	1.1	1.1	1.1	1.1	1.1	<b>13.4</b>
	La Digue	1.0	1.0	1.1	1.0	1.0	0.9	1.0	1.0	0.9	1.0	1.0	0.9	<b>11.9</b>
<b>TOTAL</b>	<b>57.7</b>	<b>58.5</b>	<b>64.5</b>	<b>62.6</b>	<b>63.5</b>	<b>57.1</b>	<b>63.7</b>	<b>66.9</b>	<b>63.1</b>	<b>67.0</b>	<b>62.4</b>	<b>59.9</b>	<b>747.0</b>	

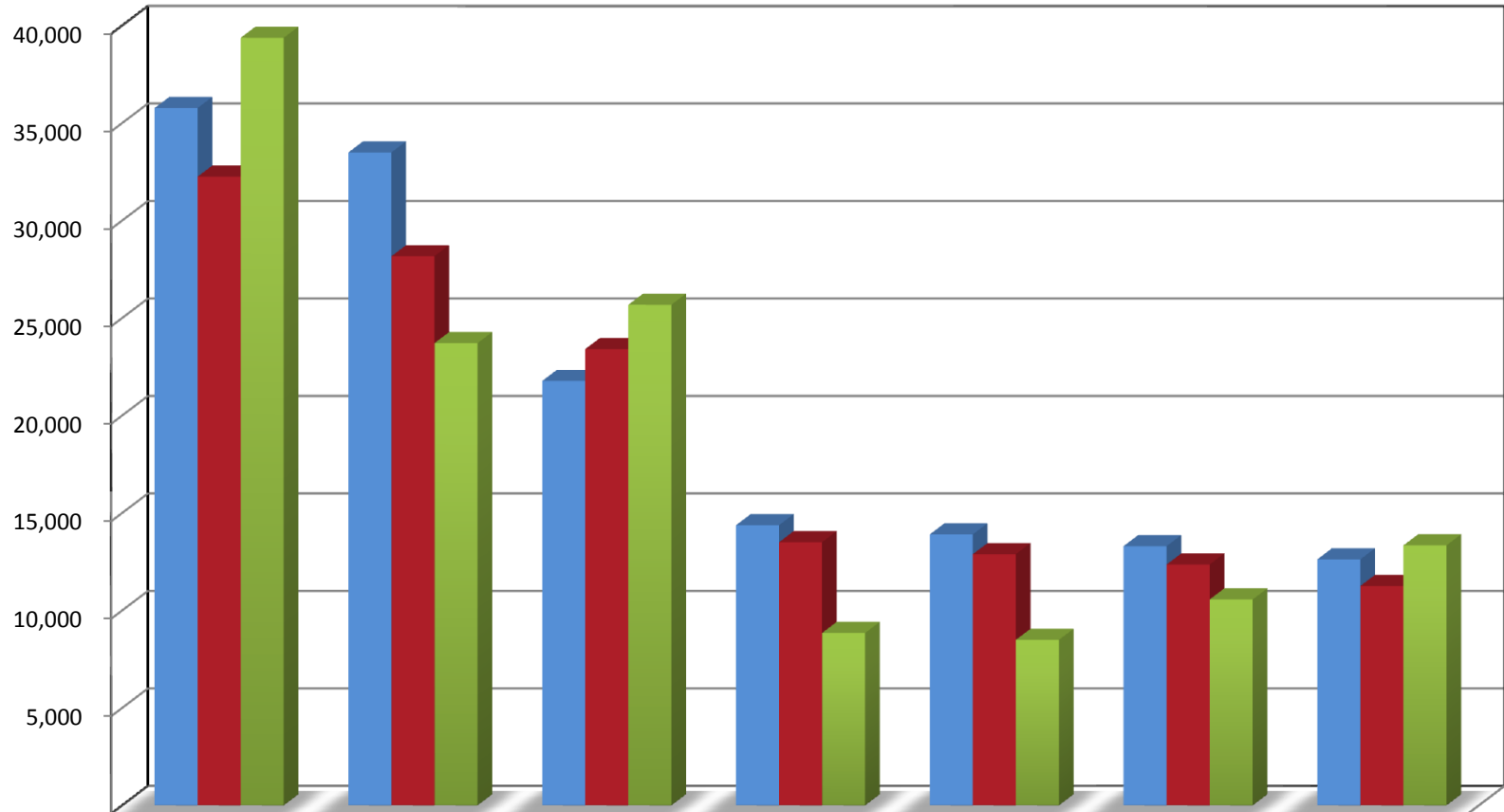
**Chart 2: Visitor Arrivals, January - December (2009 - 2013)**





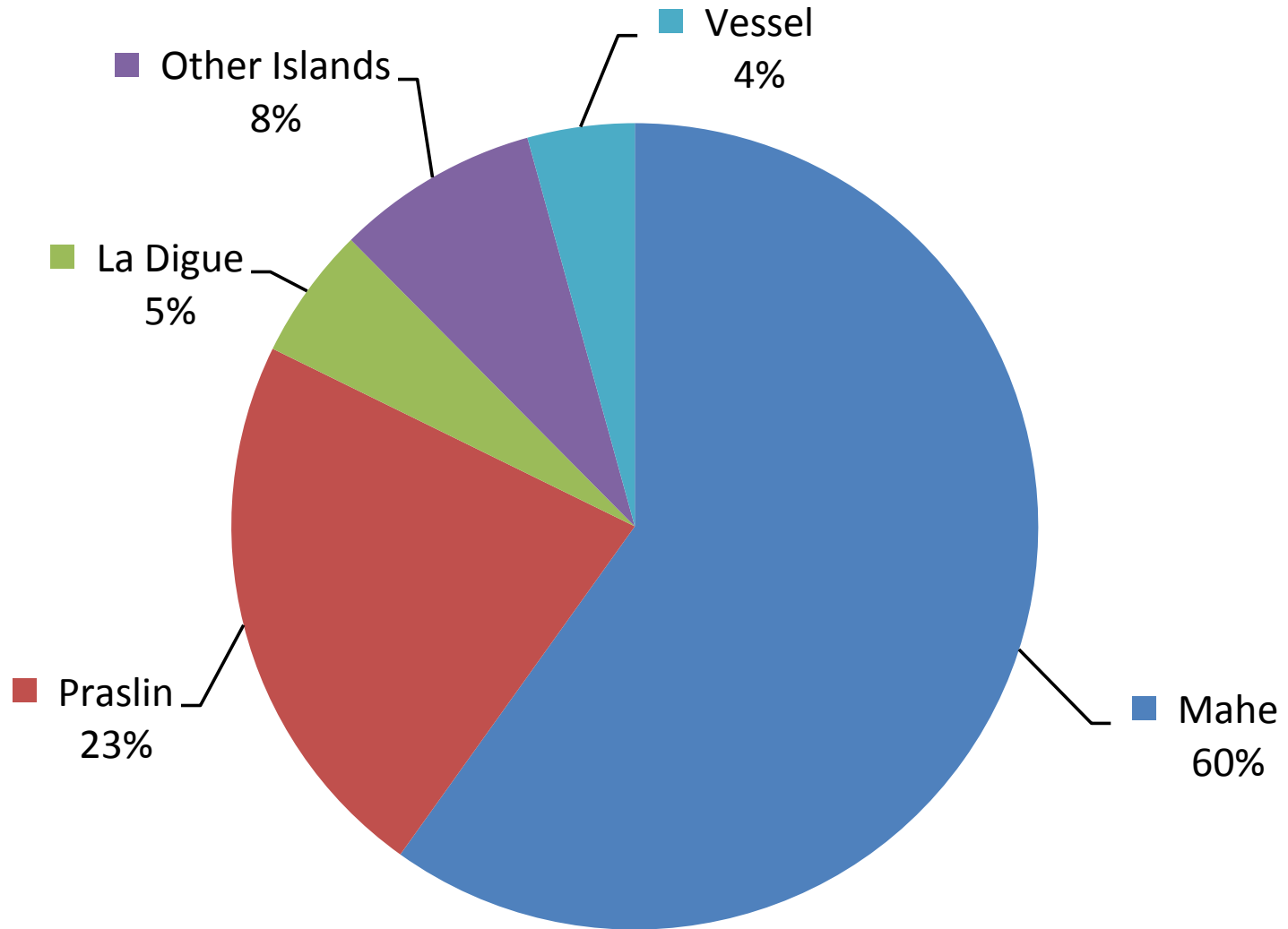
**Chart 3: Visitor Arrivals by Leading Markets (January - December) 2011 - 2013**

Numbers



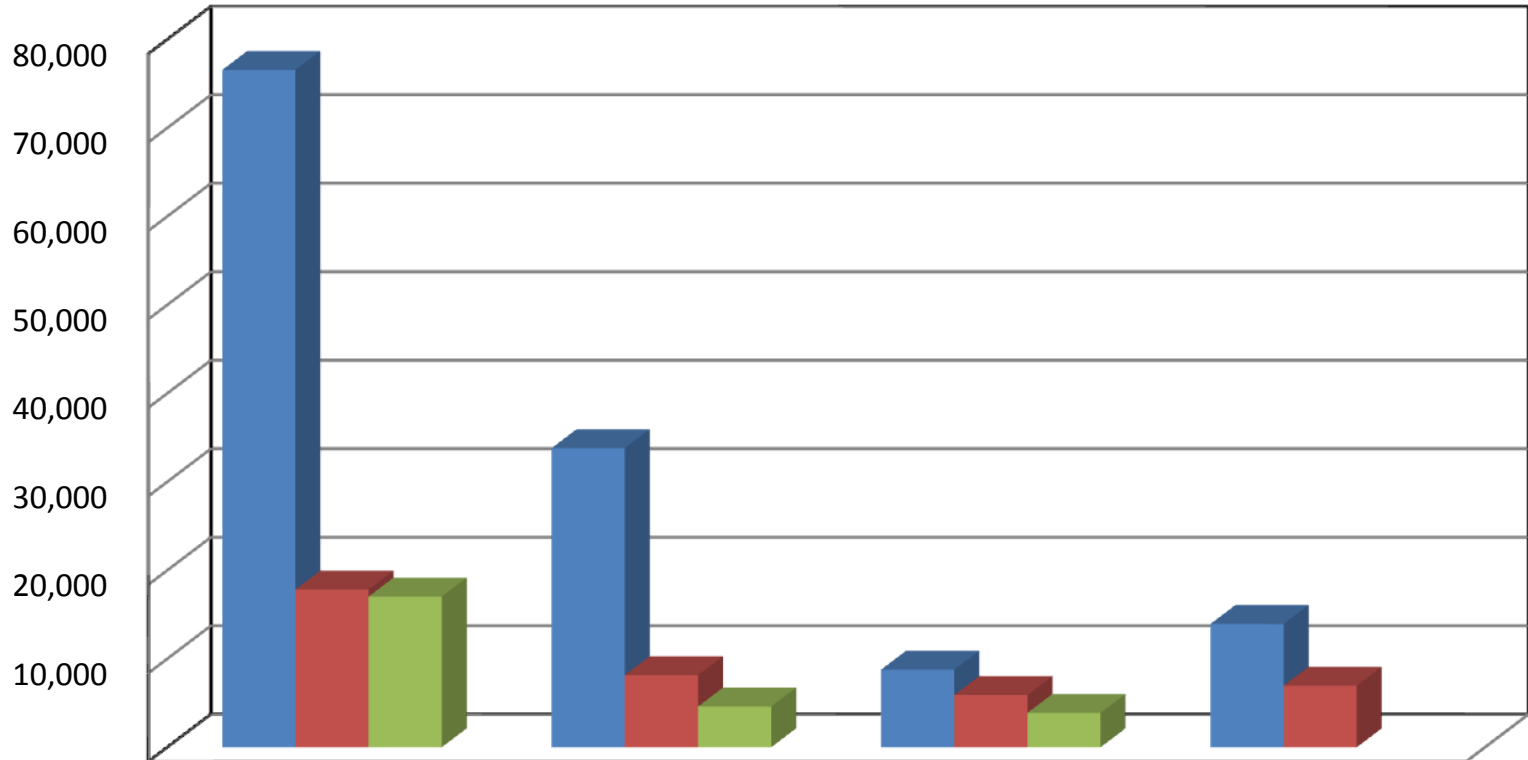
	France	Germany	Italy	Russia	UAE	South Africa	UK & Eire
2013	35,765	33,489	21,767	14,367	13,895	13,294	12,617
2012	32,248	28,163	23,401	13,494	12,880	12,351	11,253
2011	39,370	23,706	25,674	8,840	8,488	10,559	13,335

**Chart 4: Visitors Stay by Location January - December 2013**



**Chart 5: Average Number of Beds Available (Monthly) by Type of Accommodation and Location - 2013**

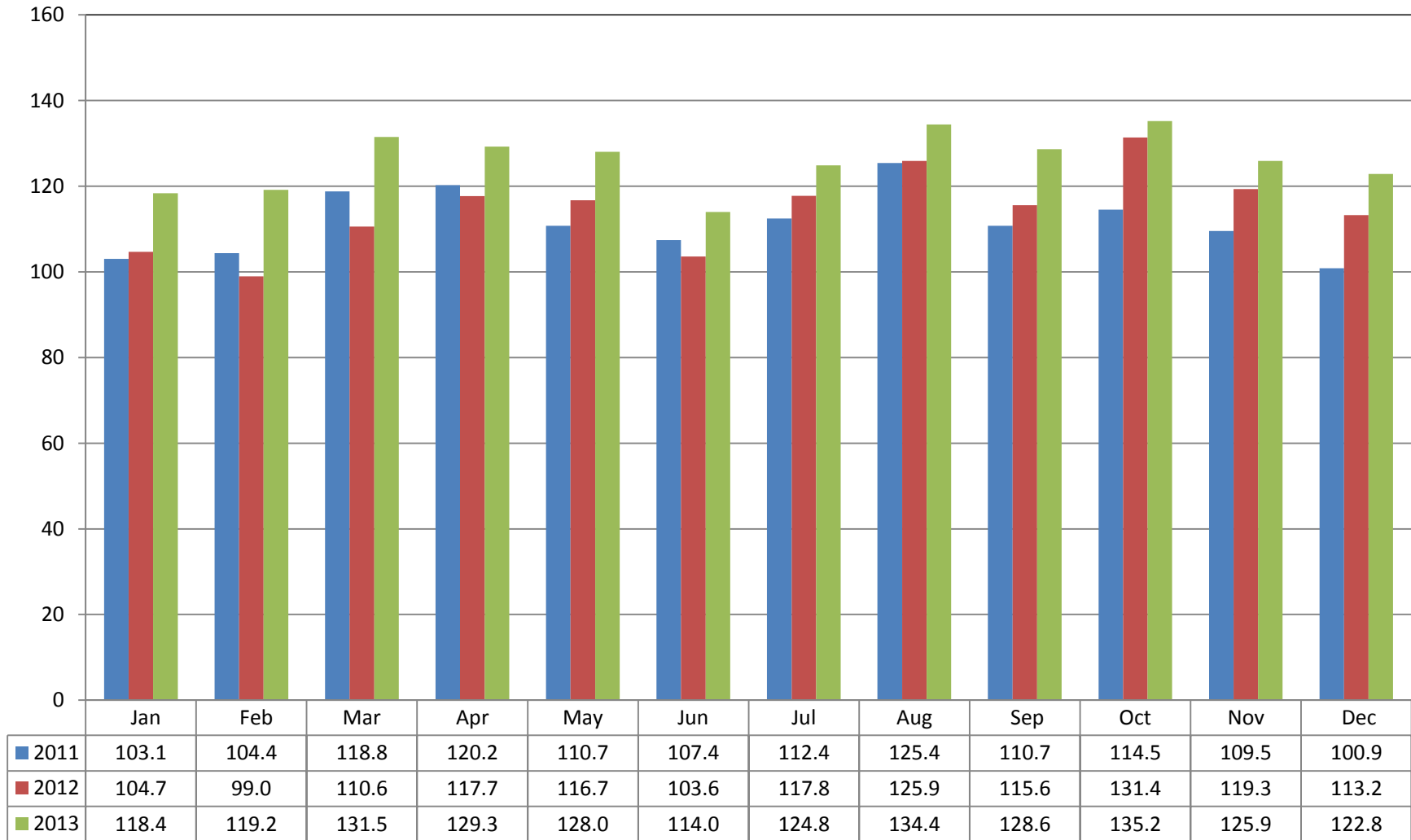
Numbers



	Mahe	Praslin	La Digue	Other Islands
Hotels	76,549	33,809	8,760	13,931
Guest Houses	17,824	8,151	5,893	6,962
Self Catering	17,028	4,598	3,878	

**Chart 6: Bed-Nights Occupied (2011 - 2013)**

Thousand





National Bureau of Statistics  
Caravelle House | Manglier Street | P.O. Box 206 | Victoria | Mahe | Seychelles